



## 12127 Louis White Rd

Geismar, Louisiana 70734

### Property Highlights

- ±175 Acres available for sale
- Ideal for a residential development
- <2.5 mi from I-10
- Medium Intensity Residential District Zoning
- Located within the Dutchtown School District

### Sale Price

\$7,875,000



For more information

**Ty Gose, SIOR, CCIM**

O: 225 295 0800 | C: 225 297 7808  
ty@latterblum.com

**Michael Cashio, CCIM**

O: 225 295 0800 | C: 225 247 9812  
mcashio@latterblum.com

**CALL OR EMAIL FOR MORE INFORMATION**

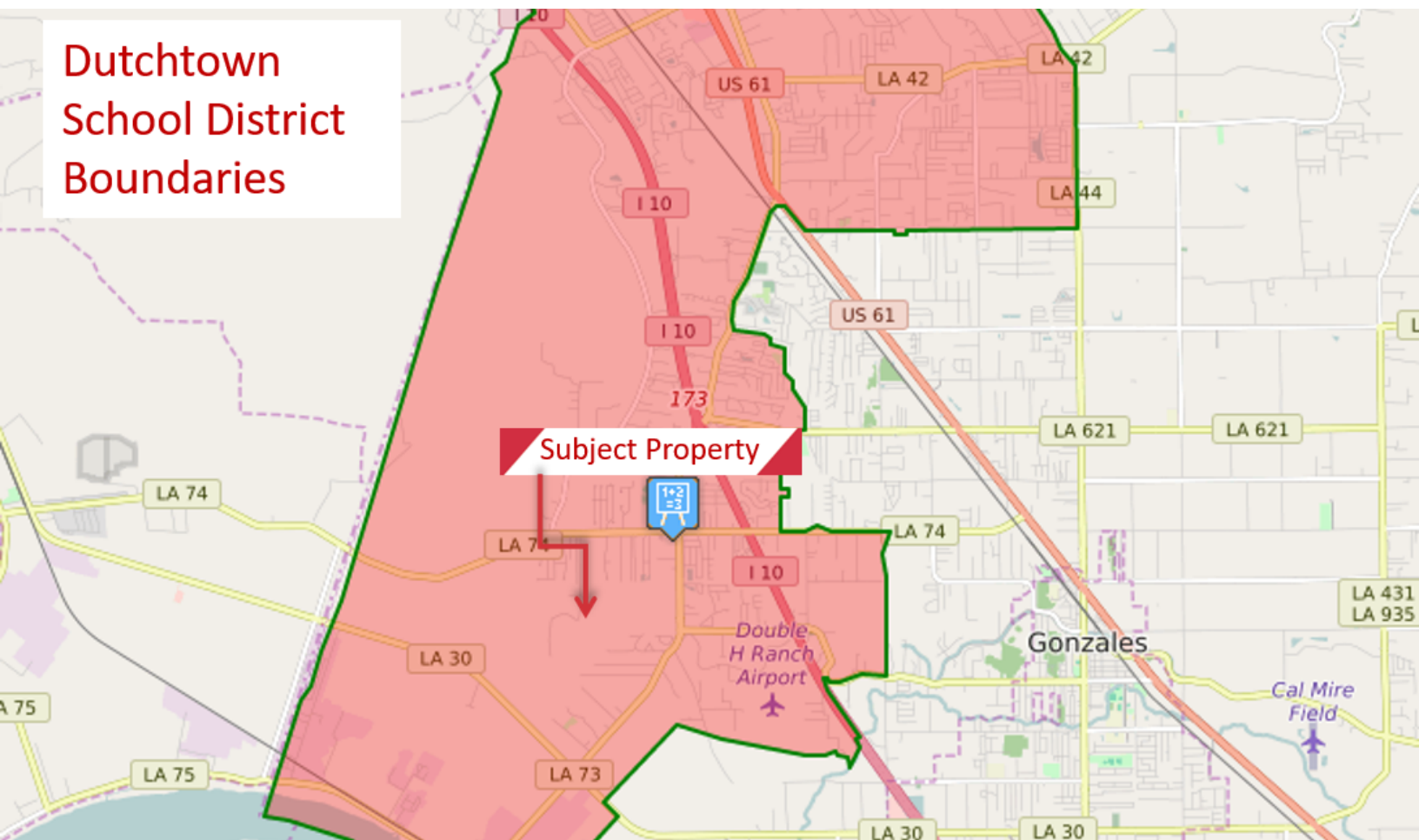
NO WARRANTY OR REPRESENTATION, EXPRESS OR IMPLIED, IS MADE AS TO THE ACCURACY OF THE INFORMATION CONTAINED HEREIN, AND THE SAME IS SUBMITTED SUBJECT TO ERRORS, OMISSIONS, CHANGE OF PRICE, RENTAL OR OTHER CONDITIONS, PRIOR SALE, LEASE OR FINANCING, OR WITHDRAWAL WITHOUT NOTICE, AND OF ANY SPECIAL LISTING CONDITIONS IMPOSED BY OUR PRINCIPALS NO WARRANTIES OR REPRESENTATIONS ARE MADE AS TO THE CONDITION OF THE PROPERTY OR ANY HAZARDS CONTAINED THEREIN ARE ANY TO BE IMPLIED. LICENSED IN LOUISIANA.

1700 City Farm Drive  
Baton Rouge, LA 70806  
225 295 0800 tel  
[latterblum.com](http://latterblum.com)

# Neighborhood And School District Map



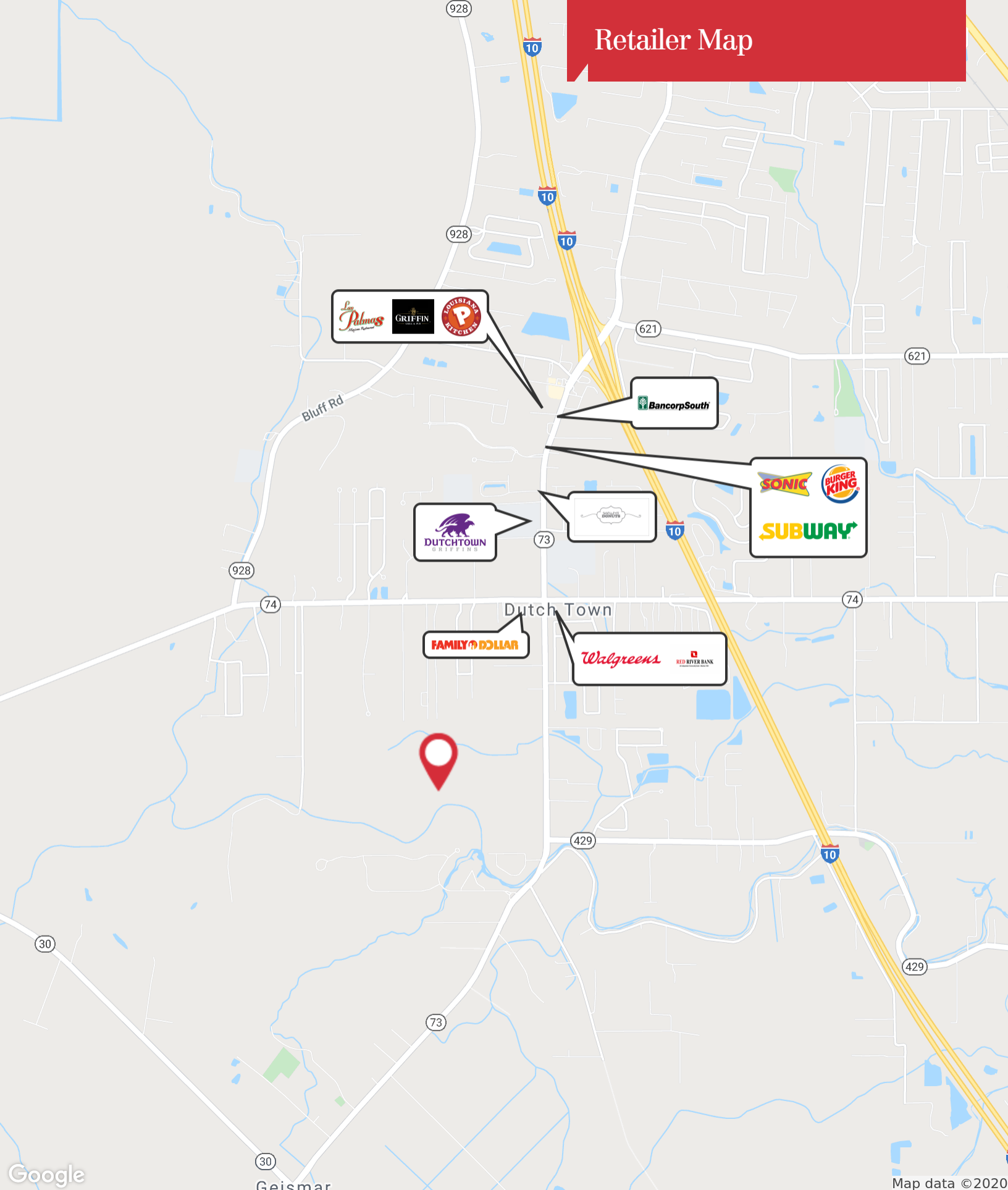
## Dutchtown School District Boundaries



1700 City Farm Drive  
Baton Rouge, LA 70806  
225 295 0800 tel  
[latterblum.com](http://latterblum.com)



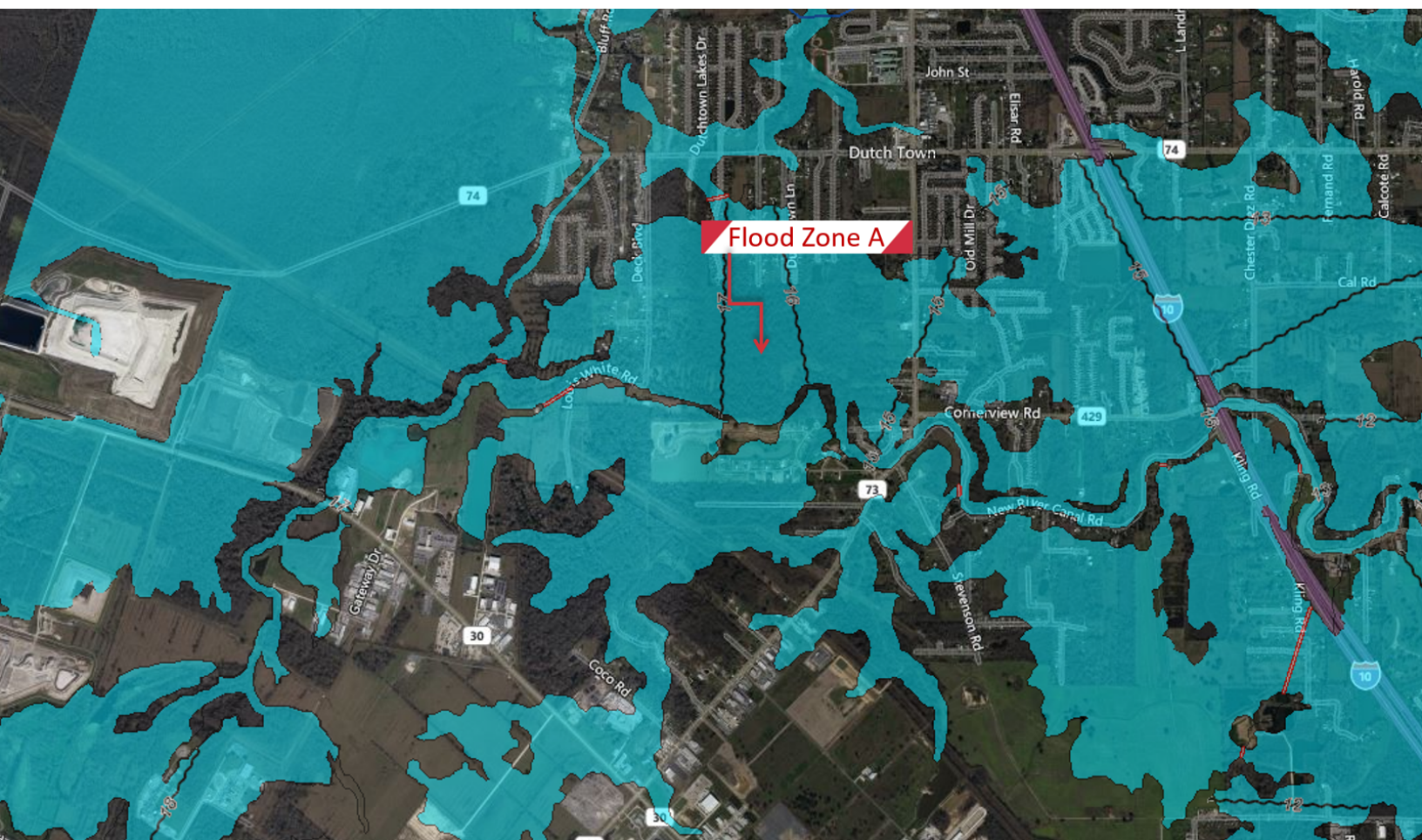
# Retailer Map



1700 City Farm Drive  
Baton Rouge, LA 70806  
225 295 0800 tel  
[latterblum.com](http://latterblum.com)

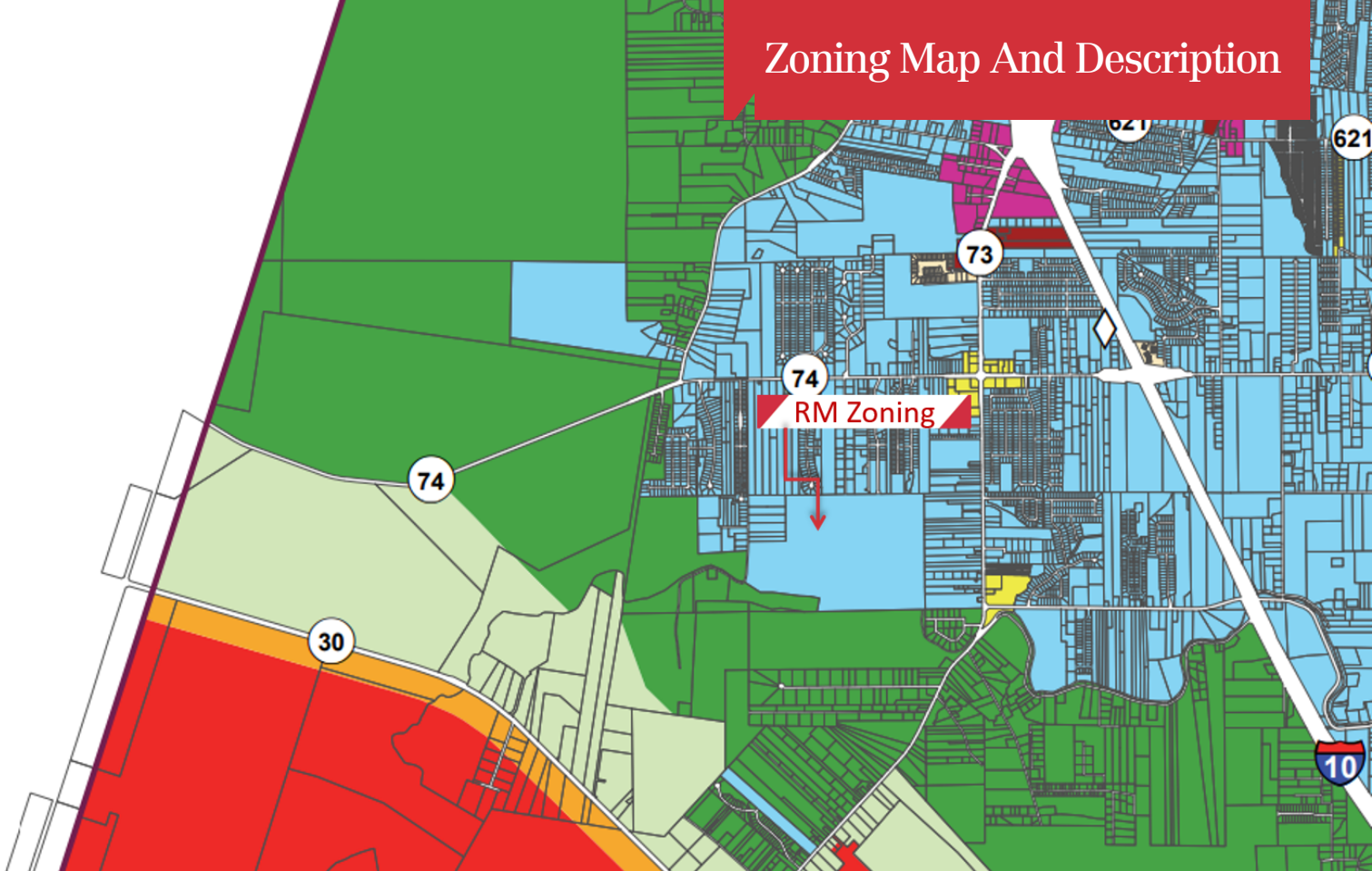


# Aerial And Flood Map



1700 City Farm Drive  
Baton Rouge, LA 70806  
225 295 0800 tel  
[latterblum.com](http://latterblum.com)





17-2015.

## Medium Intensity Residential District (RM)

- A. This district is designated for single family residential development. This district exists largely outside the 100 year flood plain and in the northern part of the parish.
- B. Commentary: This district is designed to be adjacent to high intensity mixed use corridors.

(DC03-01, 1/9/03; DC09-09, 12/17/09; DC15-1, 4/2/15)



## KEY FACTS



75,911  
Population

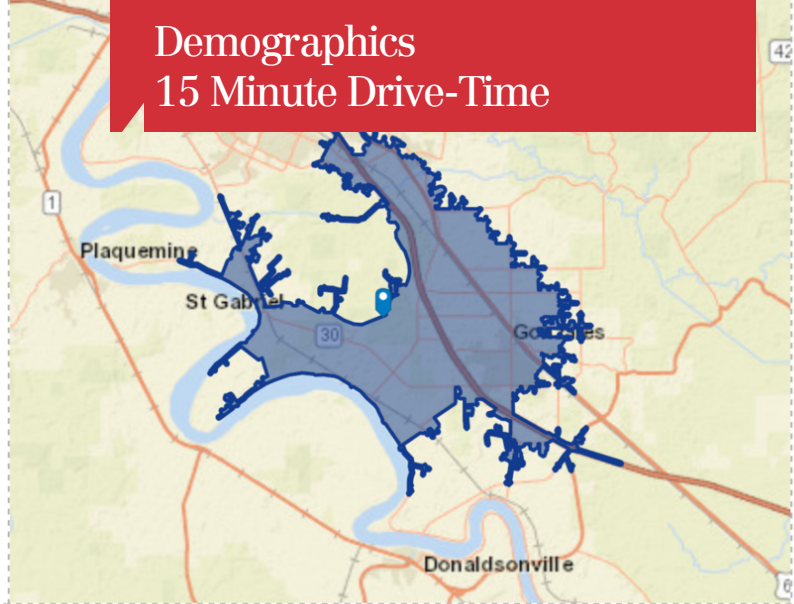


35.7  
Median Age



26,920  
Total Households

## Demographics 15 Minute Drive-Time



## BUSINESS



3,804  
Total Businesses



42,610  
Total Employees

## INCOME



\$153,604  
Median Net Worth



\$111,471  
Average Household  
Income

## EDUCATION



8%  
No High School Diploma



28%  
High School Graduate



31%  
Some College



33%  
Bachelor's/Grad/Prof  
Degree

## EMPLOYMENT



67%  
White Collar



21%  
Blue Collar



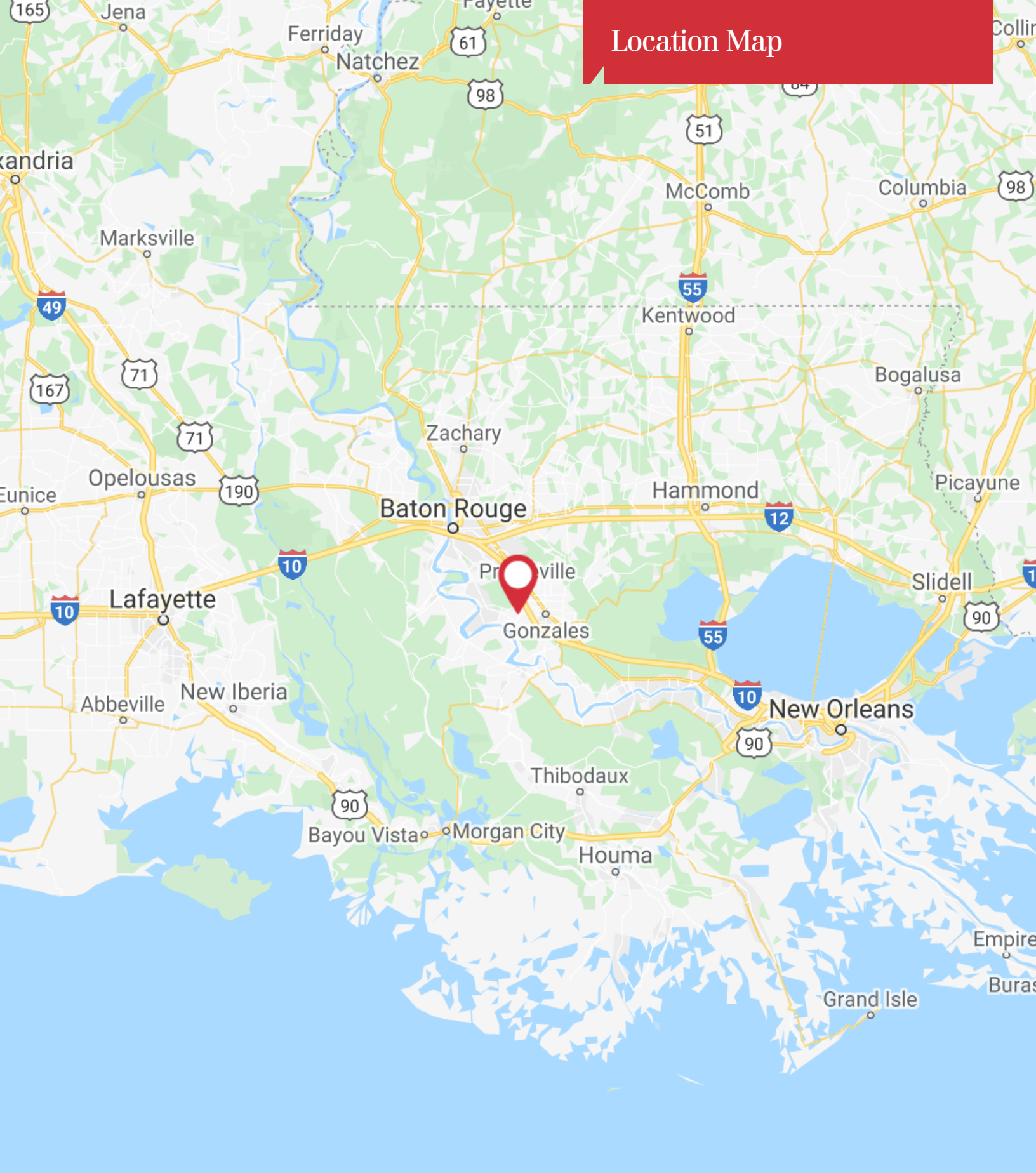
12%  
Services



15.5%  
Unemployment Rate



# Location Map



Google

Map data ©2020 Google, INEGI

**NAI**Latter&Blum

1700 City Farm Drive  
Baton Rouge, LA 70806  
225 295 0800 tel  
[latterblum.com](http://latterblum.com)