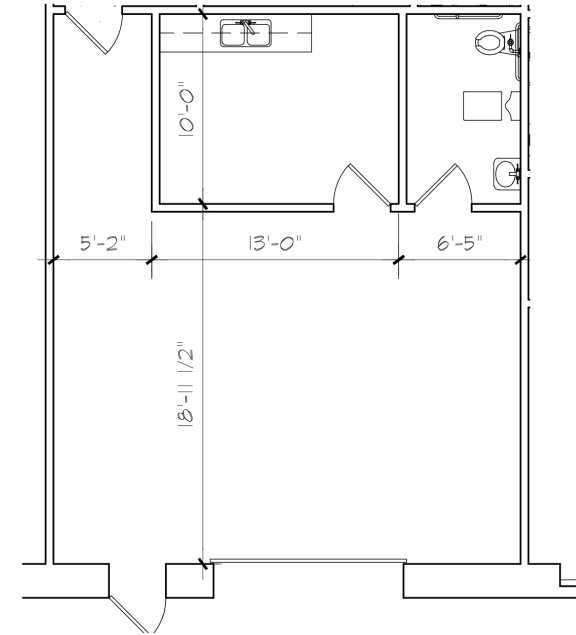
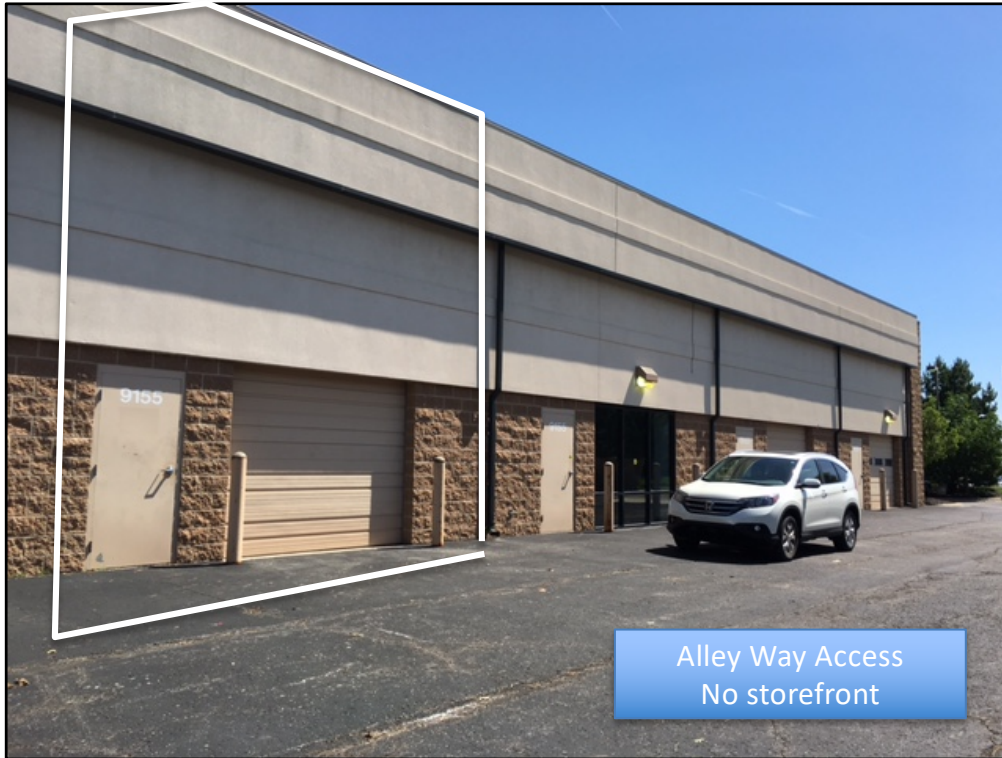


FLEX SPACE | 9157-B West 133rd Street, Overland Park, KS 66213



LEASE RATE: \$900/month

- ❑ 750 SF space in rear portion of flex building in Wyndham Creek Business Park
- ❑ 1 overhead door. Excellent internet-based business or contractors' space.
- ❑ Includes break room, restroom, and open storage-work area
- ❑ One block west of 135th & Antioch with easy metro access via Highway 69
- ❑ Near soccer and baseball fields, restaurant/retail services at Deer Creek Woods, Corbin Park, and Prairiefire
- ❑ Locally owned and managed, well-maintained business park

Jill S. Bergthold

jbergthold@fishmancommercial.com

913.747.3322 O | 913.961.0600 C



FLEX SPACE | 9157-B West 133rd Street, Overland Park, KS 66213



Jill S. Bergthold
jbergthold@fishmancommercial.com
913.747.3322 O | 913.961.0600 C

