

126 EAST ORIS STREET



FOR LEASE | New Class 'A' Distribution Building Under Construction | Compton, CA

FEATURES

94,875 SF

32' clear

Q4 2019 completion date

±4.37 acres (190,310 SF)

Immediately adjacent to designated truck routes on Alameda St and Rosecrans Ave

Last mile delivery location (population of 930,554 within a 5 mile radius)

Secure concrete truck court with motorized gate

1200 amps (expandable to 2000)

ESFR

114 automobile parking spots

12 dock high positions

1 grade level ramp

Potential opportunity zone benefits

**OWNED &
DEVELOPED BY**



REPRESENTED BY

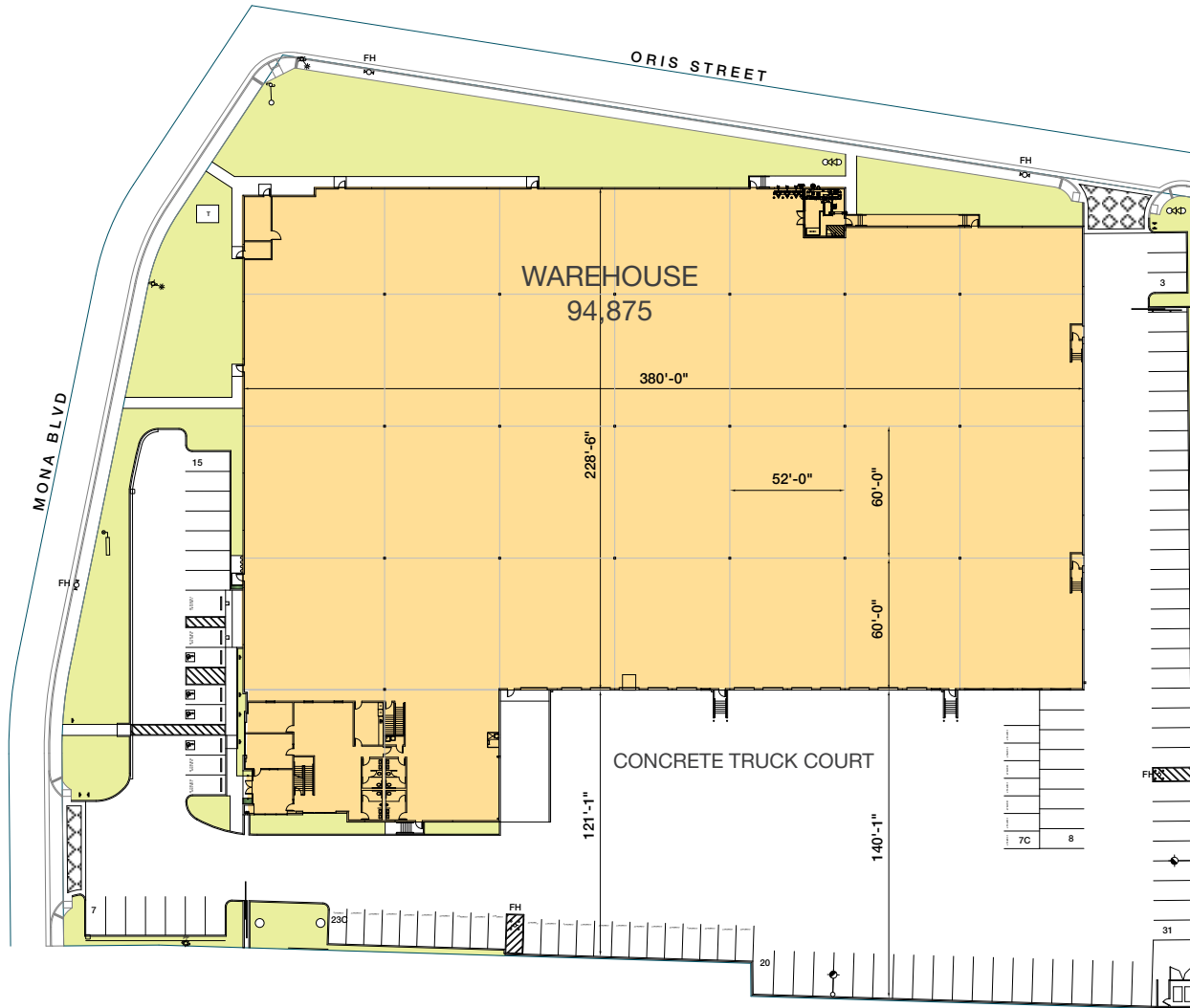
Marc Bonando, SIOR, CCIM
310.906.3290
mbonando@kiddermathews.com
Lic # 01348269

Brad Connors
310.906.3266
bconnors@kiddermathews.com
Lic # 01931267



126 EAST ORIS STREET

Site Plan



OWNED & DEVELOPED BY



REPRESENTED BY

Marc Bonando, SIOR, CCIM
310.906.3290 | mbonando@kiddermathews.com
LIC #01348269

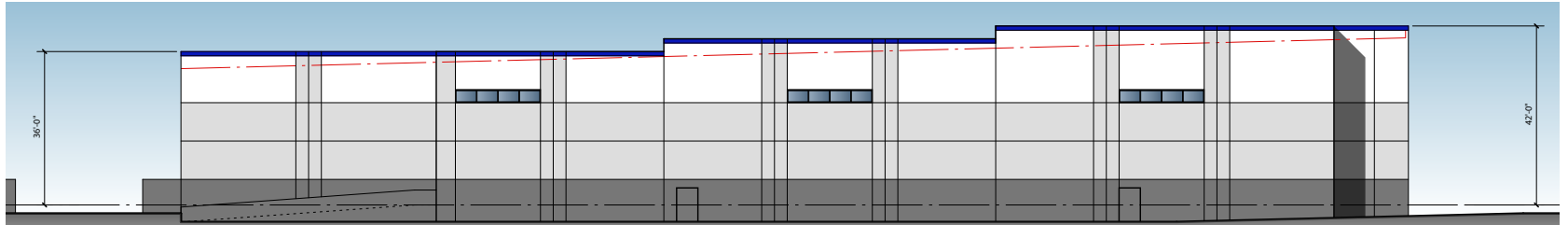
Brad Connors
310.906.3266 | bconnors@kiddermathews.com
LIC #01931267



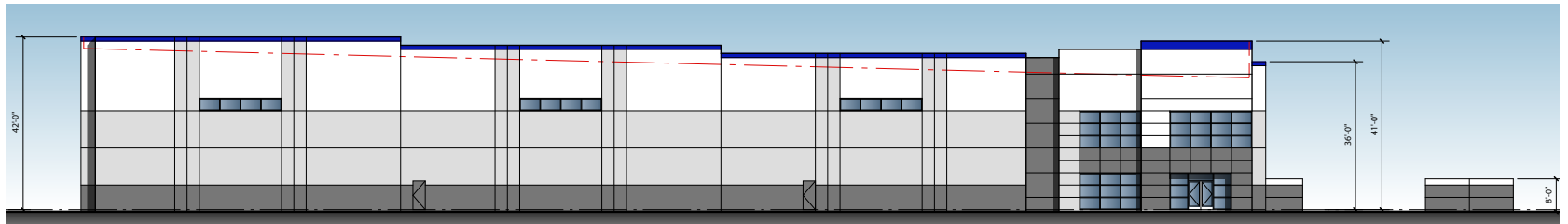
126 EAST ORIS STREET

Elevations

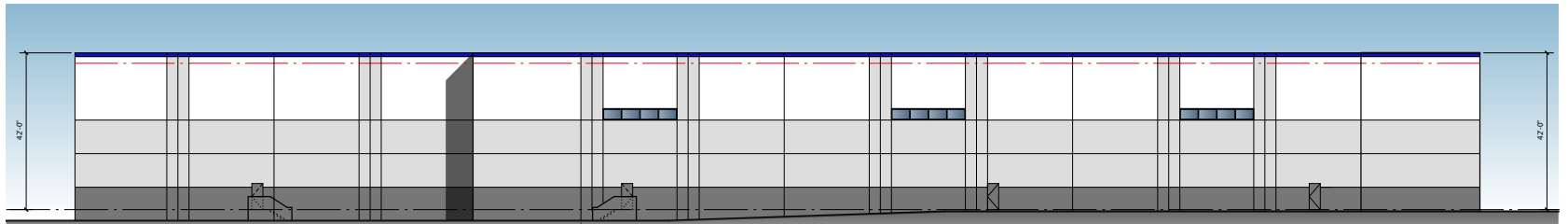
EAST ELEVATION



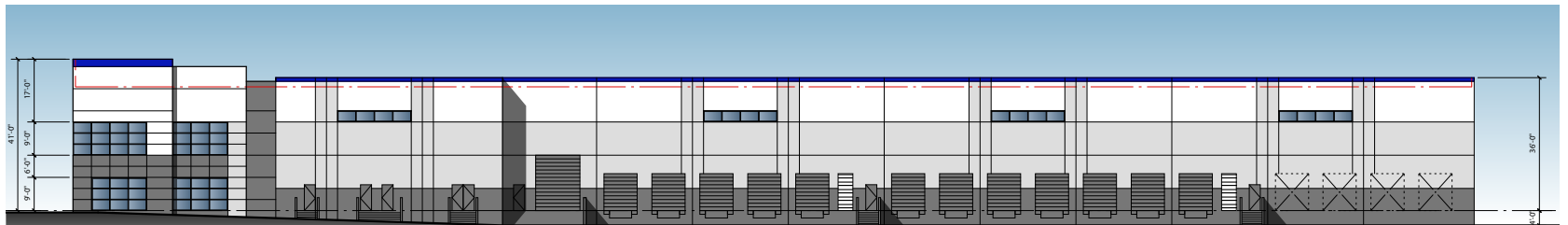
WEST ELEVATION



NORTH ELEVATION



SOUTH ELEVATION



OWNED & DEVELOPED BY



REPRESENTED BY

Marc Bonando, SIOR, CCIM

310.906.3290 | mbonando@kiddermathews.com

LIC #01348269

Brad Connors

310.906.3266 | bconnors@kiddermathews.com

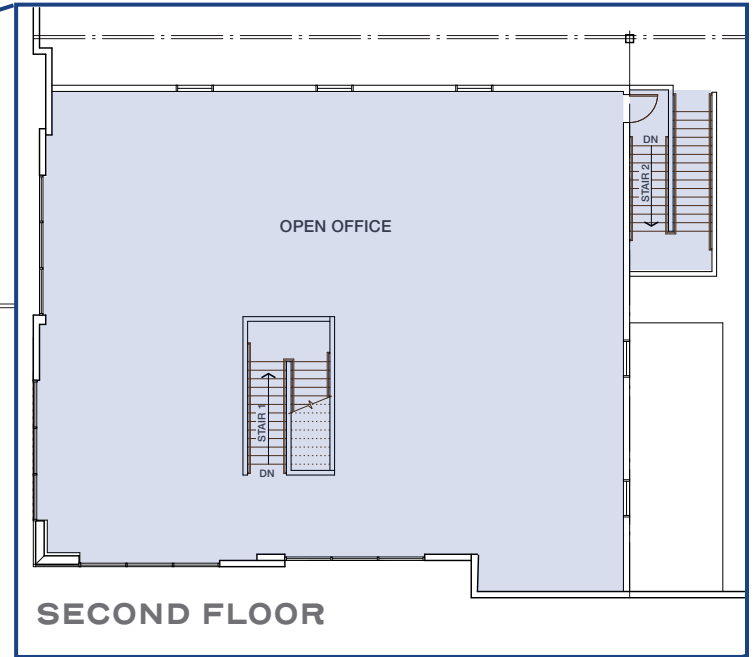
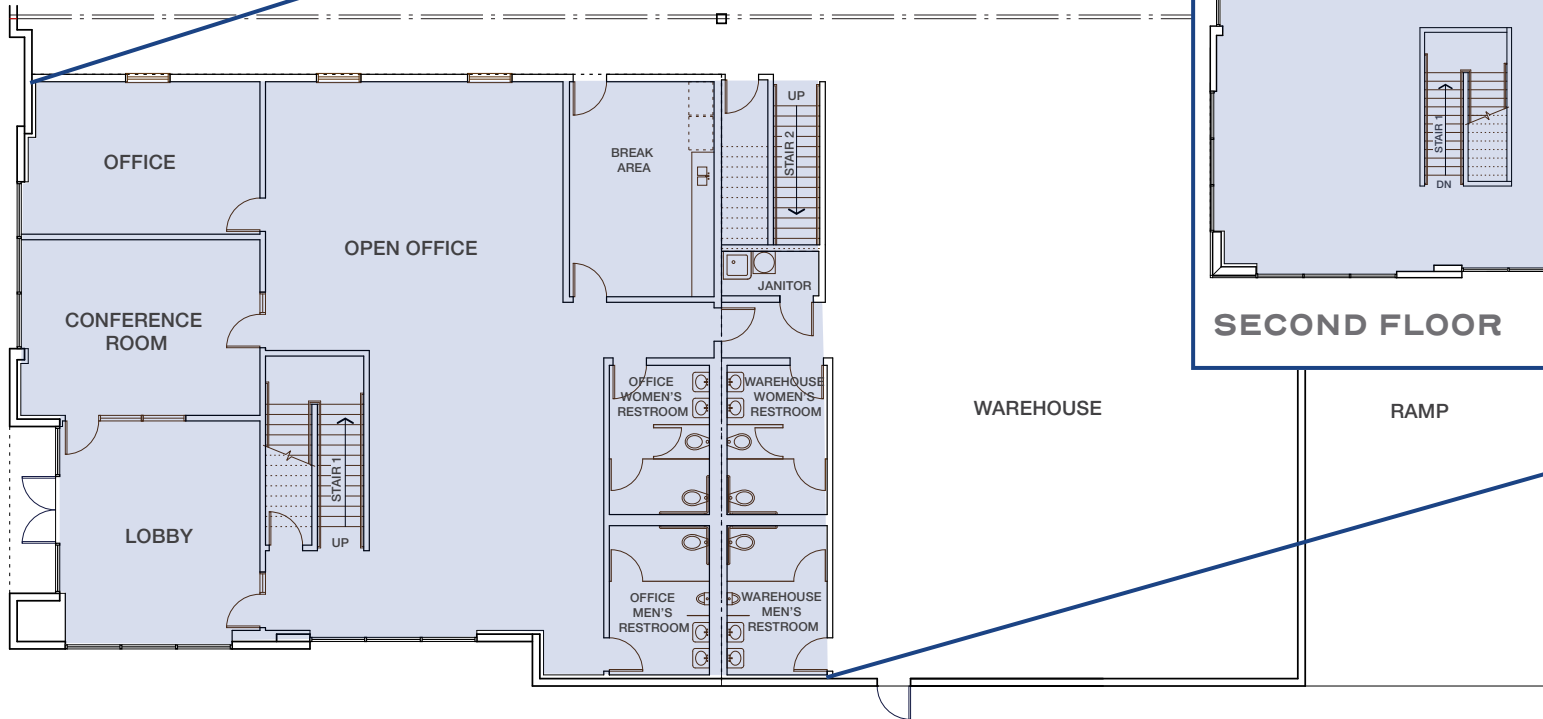
LIC #01931267



126 EAST ORIS STREET

Office Floor Plans

GROUND FLOOR



OWNED & DEVELOPED BY



REPRESENTED BY

Marc Bonando, SIOR, CCIM

310.906.3290 | mbonando@kiddermathews.com

LIC #01348269

Brad Connors

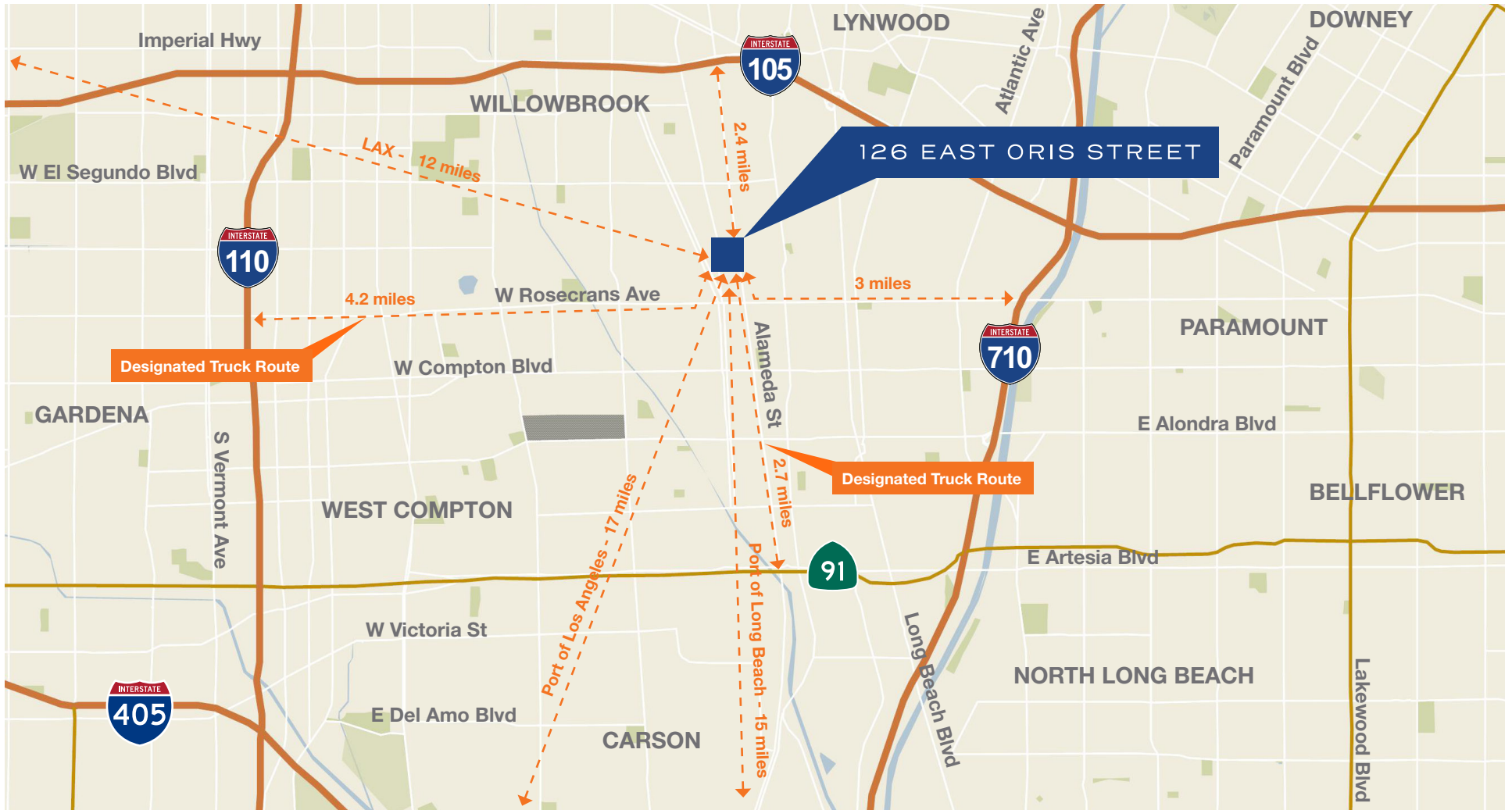
310.906.3266 | bconnors@kiddermathews.com

LIC #01931267



126 EAST ORIS STREET

Location Map



OWNED & DEVELOPED BY



REPRESENTED BY

Marc Bonando, SIOR, CCIM
310.906.3290 | mbonando@kiddermathews.com
LIC #01348269

Brad Connors
310.906.3266 | bconnors@kiddermathews.com
LIC #01931267

