



Crestview Office Suites

2050 Warm Springs Road Columbus, Georgia

Property Overview

Crestview Office Suites is a professionally property-managed, 4,050 SF total office space, divided into 3 offices.

Conveniently located in Midtown Columbus, down the street from the Piedmont Columbus Regional Midtown Medical Campus, with easy access to I-185.

Contact Broker for more Details.

Offering Summary

Lease Rate:	Negotiable
Building Size:	4,050 SF
Available SF:	1,350 SF

For More Information

Amy D. Gill, MICP, MRP

O: 706 660 5418 x1009

agill@g2cre.com | GA #381793

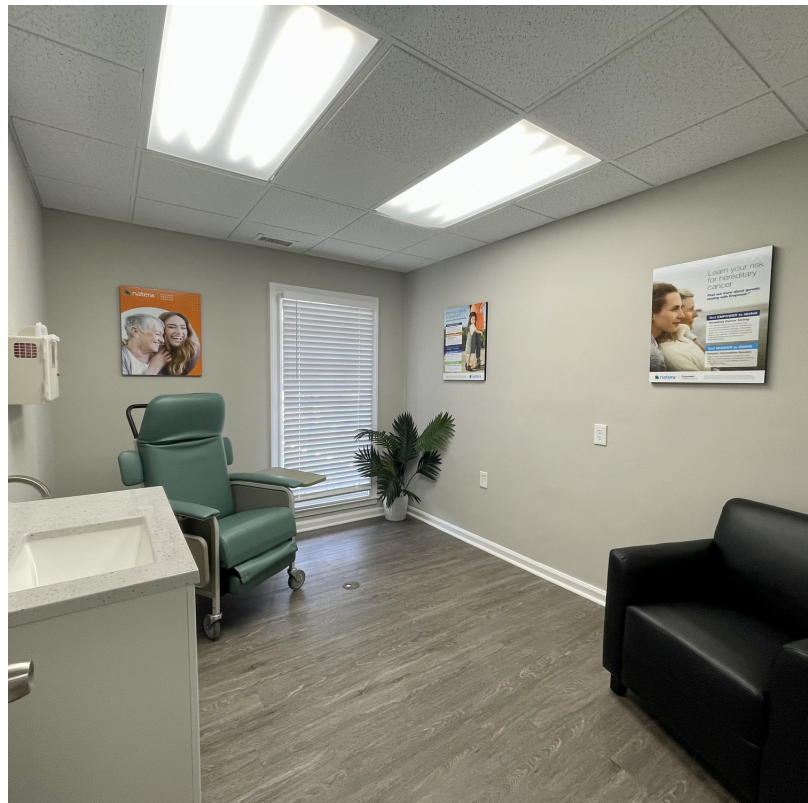
Lease Information

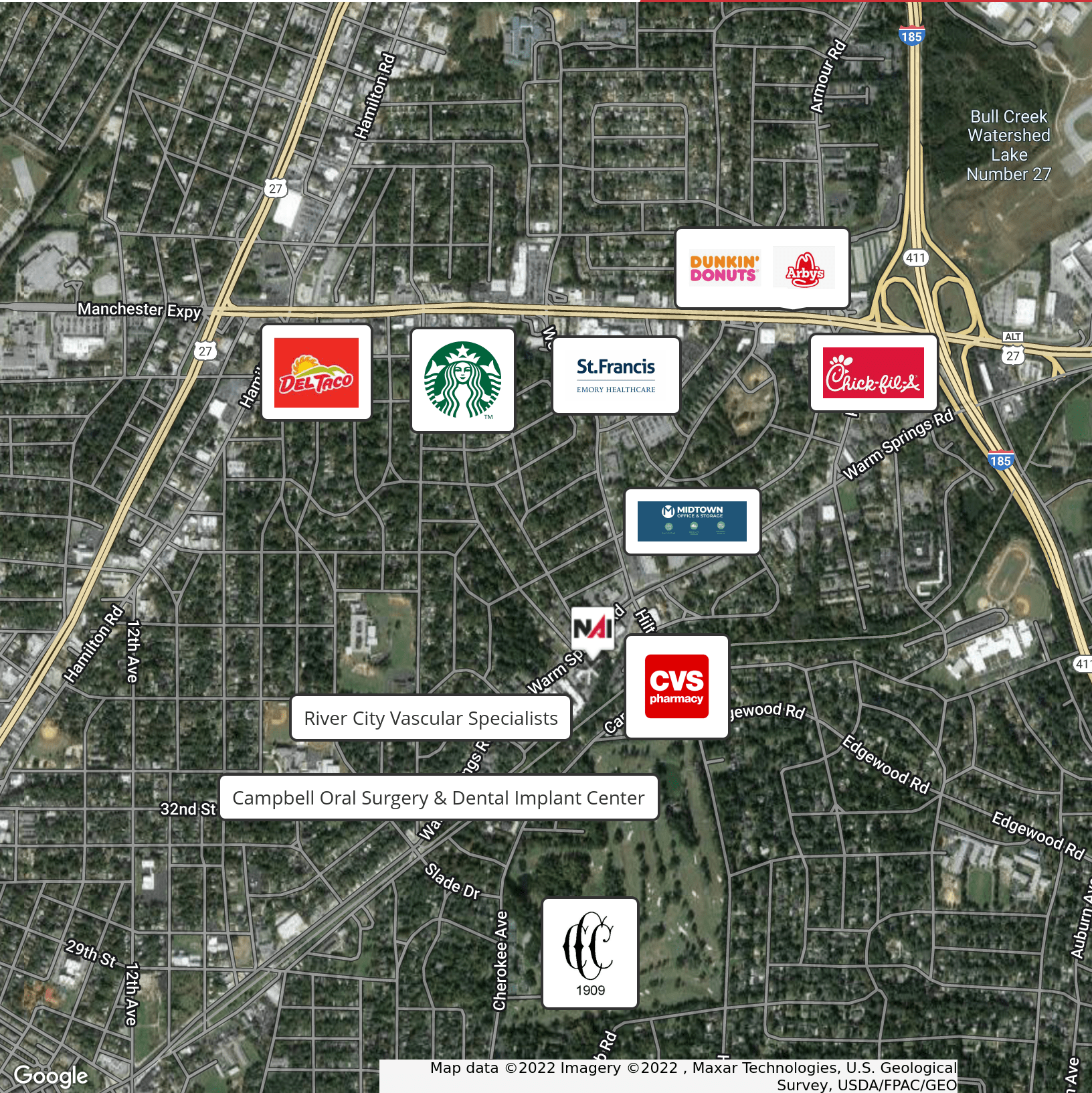
Lease Type:	MG	Lease Term:	36 months
Total Space:	1,350 SF	Lease Rate:	Negotiable

Available Spaces

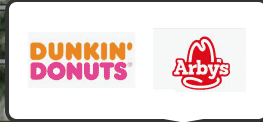
Suite Tenant Size (SF) Lease Type Lease Rate Description

Suite A	Available	1,350 SF	Modified Gross	Negotiable	Medical Office Space available for lease. Newly renovated and move-in ready.
---------	-----------	----------	----------------	------------	--





Bull Creek Watershed
Lake
Number 27

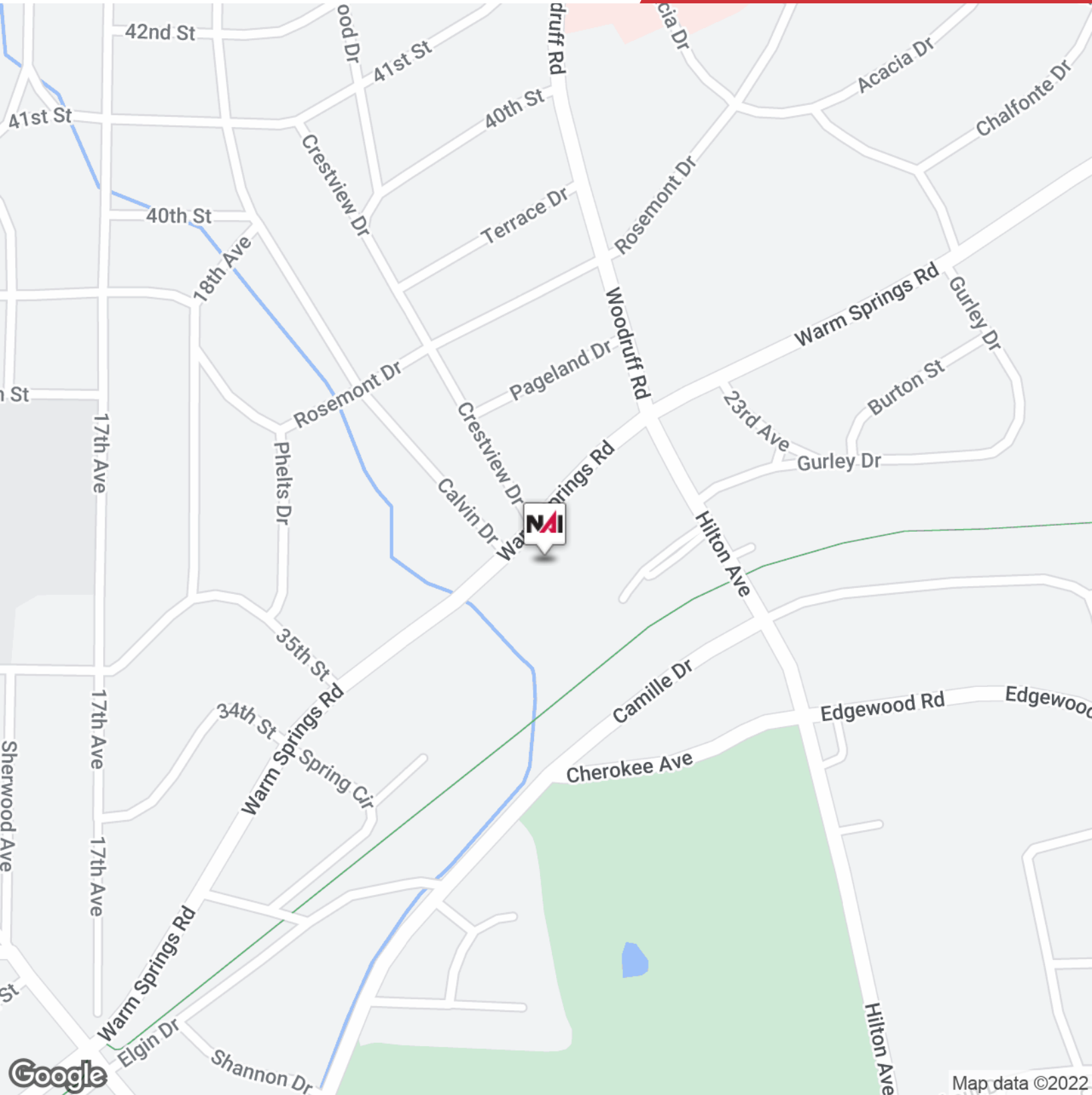


River City Vascular Specialists

Campbell Oral Surgery & Dental Implant Center

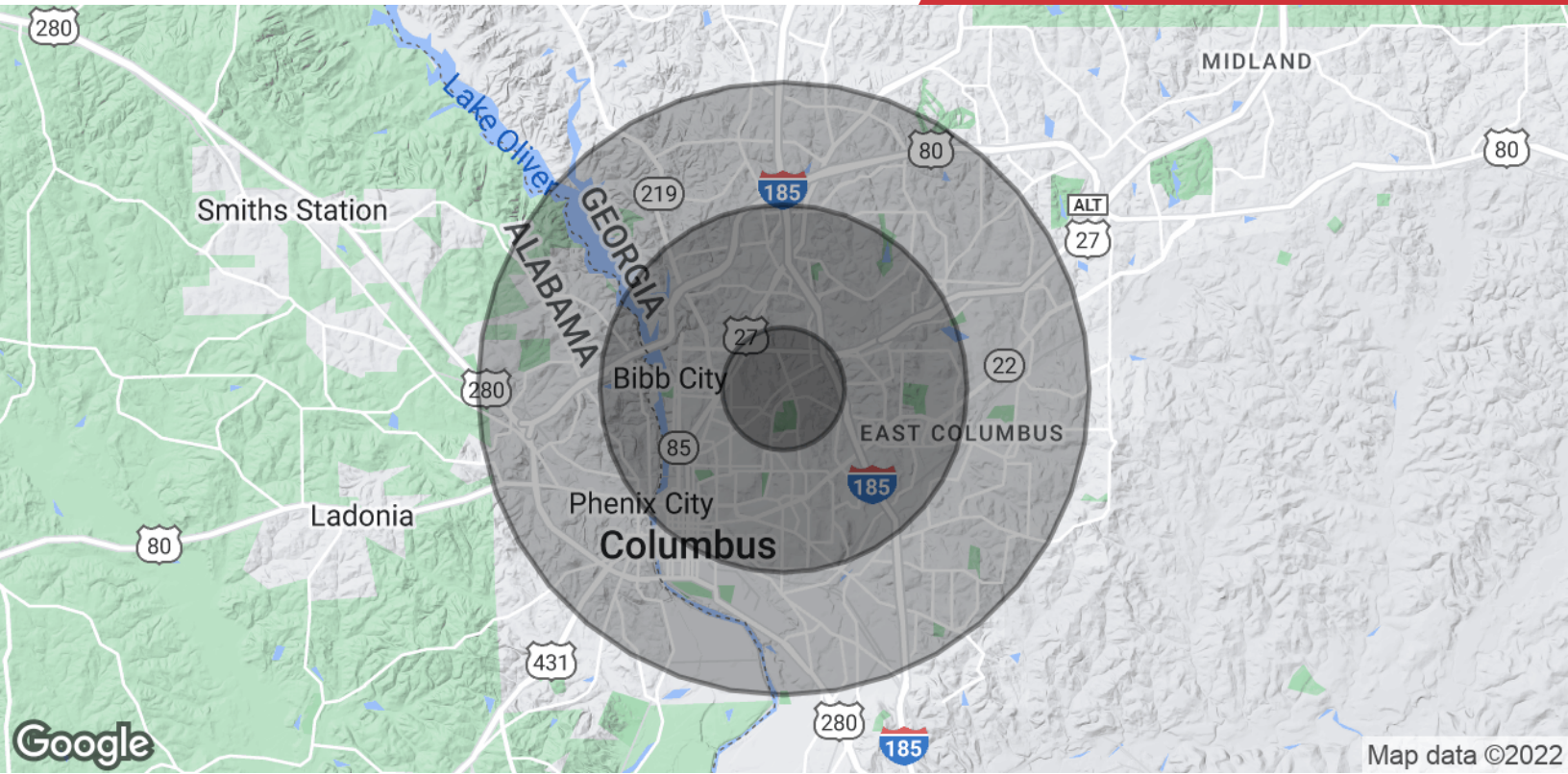


Map data ©2022 Imagery ©2022 , Maxar Technologies, U.S. Geological Survey, USDA/FPAC/GEO



We obtained the information above from sources we believe to be reliable. However, we have not verified its accuracy and make no guarantee, warranty or representation about it. It is submitted subject to the possibility of errors, omissions, change of price, rental or other conditions, prior sale, lease or financing, or withdrawal without notice. We include projections, opinions, assumptions or estimates for example only, and they may not represent current or future performance of the property. You and your tax and legal advisors should conduct your own investigation of the property and transaction.

5607 Whitesville Road
Columbus, GA 31904
706 660 5418 tel
G2cre.com



Population

	1 Mile	3 Miles	5 Miles
Total Population	9,563	68,141	149,333
Average Age	39.1	36.3	35.8
Average Age (Male)	37.4	34.2	34.2
Average Age (Female)	39.6	37.6	37.2

Households & Income

	1 Mile	3 Miles	5 Miles
Total Households	4,355	29,449	62,406
# of Persons per HH	2.2	2.3	2.4
Average HH Income	\$62,724	\$50,026	\$50,202
Average House Value	\$229,452	\$165,549	\$148,063

* Demographic data derived from 2020 ACS - US Census