

3.24 Acres for Sale

Zoned I-2 (Industrial General)

7515 John Marshall Hwy. Marshall, VA 20115

Features:

Located in the Heart of Fauquier County

375 Feet of Frontage on Hwy 55 – Easy Access to I-66

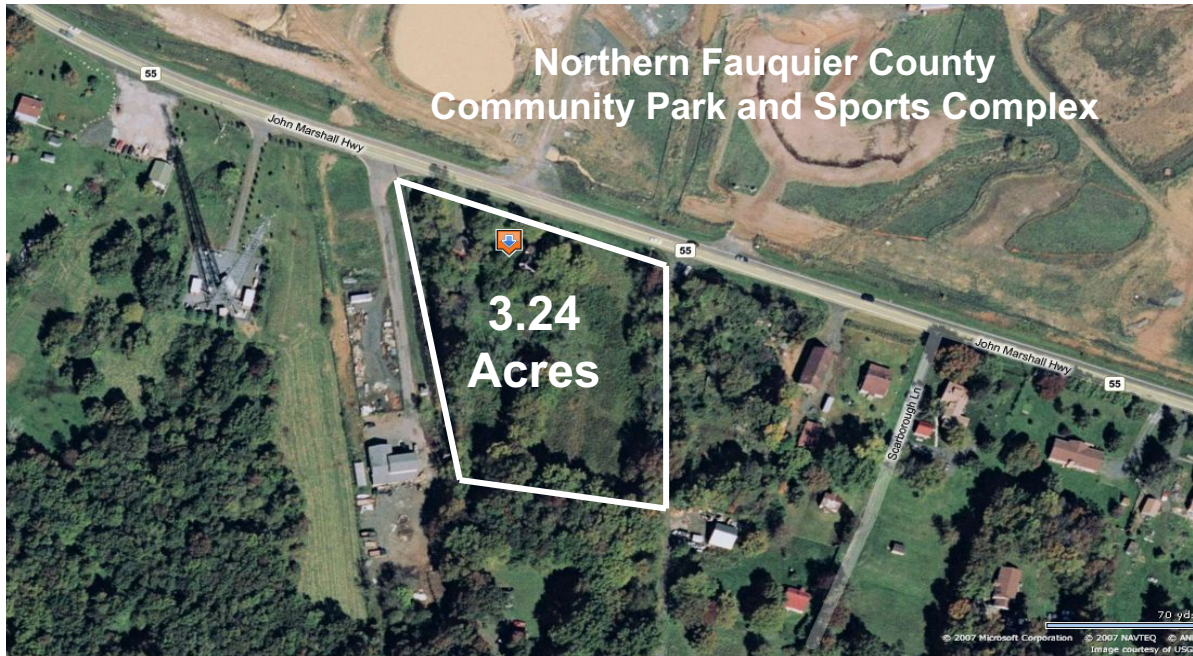
Adjacent to the Northern Fauquier County

Community Park and Sports Complex, Fauquier Livestock Exchange, Inc. & Tri-County Feed



LongStreet Homes

You're Finally Home



Greg Hartley

4304 Beaumont Court

Fairfax, VA 22030

Phone: 571-238-6273

Fax: 703-991-5567

3.24 Acres for Sale

Zoned I-2 (Industrial General)

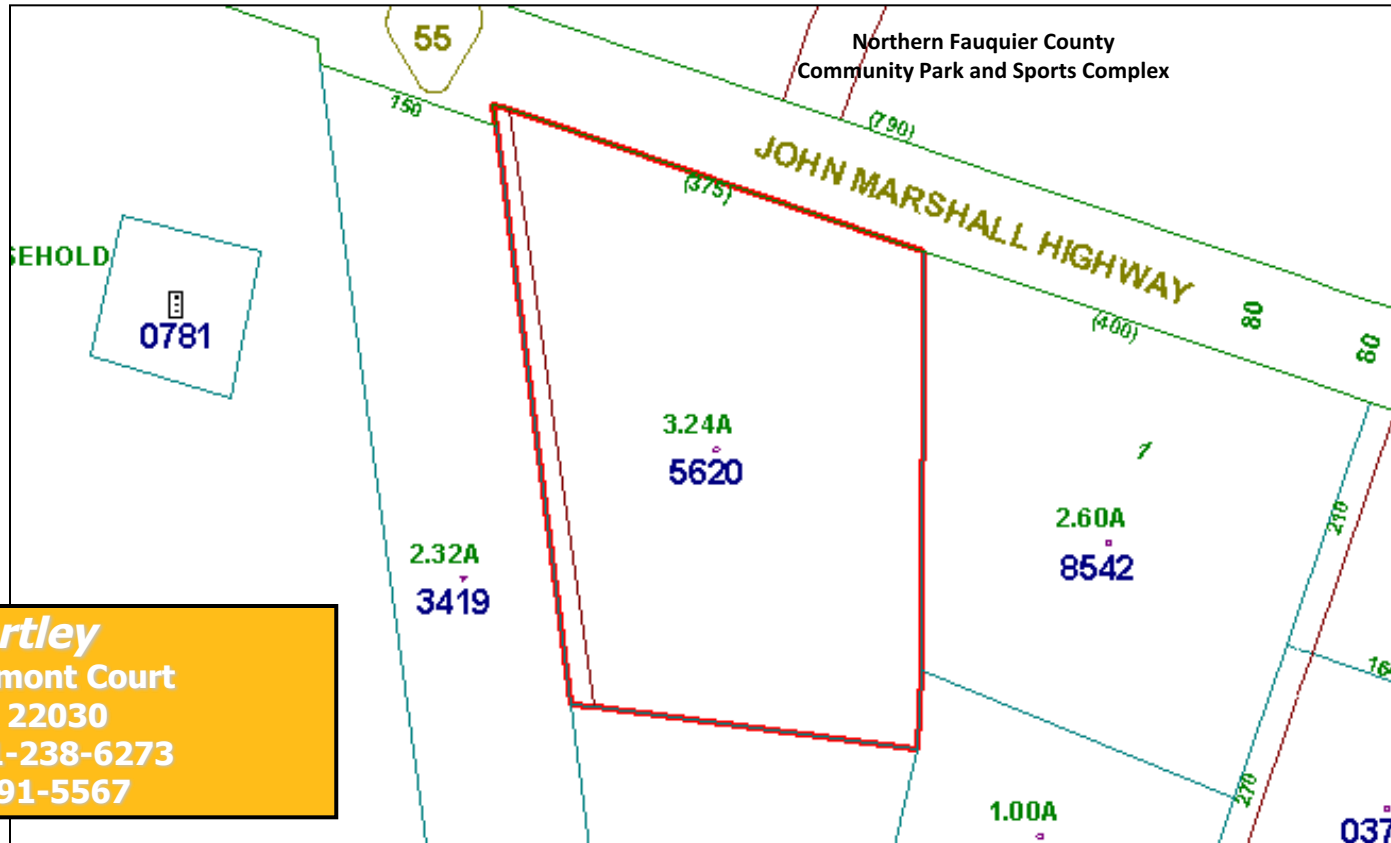
7515 John Marshall Hwy. Marshall, VA 20115



LongStreet Homes

You're Finally Home

- Directions: Take I-66 W to Exit 31 (Old Tavern Road) go North to The Plains. Turn Left on Hwy 55 (John Marshall Hwy) travel 2.5 miles just past the intersection of Hwy 55 and Zulla Rd. Property is on the Left (South side of Hwy 55)



Greg Hartley
4304 Beaumont Court
Fairfax, VA 22030
Phone: 571-238-6273
Fax: 703-991-5567

The information above has been obtained from sources we believe to be reliable. However, we make no guarantees; warranties, expressed or implied; or representations as to the accuracy of the information.
Buyer must verify the information and bears all risk for any inaccuracies.
Change of terms or withdrawals without notice.