

For Lease

2nd Ave N.

2121 2nd Avenue North

Birmingham, AL 35203

AVAILABLE SF

+/- 6,890 – 13,780 SF

RENTAL RATE

\$22.50 Full Service

AVAILABLE DATE

Immediately

PROPERTY HIGHLIGHTS

- Prime Central Business District location with easy access to Red Mountain Expressway, I-65 & I-20/59
- Renovated historic building with high ceilings, exposed brick and lots of natural lighting
- Walking distance to some of Birmingham's hottest bars & restaurant including: El Barrio, Atomic, The Essential, Urban Standard, Bamboo, Colin's Bar, and Pizitz
- Quick access to Rotary Trail
- Proximate parking available



For Lease

2nd Ave N.

2121 2nd Avenue North

Birmingham, AL 35203

AVAILABLE SF

+/- 6,890 – 13,780 SF

RENTAL RATE

\$22.50 Full Service

AVAILABLE DATE

Immediately

CONTACT

EMILY BYRD

(205) 565-6154

emily@corporaterealty1.com

ANITA TURNER

(205) 441-2512

aturner@corporaterealty1.com



For Lease

2nd Ave N.

2121 2nd Avenue North
Birmingham, AL 35203

AVAILABLE SF

+/- 6,890 – 13,780 SF

RENTAL RATE

\$22.50 Full Service

AVAILABLE DATE

Immediately

CONTACT

EMILY BYRD

(205) 565-6154

emily@corporaterealty1.com

ANITA TURNER

(205) 441-2512

aturner@corporaterealty1.com



For Lease

2nd Ave N.

2121 2nd Avenue North
Birmingham, AL 35203

AVAILABLE SF

+/- 6,890 – 13,780 SF

RENTAL RATE

\$22.50 Full Service

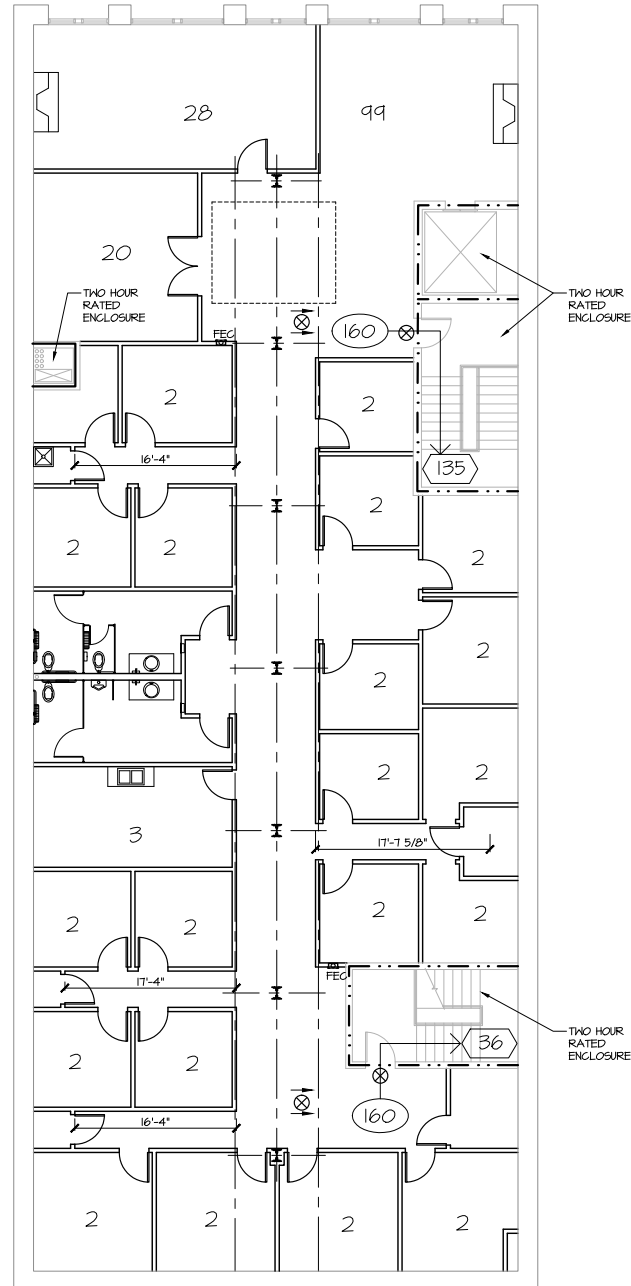
AVAILABLE DATE

Immediately

CONTACT

EMILY BYRD
(205) 565-6154
emily@corporaterealty1.com

ANITA TURNER
(205) 441-2512
aturner@corporaterealty1.com



For Lease

2nd Ave N.

2121 2nd Avenue North
Birmingham, AL 35203

AVAILABLE SF

+/- 6,890 – 13,780 SF

RENTAL RATE

\$22.50 Full Service

AVAILABLE DATE

Immediately

CONTACT

EMILY BYRD
(205) 565-6154
emily@corporaterealty1.com

ANITA TURNER
(205) 441-2512
aturner@corporaterealty1.com

Parking

