



FOR LEASE

11 SHATTUCK STREET

WORCESTER, MA 01605



Voted Best Commercial Real Estate Brokerage - Worcester Business Journal

DREW HIGGINS

Vice President

higgins@kelleher-sadowsky.com

O: 508.635.6784

C: 508.735.1783

WILLIAM D. KELLEHER, IV

Principal

wkelleher@kelleher-sadowsky.com

O: 508.635.6785

C: 508.596.5395

EXECUTIVE SUMMARY



OFFERING SUMMARY

Property Type: Office

Building Size: 18,000 SF

Available SF: 18,000 SF

Lease Rate: Market Rate

PROPERTY OVERVIEW

Kelleher & Sadowsky is pleased to introduce a sub-lease opportunity for Ascentria Care Alliance at 11 Shattuck Street in Worcester. The space available is in a standalone building on three floors and is 100% occupied by Ascentria Care Alliance. There is currently 5+- years available on this sub-lease opportunity. This administrative office building is in close proximity to UMass Memorial Hahnemann Hospital and within minutes from I-290 and downtown Worcester. There is surface parking available directly outside the front door.

DREW HIGGINS

Vice President

higgins@kelleher-sadowsky.com

O: 508.635.6784

C: 508.735.1783

WILLIAM D. KELLEHER, IV

Principal

wkelleher@kelleher-sadowsky.com

O: 508.635.6785

C: 508.596.5395

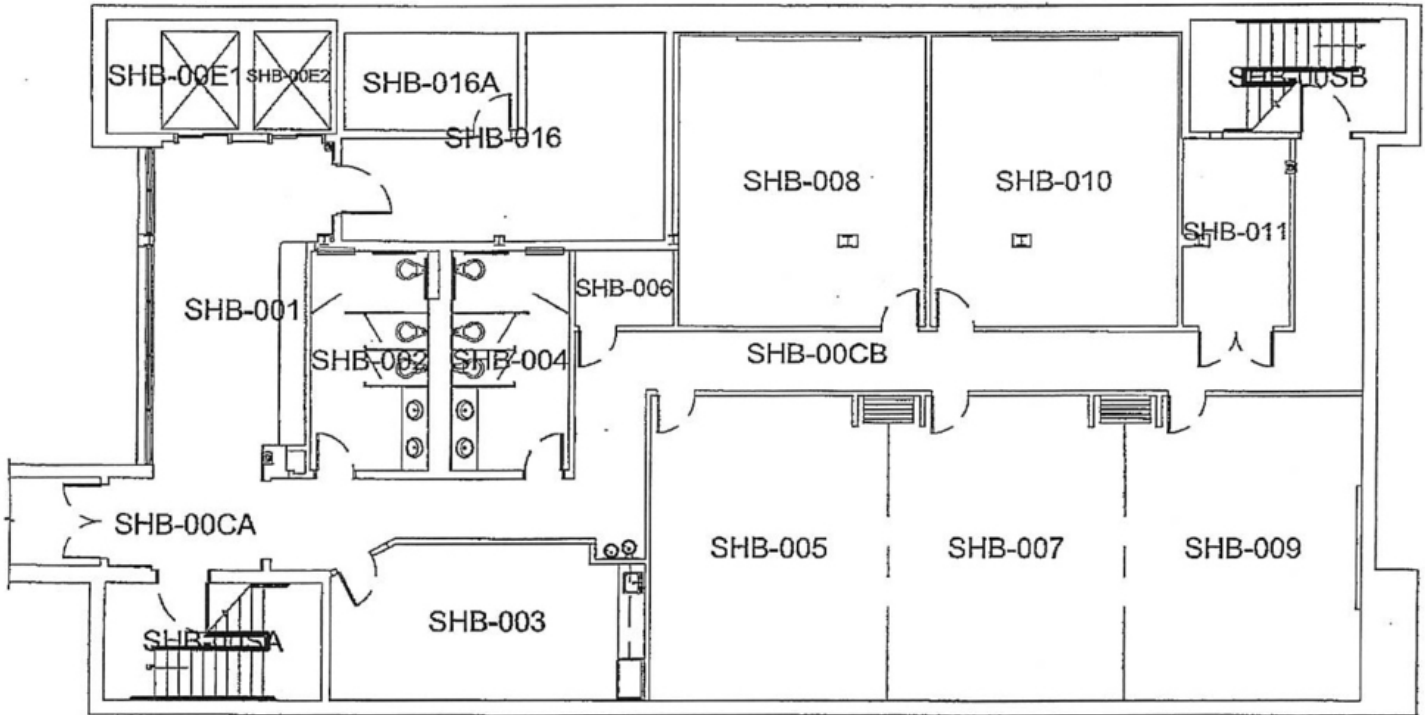


**Kelleher
& Sadowsky**

Rated Best Commercial Real Estate Brokerage - Worcester Business Journal

120 Front Street, Suite 210 | Worcester, MA 01608 | 508.755.0707 | kelleher-sadowsky.com

LOWER LEVEL FLOOR PLANS



DREW HIGGINS **WILLIAM D. KELLEHER, IV**

Vice President

higgins@kelleher-sadowsky.com

O: 508.635.6784

C: 508.735.1783

Principal

wkelleher@kelleher-sadowsky.com

O: 508.635.6785

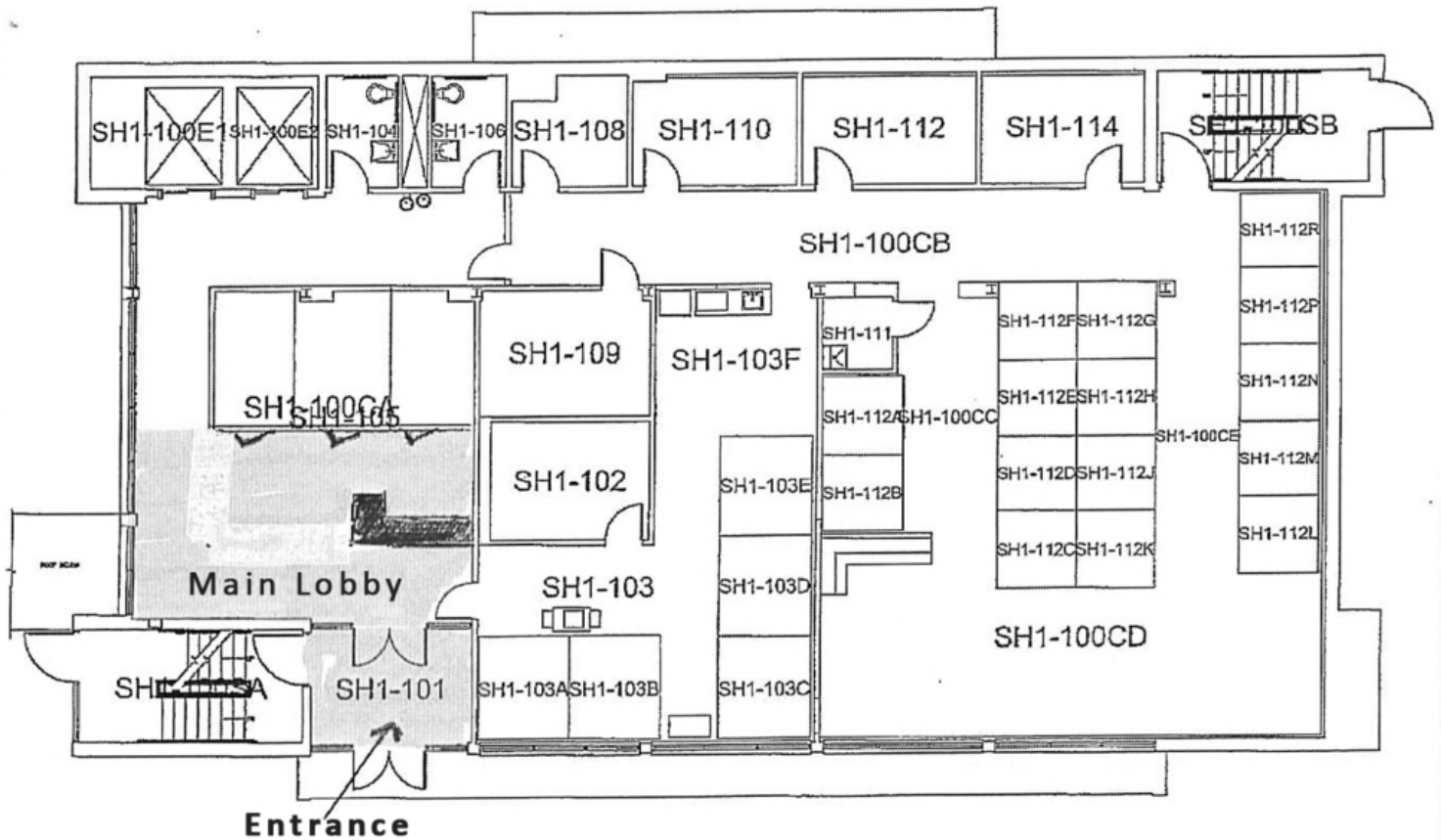
C: 508.596.5395



Voted Best Commercial Real Estate Brokerage - Worcester Business Journal

120 Front Street, Suite 210 | Worcester, MA 01608 | 508.755.0707 | kelleher-sadowsky.com

FIRST FLOOR PLANS



DREW HIGGINS **WILLIAM D. KELLEHER, IV**

Vice President

higgins@kelleher-sadowsky.com

O: 508.635.6784

C: 508.735.1783

Principal

wkelleher@kelleher-sadowsky.com

O: 508.635.6785

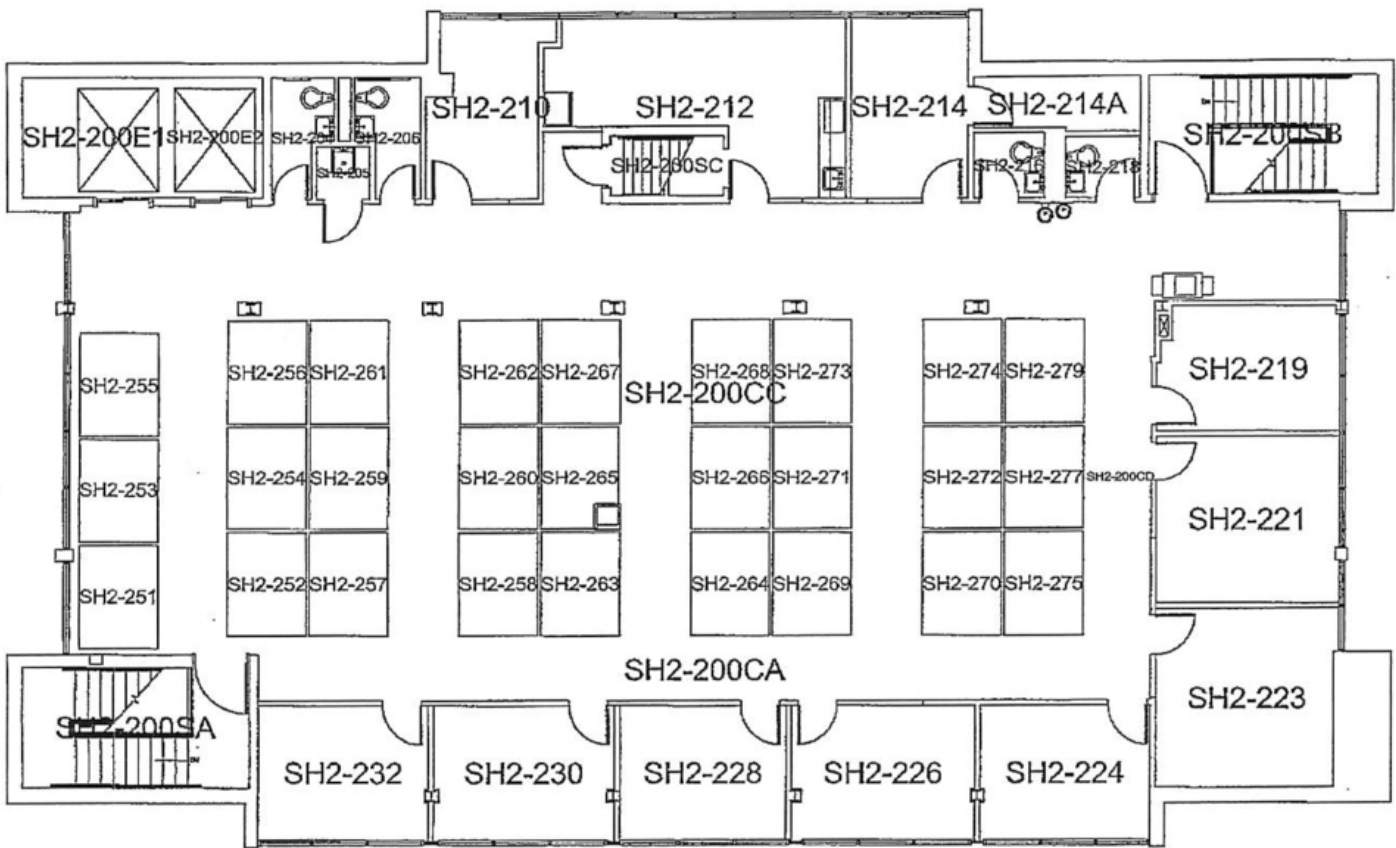
C: 508.596.5395



Voted Best Commercial Real Estate Brokerage - Worcester Business Journal

120 Front Street, Suite 210 | Worcester, MA 01608 | 508.755.0707 | kelleher-sadowsky.com

SECOND FLOOR PLANS



DREW HIGGINS **WILLIAM D. KELLEHER, IV**

Vice President

higgins@kelleher-sadowsky.com

O: 508.635.6784

C: 508.735.1783

Principal

wkelleher@kelleher-sadowsky.com

O: 508.635.6785

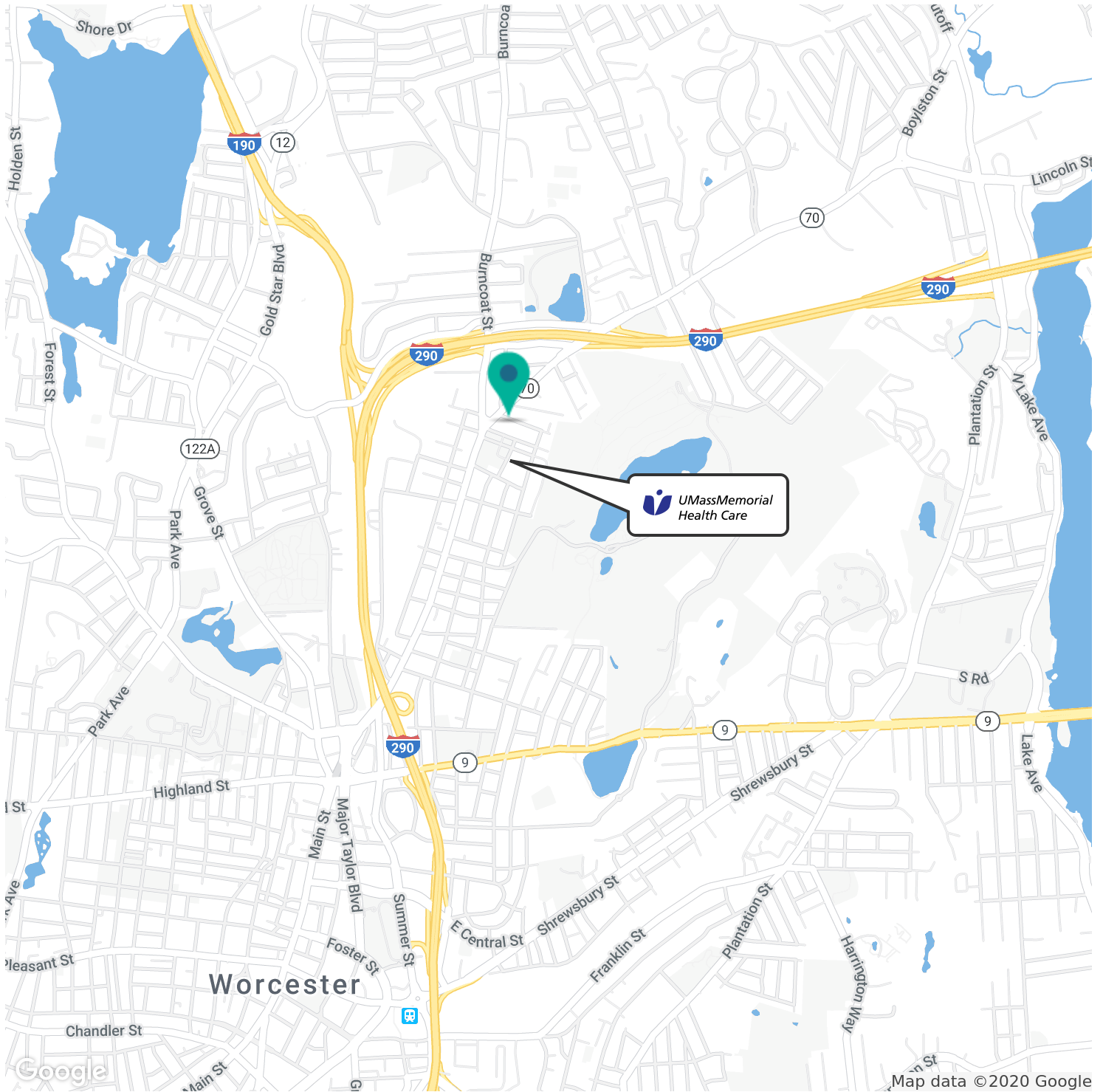
C: 508.596.5395



Voted Best Commercial Real Estate Brokerage - Worcester Business Journal

120 Front Street, Suite 210 | Worcester, MA 01608 | 508.755.0707 | kelleher-sadowsky.com

RETAILER MAP



DREW HIGGINS **WILLIAM D. KELLEHER, IV**

Vice President

higgins@kelleher-sadowsky.com

O: 508.635.6784

C: 508.735.1783

Principal

wkelleher@kelleher-sadowsky.com

O: 508.635.6785

C: 508.596.5395



Voted Best Commercial Real Estate Brokerage - Worcester Business Journal

120 Front Street, Suite 210 | Worcester, MA 01608 | 508.755.0707 | kelleher-sadowsky.com