

FOR LEASE

PARKER SQUARE

700 PARKER SQUARE | FLOWER MOUND, TX 75028



- Located in the heart of Flower Mound
- Situated on FM 1171 with easy access to Interstate 35E and FM 2499
- Gross lease rates
- Mixed-use redevelopment of offices, retail, restaurants and education
- Available for immediate occupancy

| | |
|-----------------------|------------------|
| Property Type | Office |
| Year Built | 2001 |
| Total Available Space | ± 875 SF |
| Max. Contiguous | ± 875 SF |
| Min. Divisible | ± 875 SF |
| Lease Rate | Call for pricing |
| Lease Type | Plus electric |



ALEX PAYNE
alex@axisrealty.biz
972.979.7727

BRAD ANDRUS
brad@axisrealty.biz
940.368.3588

CHASE TRAUGHBER
chase@axisrealty.biz
972.515.0045

212 South Elm Street | Denton, Texas 76201 | 940.891.2947 | axisrealty.biz

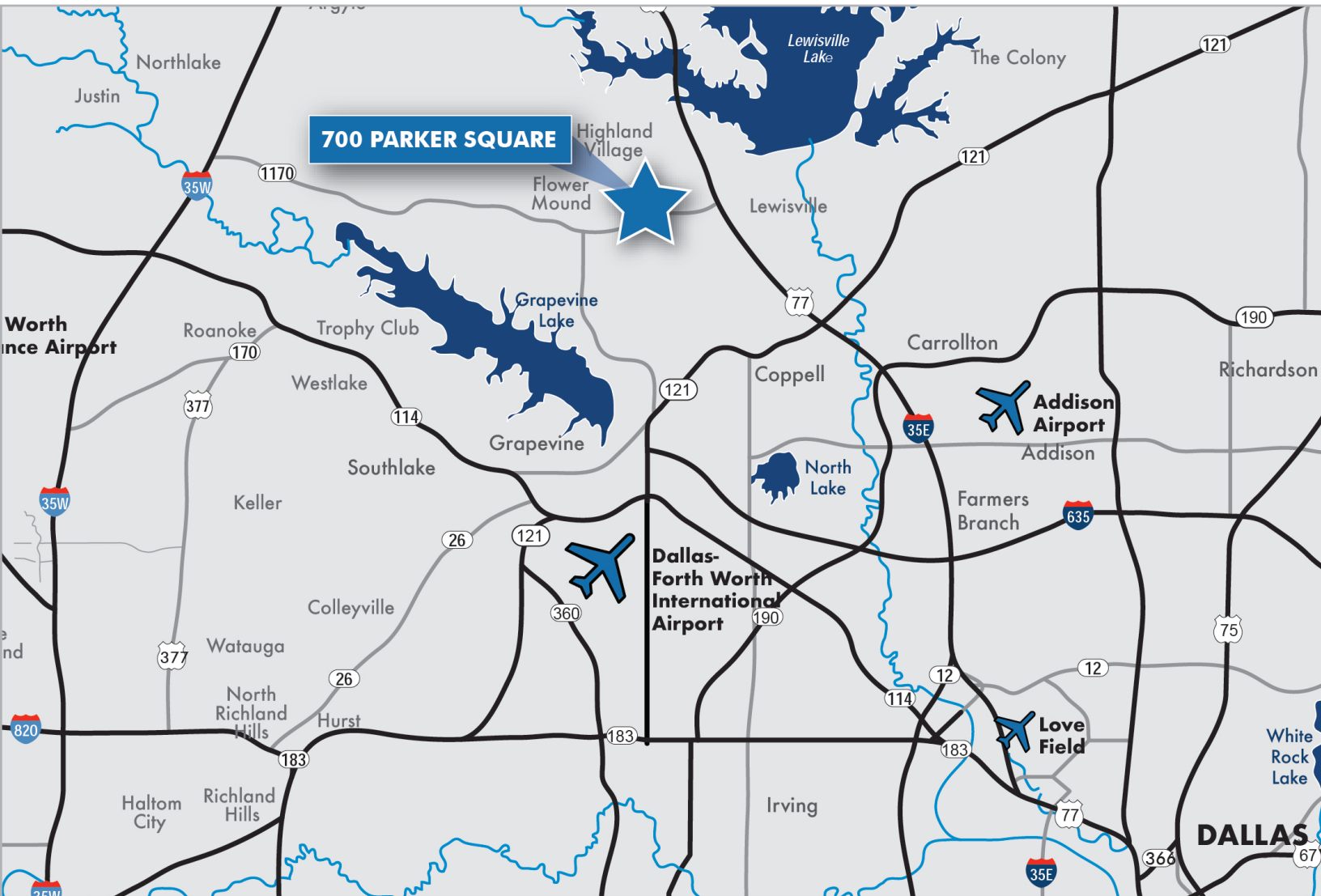
The information contained herein was obtained from sources deemed reliable and is submitted subject to errors, omissions, change of price, rental or other conditions, prior lease, or withdrawal from market without notice.

Copyright© 2020 Axis Realty Group

FOR LEASE

PARKER SQUARE

700 PARKER SQUARE | FLOWER MOUND, TX 75028



LOCATION

Address

700 Parker Square
Flower Mound, Texas 75028

County

Denton County

Parking

4:1000

UTILITIES

Electric

CoServ

Water/Gas/Trash

Included

Internet

Grande Communications

SPACE

Suite 120

+/- 875 SF

Availability

Immediate

Lease Rate

Call for pricing



ALEX PAYNE

alex@axisrealty.biz

972.979.7727

BRAD ANDRUS

brad@axisrealty.biz

940.368.3588

CHASE TRAUGHBER

chase@axisrealty.biz

972.515.0045

212 South Elm Street | Denton, Texas 76201 | 940.891.2947 | axisrealty.biz

FOR LEASE

PARKER SQUARE

700 PARKER SQUARE | FLOWER MOUND, TX 75028



ALEX PAYNE
alex@axisrealty.biz
972.979.7727

BRAD ANDRUS
brad@axisrealty.biz
940.368.3588

CHASE TRAUGHBER
chase@axisrealty.biz
972.515.0045

212 South Elm Street | Denton, Texas 76201 | 940.891.2947 | axisrealty.biz

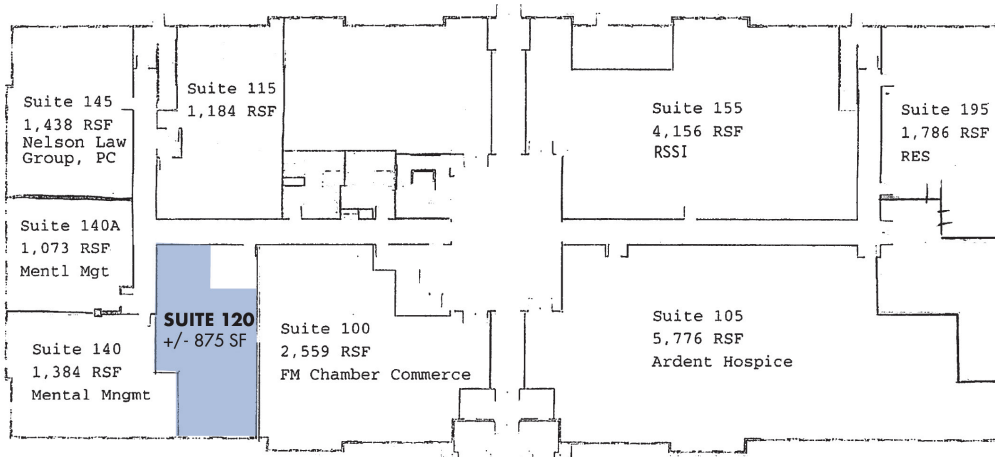
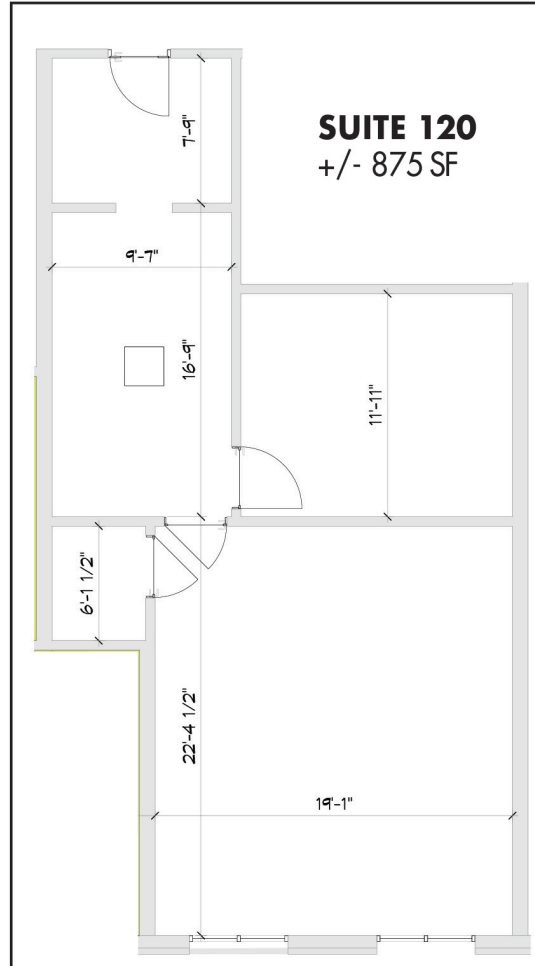
The information contained herein was obtained from sources deemed reliable and is submitted subject to errors, omissions, change of price, rental or other conditions, prior lease, or withdrawal from market without notice.

Copyright © 2020 Axis Realty Group

FOR LEASE

PARKER SQUARE

700 PARKER SQUARE | FLOWER MOUND, TX 75028



ALEX PAYNE
alex@axisrealty.biz
972.979.7727

BRAD ANDRUS
brad@axisrealty.biz
940.368.3588

CHASE TRAUGHBER
chase@axisrealty.biz
972.515.0045

212 South Elm Street | Denton, Texas 76201 | 940.891.2947 | axisrealty.biz

The information contained herein was obtained from sources deemed reliable and is submitted subject to errors, omissions, change of price, rental or other conditions, prior lease, or withdrawal from market without notice.

Copyright© 2020 Axis Realty Group

FOR LEASE

PARKER SQUARE

700 PARKER SQUARE | FLOWER MOUND, TX 75028

SUITE 190



ALEX PAYNE
alex@axisrealty.biz
972.979.7727

BRAD ANDRUS
brad@axisrealty.biz
940.368.3588

CHASE TRAUGHBER
chase@axisrealty.biz
972.515.0045

212 South Elm Street | Denton, Texas 76201 | 940.891.2947 | axisrealty.biz

The information contained herein was obtained from sources deemed reliable and is submitted subject to errors, omissions, change of price, rental or other conditions, prior lease, or withdrawal from market without notice.

Copyright© 2020 Axis Realty Group

