

**AVISON  
YOUNG**



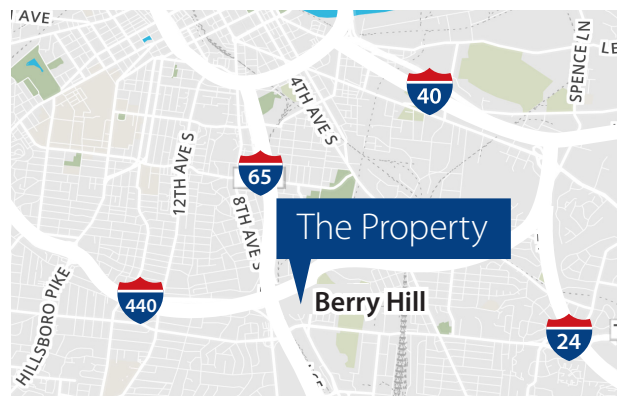
**OFFICE SPACE FOR LEASE**

**2810** | **AZALEA PLACE**  
NASHVILLE, TN 37204

Partnership. Performance.

## Property Overview

- Great creative space with flexible layout
- 3,614 sf available in Berry Hill
- Close proximity to One Hundred Oaks and I-65/440 interchange
- Walking distance to Berry Hill restaurants and retail
- Short drive to Melrose and 12 South
- Ample parking with additional street parking available

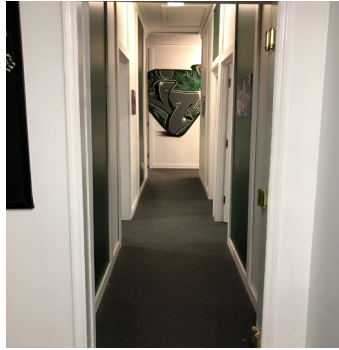


**Joshua Hurt**  
Senior Associate  
615.727.0037  
josh.hurt@avisonyoung.com

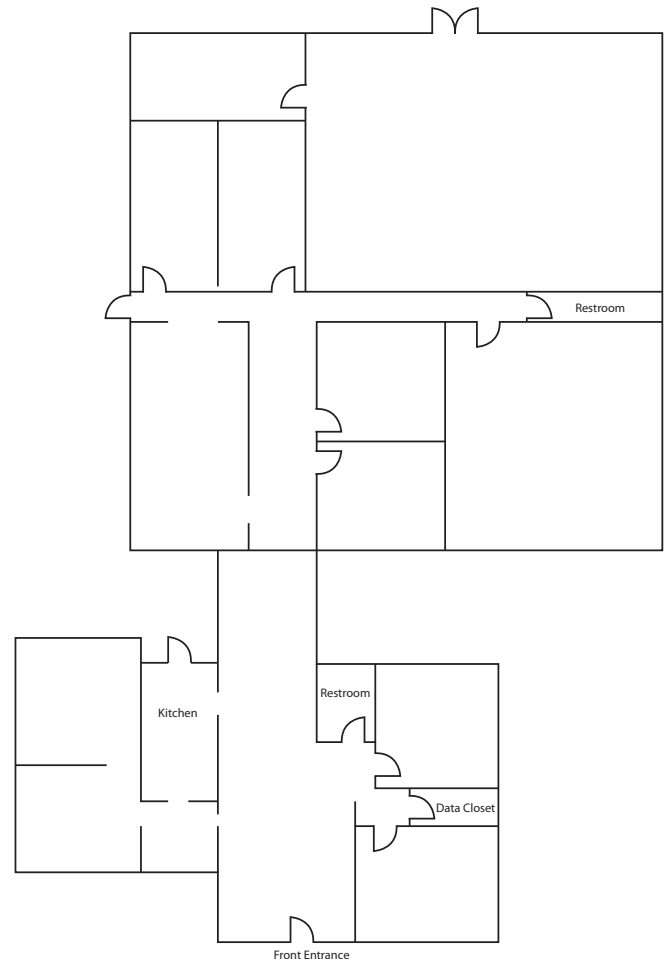
**Jody Elder, CCIM**  
Principal  
615.727.7422  
jody.elder@avisonyoung.com

Avison Young  
700 12th Avenue South  
Suite 302  
Nashville, TN 37203

### Interior Photos



### Floor Plan



For further information or to schedule a tour, please contact:

**Avison Young**  
700 12th Avenue South  
Suite 302  
Nashville, TN 37203  
615.727.7400

**Joshua Hurt**  
Senior Associate  
615.727.0037  
josh.hurt@avisonyoung.com

**Jody Elder, CCIM**  
Principal  
615.727.7422  
jody.elder@avisonyoung.com