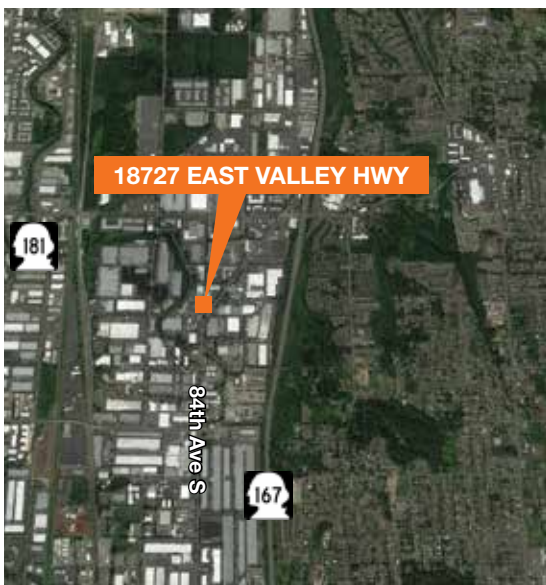




For Sale: \$2,100,000



±18,370 SF total with 4,700 SF of office

4 grade-level doors (1-12'x12', 2-10'x14', 1-9.5'x10')

11'-16.7' clear height

Zoned M2

Exposure to East Valley Highway

Investment or user opportunity

Currently fully leased to six tenants, with all leases expiring by June 2018

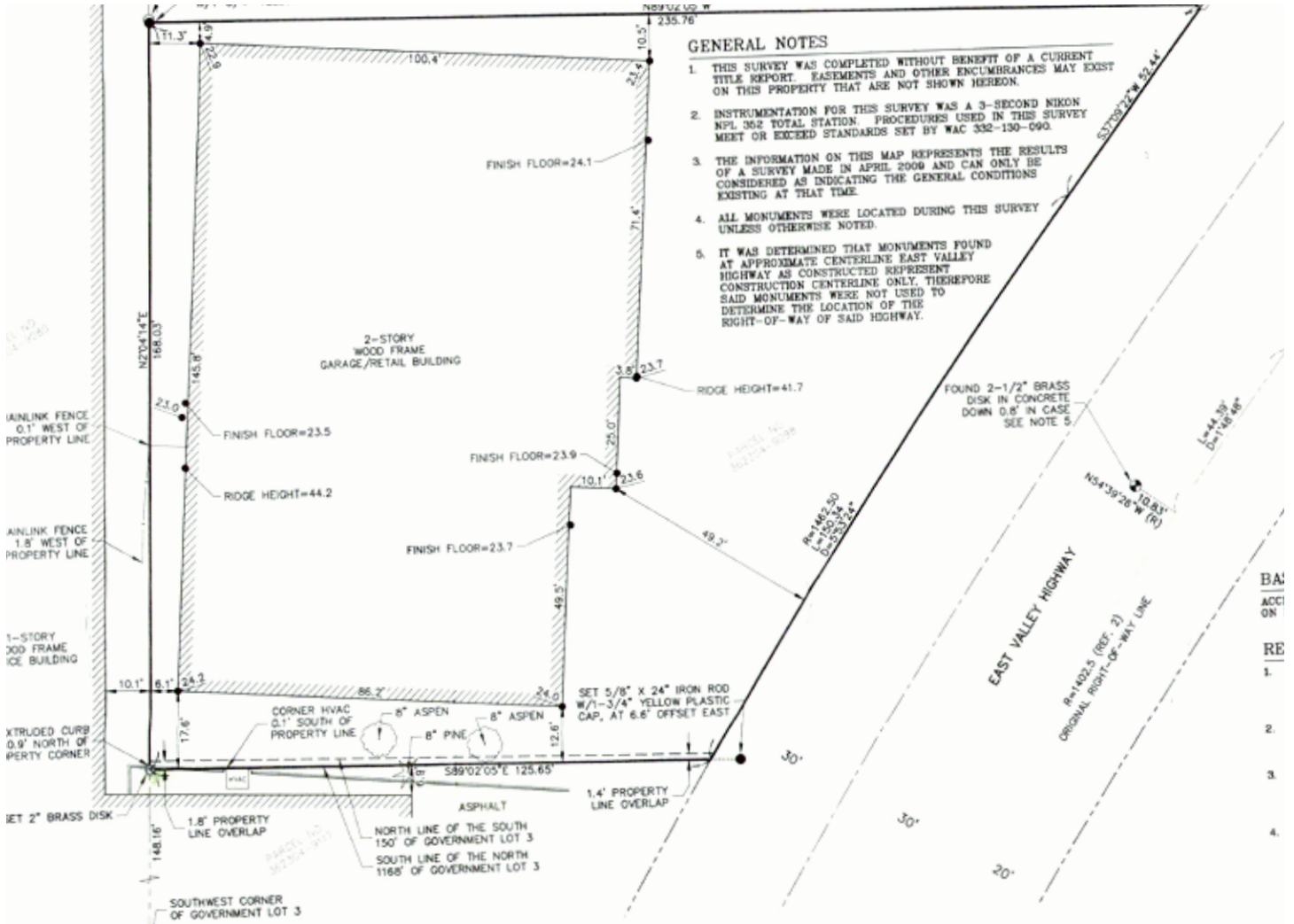
kiddermathews.com

Contact

Thad Mallory, SIOR
206.248.7338
tmallory@kiddermathews.com

18727 East Valley Highway

For Sale: \$2,100,000



Contact

Thad Mallory, SIOR
 206.248.7338
 tmallory@kiddermathews.com

kiddermathews.com

This information supplied herein is from sources we deem reliable. It is provided without any representation, warranty or guarantee, expressed or implied as to its accuracy. Prospective Buyer or Tenant should conduct an independent investigation and verification of all matters deemed to be material, including, but not limited to, statements of income and expenses. Consult your attorney, accountant, or other professional advisor.