



5420 Corporate Blvd.

Baton Rouge, Louisiana 70808

Property Highlights

- Office Building in Baton Rouge's Premier Office Market
- Located on Corporate Blvd Near College Dr. and I-10
- Flexible Floor Plans and Ample Parking
- Full Service Rate: Base year 2020
- Gates After Hours Key Card Access

Available Spaces

Spaces	Lease Rate	Size (SF)
Suite 103	\$16.00 SF/yr	3,394
Suite 104	\$16.00 SF/yr	815
Suite 205	\$16.00 SF/yr	1,662
Suite 208	\$16.00 SF/yr	1,358
Suite 104	\$16.00 SF/yr	815
Suite 105	\$16.00 SF/yr	1,339
Suite 304	\$16.00 SF/yr	676
Suite 305	\$16.00 SF/yr	874



For more information

Jonann Stutzman

O: 225 297 7864 | C: 225 445 0473
jonann@latterblum.com

Ty Gose, SIOR, CCIM

O: 225 295 0800 | C: 225 297 7808
ty@latterblum.com

NO WARRANTY OR REPRESENTATION, EXPRESS OR IMPLIED, IS MADE AS TO THE ACCURACY OF THE INFORMATION CONTAINED HEREIN, AND THE SAME IS SUBMITTED SUBJECT TO ERRORS, OMISSIONS, CHANGE OF PRICE, RENTAL OR OTHER CONDITIONS, PRIOR SALE, LEASE OR FINANCING, OR WITHDRAWAL WITHOUT NOTICE, AND OF ANY SPECIAL LISTING CONDITIONS IMPOSED BY OUR PRINCIPALS NO WARRANTIES OR REPRESENTATIONS ARE MADE AS TO THE CONDITION OF THE PROPERTY OR ANY HAZARDS CONTAINED THEREIN ARE ANY TO BE IMPLIED. LICENSED IN LOUISIANA.

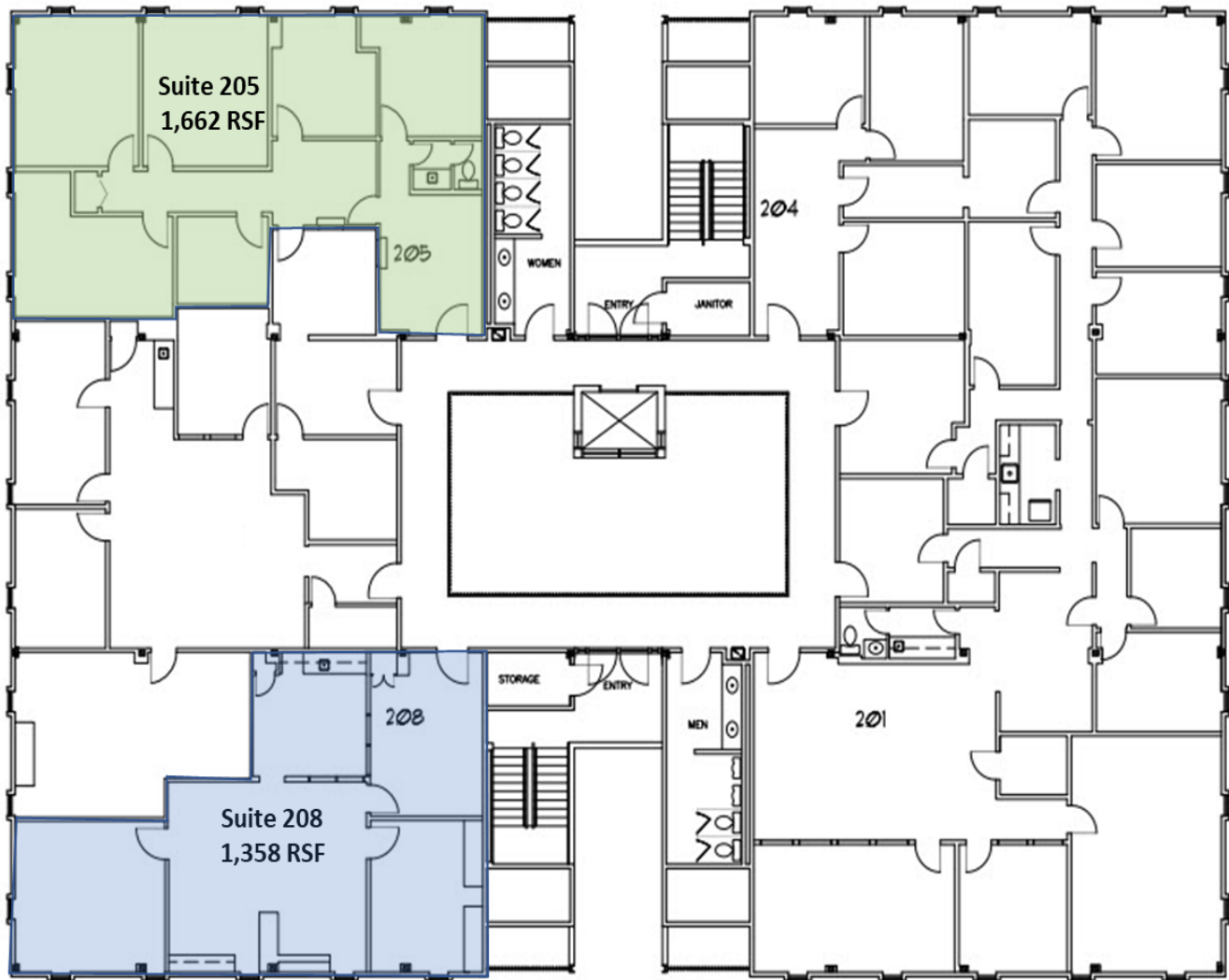
1700 City Farm Drive
Baton Rouge, LA 70806
225 295 0800 tel
latterblum.com



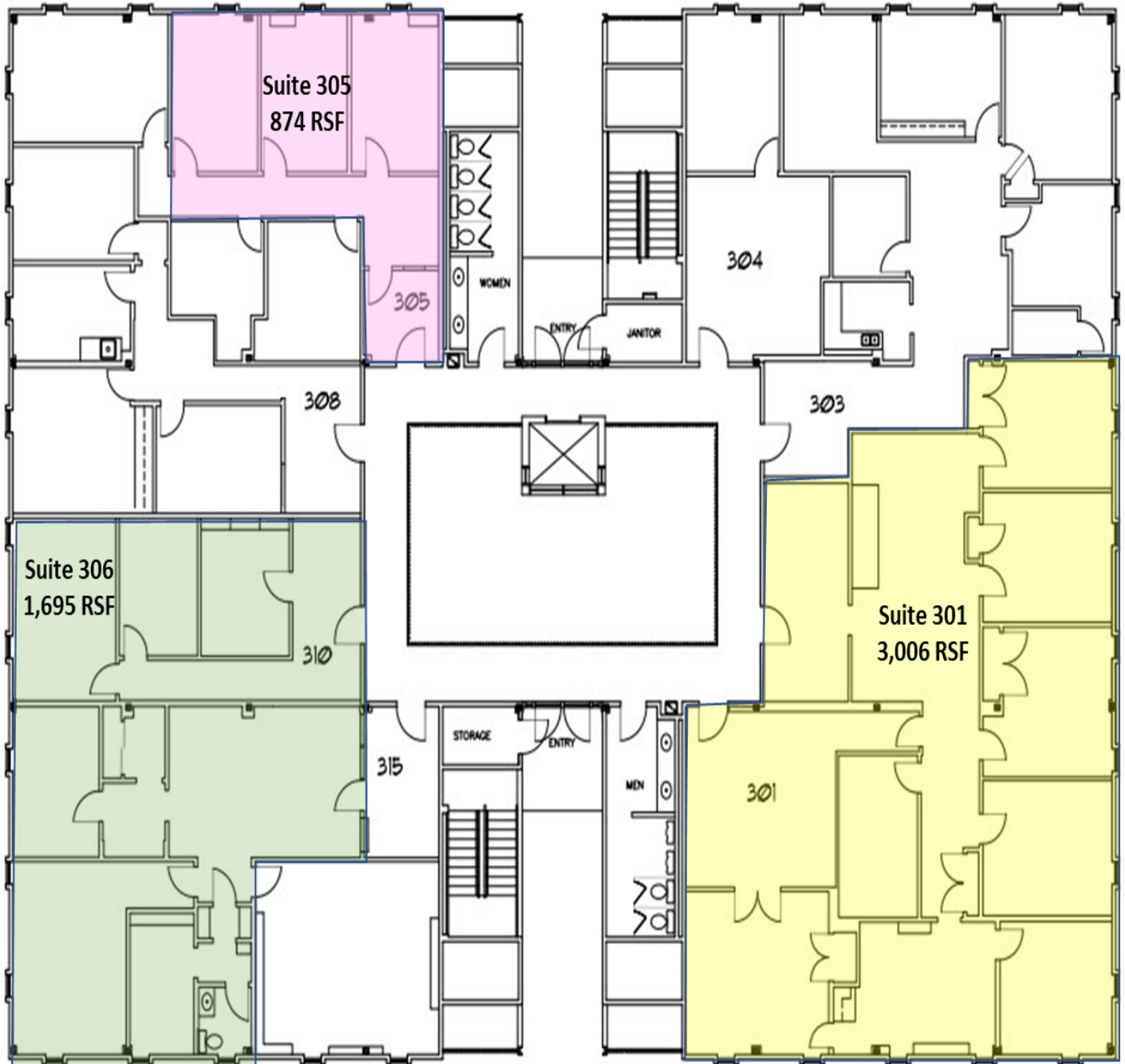
5420 CORPORATE
FIRST FLOOR PLAN



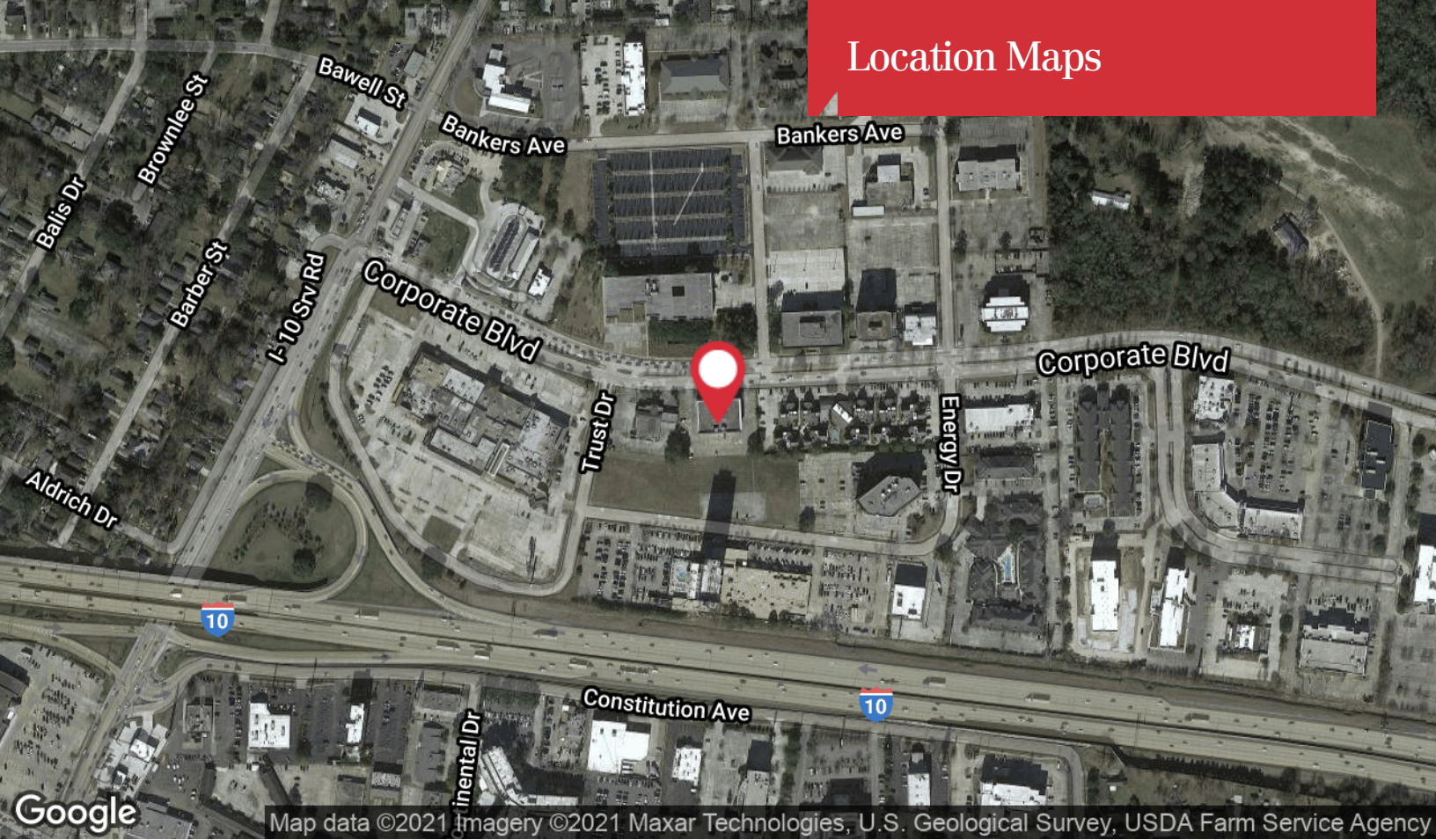
5420 CORPORATE
SECOND FLOOR



5420 CORPORATE
THIRD FLOOR



Location Maps



Map data ©2021 Imagery ©2021 Maxar Technologies, U.S. Geological Survey, USDA Farm Service Agency



Map data ©2021