

**AVISON  
YOUNG**

YOUR NAME HERE

**OFFICE SPACE FOR LEASE**

136

**Quade Drive**  
Cary, NC 27513

Partnership. Performance.

## Opportunity

Type	Single-story office space
Location	Close proximity to Cary Parkway and Weston Parkway
Available Date	October 1, 2019
Available	2,800 sf
Rental Rate	\$14.00/sf or \$3,267/month, mg. Landlord pays TICAM and water; tenant pays utilities and janitorial

**Michael Vulpis**  
**Senior Vice President**  
919.420.1562  
michael.vulpis@avisonyoung.com



**CANADA**  
**BEST  
MANAGED  
COMPANIES**

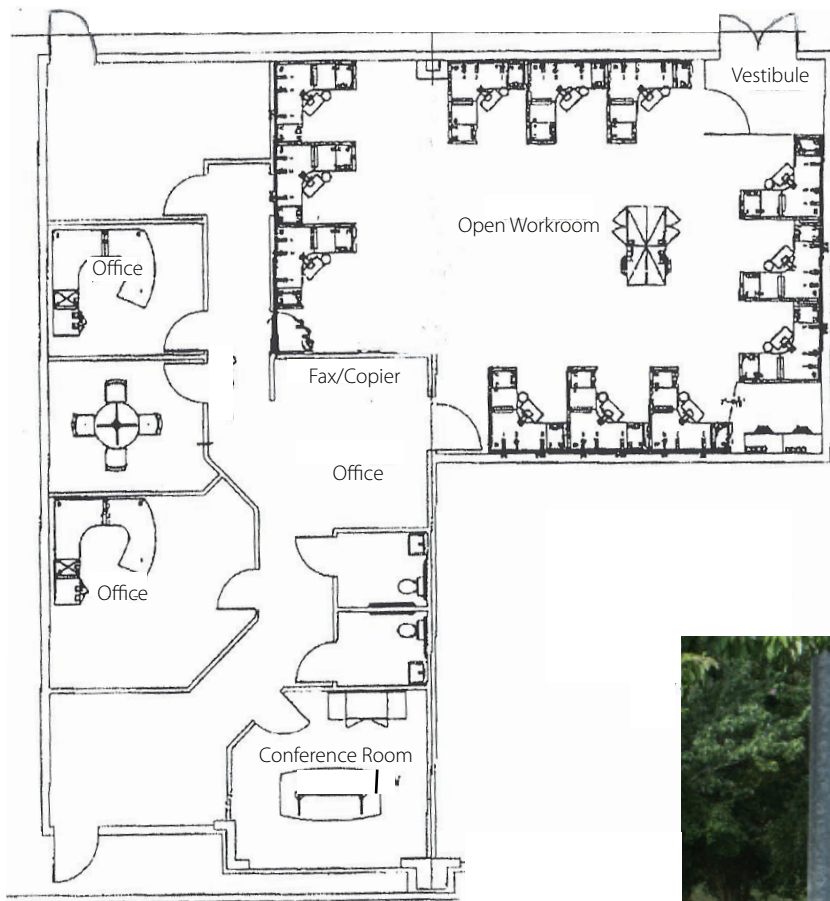
Platinum member

# 136

**Quade Drive**  
Cary, NC 27513

## Floor Plan

2,800 SF Available



## Amenities

- 100% office fitup
- 100% heated and cooled
- Easy access to Research Triangle Park and Raleigh-Durham International Airport
- Building signage available
- Three private offices
- Conference room
- Reception area
- Two bathrooms
- Breakroom
- Very large open space for desk cubicles or training area
- Move-in condition



**Michael Vulpis**  
**Senior Vice President**  
919.420.1562  
michael.vulpis@avisonyoung.com

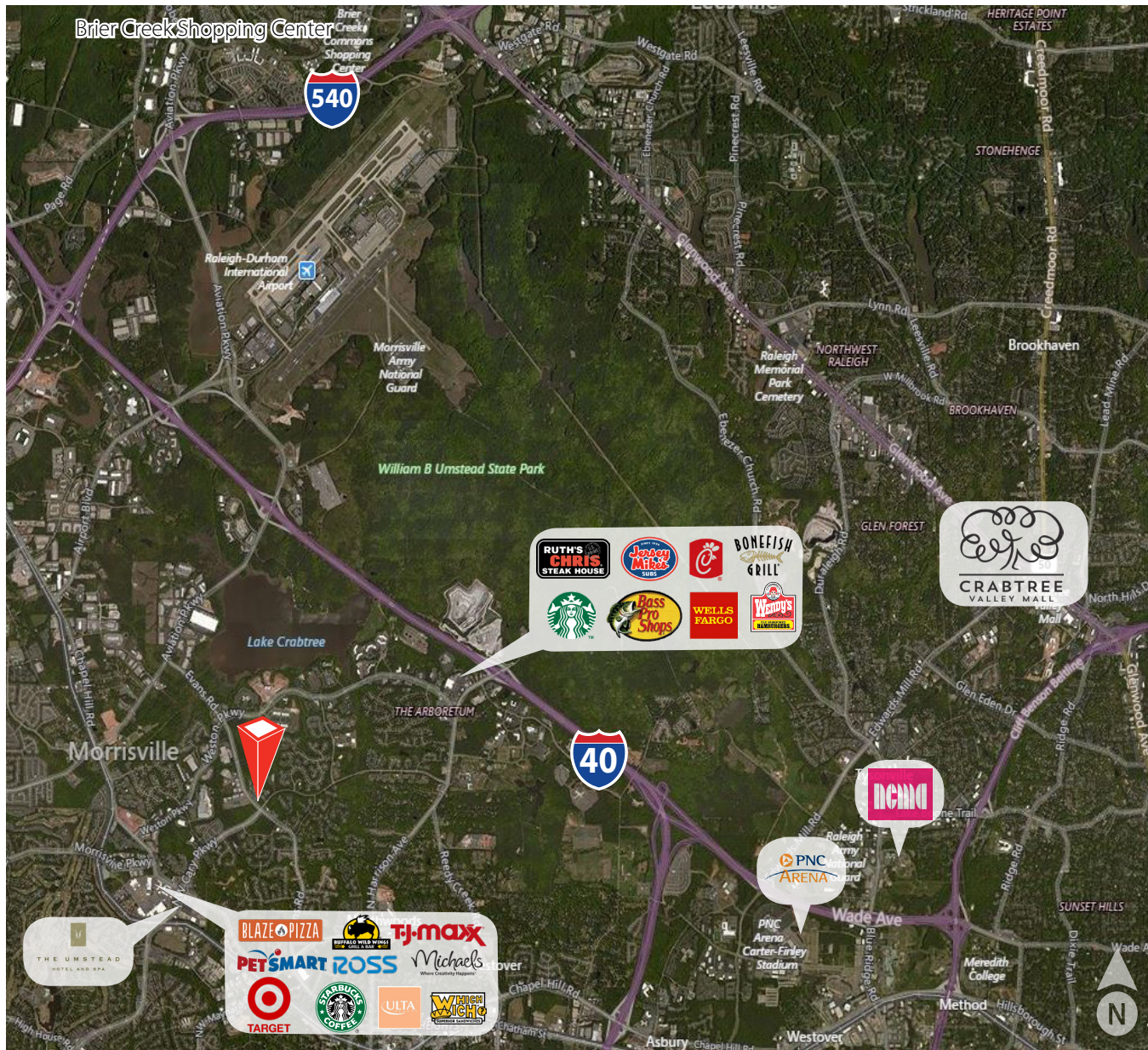
5440 Wade Park Boulevard, Suite 200 | Raleigh, NC 27607 | 919.785.3434 | avisonyoung.com

The information contained herein was obtained from sources believed reliable; however, Avison Young makes no guarantees, warranties, or representations as to the completeness or accuracy thereof. The presentation of this property is submitted subject to errors, omissions, changes of price or conditions prior to sale or lease, or withdrawal without notice.

# 136

## Quade Drive Cary, NC 27513

### Nearby Amenities



**Michael Vulpis**  
Senior Vice President  
919.420.1562  
michael.vulpis@avisonyoung.com

5440 Wade Park Boulevard, Suite 200 | Raleigh, NC 27607 | 919.785.3434 | avisonyoung.com

The information contained herein was obtained from sources believed reliable; however, Avison Young makes no guarantees, warranties, or representations as to the completeness or accuracy thereof. The presentation of this property is submitted subject to errors, omissions, changes of price or conditions prior to sale or lease, or withdrawal without notice.