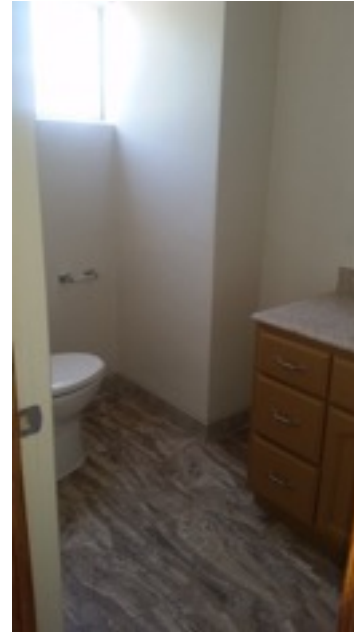
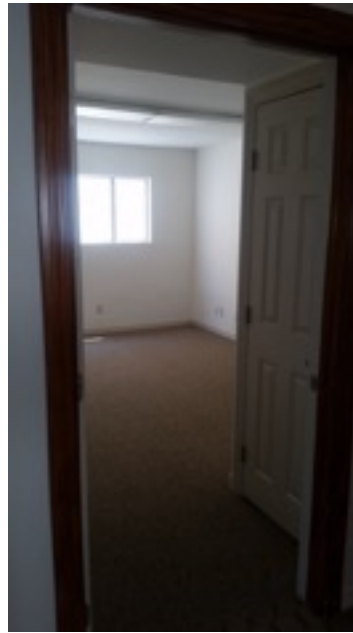
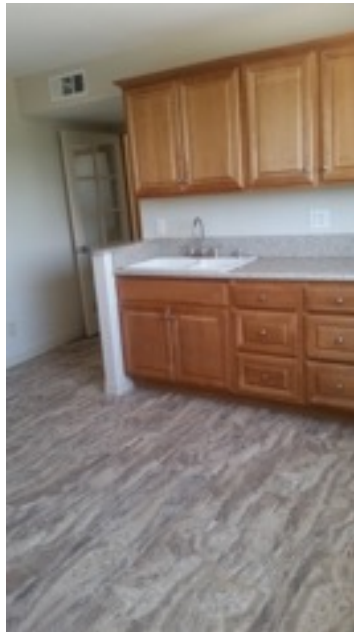




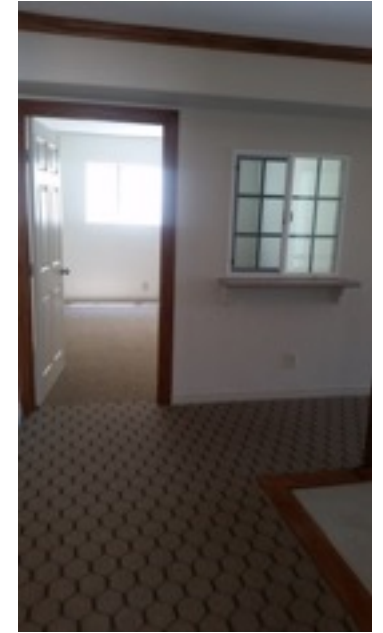
entrance from alley



Front entrance



Back



Hallway view
Office room

Kitchen/lounge

Office room

Bathroom

OFFICE FOR LEASE

12069 Jefferson Blvd. Los Angeles, CA. 92030

-Heart of Silicon Beach in Playa Vista

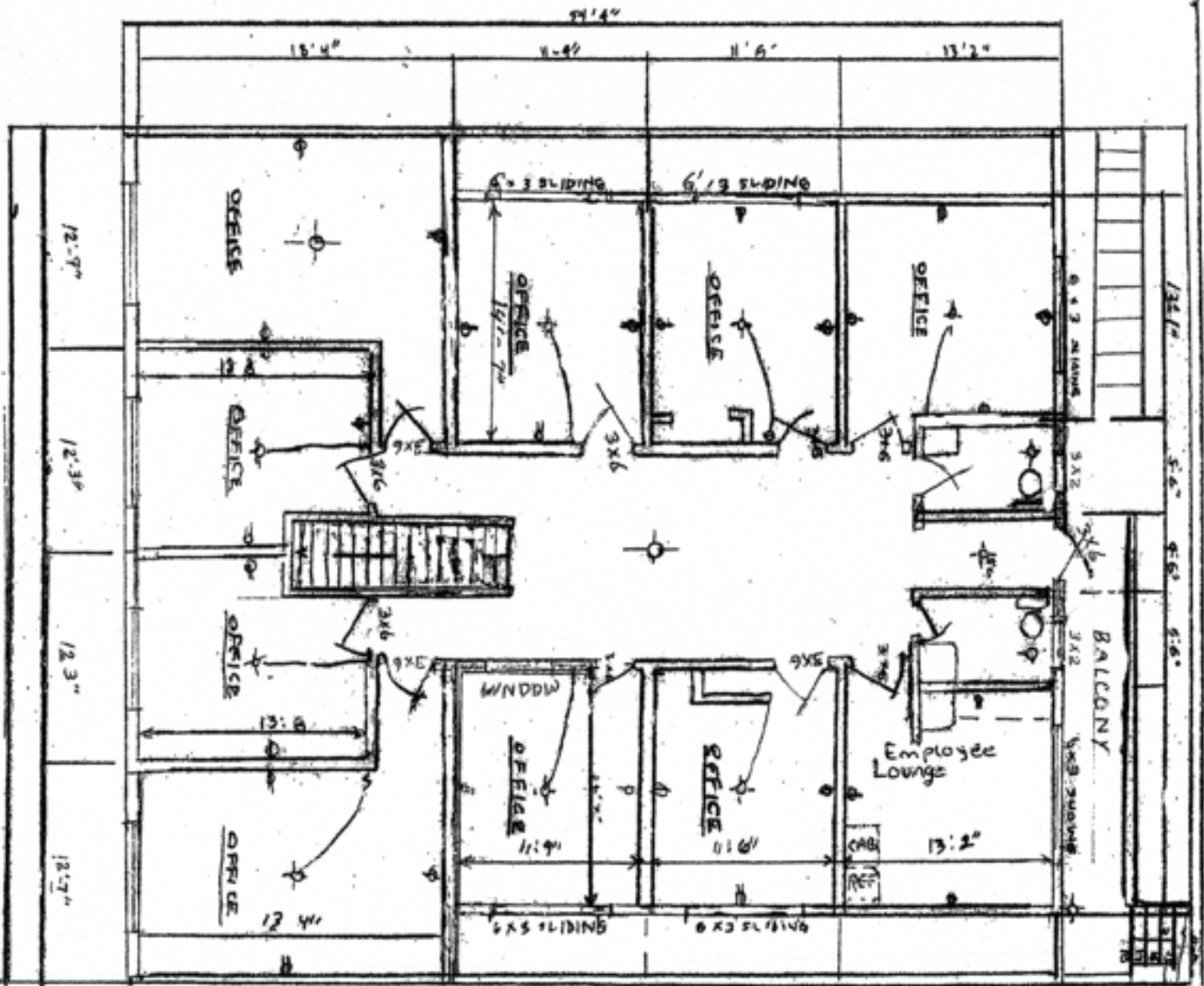
-Vacant 2400 Sq. Ft. Office Building / Space

- Newly renovated
- Only \$5,000.00 per month
- Close to LMU
- Great central location

Featuring:

- 9 full Size Office Rooms
- 2 Bathrooms
- Huge Lounge room for employees
- 6 Parking spaces
- Availabe now

FOR INFORMATION PLEASE CALL (310) 827-3873 OR (323) 870-5756
EMAIL consulshaby@hotmail.com



12069 JEFFERSON BLVD.

PHONE#: 310-827-3873

323-870-5756