

ONE LIBERTY PLAZA

PARTIAL 29TH FLOOR: 13,122 RSF

NEWMARK

PREMISES

Partial 29th Floor - 13,122 RSF

POSSESSION

Immediate

TERM

Sublease through July 31, 2021

ASKING

Upon Request

COMMENTS

- Financially strong Sublandlord
- Built with a mix of offices and open area
- Excellent light and views
- In-building connection to WTC and Fulton Street transit hubs

Josh Gosin

212-372-2076

josh.gosin@nrmk.com

Taylor Goike

469-467-2081

taylor.goike@nrmk.com

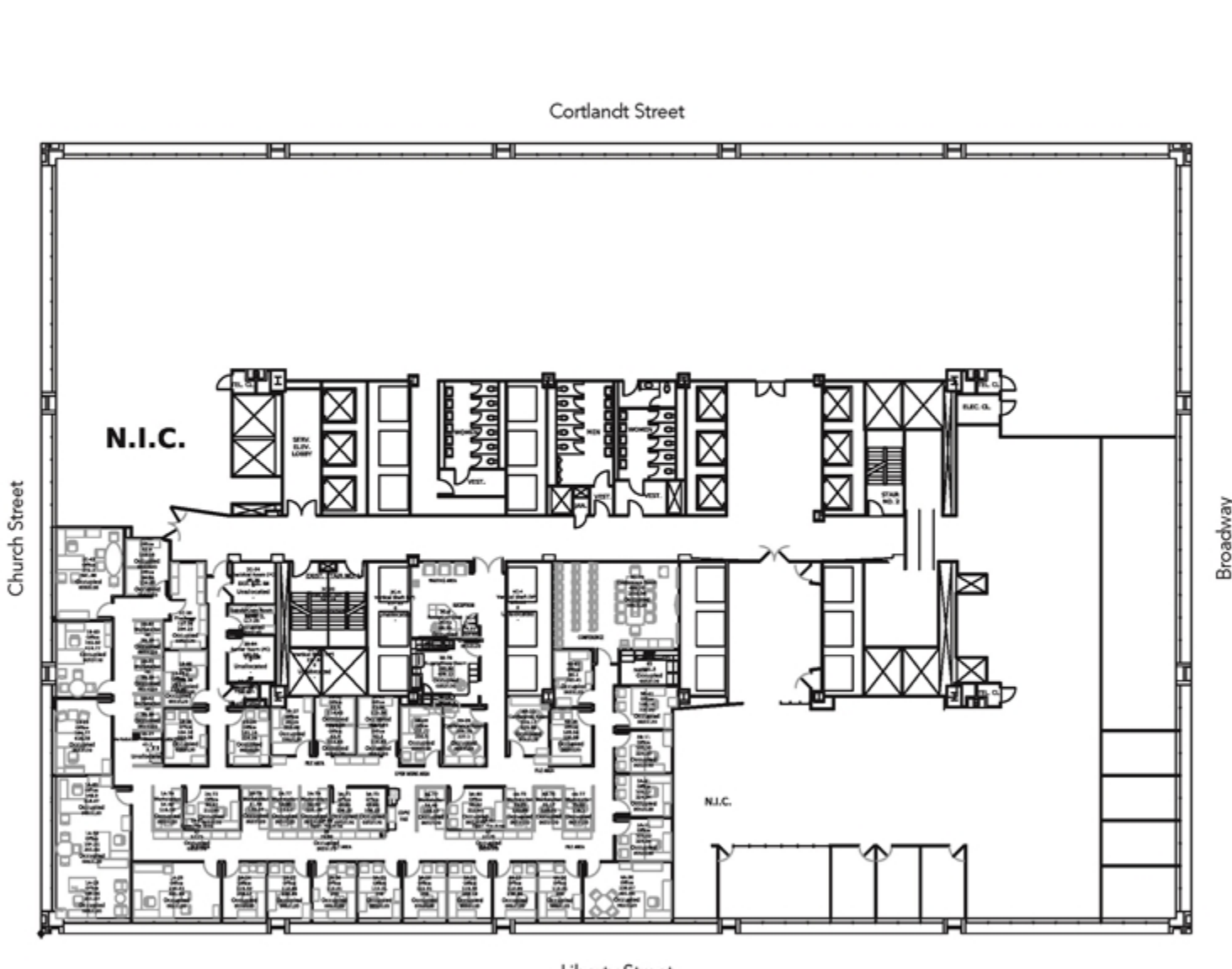
Mitchell Wolff

469-467-2000

mitchell.wolff@nrmk.com

FLOOR PLAN

Partial 29th Floor - 13,122 RSF



ONE LIBERTY PLAZA

JOSH GOSIN

212-372-2076

josh.gosin@nrmk.com

TAYLAR GOIKE

469-467-2081

taylor.goike@nrmk.com

MITCHELL WOLFF

469-467-2000

mitchell.wolff@nrmk.com

NEWMARK

The information contained herein has been obtained from sources deemed reliable but has not been verified and no guarantee, warranty or representation, either express or implied, is made with respect to such information. Terms of sale or lease and availability are subject to change or withdrawal without notice.

[DOWNLOAD BROCHURE](#)

125 Park Avenue, New York, NY 10017 | 212-372-2289

The information contained herein has been obtained from sources deemed reliable but has not been verified and no guarantee, warranty or representation, either express or implied, is made with respect to such information. Terms of sale or lease and availability are subject to change or withdrawal without notice.

©2022 Newmark. All Rights Reserved.