

# RETAIL SPACE FOR LEASE

## 5946 MEIJER DRIVE



ONE EAST FOURTH STREET, SUITE 500, CINCINNATI, OH 45202  
513.241.2300







**ADDRESS:** 5946 Meijer Drive  
Milford, OH 45150

**FOR LEASE:** 1,604 SF

**PRICING:** \$16.00 PSF NNN

- ▶ Space is divisible
- ▶ Fronts Meijer and Butterbee's
- ▶ Rapidly growing area
- ▶ Excellent parking
- ▶ Attractive, highly visible center
- ▶ No Earnings Tax!
- ▶ Corner traffic light
- ▶ New Hot Head Burritos Now Open

**TRAFFIC COUNTS:**

- ▶ SR 28 at Wolfpen Pleasant Hill Road = 22,841 AADT in 2011
- ▶ SR 28 at Cook Road = 5,958 AADT in 2011

# FEATURES





**SITE**

**meijer**

**DQ**

**Butterbees**  
AMERICAN GRILLE

**marco's**  
Pizza

**GameStop**  
POWER TO THE PLAYERS

**Starbucks**

**Panera**  
BREAD

**Sprint**

**meijer**  
gas station

**Gold Star Chili**

**Huntington**

**DONATOS**  
PIZZA SUBS SALADS

**CASH & LAND**

**May Thai**

**Skyline**  
CREEK

**SONIC**  
America's Drive-Ins

**White Castle**

**STEAK SHAKE**  
FAMOUS FOR STEAKBURGERS

**SUBWAY**

**palm beach tan**

**KROGER FUEL**

**Wendy's**

**Kroger**

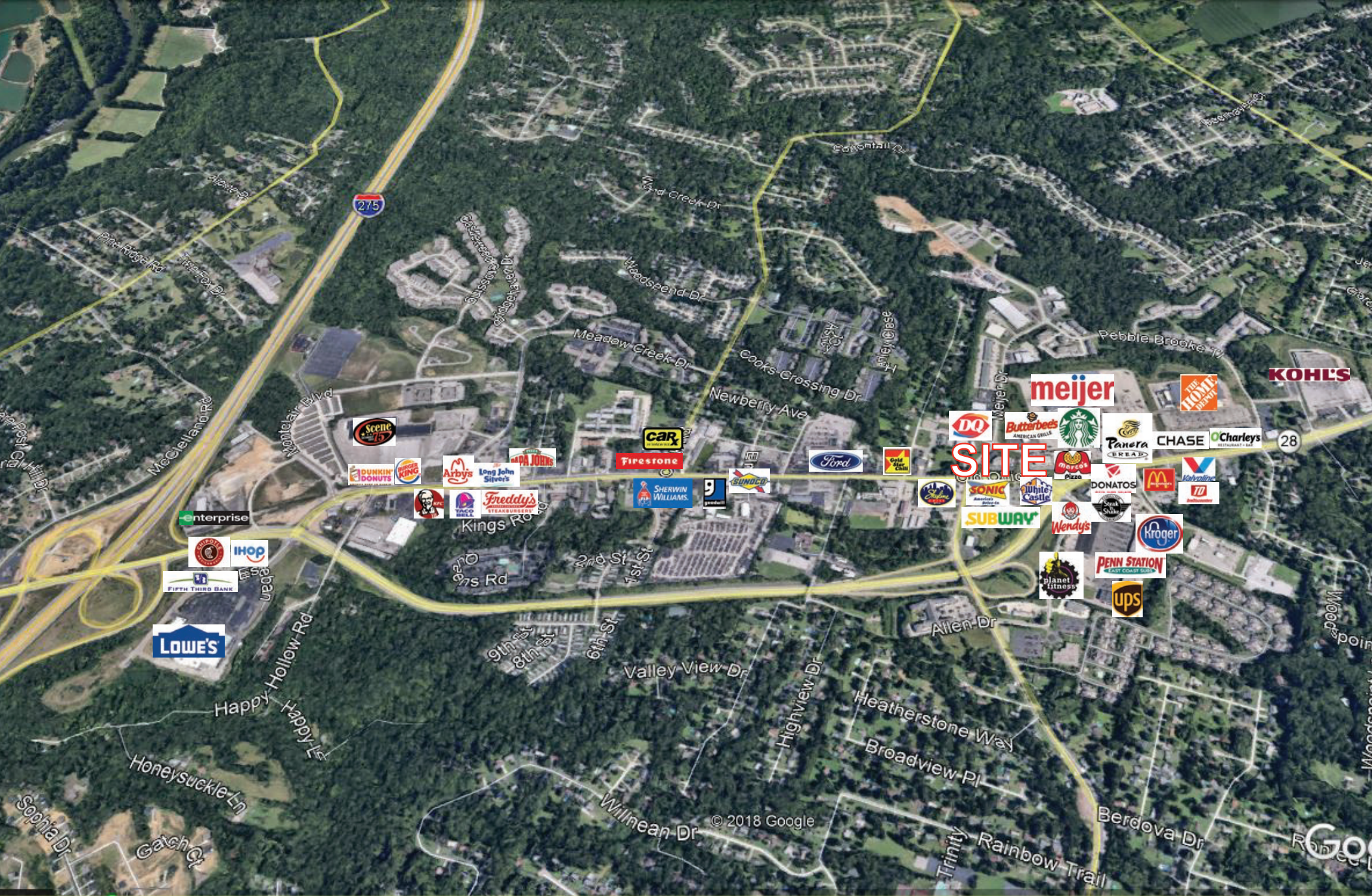
**PENN STATION**  
EAST COAST SUBS

**Google**  
**ups**

Image Landsat / Copernicus

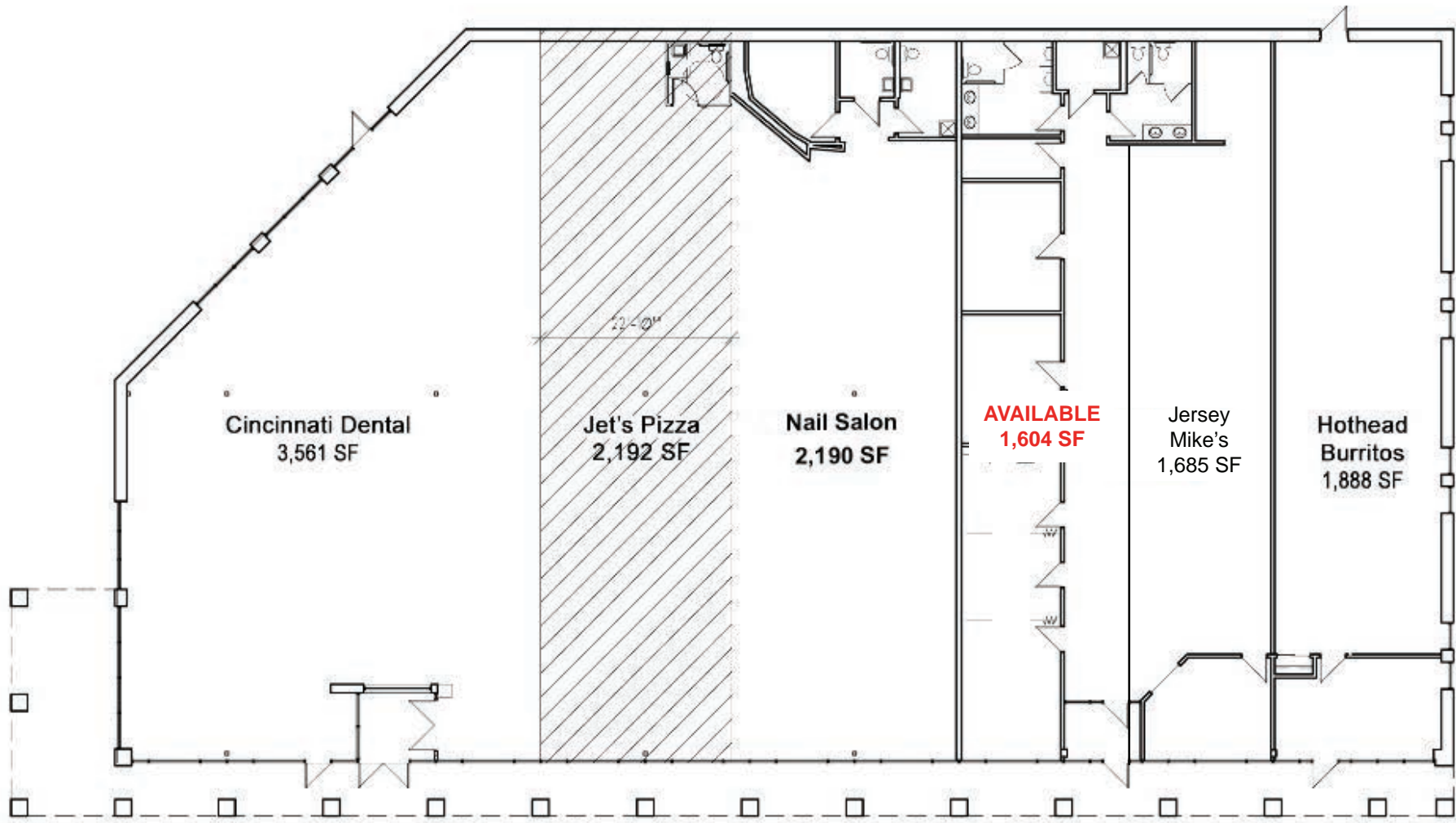
# LOCATION





AERIAL





FLOOR PLAN  
NOT TO SCALE

# SITE PLAN

POPULATION	1 MILE	3 MILE	5 MILE
2000 Population	7,093	36,475	64,508
2010 Population	7,257	40,441	71,825
2018 Population	7,428	41,739	74,743
2023 Population	7,516	42,590	76,449
2000-2010 Annual Rate	0.23%	1.04%	1.08%
2010-2018 Annual Rate	0.29%	0.40%	0.50%
2018-2023 Annual Rate	0.24%	0.40%	0.45%
2018 Male Population	47.7%	49.2%	49.3%
2018 Female Population	52.3%	50.8%	50.7%
2018 Median Age	42.7	39.9	40.7

RACE AND ETHNICITY	1 MILE	3 MILE	5 MILE
2018 White Alone	91.7%	93.1%	93.6%
2018 Black Alone	3.4%	2.4%	1.9%
2018 American Indian/Native Alaskan Alone	0.1%	0.2%	0.2%
2018 Asian Alone	1.7%	1.7%	2.0%
2018 Pacific Islander Alone	0.0%	0.0%	0.0%
2018 Other Race	0.9%	0.6%	0.5%
2018 Two or More Races	2.2%	2.0%	1.7%
2018 Hispanic Origin (Any Race)	2.8%	2.3%	2.3%

HOUSEHOLDS	1 MILE	3 MILE	5 MILE
2000 Households	2,730	13,564	23,441
2010 Households	2,993	15,348	26,398
2018 Households	3,076	15,901	27,548
2023 Households	3,115	16,238	28,196
2000-2010 Annual Rate	0.92%	1.24%	1.20%
2010-2018 Annual Rate	0.34%	0.44%	0.53%
2018-2023 Annual Rate	0.25%	0.42%	0.47%
2018 Average Household Size	2.34	2.60	2.69

MEDIAN HOUSEHOLD INCOME	1 MILE	3 MILE	5 MILE
2018 Median Household Income	\$62,722	\$74,059	\$80,987
2023 Median Household Income	\$69,904	\$81,476	\$88,751
2018-2023 Annual Rate	2.19%	1.93%	1.85%

AVERAGE HOUSEHOLD INCOME	1 MILE	3 MILE	5 MILE
2018 Average Household Income	\$83,325	\$93,513	\$108,795
2023 Average Household Income	\$96,365	\$106,570	\$122,421
2018-2023 Annual Rate	2.95%	2.65%	2.39%

PER CAPITA INCOME	1 MILE	3 MILE	5 MILE
2018 Per Capita Income	\$34,594	\$35,496	\$40,333
2023 Per Capita Income	\$39,943	\$40,455	\$45,396
2018-2023 Annual Rate	2.92%	2.65%	2.39%

HOUSING	1 MILE	3 MILE	5 MILE
2000 Total Housing Units	2,866	13,997	24,258
2000 Owner Occupied Housing Units	76.8%	78.4%	79.1%
2000 Renter Occupied Housing Units	18.5%	18.5%	17.6%
2000 Vacant Housing Units	4.8%	3.1%	3.4%
2010 Total Housing Units	3,316	16,351	28,080
2010 Owner Occupied Housing Units	64.7%	74.4%	76.3%
2010 Renter Occupied Housing Units	25.5%	19.5%	17.7%
2010 Vacant Housing Units	9.7%	6.1%	6.0%
2018 Total Housing Units	3,451	16,855	29,211
2018 Owner Occupied Housing Units	58.9%	71.0%	73.3%
2018 Renter Occupied Housing Units	30.3%	23.3%	21.0%
2018 Vacant Housing Units	10.9%	5.7%	5.7%
2023 Total Housing Units	3,517	17,264	29,978
2023 Owner Occupied Housing Units	59.2%	71.5%	73.7%
2023 Renter Occupied Housing Units	29.4%	22.6%	20.3%
2023 Vacant Housing Units	11.4%	5.9%	5.9%

**Data Note:** Income is expressed in current dollars

**Source:** U.S. Census Bureau, Census 2010 Summary File 1. Esri forecasts from 2018 and 2023. Esri converted Census 2000 data into 2010 geography.

July 12, 2018

# DEMOGRAPHICS





**FOR FURTHER INFORMATION, PLEASE CONTACT:**

**CHRIS NACHTRAB** Managing Director 513.864.6042 [chris.nachtrab@ngkf.com](mailto:chris.nachtrab@ngkf.com)  
**TC BARTOSZEK** Associate Director 513.864.6046 [tc.bartoszek@ngkf.com](mailto:tc.bartoszek@ngkf.com)

