



Features double-door elevator lobby exposure

- Suite 300 - 6,322 rsf
- \$28.00/sf full service
- 4.5/1,000 parking ratio
- Executive conference room
- Balance of perimeter office and open space
- Great northeast Tampa location in Highwoods Preserve - join corporate neighbors like Depository Trust 7 Clearing Corporation, MetLife and Syniverse
- Numerous retail and restaurant options in close proximity

Get more information

Anne-Marie Ayers

Principal

+1 813 444 0620

annemarie.ayers@avisonyoung.com

Laurie Hynes

Marketing Coordinator

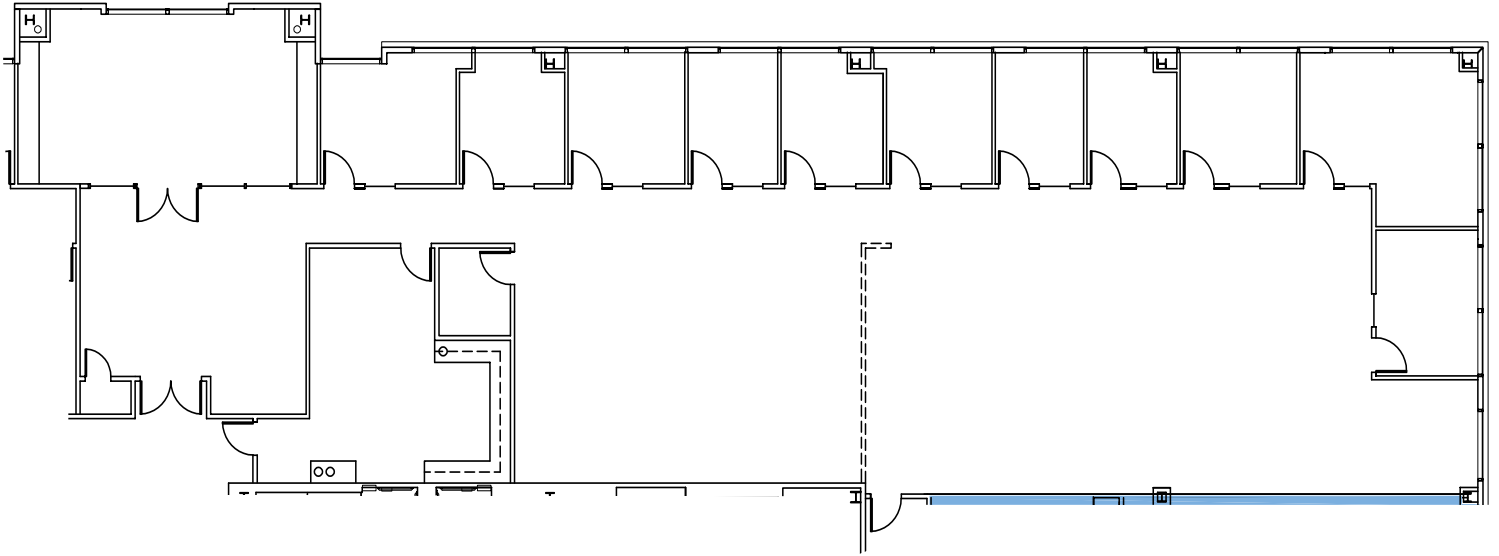
+1 813 444 0621

lauriehynes@avisonyoung.com

avisonyoung.com

Suite 300
6,322 sf

Burns & Wilcox Center
18302 Highwoods Preserve Parkway
Tampa, FL 33647



**Get more
information**

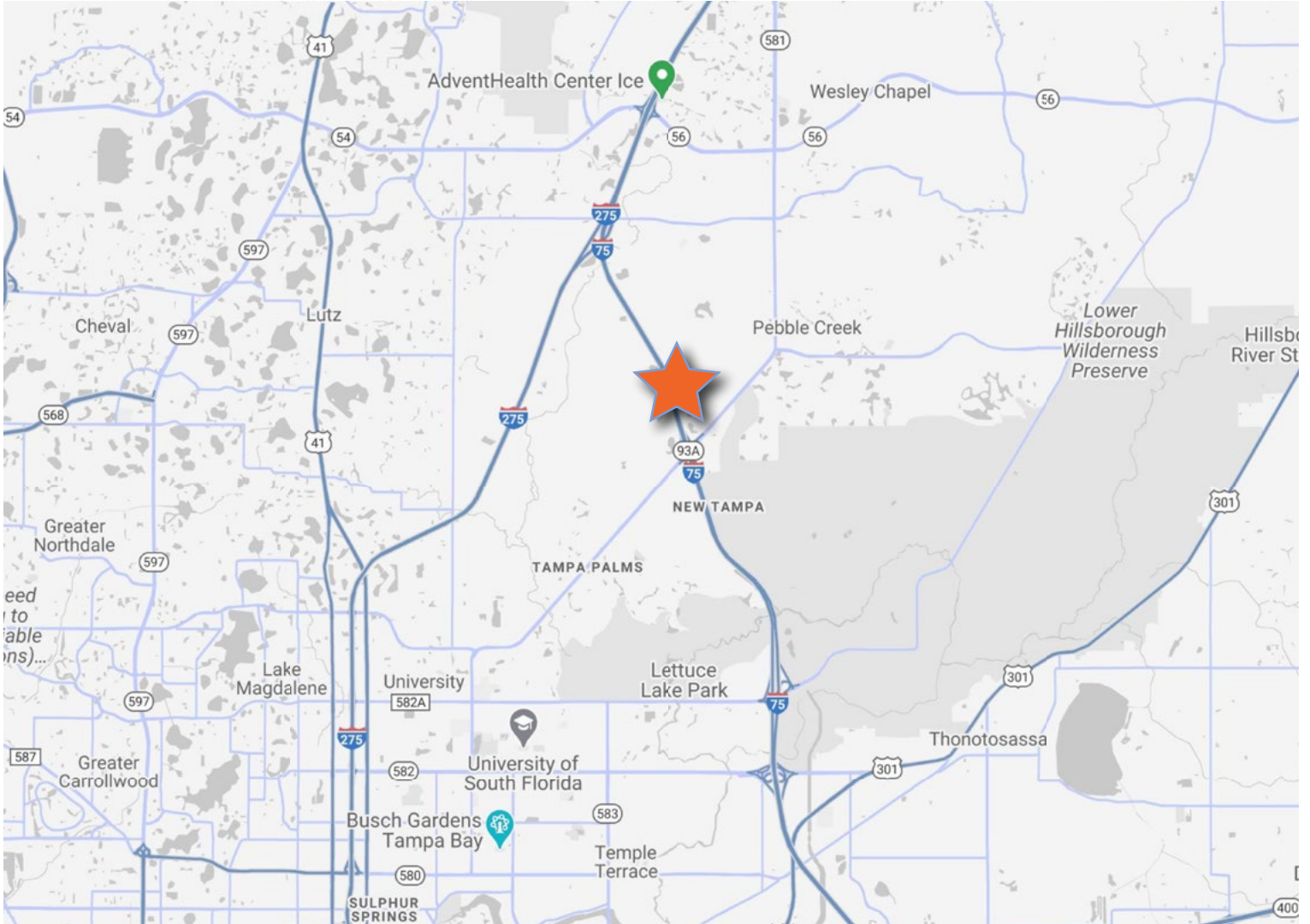
Anne-Marie Ayers
Principal
+1 813 444 0620

Laurie Hynes
Marketing Coordinator
+1 813 444 0621

**AVISON
YOUNG**

Location Map

Burns & Wilcox Center
18302 Highwoods Preserve Parkway
Tampa, FL 33647



**Get more
information**

Anne-Marie Ayers
Principal
+1 813 444 0620

Laurie Hynes
Marketing Coordinator
+1 813 444 0621

**AVISON
YOUNG**