

GRANT @ ORMOND

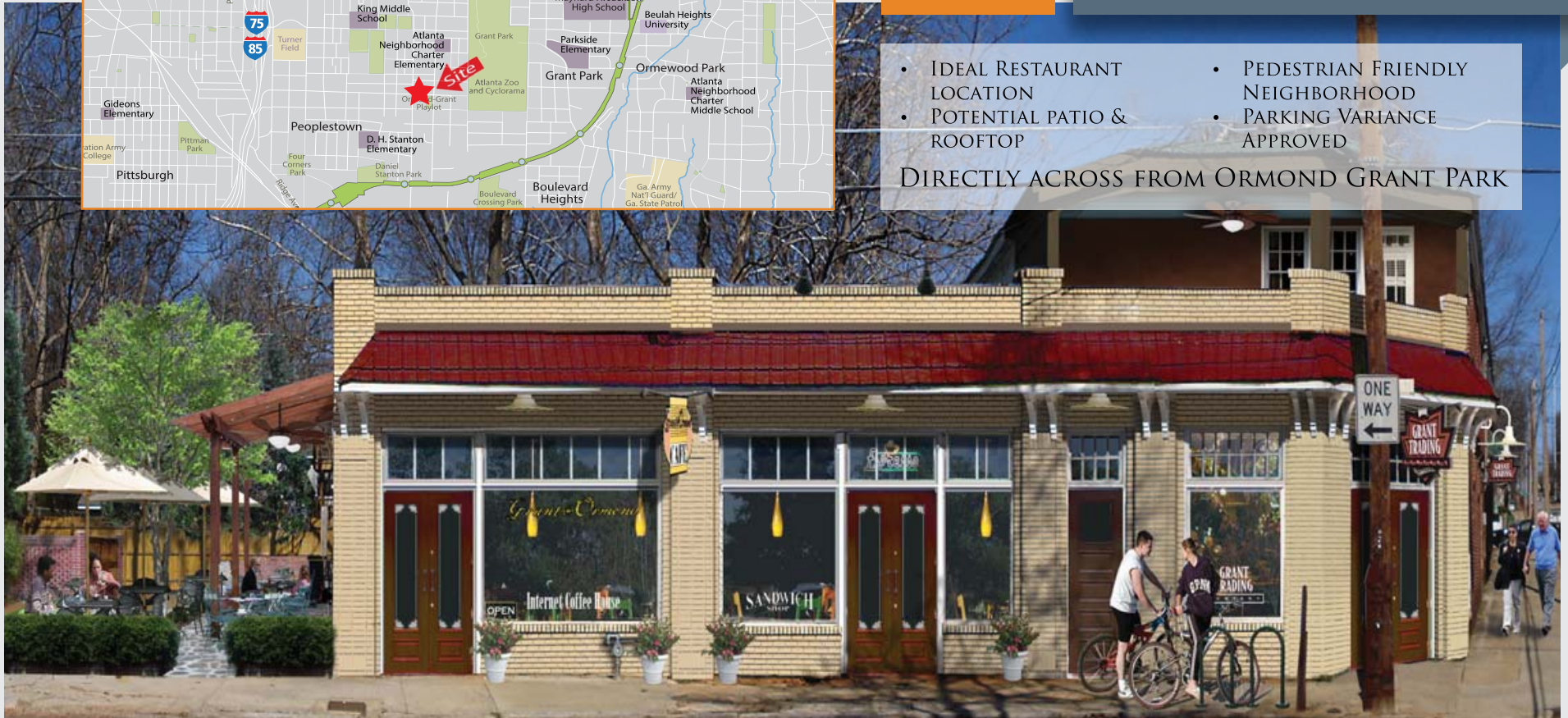
RESTAURANT
& RETAIL
OPPRUNITY

330 ORMOND STREET SE
ATLANTA, GEORGIA
ONLY 850 SF REMAINING AND
PAD FOR 3,000 SF BUILDING

- IDEAL RESTAURANT LOCATION
- POTENTIAL PATIO & ROOFTOP

- PEDESTRIAN FRIENDLY NEIGHBORHOOD
- PARKING VARIANCE APPROVED

DIRECTLY ACROSS FROM ORMOND GRANT PARK





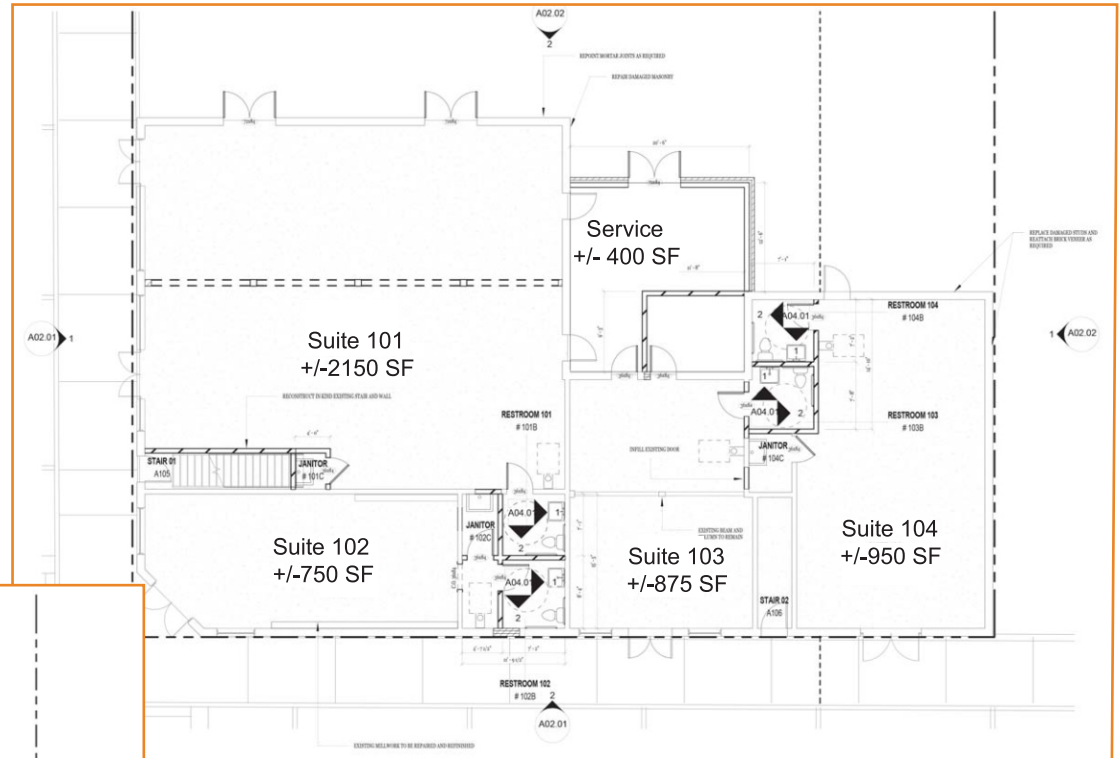
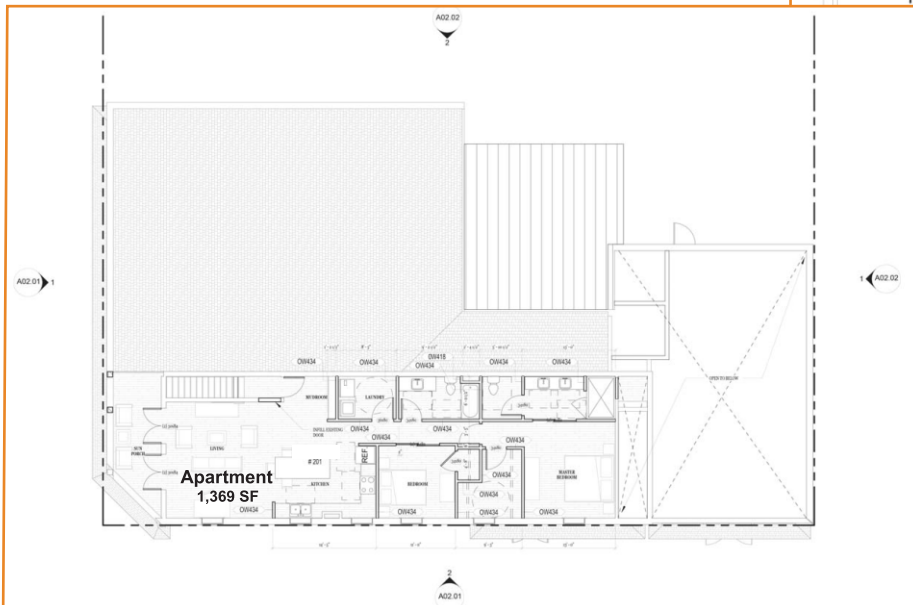
**GRANT @ ORMOND
AERIAL**





**GRANT @ ORMOND
FLOOR PLAN**

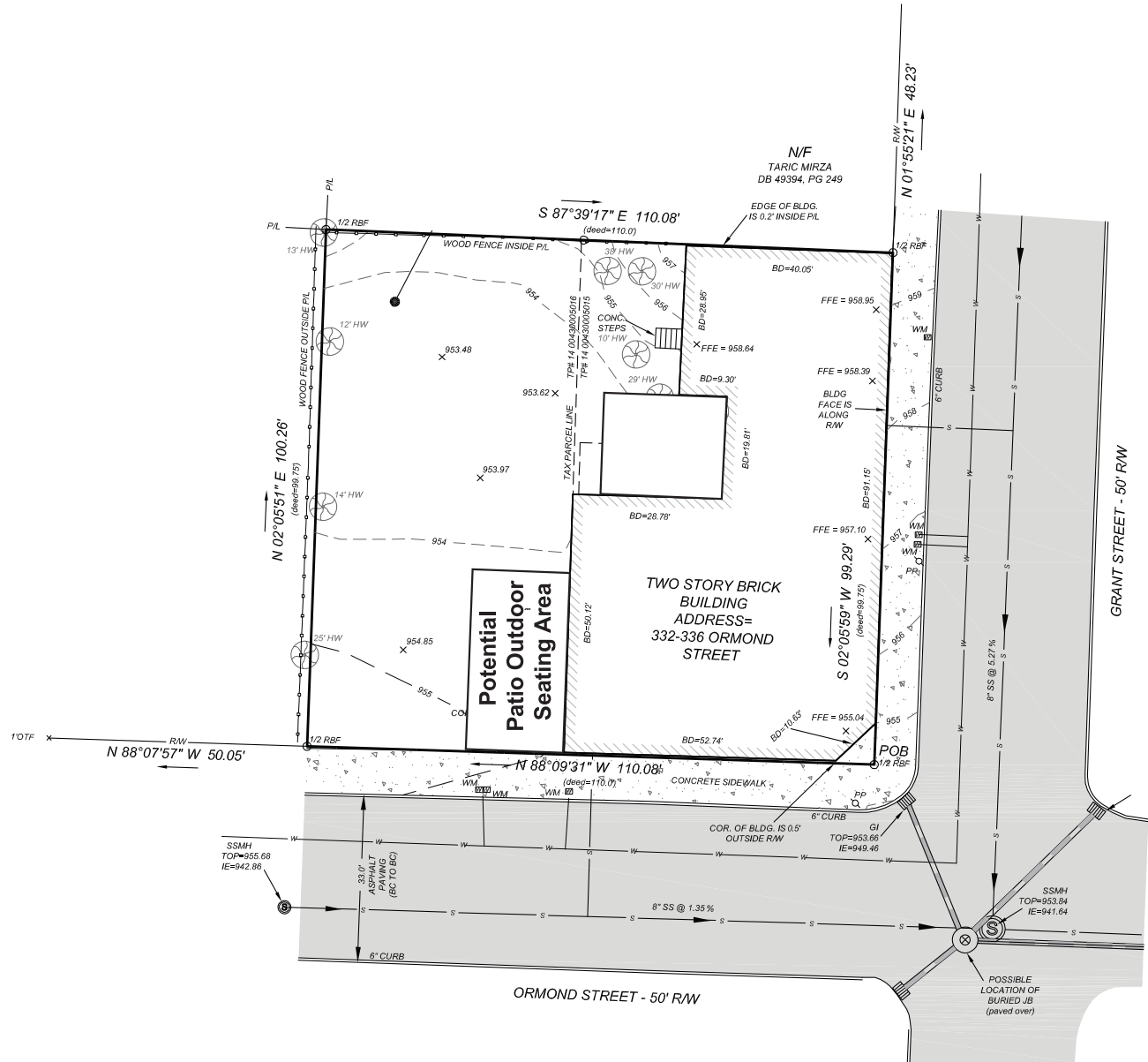
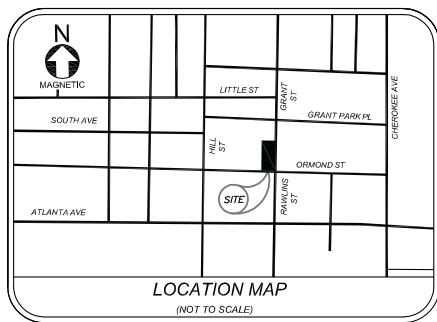
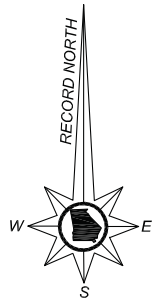
2ND FLOOR



1ST FLOOR



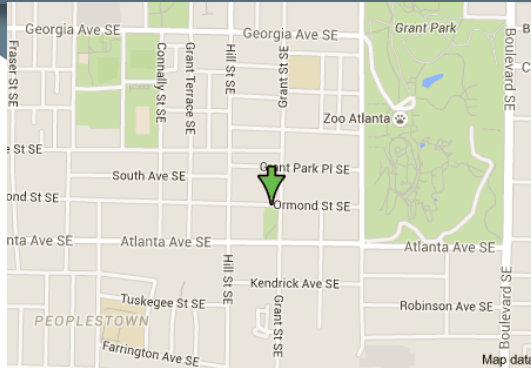
GRANT @ ORMOND SITE PLAN





GRANT @ ORMOND DEMOGRAPHICS

1
MILE



Average Household Income

2014 Average Household Income	\$83,698
2019 Average Household Income	\$96,812
2014-2019 Annual Rate	2.95%

Race and Ethnicity

2014 White Alone	59.7%
2014 Black Alone	33.4%
2014 American Indian/Alaska Native Alone	0.3%
2014 Asian Alone	2.7%
2014 Pacific Islander Alone	0.0%
2014 Other Race	1.0%
2014 Two or More Races	3.0%
2014 Hispanic Origin (Any Race)	4.8%

Households

2000 Households	1,921
2010 Households	2,214
2014 Total Households	2,316
2019 Total Households	2,549

Median Household Income

2014 Median Household Income	\$62,535
2019 Median Household Income	\$79,547
2014-2019 Annual Rate	4.93%

Population

2000 Population	4,450
2010 Population	4,935
2014 Population	5,156
2019 Population	5,630