

Olympia Retail Offering

927 4th Avenue East
Olympia, WA



Standalone retail building with great visibility on 4th Ave

1811 SF on one floor

15+ parking stalls on 12,632 SF of land

Located on high traffic arterial downtown Olympia.

Walking distance to banks, restaurants and other amenities

Price: \$350,000

Location



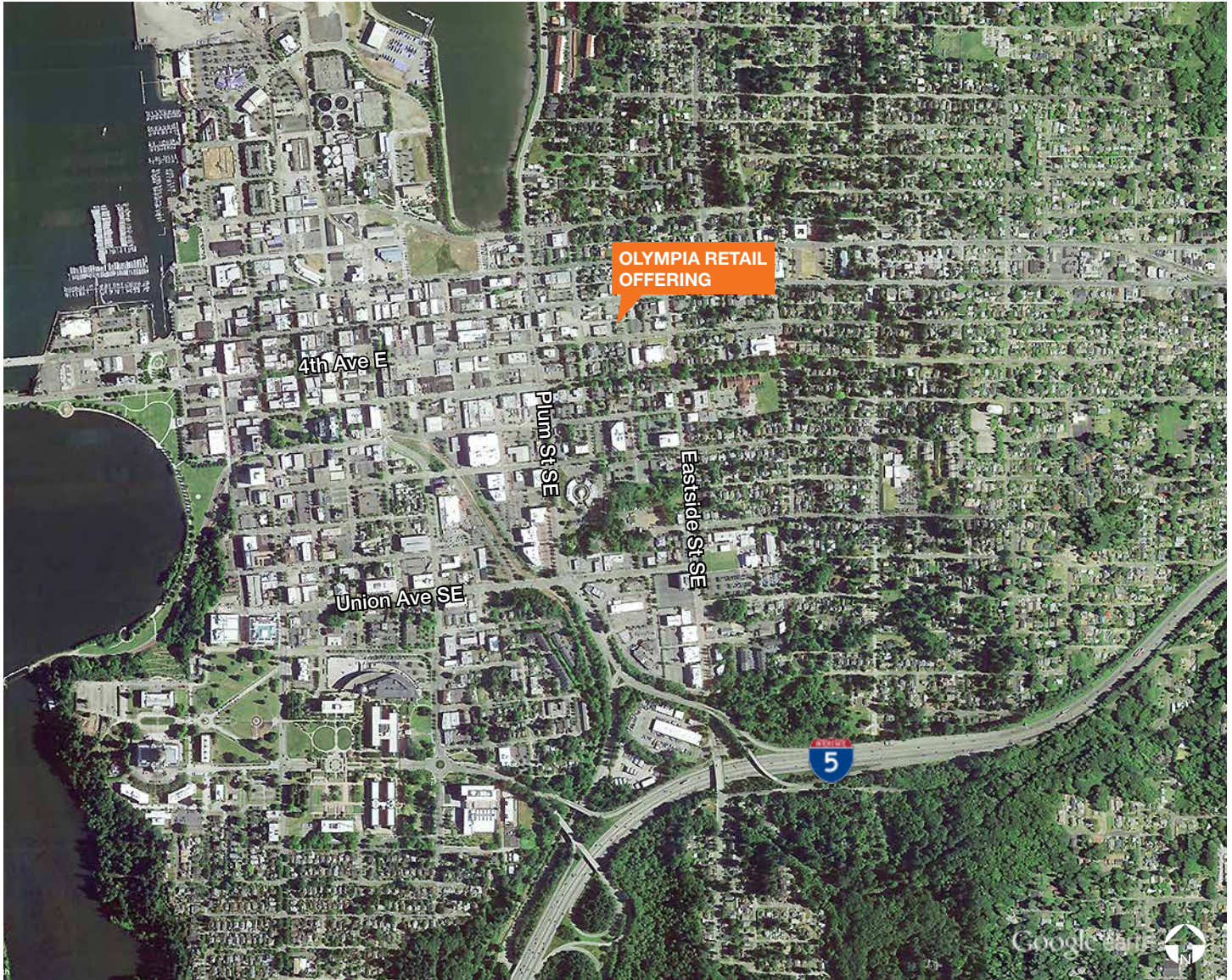
Contact

Evan Parker
360.705.0174
eparker@kiddermathews.com

Jason Rosauer
206.296.9608
jrosauer@kiddermathews.com

Rob Anderson
206.296.9644
roba@kiddermathews.com

Olympia Retail Offering



Contact

Evan Parker
360.705.0174
eparker@kiddermathews.com

Jason Rosauer
206.296.9608
jrosauer@kiddermathews.com

Rob Anderson
206.296.9644
roba@kiddermathews.com