

900 S
SANTA FE
LOS ANGELES
ARTS DISTRICT

SHORT TERM | BUILD TO SUIT | GROUND LEASE

RETAIL
FITNESS
RESTAURANT
CREATIVE OFFICE

PROPOSED SOHO HOUSE



BUILDING INFORMATION

EXISTING

Building 1:	3,170 SF
Building 2:	2,400 SF
Building 3:	2,013 SF
Parking:	10-15 Spaces

REDEVELOPMENT/BUILD TO SUIT

Ground:	12,000 SF
2ND Floor:	6,000 SF
Roof Deck:	6,000 SF
Parking:	36 Spaces

HIGHLIGHTS

- Adjacent to proposed SOHO House
- Close proximity to Ford Factory building (Warner Music’s 250,000 SF new HQ)
- Several flexible scenarios including Traditional Lease, Ground Lease, Build to Suit or Short-Term/Pop-Up

PROPERTY INFORMATION

Current NNN Expenses:	\$20.00 PSF, Per Annum.
Lot Size:	26,290 SF
Zoning:	M3-1-R10



For more information, please contact:

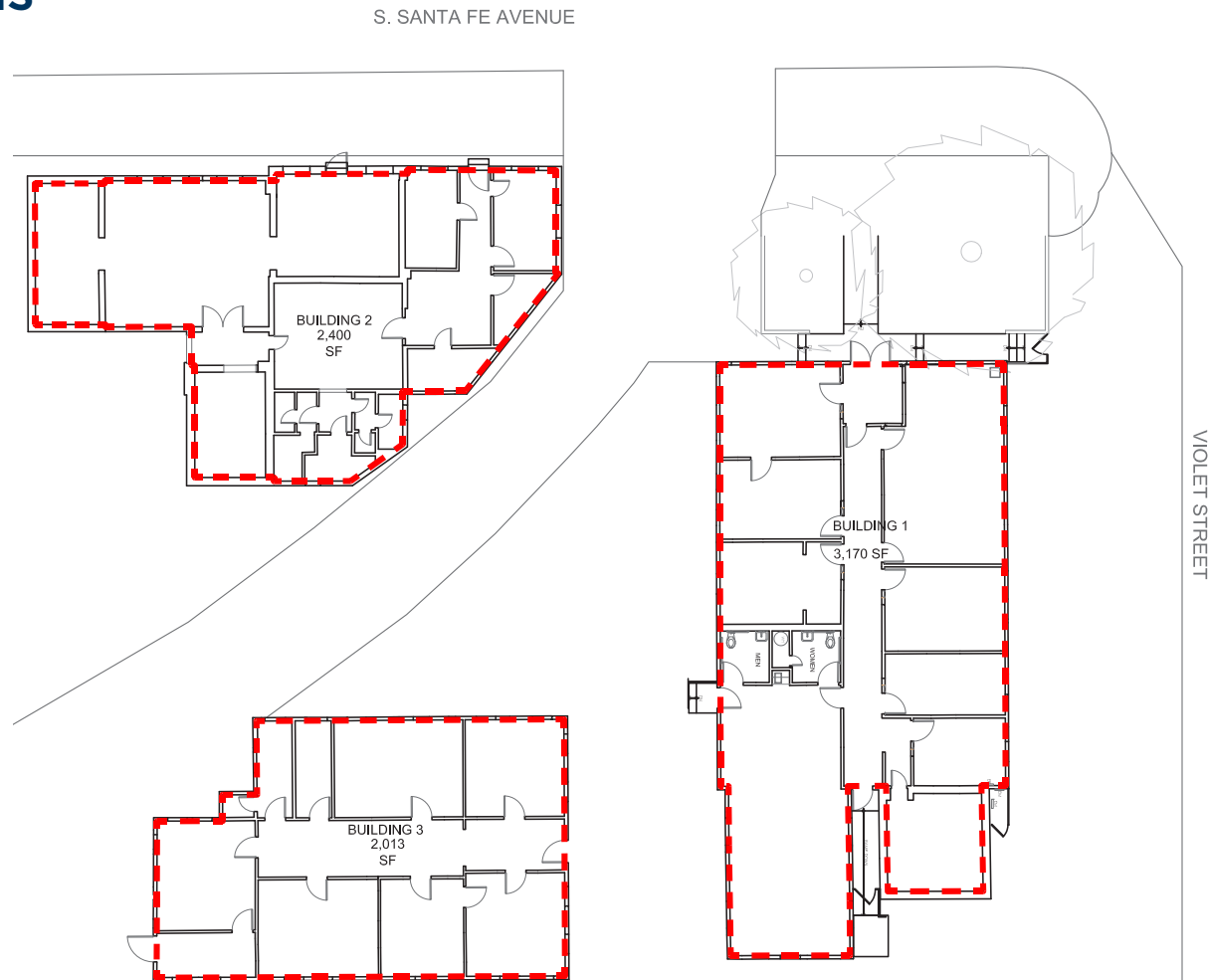
MATTHEW FAINCHEIN
 +1 310 595 2234
 matthew.fainchtein@cushwake.com
 LIC #01503546

CARTER MAGNIN
 +1 310 595 2203
 carter.magnin@cushwake.com
 LIC #01909728



10250 Constellation Blvd, Suite 2200
 Los Angeles, CA 90067
 +1 310 556 1805
 cushmanwakefield.com

EXISTING PLANS



For more information, please contact:

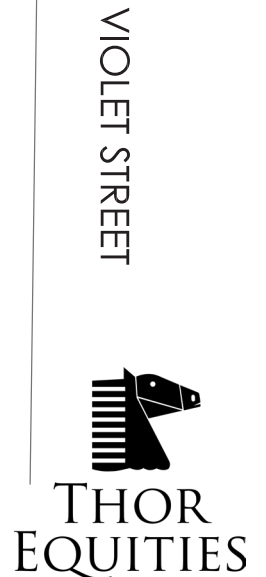
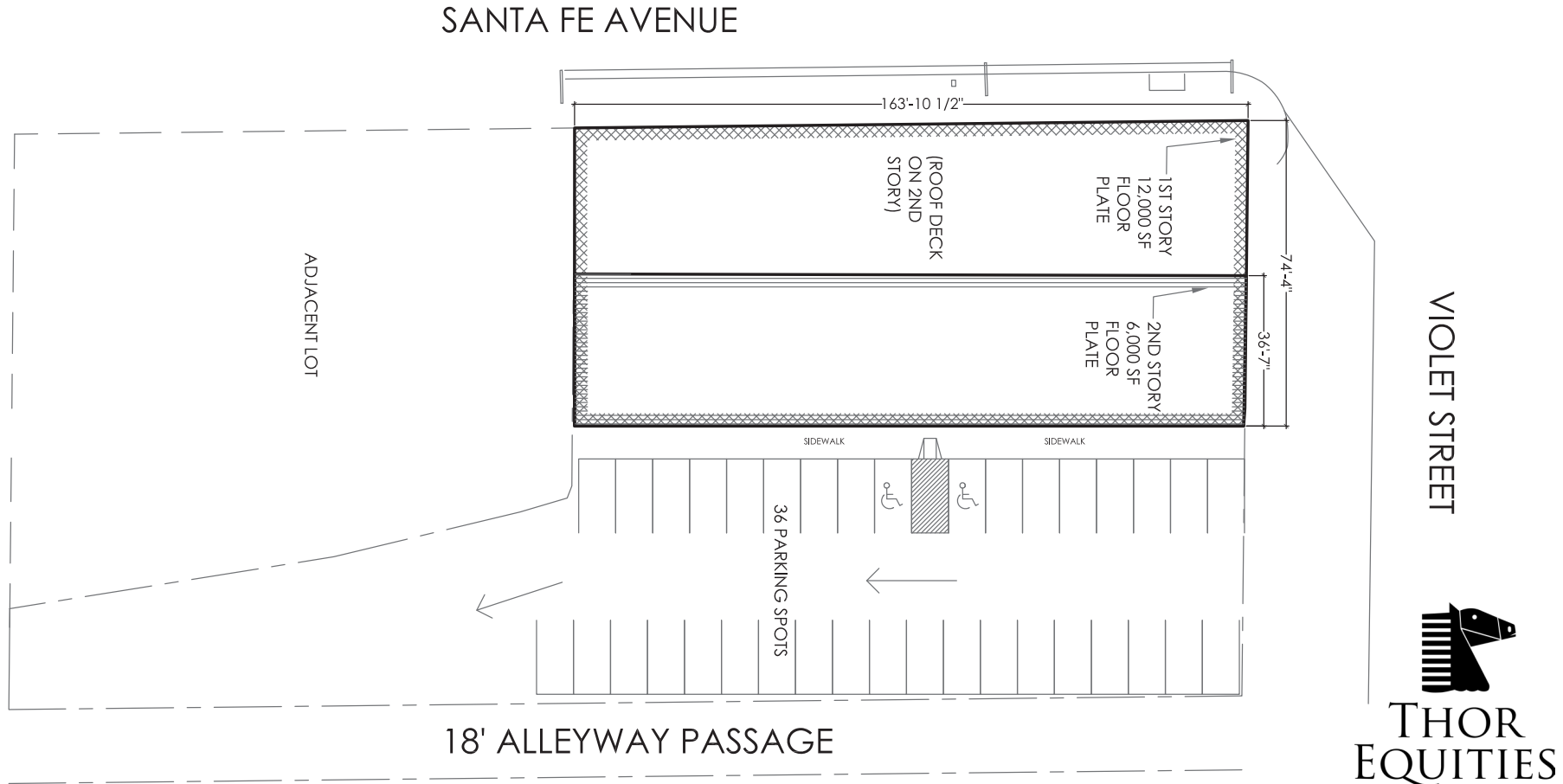
MATTHEW FAINCHEIN
+1 310 595 2234
matthew.fainchtein@cushwake.com
LIC #01503546

CARTER MAGNIN
+1 310 595 2203
carter.magnin@cushwake.com
LIC #01909728



10250 Constellation Blvd, Suite 2200
Los Angeles, CA 90067
+1 310 556 1805
cushmanwakefield.com

REDEVELOPMENT/BUILD TO SUIT PLANS



For more information, please contact:

MATTHEW FAINCHEIN
 +1 310 595 2234
 matthew.fainchtein@cushwake.com
 LIC #01503546

CARTER MAGNIN
 +1 310 595 2203
 carter.magnin@cushwake.com
 LIC #01909728



10250 Constellation Blvd, Suite 2200
 Los Angeles, CA 90067
 +1 310 556 1805
 cushmanwakefield.com

Arts District



RESIDENTIAL

4,291 units

- 1 Savoy Community Association (303 units)
- 2 Artisan on 2nd (118 units)
- 3 Gallery Lofts (33 units)
- 4 Megatoyos Lofts - Lowes Enterprises (320 units) +
- 5 940 East 2nd Street Lofts (38 units)
- 6 Newberry Lofts (50 units)
- 7 One Santa Fe (438 units) +
- 8 Toy Warehouse Lofts (20 units)
- 9 Binford Lofts (36 units)
- 10 811 Traction Avenue Lofts (10 units)
- 11 808-820 East 3rd Street (10 units)
- 12 Legendary Development (472 units) +
- 13 Beacon Lofts (53 units)
- 14 Barker Block (242 units)
- 15 Barker Block Warehouse N°1 (68 units)
- 16 Molino Street Lofts (91 units)
- 17 500 South Santa Fe Avenue +
- 18 Factory Place Arts Complex (143 units)
- 19 SunCal/MSD Capital Development (proposed 1000 units)
- 20 Industrial (240 units) +
- 21 Creative Campus
- 22 Brick Lofts (21 units)
- 23 Toy Factory Lofts (109 units)
- 24 Biscuit Company Lofts (104 units)
- 25 The Walnut (57 units)
- 26 AMP Lofts (180 units)
- 27 2101 East 7th Street (40 units)
- 28 Shorenstein / Ford Factory +
- 29 Loft 726 (22 units)
- 30 Seventh & Bridge (73 units)

RETAIL

- 31 Malin + Goetz +
- 32 Hammer And Spear
- 33 Sci-Arc Art Supply Store
- 34 Guerilla Atelier
- 35 The Artform Studio
- 36 Apolis: Common Gallery
- 37 Poketo
- 38 Alchemy Works
- 39 12345
- 40 Apliiq
- 41 Cerre

CAFE | COFFEE | RESTAURANT

- 42 Chas Germain +
- 43 Civil Coffee
- 44 Cafe Gratitude +
- 45 Van Leeuwen Ice Cream +
- 46 Cerveteca
- 47 Eat.Drink.Americano
- 48 Bourbon Street Supper Club
- 49 Umami Burger
- 50 Zip Fusion Sushi
- 51 The Pie Hole
- 52 Wurstküche
- 53 Blacktop Coffee
- 54 Groundworks
- 55 Urth Caffé
- 56 Bill Chait Restaurant +
- 57 Bill Chait Project +
- 58 Zinc Café & Market
- 59 Blue Bottle Coffee
- 60 The Factory Kitchen
- 61 Officine Brera
- 62 The Springs
- 63 The Daily Dose
- 64 Church & State
- 65 Pizzanista!
- 66 Senor Fish
- 67 Chava's Cafe
- 68 Bread Lounge
- 69 Petty Cash Taqueria
- 70 Bestia
- 71 Stumptown Coffee Roasters
- 72 Mast Brothers Chocolate
- 73 American Tea Room and Vodka Distillery
- 74 Soho House

BAR

- 75 One Eyed Gypsy
- 76 Angel City Brewery
- 77 Eightytwo
- 78 Traction Avenue Brewpub +
- 79 Cedd Moses Craft Beer Garden
- 80 Villains Tavern
- 81 Little Bear
- 82 Pour Haus Wine Bar
- 83 Tony's Saloon

FITNESS | HEALTH

- 84 Archway Yoga
- 85 Trojan Crossfit
- 86 Boulderling Gym
- 87 The Rec Center Crossfit Gym

GROCERY MARKET

- 88 Grow Market +
- 89 Urban Radish Farm Fresh Market
- 90 Joe's Downtown Market

CIVIC | NON PROFIT

- 91 Saslow Dog Park
- 92 Arts District Park +
- 93 Los Angeles River - Alternative 20 +
- 94 Metropolitan High School

ARTS | CULTURE | ENTERTAINMENT

- 95 Cleveland Art
- 96 R&R Gallery Project
- 97 Hauser, Wirth And Schimmel Arts Center +
- 98 District Gallery
- 99 Lili Lakich Studio
- 100 Cornerstone Theater Company
- 101 Art Share LA
- 102 Sci-Arc School Of Architecture
- 103 2Edgy
- 104 La Kretz Innovation Campus +
- 105 Lucky Brand Headquarters
- 106 Lot 613

HOTEL

- 107 Jon Blanchard Hotel

+ Coming Soon