

BEACH COMMERCE PARK

PANAMA CITY BEACH, FLORIDA

LOTS AVAILABLE FOR SALE

Join the fast growing commercial community, which is home to Rental Inc., Sunniland Corporation, UniFirst U1st, Capital City Lumber, Ewing Irrigation, Fastenal and B&C Technologies. The impressively presented park will make an impact on your clientele, and its central location in Panama City Beach provides quick and easy access to the area's major roadways. Beach Commerce Park is the most convenient commercial opportunity for your employees and those business activities that take you on the road.

PREMISES

- Lots ranging from 1-10 ± Acres

PROPERTY FEATURES

- Fully planned park subject to recorded covenants, codes, restrictions and landscaping standards
- Located on U.S. Hwy 98. Approximately 1 mile west of Highway 79 and 40 miles east of Destin
- Build-to-suit and ground lease opportunities are also available
- Numerous commercial uses allowed
- Ideal for distribution/storage, showrooms, general offices and services
- All public utilities are available to each site
- Zoning M-1 (PCB)
- 7 Miles from Hwy 30A

Information deemed reliable, but not guaranteed.

1/13/16 JC



100 Richard Jackson Blvd
Suite 115
Panama City Beach, FL 32407

TEL 850.563.1500
FAX 850.563.1504
grahamcompany.com



EXCLUSIVE AGENTS

Kevin Williams, CCIM
kevinw@grahamcompany.com
850.348.0808

Jason Carnes
jasonc@grahamcompany.com
850.830.9593

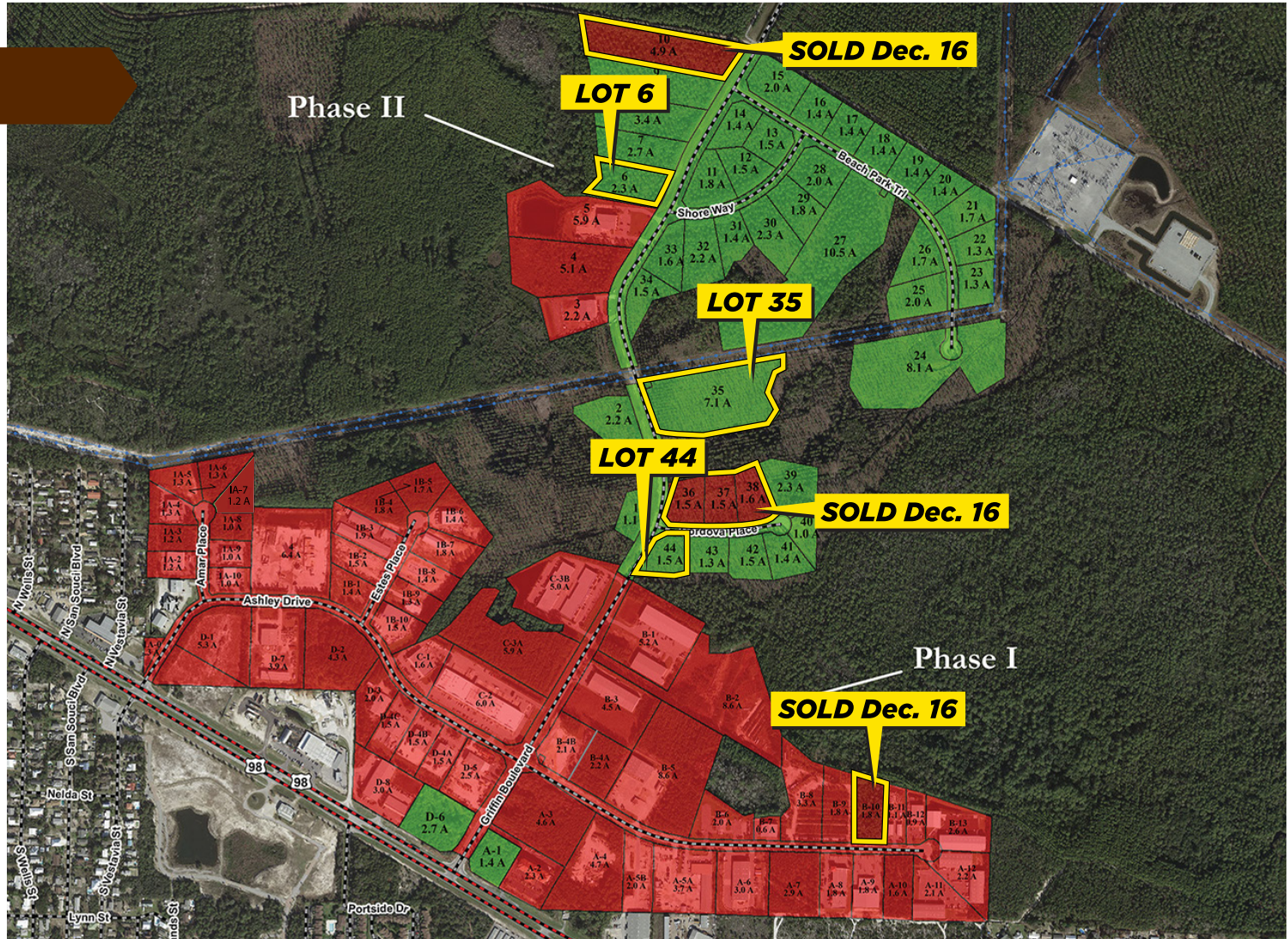
BEACH COMMERCE PARK

PANAMA CITY BEACH, FLORIDA

AVAILABLE LOTS

- Lot 6**
2.3 Acres - \$218,500
- Lot 35**
7.1 Acres - \$677,500
- Lot 44**
1.5 Acres - \$147,500

■ Available ■ Sold



Information deemed reliable, but not guaranteed.



100 Richard Jackson Blvd
Suite 115
Panama City Beach, FL 32407

TEL 850.563.1500
FAX 850.563.1504
grahamcompany.com



EXCLUSIVE AGENTS

Kevin Williams, CCIM
kevinw@grahamcompany.com
850.348.0808

Jason Carnes
jasonc@grahamcompany.com
850.830.9593