

FOR LEASE

PRIME LAKE UNION OFFICE SPACE

FLOOR/AREA: Suite 100 - 6,605 RSF
Suite 200B - 1,949 RSF

POSSESSION: Available April 30, 2013
or earlier upon request

LEASE RATE: Call broker for lease rate

100
NE
NORTHLAKE
WAY SEATTLE, WASHINGTON 98105



FOR MORE INFORMATION CONTACT:

Nick Carkonen

Senior Associate

+1 206 292 6039

nick.carkonen@cbre.com

CBRE

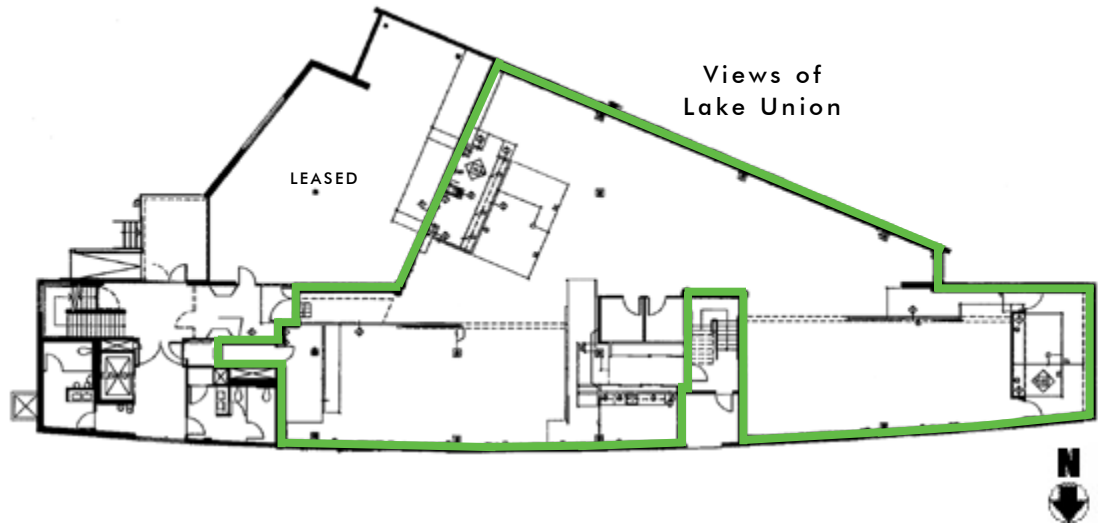
FOR
LEASE

100 NE NORTHLAKE WAY

SEATTLE, WASHINGTON 98105

1ST FLOOR
6,605 RSF

- Excellent views of Lake Union and downtown Seattle
- 15' ceiling height
- 1.9/1,000 RSF parking ratio at \$125/stall/month
- Steps to the Burke-Gilman Trail
- Great access to I-5



FOR MORE
INFORMATION
PLEASE
CONTACT

Nick Carkonen

Senior Associate

+1 206 292 6039

nick.carkonen@cbre.com

CBRE | 1420 Fifth Avenue | Suite 1700 | Seattle, WA 98101 | F 206.292.6033

© 2012 CBRE, Inc. This information has been obtained from sources believed reliable. We have not verified it and make no guarantee, warranty or representation about it. Any projections, opinions, assumptions or estimates used are for example only and do not represent the current or future performance of the property. You and your advisors should conduct a careful, independent investigation of the property to determine to your satisfaction the suitability of the property for your needs. CBRE and the CBRE logo are service marks of CBRE, Inc. and/or its affiliated or related companies in the United States and other countries. All other marks displayed on this document are the property of their respective owners. Photos herein are the property of their respective owners and use of these images without the express written content of the owner is prohibited.

[www.cbre.com/
seattle](http://www.cbre.com/seattle)

CBRE

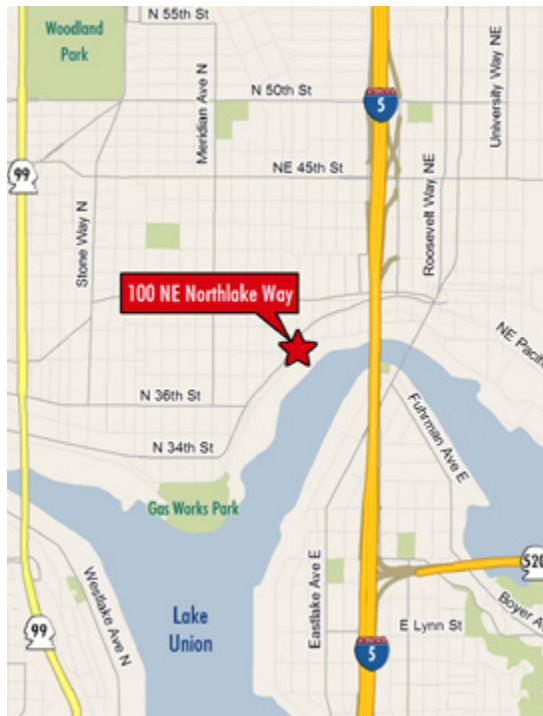
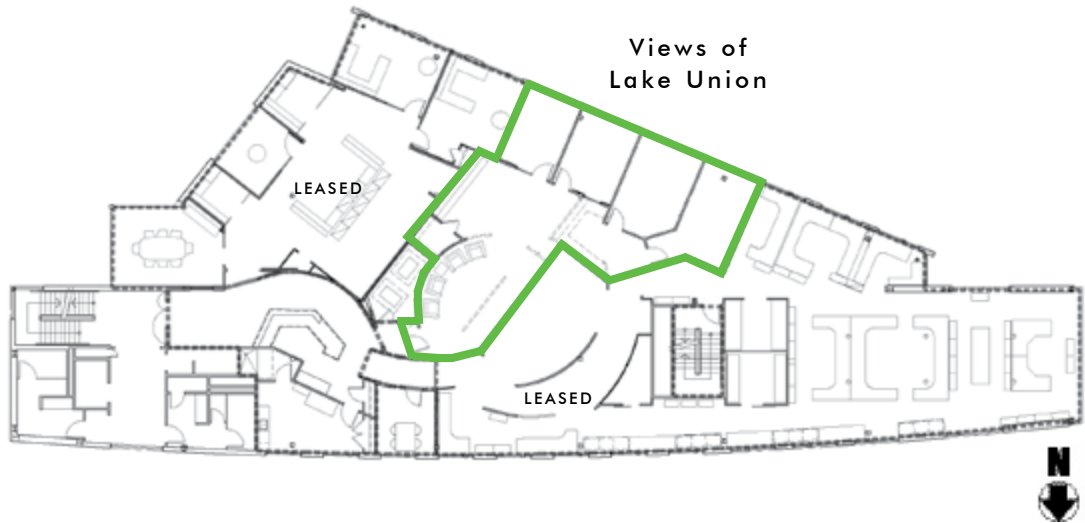
FOR
LEASE

100 NE NORTHLAKE WAY

SEATTLE, WASHINGTON 98105

2ND FLOOR
1,949 RSF

- Shared reception, conference room, showers and break room
- Excellent views of Lake Union and downtown Seattle
- 1.9/1,000 RSF parking ratio at \$125/stall/month
- Steps to the Burke-Gilman Trail



FOR MORE
INFORMATION
PLEASE
CONTACT

Nick Carkonen

Senior Associate

+1 206 292 6039

nick.carkonen@cbre.com

CBRE | 1420 Fifth Avenue | Suite 1700 | Seattle, WA 98101 | F 206.292.6033

© 2012 CBRE, Inc. This information has been obtained from sources believed reliable. We have not verified it and make no guarantee, warranty or representation about it. Any projections, opinions, assumptions or estimates used are for example only and do not represent the current or future performance of the property. You and your advisors should conduct a careful, independent investigation of the property to determine to your satisfaction the suitability of the property for your needs. CBRE and the CBRE logo are service marks of CBRE, Inc. and/or its affiliated or related companies in the United States and other countries. All other marks displayed on this document are the property of their respective owners. Photos herein are the property of their respective owners and use of these images without the express written content of the owner is prohibited. MH 0222513

[www.cbre.com/
seattle](http://www.cbre.com/seattle)

CBRE