

# WALDEN CENTER FOR LEASE

24201 Walden Center Drive, Estero, FL 34134



FOR LEASE



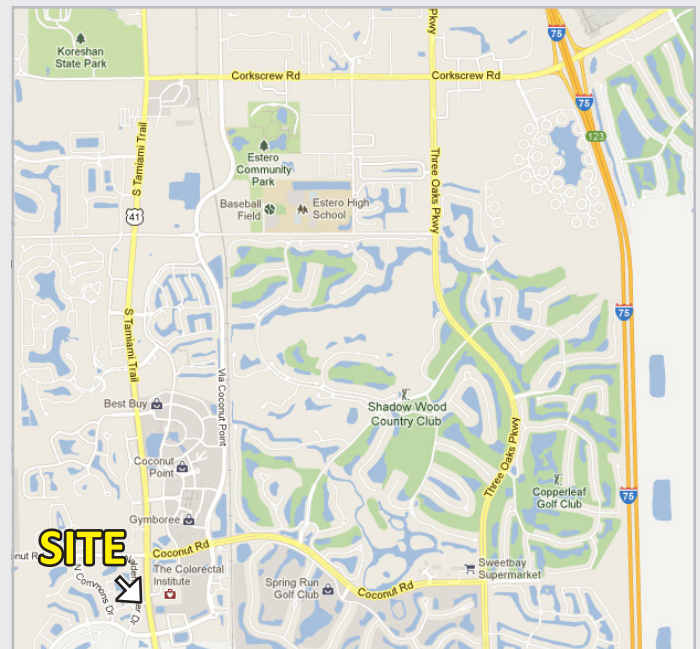
## Property Information

- 3,711 SF former bank space
- Lease rate: \$14 PSF + CAM
- Two adjoining, second floor executive offices, totaling 3,100 SF +/- divisible to 1,500 SF and 1,600 SF offices
- Lease rate: \$12.00 PSF + CAM

## Demographics

	1-Mile	3-Mile	5-Mile
Population	3,078	31,554	82,713
Average HH Income	\$123,099	\$121,592	\$100,184
Households	1,546	15,463	37,883
Employees	5,736	17,176	46,051

(Demographics Now 2013)



## For More Information Contact

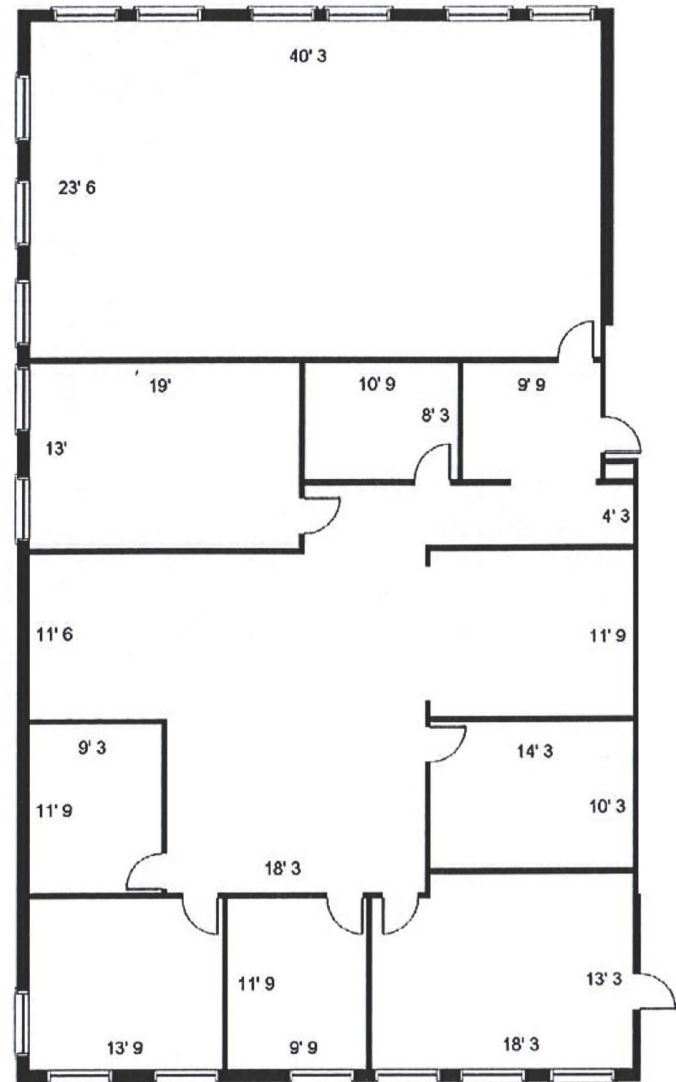
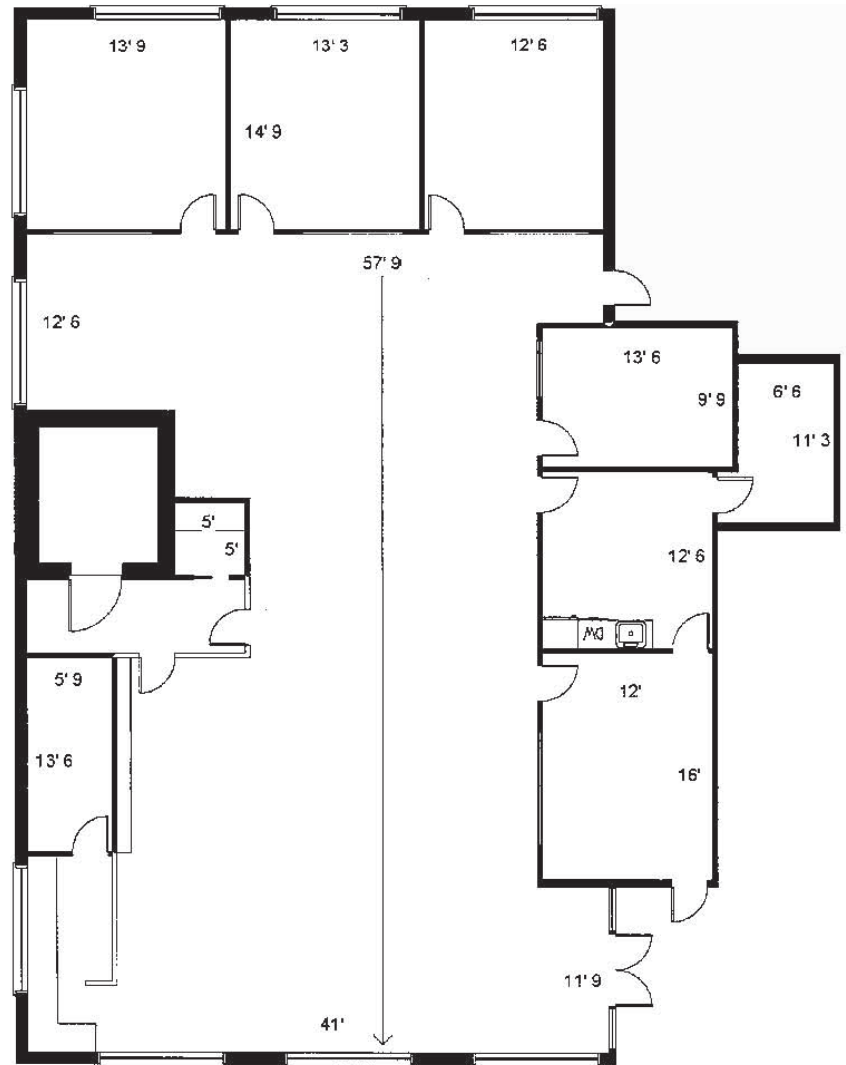
Michael O'Mara  
Investment Properties  
[momara@lqwest.com](mailto:momara@lqwest.com)

Office (239) 333-4368  
Cell (239) 285-0866  
Fax (239) 275-4699



### 3,711 SF Former Bank Space

### 3,100 SF Office Space



1614 Colonial Blvd., Suite 101, Fort Myers, FL 33907

Office: 239.275.4922 | Fax: 239.275.4699 | [www.lqwest.com](http://www.lqwest.com)

Information has been obtained from the owners or from other sources deemed reliable. We have no reason to doubt its accuracy but regret we can not guarantee it. All properties subject to change or withdrawal without notice.