



# 121 VARICK STREET

LOCATED ON THE CORNER OF DOMINICK STREET



Andrianna  
Shamaris

## DETAILS:

Ground Level: **2,400 Square Feet** | Lower Level: **1,760 Square Feet**

Wraparound Frontage: **100' (55' on Varick, 45' on Dominick)** | Ceiling Height: **18'**

Term: **Negotiable** | Possession: **Immediate** | Asking Rent: **Please Inquire**

*Logical Divisions Considered*

# 121 VARICK STREET

## SPACE FEATURES:

- Situated at the epicenter of Hudson Square, the increasingly 24/7 neighborhood that has seen an explosion of new developments including:
  - Disney's** future 1.2 million SF headquarters (1 block away)
  - Google's** recently announced \$1 billion Hudson Square campus totaling 1.7 million SF
  - Over 950 new luxury residential condos and apartments developed by **Related, Toll Brothers, Cape Advisors, Bizzi & Partners, and Jeff Greene**
  - A new 19,000 SF **Trader Joe's** and a 10,000 SF **CVS**
- Recently restored facade with expansive double-height corner windows spanning 100 horizontal feet
- Terrific signage and brand exposure opportunity with over 25,000+ vehicles passing by daily

# HUDSON SQUARE



Google



The Walt Disney Company

WALT DISNEY  
HEADQUARTERS

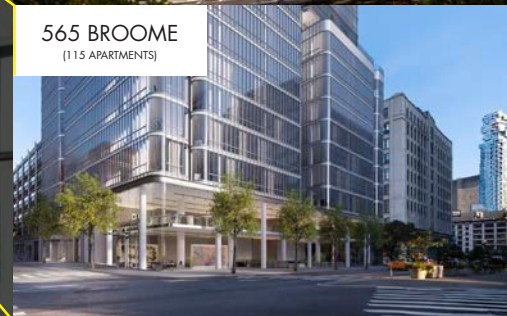
THE DOMINICK  
(391 ROOM HOTEL)



570 BROOME  
(54 APARTMENTS)



565 BROOME  
(115 APARTMENTS)



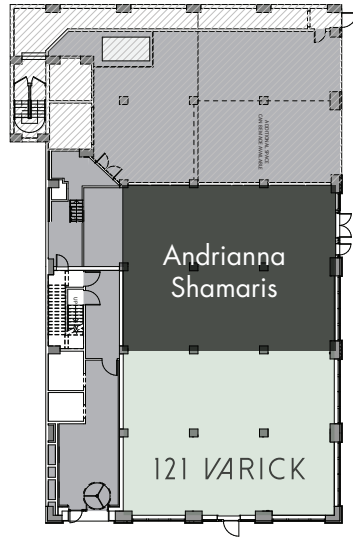
111 VARICK  
(100 APARTMENTS)



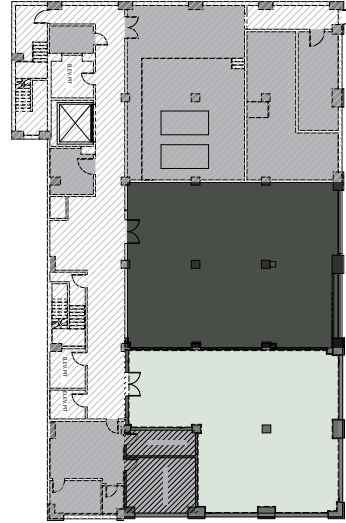
## NEIGHBORS INCLUDE:

- The Dominick Hotel
- Trader Joe's
- Starbucks
- CVS (soon)
- Ducati
- Aveda Salon
- Whitman's NYC
- Arlo Hotel
- Chillhouse
- Google
- Disney HQ (soon)
- La Colombe
- Andrianna Shamaris
- Sherwin Williams
- Dainese
- Vespa
- Aquagrill
- Shake Shack

Ground Level



Lower Level

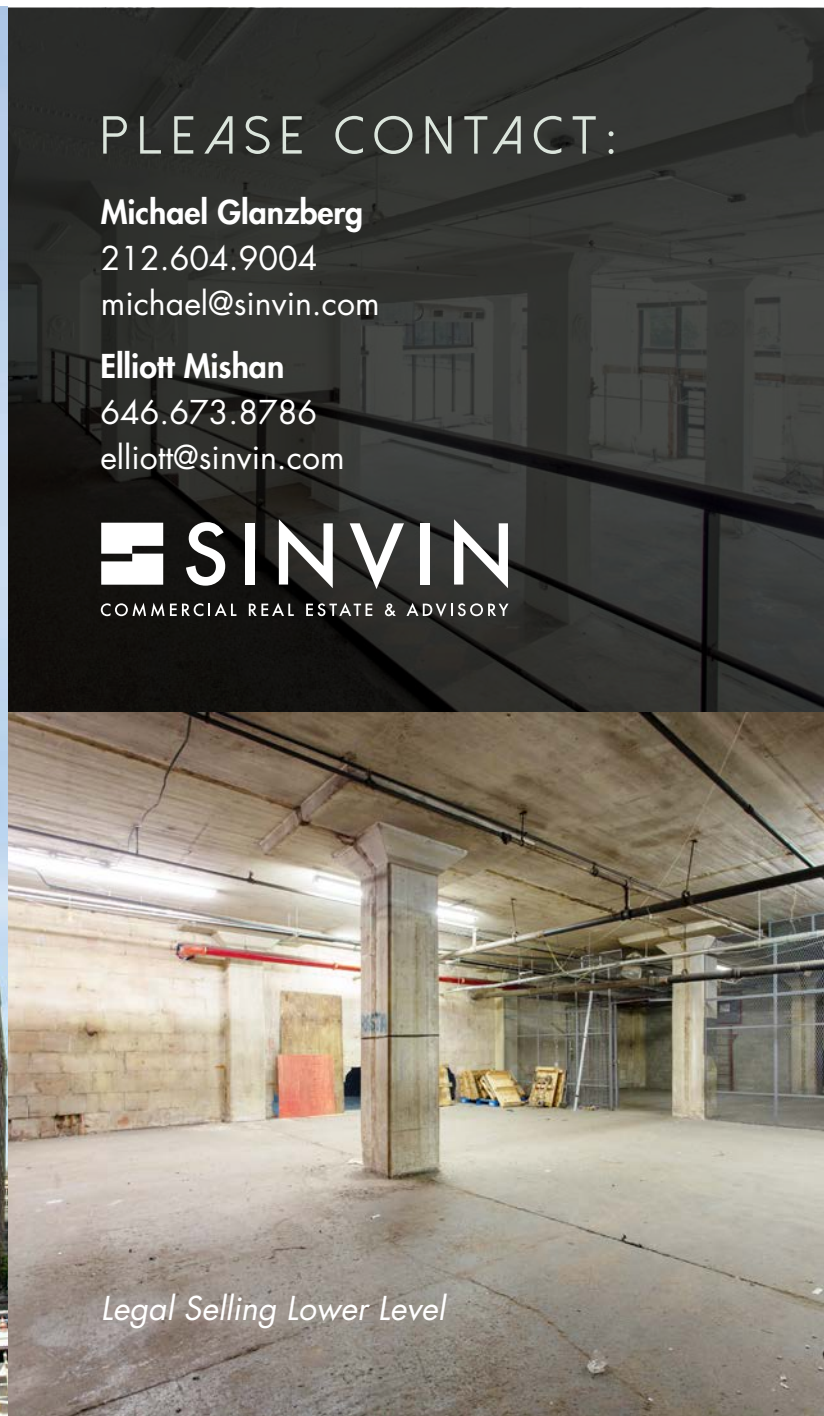


PLEASE CONTACT:

**Michael Glanzberg**  
212.604.9004  
michael@sinvin.com

**Elliott Mishan**  
646.673.8786  
elliott@sinvin.com

**SINVIN**  
COMMERCIAL REAL ESTATE & ADVISORY



*Legal Selling Lower Level*