

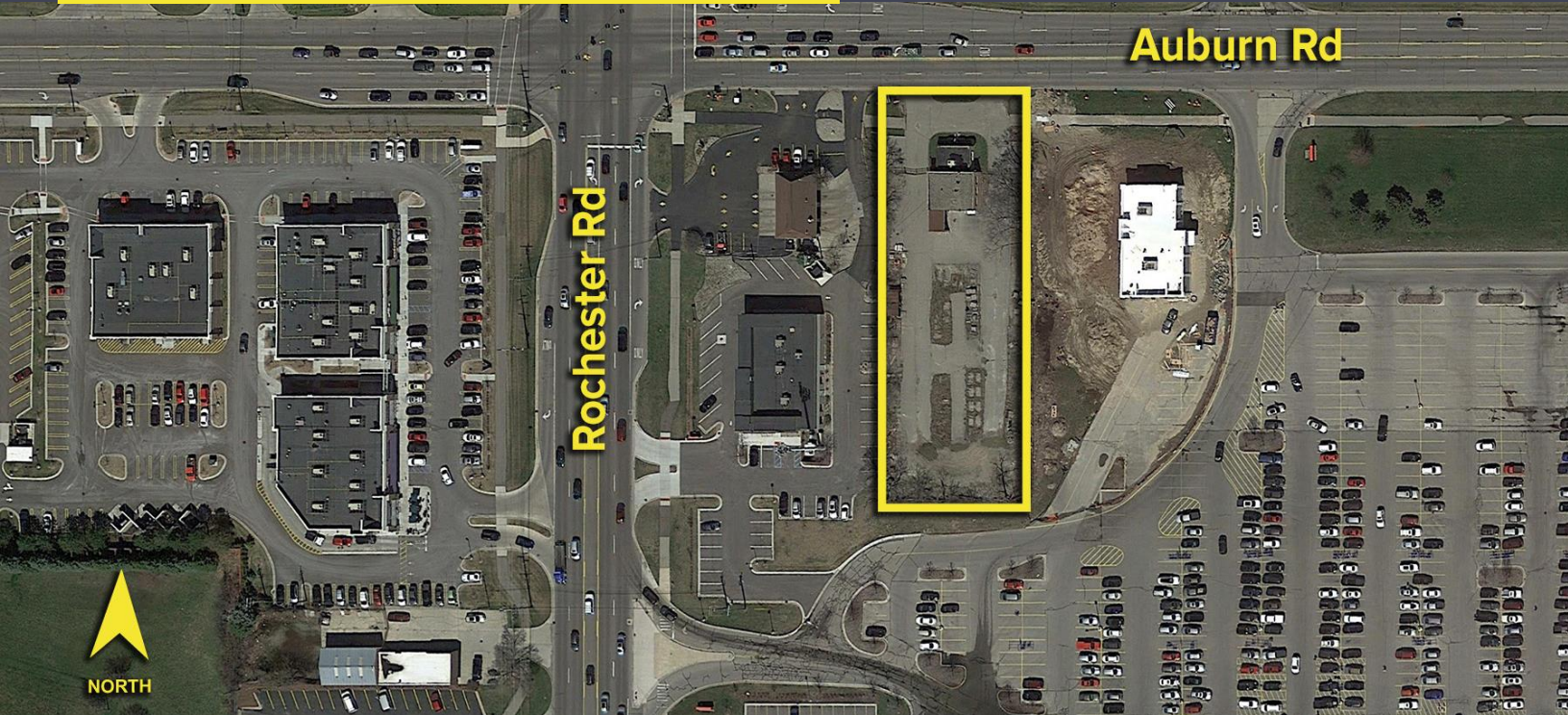
10 E. AUBURN ROAD
ROCHESTER, MICHIGAN

RETAIL FOR LEASE
2,000-9,600 Square Feet Available



**SIGNATURE
ASSOCIATES**
KNOW SIGNATURE | KNOW RESULTS

EXCITING OPPORTUNITY



PROPERTY FEATURES

- Build-to-suit possible with drive-thru
- 2,000 minimum available square feet
- 9,600 maximum available square feet
- Zoned B1
- Abundant Parking
- Lease Rate: \$6,250/month Ground Lease

Comments: Opportunity to ground lease \$75,000/year or owner will build to suit. Many options possible with potential drive-thru directly in front of Meijer with access throughout. One of the best retail corners in Oakland County.



For more information, please contact:

PETER VANDERKAAY

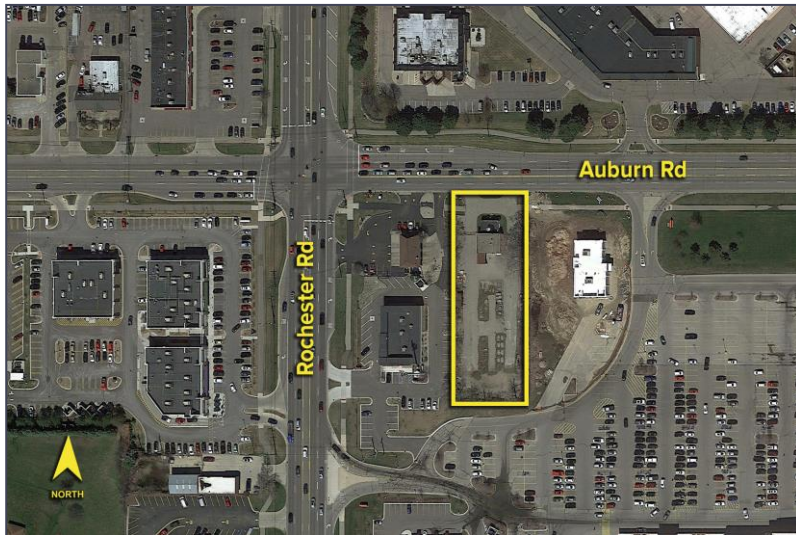
(248) 359 3837

pvanderkaay@signatureassociates.com

10 E. Auburn Road – Rochester, Michigan

Retail For Lease

2,000-9,600
Square Feet
AVAILABLE



DEMOGRAPHICS

	POPULATION	MED. HH INCOME
1 MILE	8,659	\$94,662
3 MILE	68,777	\$96,541
5 MILE	199,662	\$100,126

TRAFFIC COUNTS (TWO-WAY)

14,826	Auburn Rd. W. of Rochester Rd. 2-Way
17,861	Auburn Rd. E. of Rochester Rd. 2-Way
36,815	Rochester Rd. N. of Auburn Rd. 2-Way
46,283	Rochester Rd. S. of Auburn Rd. 2-Way



For more information, please contact:

PETER VANDERKAAY

(248) 359 3837

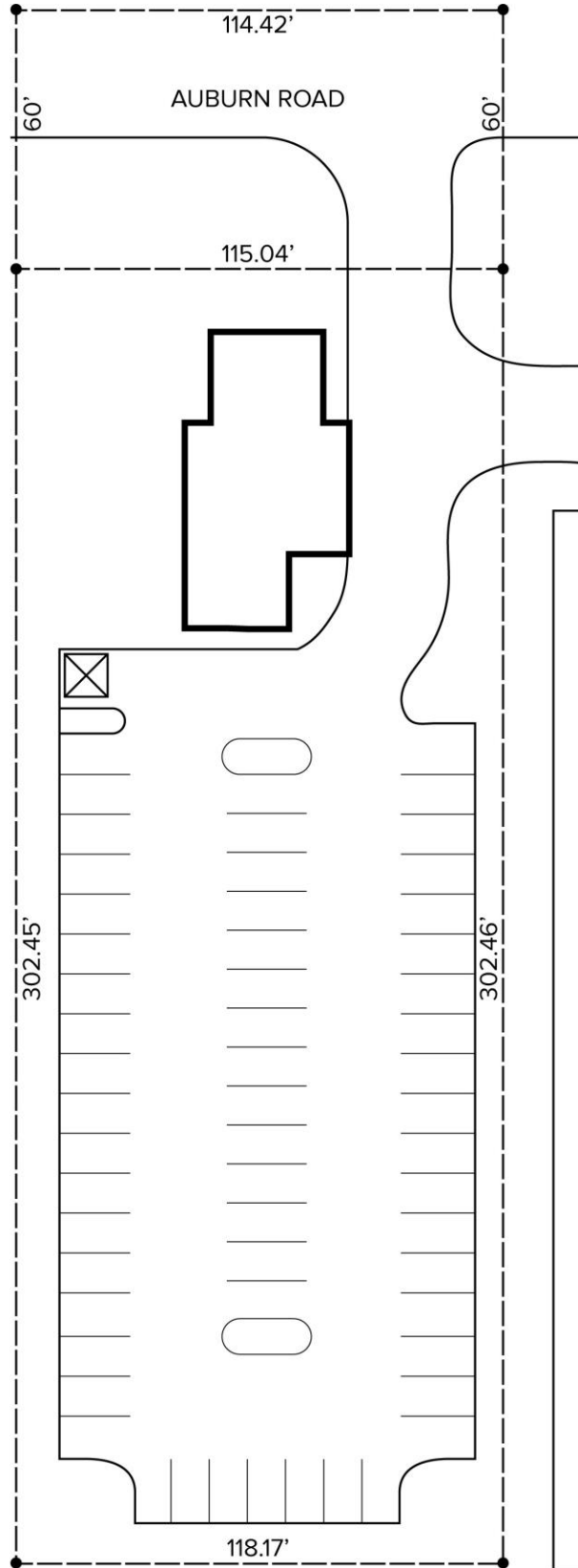
pvanderkaay@signatureassociates.com

10 E. Auburn Road – Rochester, Michigan

Retail For Lease

2,000-9,600
Square Feet
AVAILABLE

Site Plan



For more information, please contact:

PETER VANDERKAAY

(248) 359 3837

pvanderkaay@signatureassociates.com