

OFFICE SPACE AVAILABLE

Winter Park Village, Winter Park, Florida



Winter Park Village offers the market's most powerful collection of high-end retailers and restaurants, all in a beautiful, inviting "main street" setting that includes residential and office uses.

LOCATION

North of Orlando on US-17/92, just South of Lee Road in Winter Park.

PROPERTY DETAILS

Lease Rate: \$23/SF MG

Rentable Space:

B140 3,353 SF 1st Floor

N400 2,296 SF 1st Floor

G220 2,818 SF 2nd Floor

PROPERTY HIGHLIGHTS

- Convenient location, close to major roads and the interstate
- Close proximity to shopping and restaurants
- On-site management
- Abundant parking



CASTO

Inspired ideas.
Integrated real estate solutions.

www.castoinfo.com | 5391 Lakewood Ranch Blvd., Suite 100 | Sarasota, FL

LEASING REPRESENTATIVE

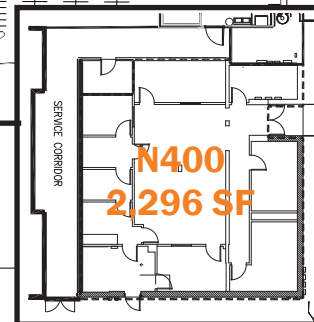
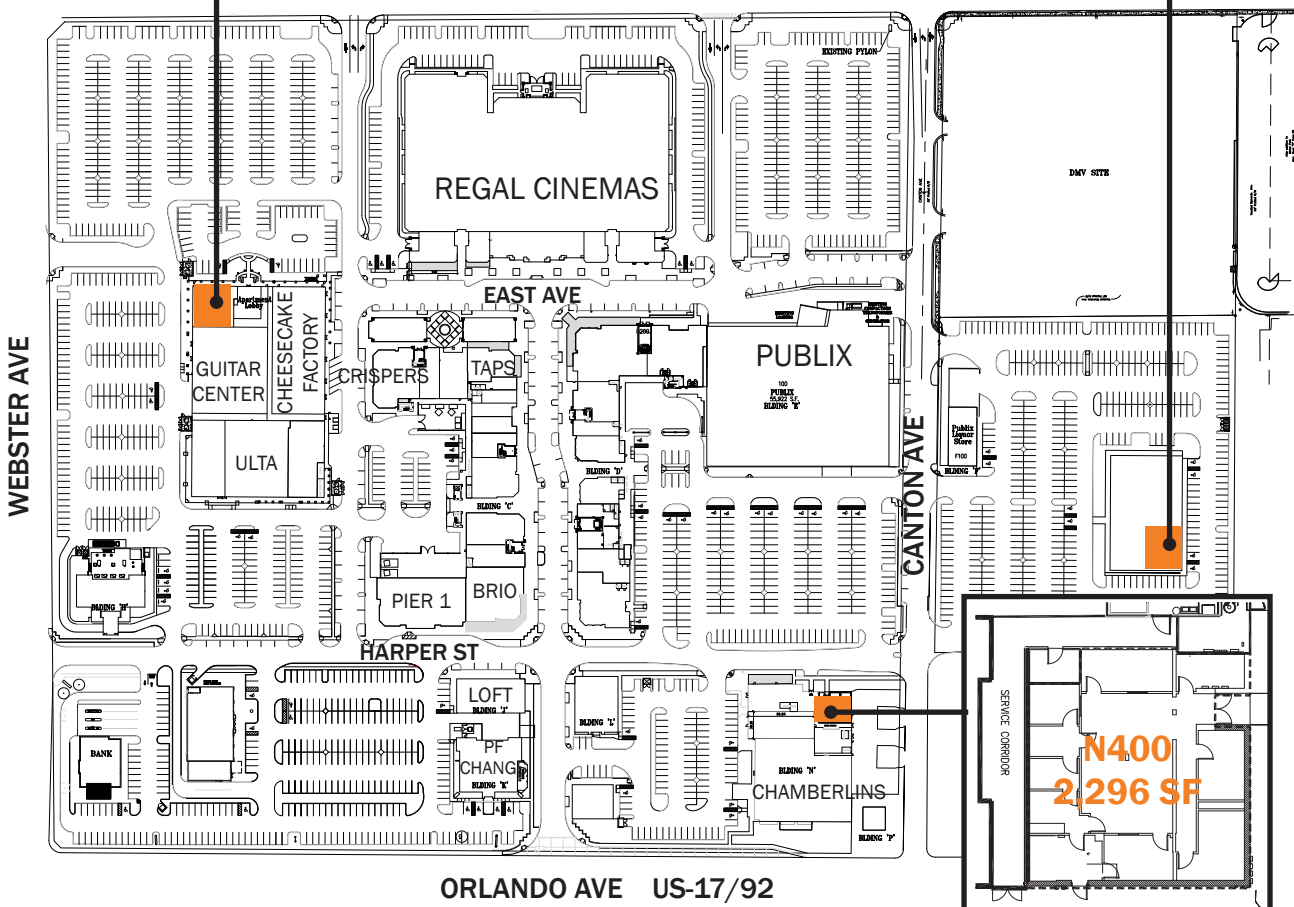
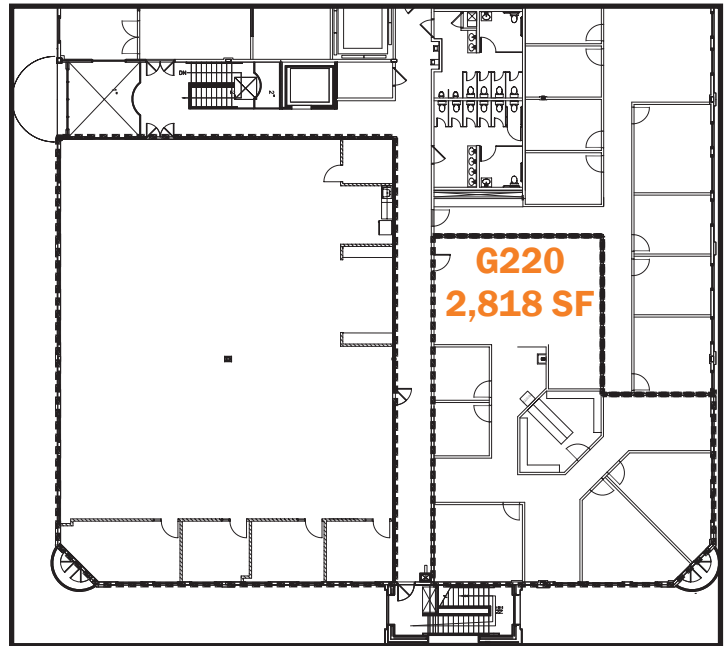
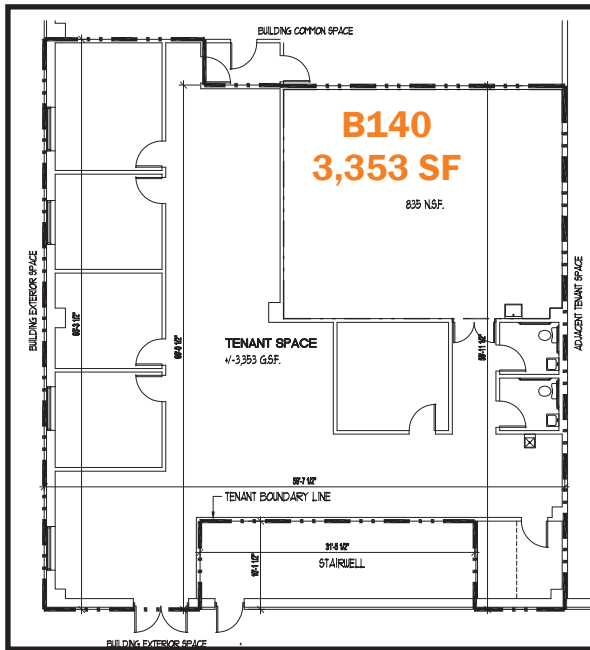
George Brusco

GBrusco@castoinfo.com | 941.552.2705

www.castoinfo.com/winterparkvillage

OFFICE SPACE AVAILABLE

Winter Park Village, Winter Park, Florida



Inspired ideas.
Integrated real estate solutions.

www.castoinfo.com | 5391 Lakewood Ranch Blvd., Suite 100 | Sarasota, FL

LEASING REPRESENTATIVE

George Brusco

GBrusco@castoinfo.com | 941.552.2705

www.castoinfo.com/winterparkvillage