

FOR SALE

# ±14.88 Acres of Commercial Land

RETAIL



## PROPERTY INFO

- + Site serves the local communities of Show Low and Pinetop-Lakeside
- + Excellent exposure and visibility along White Mountain Road with ±1,100 feet of frontage
- + Commercial C-2 zoning allows for multiple uses
- + All utilities to the site
- + Located across from Park Pineway Shopping Center and within a mile of Summit Healthcare Regional Medical Center, Super-Walmart, Lowes, & Home Depot
- + Scenic attractions in the trade such as Mount Baldy, the Coronado Trail, the Little Colorado basin, & The Sunrise Ski Resort spark strong tourism

## DEMOGRAPHICS

	5 miles	10 miles	20 miles
2018 Population	17,498	28,701	42,113
2018 Households	7,102	11,632	16,432
Average HH Income	\$56,984	\$59,500	\$59,711
2018 Businesses	967	1,453	1,714

SOURCE: ESRI 2018



SITE OUTLINE OVERLAY NOT TO SCALE



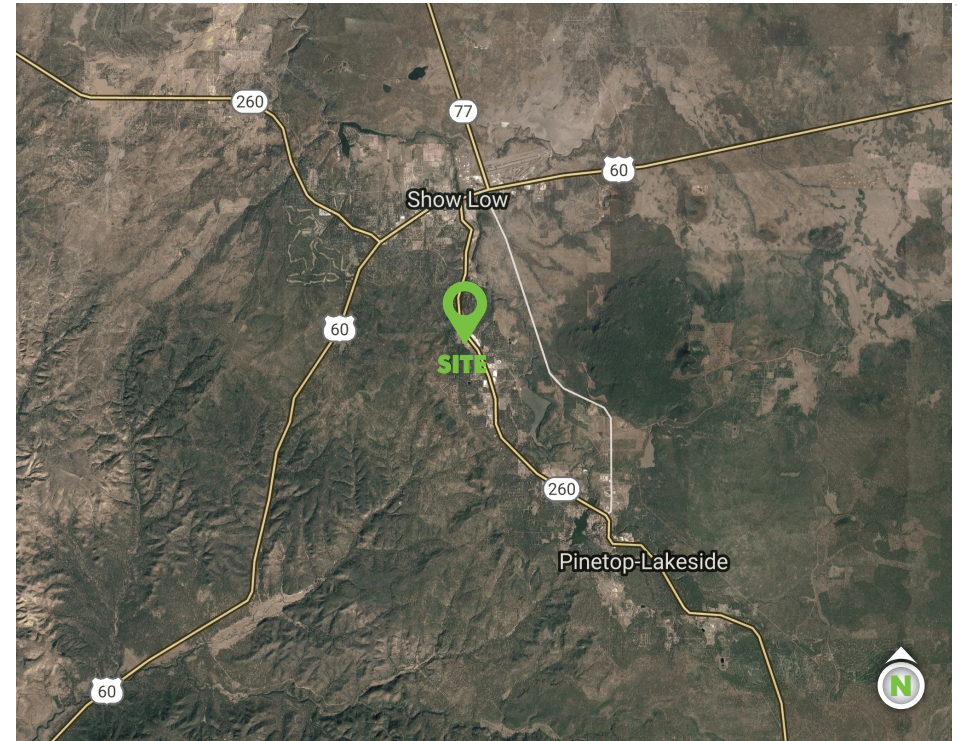
FOR SALE

# ±14.88 Acres of Commercial Land

RETAIL



\*AADT 2017; SITE OUTLINE OVERLAY NOT TO TO SCALE



## CONTACT US

### Todd Folger

First Vice President  
+1 602 735 1749  
todd.folger@cbre.com

### Jami Savage-Gray

Senior Vice President  
+1 602 735 1918  
jami.gray@cbre.com

### Kristin Watson

Client Services Specialist  
+1 602 735 1715  
kristin.watson@cbre.com

© 2019 CBRE, Inc. All rights reserved. This information has been obtained from sources believed reliable, but has not been verified for accuracy or completeness. You should conduct a careful, independent investigation of the property and verify all information. Any reliance on this information is solely at your own risk. CBRE and the CBRE logo are service marks of CBRE, Inc. All other marks displayed on this document are the property of their respective owners. Photos herein are the property of their respective owners. Use of these images without the express written consent of the owner is prohibited.

4178 S. WHITE MOUNTAIN RD, SHOWLOW, AZ 85929

[www.cbre.us](http://www.cbre.us)

**CBRE**