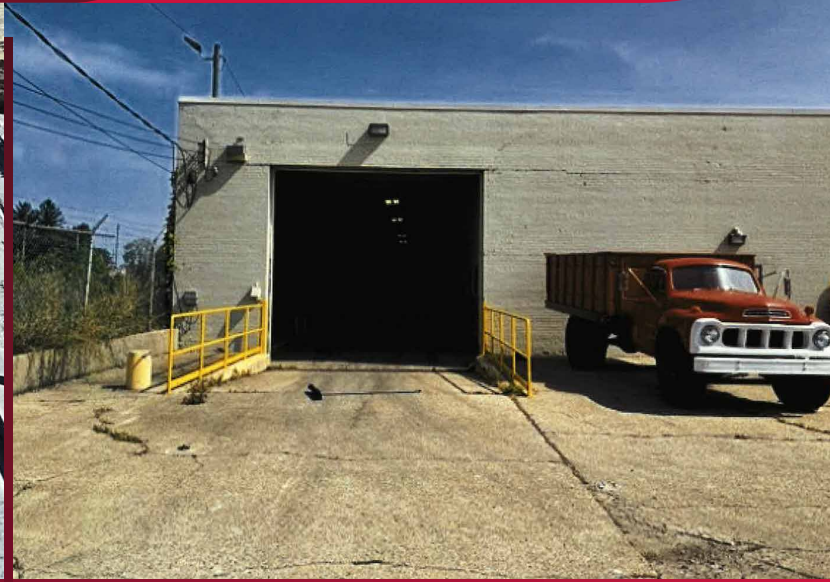
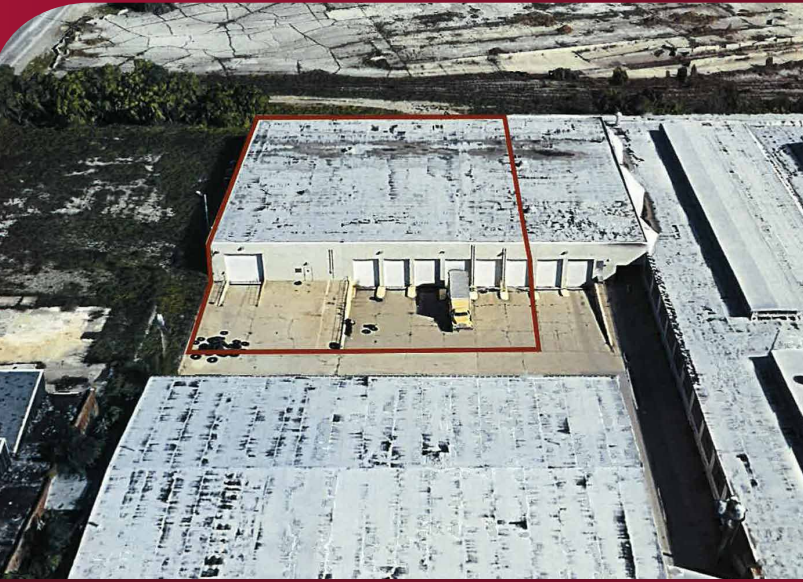


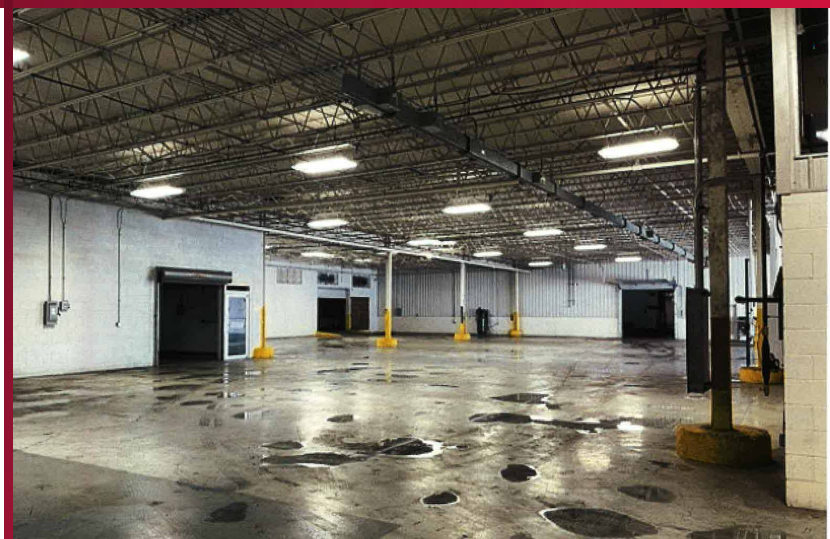
FOR LEASE OFFICE WAREHOUSE

1428 W. HENRY STREET | INDIANAPOLIS, IN 46221



LISTING DETAILS

- Suite D
- 19,424 SF
- 2,000 SF Offices
- 15' Clear
- 6 Docks
- (1) 12'x14' DI Door
- Heavy Power
- Short Term Considered
- I-4 Zoned
- IEDC Certified: Urban AG, Microgreen Indoor Green
- Adjacent to Elanco to be Corporate HQ
- \$7.75 SF Net, OPEX \$1.35 SF



FOR MORE INFORMATION Bill Brennan | D 317.218.1040 | bbrennan@lee-associates.com
Dan Root | D 317.218.8001 | droot@lee-associates.com

All information furnished regarding property for sale, rental or financing is from sources deemed reliable, but no warranty or representation is made to the accuracy thereof and same is submitted to errors, omissions, change of price, rental or other conditions prior to sale, lease or financing or withdrawal without notice. No liability of any kind is to be imposed on the broker herein.