

2163 COLE STREET
BIRMINGHAM, MICHIGAN

AERES

SIGNATURE
ASSOCIATES

RETAIL/OFFICE FOR SUBLEASE
2,742 Square Feet Available

GREAT SPACE!



PROPERTY FEATURES

- 2,742 available square feet
- Zoned Mixed Use
- Gorgeous showroom space in the heart of the rail district
- This space will benefit from the high-end clientele of the finest furniture store in the state!
- Main entrance off the rear of the building next to Color Box
- Lease Rate: \$4,750/month



For more information, please contact:

ANGELA THOMAS
(248) 359 3838
athomas@signatureassociates.com

ERICA DUNLAP
(248) 359 3808
edunlap@signatureassociates.com

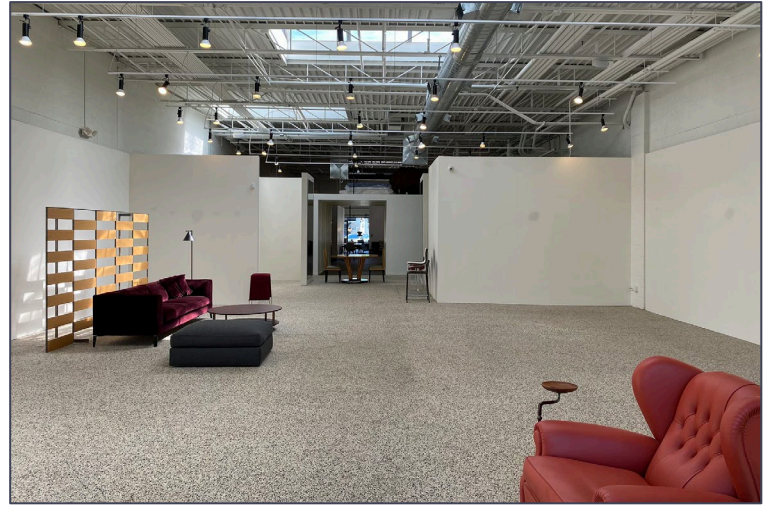
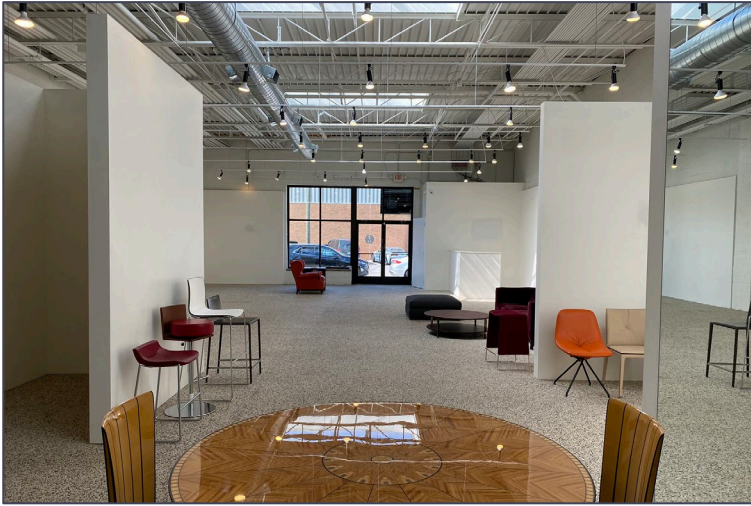
NICOLE VOISARD
(248) 799 3159
nvoisard@signatureassociates.com

2163 COLE STREET - BIRMINGHAM, MICHIGAN

Retail/Office For Sublease

2,742
Square Feet
AVAILABLE

Interior Photos



For more information, please contact:

ANGELA THOMAS
(248) 359 3838

ERICA DUNLAP
(248) 359 3808

NICOLE VOISARD
(248) 799 3159

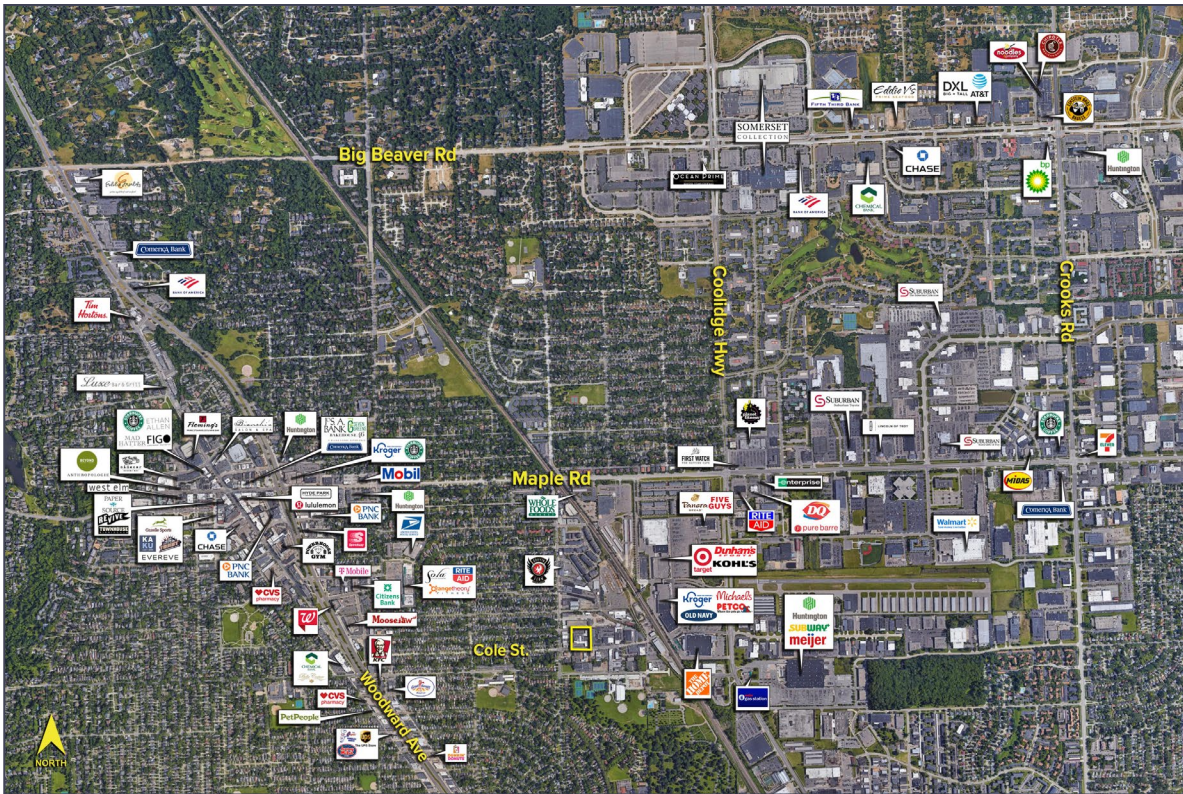
SIGNATURE ASSOCIATES
One Towne Square, Suite 1200
Southfield, MI 48076
www.signatureassociates.com

2163 COLE STREET - BIRMINGHAM, MICHIGAN

2,742
Square Feet
AVAILABLE

Retail/Office For Sublease

Aerial
Views



For more information, please contact:

ANGELA THOMAS
(248) 359 3838

ERICA DUNLAP
(248) 359 3808

NICOLE VOISARD
(248) 799 3159

SIGNATURE ASSOCIATES
One Towne Square, Suite 1200
Southfield, MI 48076
www.signatureassociates.com

SNAPSHOT OF BIRMINGHAM

AERES

SIGNATURE
ASSOCIATES



The City of Birmingham is an energetic hub for all things “Live, Shop, Play” and is known as one of the nation’s most affluent suburbs. Birmingham has a thriving pedestrian friendly retail shopping district with a historic downtown dating back to the 1830s. The downtown area is comprised of approximately 300 retail and service businesses with everything your heart desires.

TRADE AREA/STATS (2019 ESTIMATES)

TOTAL POPULATION	225,802
TOTAL HOUSEHOLDS	100,119
% FEMALE	51.7%
% MALE	48.3%
MEDIAN AGE	42.3
TOTAL HOUSEHOLD EXPENDITURE	\$8.51 billion
AVERAGE HOUSEHOLD INCOME	\$188,140
AVERAGE HOME PRICE	\$390,975

BIRMINGHAM FACTS & FIGURES

- Home to notable retailers and restaurants such as Hastens, Johnny Was, Lululemon, Anthropologie, West Elm, Starbucks Reserve, Paper Source, Hyde Park, & Flemings
- Surrounded by Michigan’s wealthiest zip codes, including Bloomfield Hills, Bloomfield Twp., Franklin/Bingham Farms, and West Bloomfield
- Named one of the “Top 20 Walkable Towns in America” according to an independent audit of more than 600 communities throughout the United States
- There are 5 municipal parking decks that offer 2 hours free, plus metered parking along the main thoroughfares
- CNN Money named Birmingham among Top 10 6-figure towns

For more information, please contact:

ANGELA THOMAS
(248) 359 3838
athomas@signatureassociates.com

ERICA DUNLAP
(248) 359 3808
edunlap@signatureassociates.com

NICOLE VOISARD
(248) 799 3159
nvoisard@signatureassociates.com