

ONE FRANKLIN SQUARE

📍 1301 K STREET NW
WASHINGTON DC 20005

🏢 CENTRAL BUSINESS DISTRICT

🛒 1,266 TOTAL RETAIL SF

PRIME DOWNTOWN RETAIL SPACE AT WASHINGTON POST HEADQUARTERS



DELIVERY: Immediate

SPACE AVAILABLE

1,266 SF

DETAILS

- Adjacent to The Washington Post headquarter lobby.
- Join nearby retailers and businesses:

The Washington Post



DEMOGRAPHIC SNAPSHOT



POPULATION
1/4 mi — 4,664
1/2 mi — 16,713



EMPLOYEES
1/4 mi — 1,971
1/2 mi — 5,866



MEDIAN HHI
1/4 mi — \$82,005
\$97,015



WALK SCORE
(97) Walker's Paradise
Daily errands do not require a car.



EDUCATION
(Bachelor's Degree+)
1/2 mi — 65.0%
1 mi — 78.2%



MEDIAN AGE
1/4 mi — 34.1
1/2 mi — 34.5

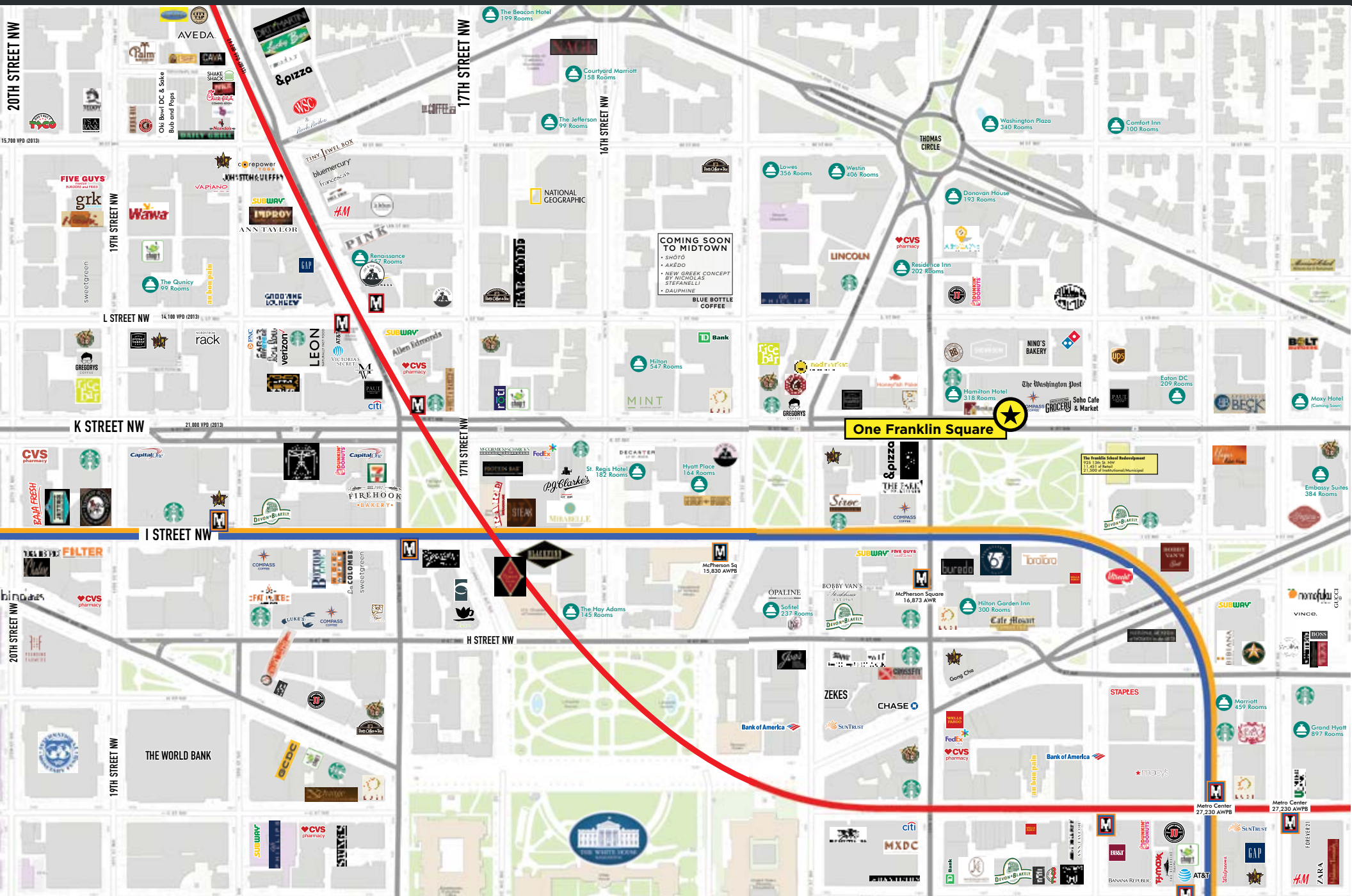


RIDERSHIP
(McPherson)
13,889 AWPB

CONTACT

JARED MEIER
410-963-5654
jared.meier@cbre.com

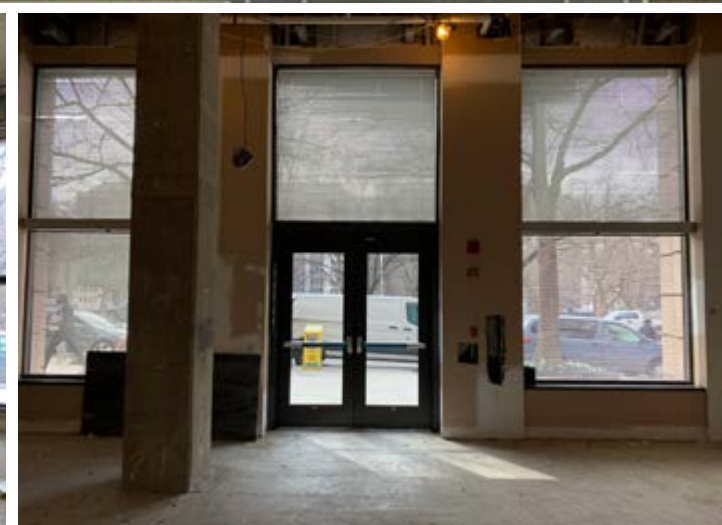
JULIA WEBER
202-677-3556
julia.weber@cbre.com



COMING SOON TO MIDTOWN

- SHOTO
- AKEDO
- NEW GREEK CONCEPT BY NICHOLAS STEFANELLI
- DALPHINE BLUE BOTTLE COFFEE

One Franklin Square



[CLICK FOR 360° VIEW](#)