

23705 INDUSTRIAL PARK DR.  
FARMINGTON HILLS, MICHIGAN

HI-TECH FOR SALE OR LEASE  
18,500 Square Feet Available



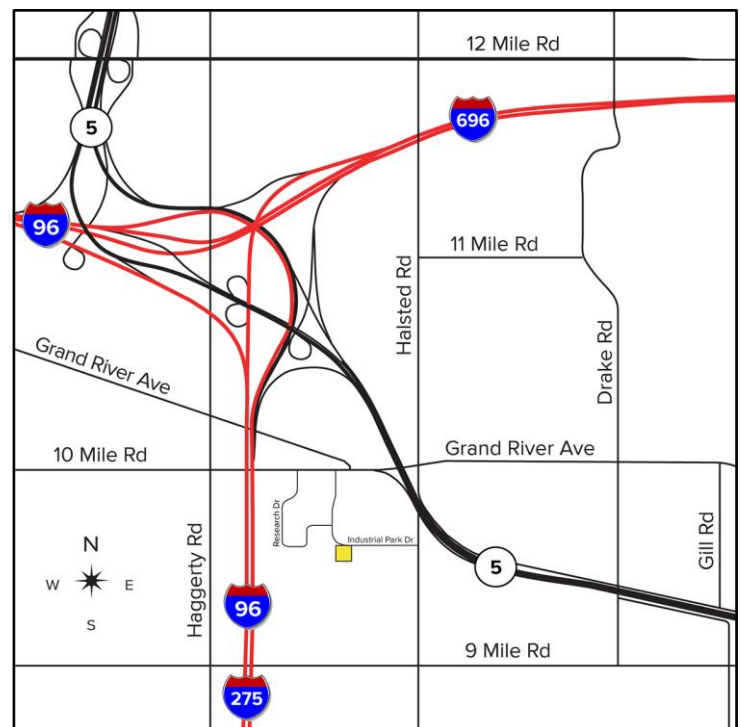
**SIGNATURE  
ASSOCIATES**  
KNOW SIGNATURE | KNOW RESULTS

**STUDIO CENTER**



## PROPERTY FEATURES

- 18,500 square feet available
- 4,000 square feet of office space
- 17' clear height
- (1) Truckwell
- Hi-tech/industrial building in a campus-like setting
- Featuring modern office, full HVAC, load-supporting mezzanine, and heavy power
- Well-suited for many uses including laboratories, testing, engineering, and design companies.
- Easy access to I-96, I-696, I-275, M-5 expressways
- Sale price: \$1,295,000 (\$70.00/sq. ft.)
- Lease rate: \$6.35/sq. ft. NNN



For more information, please contact:

**JIM MONTGOMERY**  
(248) 359 0614

[jmontgomery@signatureassociates.com](mailto:jmontgomery@signatureassociates.com)

**CHRISTOPHER M. D'ANGELO**  
(248) 948 0109

[cdangelo@signatureassociates.com](mailto:cdangelo@signatureassociates.com)

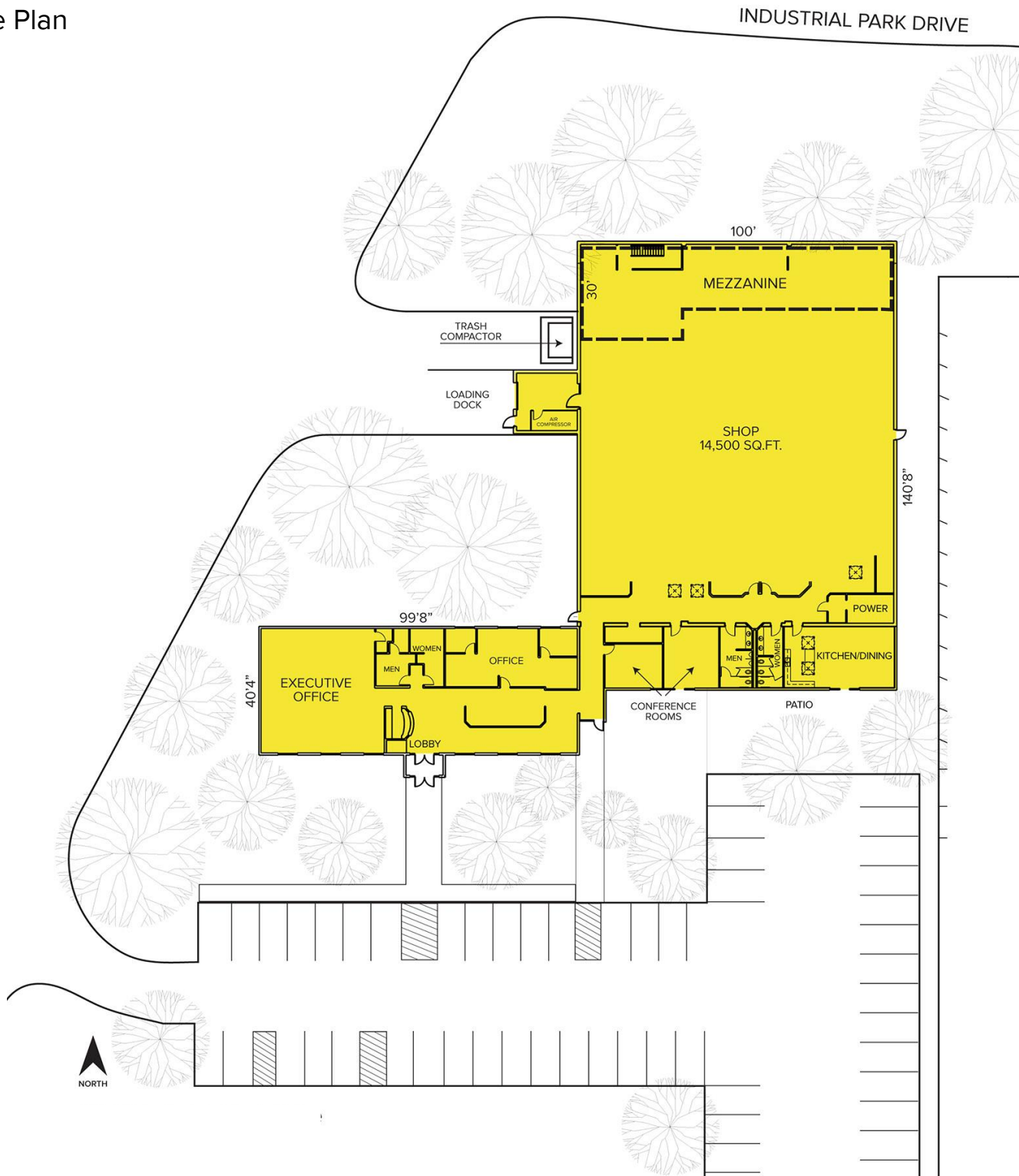
**SIGNATURE ASSOCIATES**  
One Towne Square, Suite 1200  
Southfield, MI 48076  
[www.signatureassociates.com](http://www.signatureassociates.com)

# 23705 Industrial Park— Farmington Hills, Michigan

## Hi-Tech For Sale or Lease

18,500  
Square Feet  
AVAILABLE

### Site Plan



For more information, please contact:

**JIM MONTGOMERY**

(248) 359 0614

[jmontgomery@signatureassociates.com](mailto:jmontgomery@signatureassociates.com)

**CHRISTOPHER M. D'ANGELO**

(248) 948 0109

[cdangelo@signatureassociates.com](mailto:cdangelo@signatureassociates.com)

**SIGNATURE ASSOCIATES**

One Towne Square, Suite 1200

Southfield, MI 48076

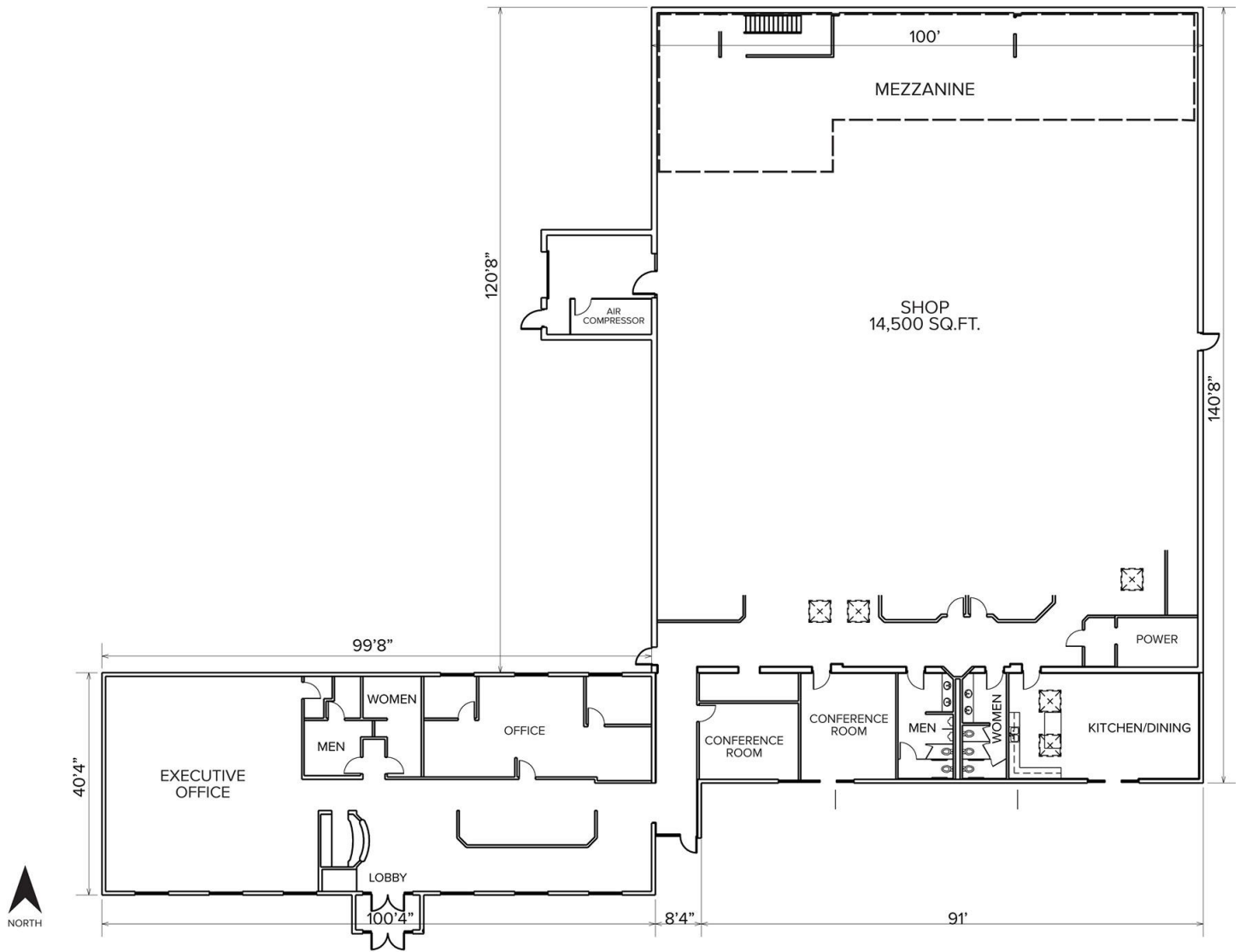
[www.signatureassociates.com](http://www.signatureassociates.com)

# 23705 Industrial Park— Farmington Hills, Michigan

## Hi-Tech For Sale or Lease

18,500  
Square Feet  
AVAILABLE

### Floor Plan



For more information, please contact:

**JIM MONTGOMERY**

(248) 359 0614

[jmontgomery@signatureassociates.com](mailto:jmontgomery@signatureassociates.com)

**CHRISTOPHER M. D'ANGELO**

(248) 948 0109

[cdangelo@signatureassociates.com](mailto:cdangelo@signatureassociates.com)

**SIGNATURE ASSOCIATES**

One Towne Square, Suite 1200

Southfield, MI 48076

[www.signatureassociates.com](http://www.signatureassociates.com)

# 23705 Industrial Park– Farmington Hills, Michigan

Hi-Tech For Sale or Lease

18,500  
Square Feet  
AVAILABLE

Aerial



For more information, please contact:

**JIM MONTGOMERY**  
(248) 359 0614  
jmontgomery@signatureassociates.com

**CHRISTOPHER M. D'ANGELO**  
(248) 948 0109  
cdangelo@signatureassociates.com

**SIGNATURE ASSOCIATES**  
One Towne Square, Suite 1200  
Southfield, MI 48076  
www.signatureassociates.com