

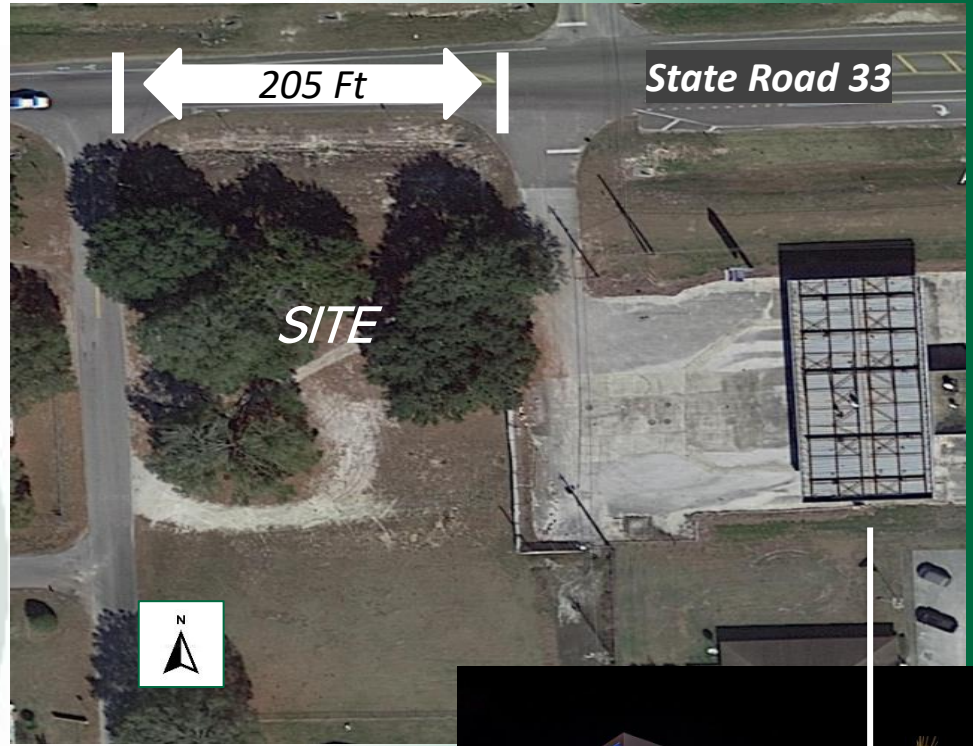
527 Commonwealth Ave., SW
 Polk City, FL 33868
FOR SALE, LAND LEASE, OR BUILD TO SUIT

Call for Land Lease and Build to Suit Details

PROPERTY HIGHLIGHTS:

- Land SF: 49,324 SF
- 205 Ft. of Frontage on SR 33

➤ Join:  & 
Uniquely Convenient



DEMOGRAPHICS

2022	1 mile	3 miles	5 miles
Population:	3,968	10,555	17,694
Average Income:	\$62,397	\$66,104	\$71,646
Average Age:	45	44	44

TRAFFIC COUNT

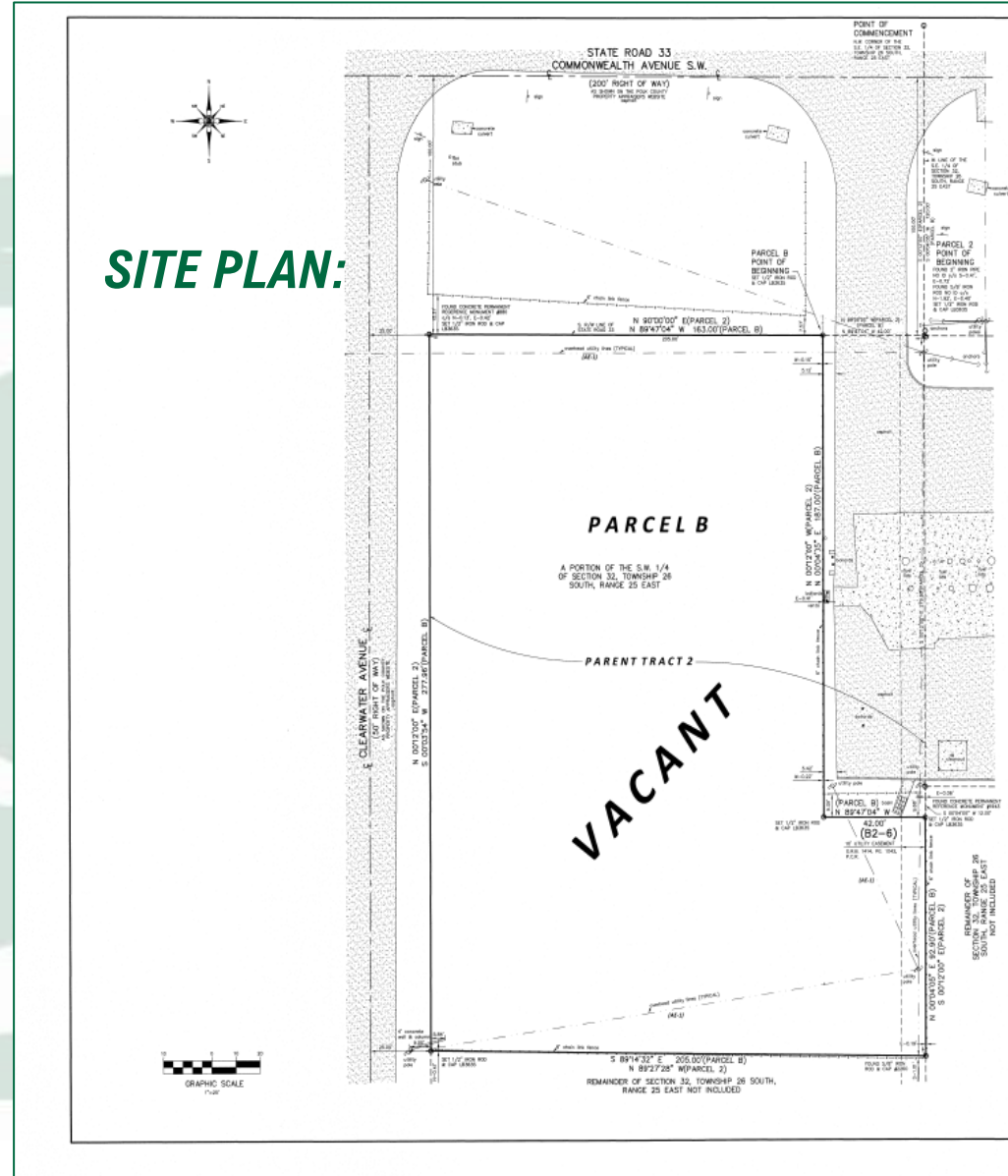
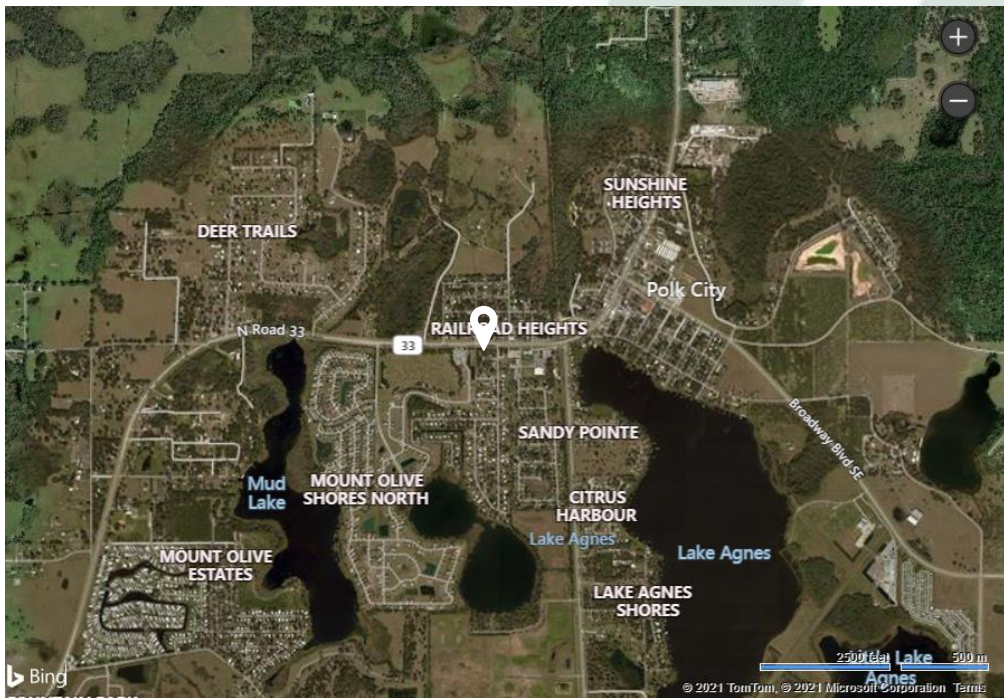
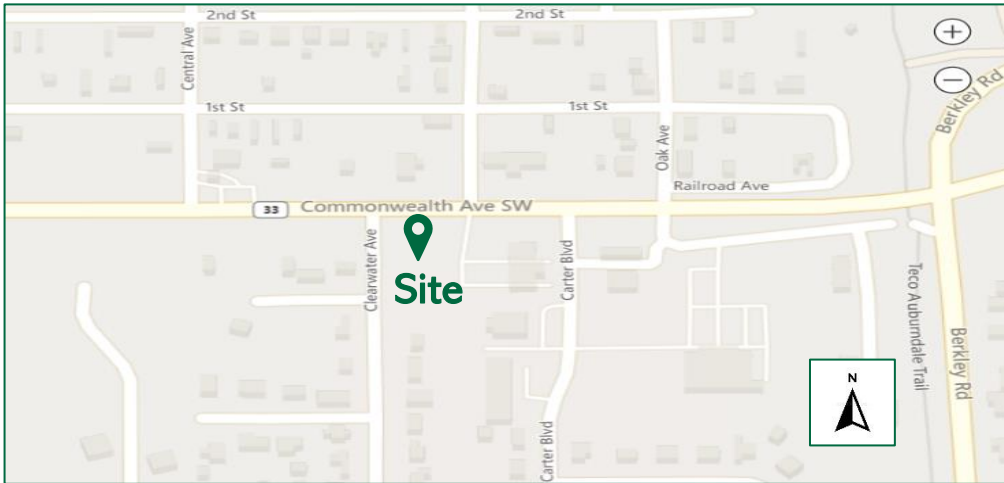
- 10,337 VPD

ZONING

- C3

Steven A. Leeds

527 Commonwealth Ave., SW Polk City, FL 33868



Commercial Real Estate and Construction Services

Subject to errors, omissions, prior withdrawal, lease or sale without notice

Steven A. Leeds



561.998.2427 |



Steve@greencapitalrealty.com |



Greencapitalrealty.com

2799 Northwest Boca Raton Blvd. Suite 213, Boca Raton FL, 33431