



Available For Sale

# RIVER OAKS PLAZA

28118 W. Agoura Road  
Agoura Hills, California 91301

[REQUEST A TOUR](#)

**CBRE**

## property details

**Sale Price:** \$4,320,000

**Building Size:** Approximately 12,978 RSF

**Lot Size:** Approximately 26,720 SF (.62 acres)

**Floors:** 2

**Year Built:** 2002

**Parking:** 3/1,000 USF, 27 covered and 17 surface stalls

**Zoning:** A HBP-OR-OA-FC

**APN:** 2061-016-073; 2061-016-075

**Occupancy:** 3,474 RSF currently vacant

## property highlights

- For lease or sale opportunity
- Vacant suite available for immediate occupancy
- Unique purchase opportunity with flexible occupancy options
- Existing tenants do not have renewal options
- Staggered expirations would allow an owner to occupy part of the building now, with the balance available for occupancy mid-2021
- Outstanding views
- Subterranean secure and surface parking
- Located near numerous retail amenities
- Excellent access to 101 Freeway

## rent roll

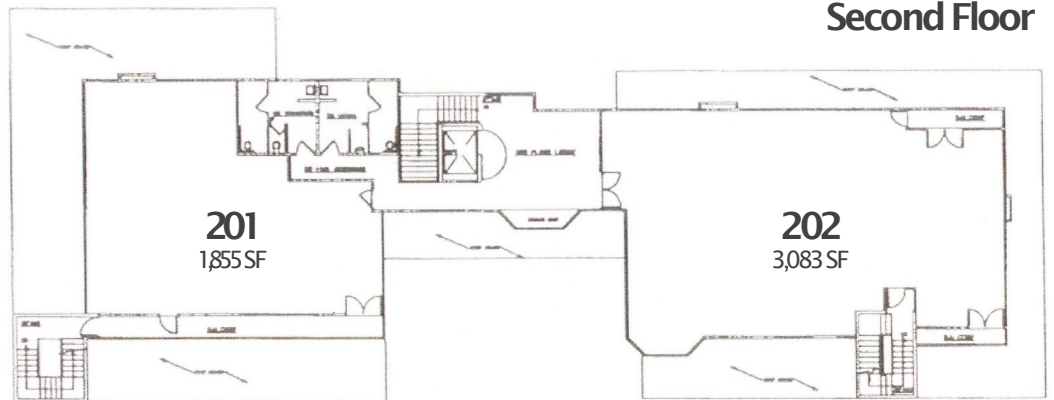
Suite	Square Feet	Availability
103	3,966 RSF	2/1/2021
105*	3,474 RSF	Vacant
200*	600 RSF	30 days notice
201	1,855 RSF	6/1/2021
202	3,083 RSF	6/1/2021

\* 105/200 contiguous to 4,074 RSF

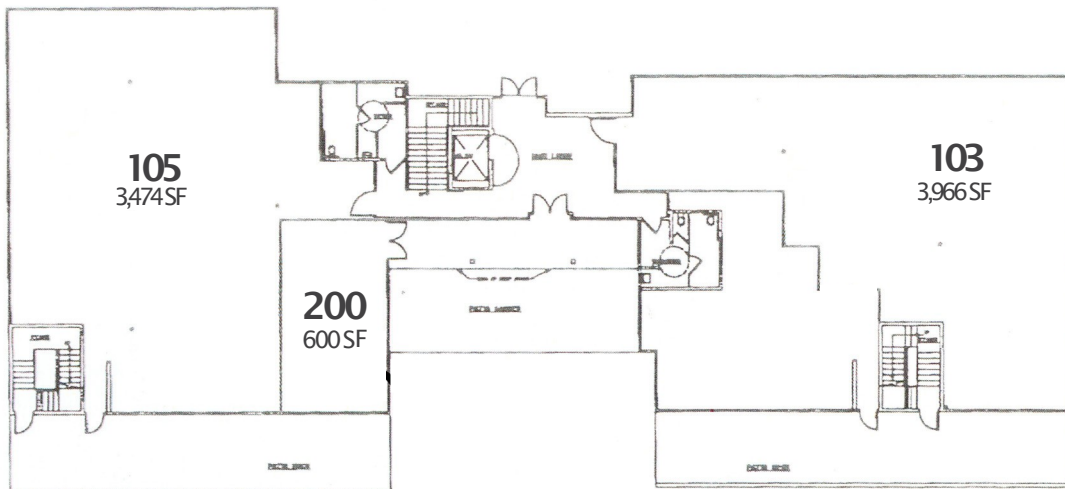




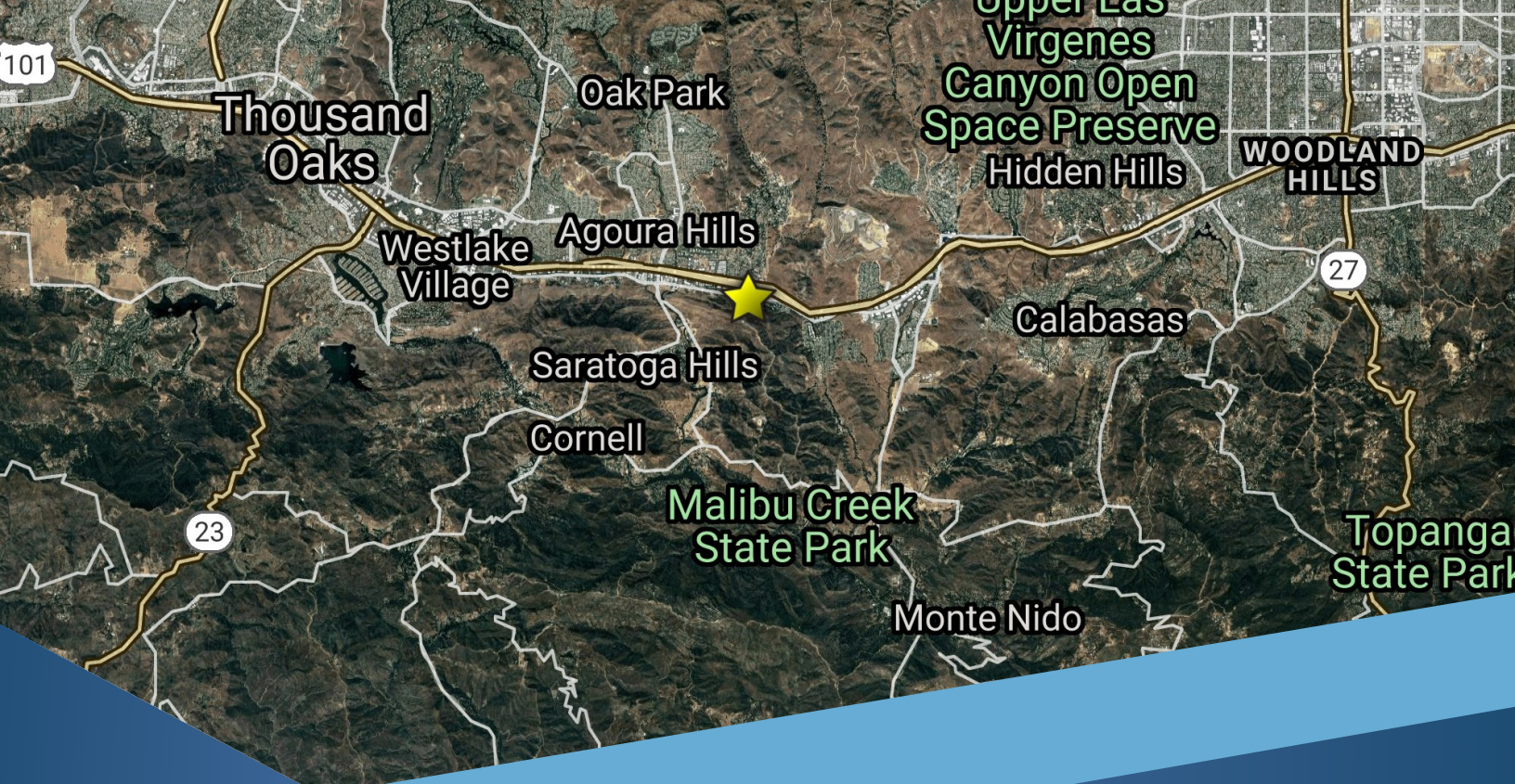
## Second Floor



## First Floor



As-Built Plans Available  
Upon Request



**MICHAEL SLATER**

Senior Vice President  
+1 805 288 4710  
[michael.slater@cbre.com](mailto:michael.slater@cbre.com)  
Lic. 01050876

**TOM DWYER**

Senior Vice President  
+1 805 288 4711  
[tom.dwyer@cbre.com](mailto:tom.dwyer@cbre.com)  
Lic. 01197938

**CAROLINE BIGELOW**

Senior Associate  
+1 805 288 4712  
[caroline.bigelow@cbre.com](mailto:caroline.bigelow@cbre.com)  
Lic. 01177185

**MIKE SHELLAW**

Director  
+ 1 818 251 3604  
[mike.shellaw@cbre.com](mailto:mike.shellaw@cbre.com)  
Lic. 01329540

**MASON GRAY**

Associate  
+1 805 288 4716  
[mason.gray@cbre.com](mailto:mason.gray@cbre.com)  
Lic. 02035347



© 2020 CBRE, Inc. All rights reserved. This information has been obtained from sources believed reliable, but has not been verified for accuracy or completeness. You should conduct a careful, independent investigation of the property and verify all information. Any reliance on this information is solely at your own risk. CBRE and the CBRE logo are service marks of CBRE, Inc. All other marks displayed on this document are the property of their respective owners, and the use of such logos does not imply any affiliation with or endorsement of CBRE. Photos herein are the property of their respective owners. Use of these images without the express written consent of the owner is prohibited.