

FOR LEASE



500 S. Rancho Santa Fe Rd.

San Marcos, CA 92078

Property Highlights

- Retail/Office Storefront Space with Prime Exposure and Signage facing Rancho Santa Fe Road
- Mixed-Use Property Located Along Highly Trafficked Corridor

Spaces Available

\$1.00 psf NNN Available:

Suite 101A	871 sf
Suite 102	1,159 sf

Demographics

2014 (Est.)	1 Mile	3 Miles	5 Miles
Total Population	12,602	97,165	214,400
Median Income	\$43,134	\$58,346	\$63,879

31,565

Cars Per Day
S. Rancho Santa Fe Road
@ Mirada Drive

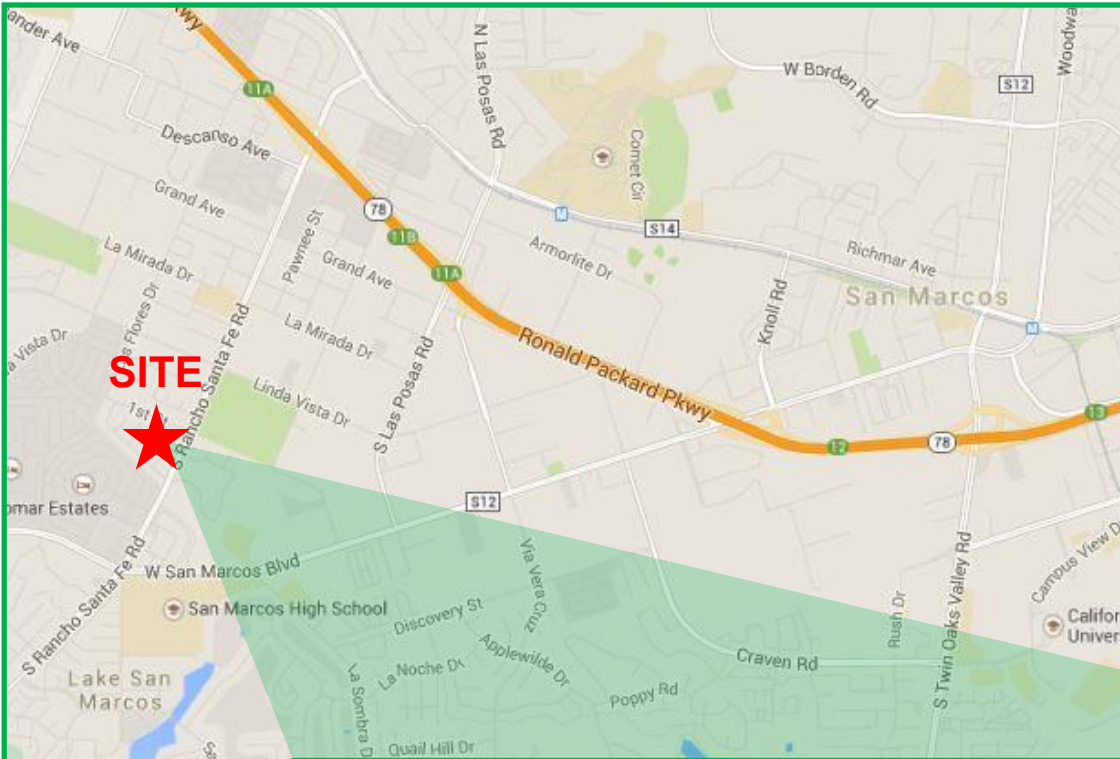
This information is compiled from data which we believe to be correct but no liability is assumed by this company as to accuracy of such data. v11

Nick Zech #01721457
858.232.2100
nzech@cdccommercial.com

Matt Orth #01857155
858.736.1337
morth@cdccommercial.com



Map



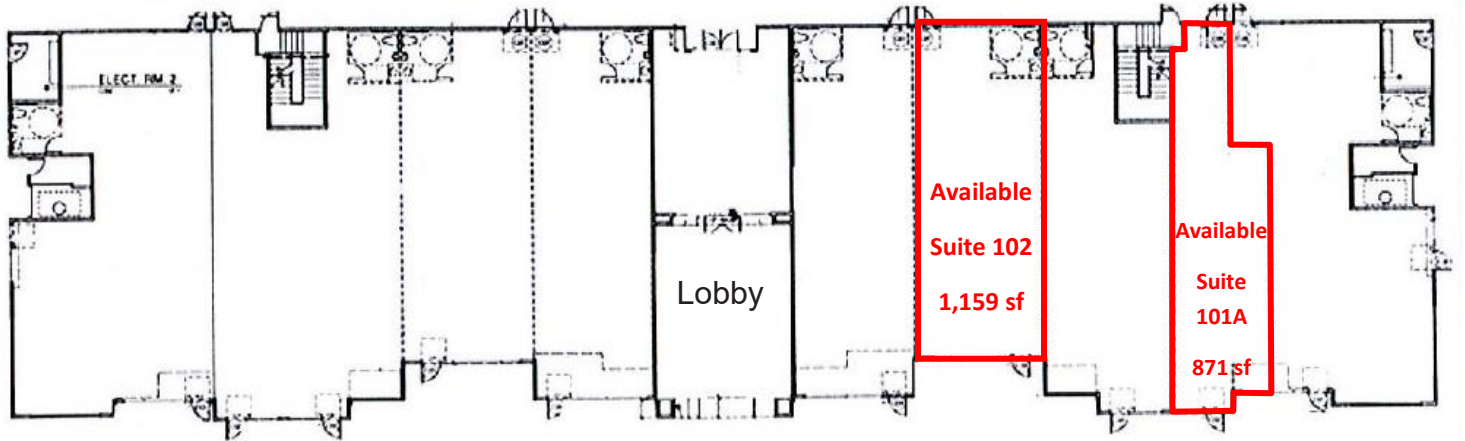
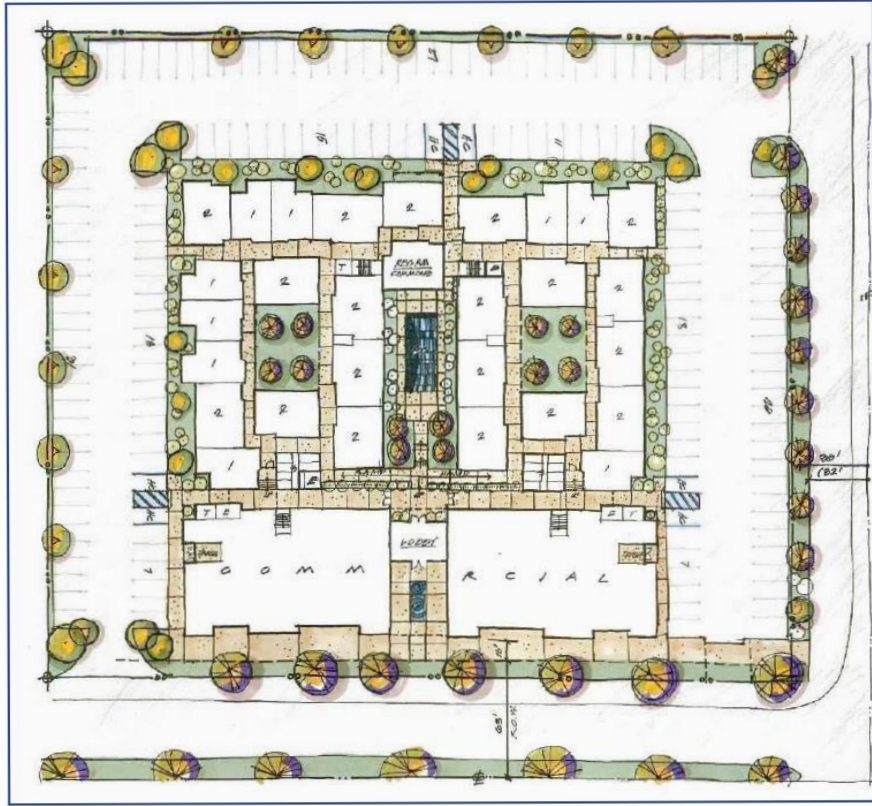
This information is compiled from data which we believe to be correct but no liability is assumed by this company as to accuracy of such data. v11

Nick Zech #01721457
858.232.2100
nzech@cdccommercial.com

Matt Orth #01857155
858.736.1337
morth@cdccommercial.com



Floor Plan



This information is compiled from data which we believe to be correct but no liability is assumed by this company as to accuracy of such data. v11

Nick Zech #01721457
858.232.2100
nzech@cdccommercial.com

Matt Orth #01857155
858.736.1337
morth@cdccommercial.com



11440 W Bernardo Ct, #300, San Diego, CA 92127, Phone 760.743.8500, Fax 858.362.7987

Demographics

Radius	1 Mile		3 Mile		5 Mile	
Population						
2019 Projection	13,215		102,947		214,400	
2014 Estimate	12,602		97,165		202,419	
2010 Census	12,351		91,974		191,799	
Growth 2014 - 2019	4.86%		5.95%		5.92%	
Growth 2010 - 2014	2.03%		5.64%		5.54%	
2014 Population by Hispanic Origin	4,723		33,283		57,207	
2014 Population By Race	12,602		97,165		202,419	
White	11,148	88.46%	80,345	82.69%	169,752	83.86%
Black	289	2.29%	2,835	2.92%	5,504	2.72%
Am. Indian & Alaskan	177	1.40%	1,206	1.24%	2,357	1.16%
Asian	611	4.85%	8,507	8.76%	16,000	7.90%
Hawaiian & Pacific Island	35	0.28%	437	0.45%	834	0.41%
Other	343	2.72%	3,835	3.95%	7,973	3.94%
Households						
2019 Projection	5,406		35,592		75,914	
2014 Estimate	5,146		33,531		71,550	
2010 Census	5,030		31,617		67,566	
Growth 2014 - 2019	5.05%		6.15%		6.10%	
Growth 2010 - 2014	-2.34%		2.48%		2.49%	
Owner Occupied	3,523	68.46%	20,799	62.03%	47,250	66.04%
Renter Occupied	1,624	31.56%	12,731	37.97%	24,300	33.96%
2014 Households by HH Income	5,146		33,531		71,551	
Income: <\$25,000	1,312	25.50%	6,497	19.38%	13,001	18.17%
Income: \$25,000 - \$50,000	1,690	32.84%	8,246	24.59%	16,176	22.61%
Income: \$50,000 - \$75,000	869	16.89%	5,249	15.65%	11,327	15.83%
Income: \$75,000 - \$100,000	589	11.45%	4,325	12.90%	9,166	12.81%
Income: \$100,000 - \$125,000	262	5.09%	3,002	8.95%	6,535	9.13%
Income: \$125,000 - \$150,000	203	3.94%	2,006	5.98%	4,600	6.43%
Income: \$150,000 - \$200,000	153	2.97%	2,288	6.82%	5,671	7.93%
Income: \$200,000+	68	1.32%	1,918	5.72%	5,075	7.09%
2014 Avg Household Income	\$57,529		\$80,730		\$86,842	
2014 Med Household Income	\$43,134		\$58,346		\$63,879	

This information is compiled from data which we believe to be correct but no liability is assumed by this company as to accuracy of such data. v11

Nick Zech #01721457
858.232.2100
nzech@cdccommercial.com

Matt Orth #01857155
858.736.1337
morth@cdccommercial.com

