

AVAILABLE FOR LEASE

CONNECTICUT BELAIR MEDICAL PARK

12000-12018 Veirs Mill Road & 3909-3951 Ferrara Drive
Silver Spring, Maryland 20906

AVAILABLE SPACE:

12006-12008 Veirs Mill Rd.
700 to 1,400 Square Feet

3933-3935 Ferrara Dr.
700 to 1,400 Square Feet

*\$1,750 to \$3,500/month
plus utilities*

Built-out medical suites

Ideal Location:

Convenient to residential communities in Rockville, Wheaton, Kensington, Chevy Chase, Bethesda, and Silver Spring.

Close Proximity to:

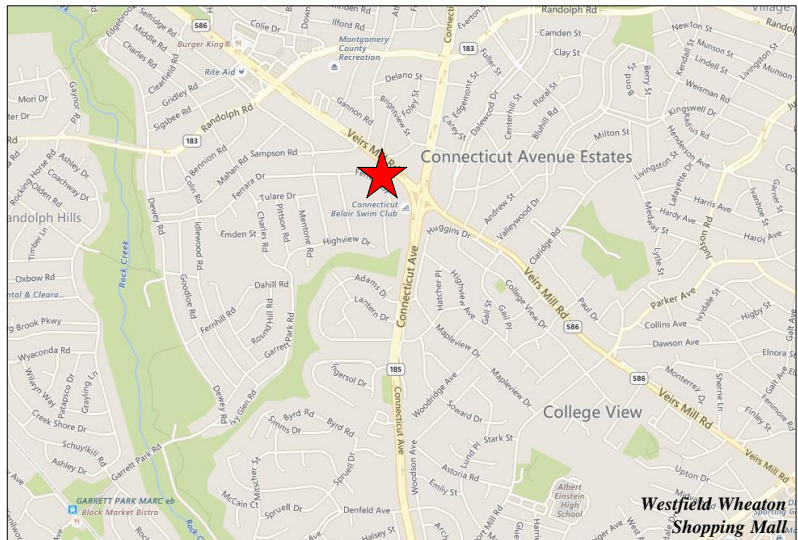
Holy Cross Hospital,
Kaiser Permanente Kensington Medical Center,
Suburban Hospital.

Present Specialties:

Family Medicine, Internal Medicine, Pediatrics, Gastroenterology, Nephrology, Oncology, Hematology, Dermatology, Audiology, General Dentistry, and Clinical Laboratory.



Located on the corner of Veirs Mill Road and Ferrara Avenue, one block north of Connecticut Avenue.



For more details or to arrange a tour please contact:

301.961.9696

Alex Alperstein

Ext. 215

aalperstein@amrcommercial.com

Sam Farnum

Ext. 216

sfarnum@amrcommercial.com

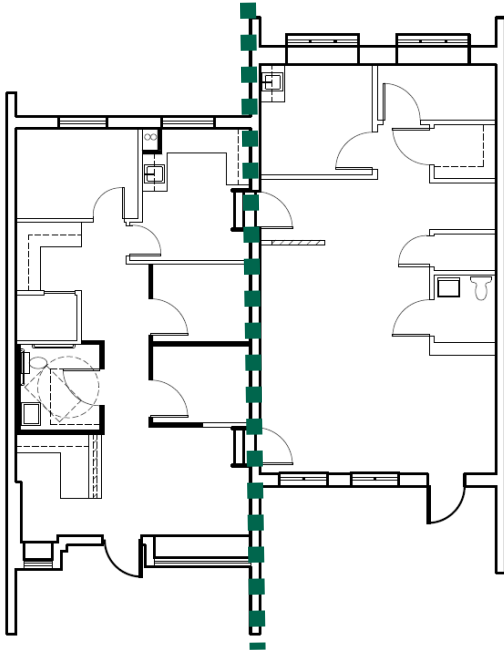


ALEXANDER, MONTROSE, RITTENBERG
Commercial Real Estate Brokerage
Est. 1994

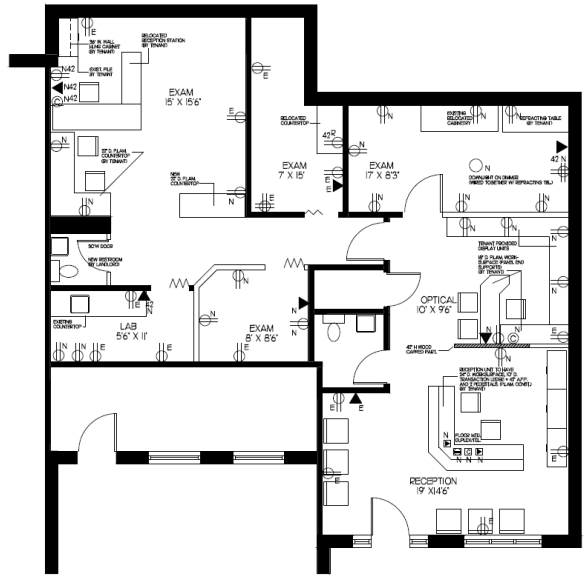
Celebrating
26 Years
1994-2020

A Member of **CORE**
NETWORK

12006-12008 Veirs Mill Road
700 SF to 1,400 SF



3933-3935 Ferrara Drive
700 SF to 1,400 SF



SITE PLAN

