



Gorgeous Conn Valley Ranch Retreat in the Heart of Napa Valley

Exclusively Listed By:

Bill Kurfess

650.769.3527

bkurfess@kiddermathews.com

LIC #01049307

Nigel Keep

406.588.2318

nkeep@kiddermathews.com

LIC #01367758

Introduction

Rising above the historic Conn Valley, this beautiful property, consisting of four contiguous view parcels, connects one to the glorious history of the Napa Valley. Across Conn Valley Road are the mysterious ruins of the Franco-Swiss Winery built in 1876. In the 1880's, the winery was producing more than 100,000 gallons per year. The property is only five miles from Meadowood Napa Valley; five miles to Downtown St. Helena; and two miles to Lake Hennessey. This is a rare opportunity to own 186 acres in four separate parcels of pristine Napa Valley land and an historic four bedroom, two bath home close to many of Napa's finest wineries.

Asking Price: \$5,900,000

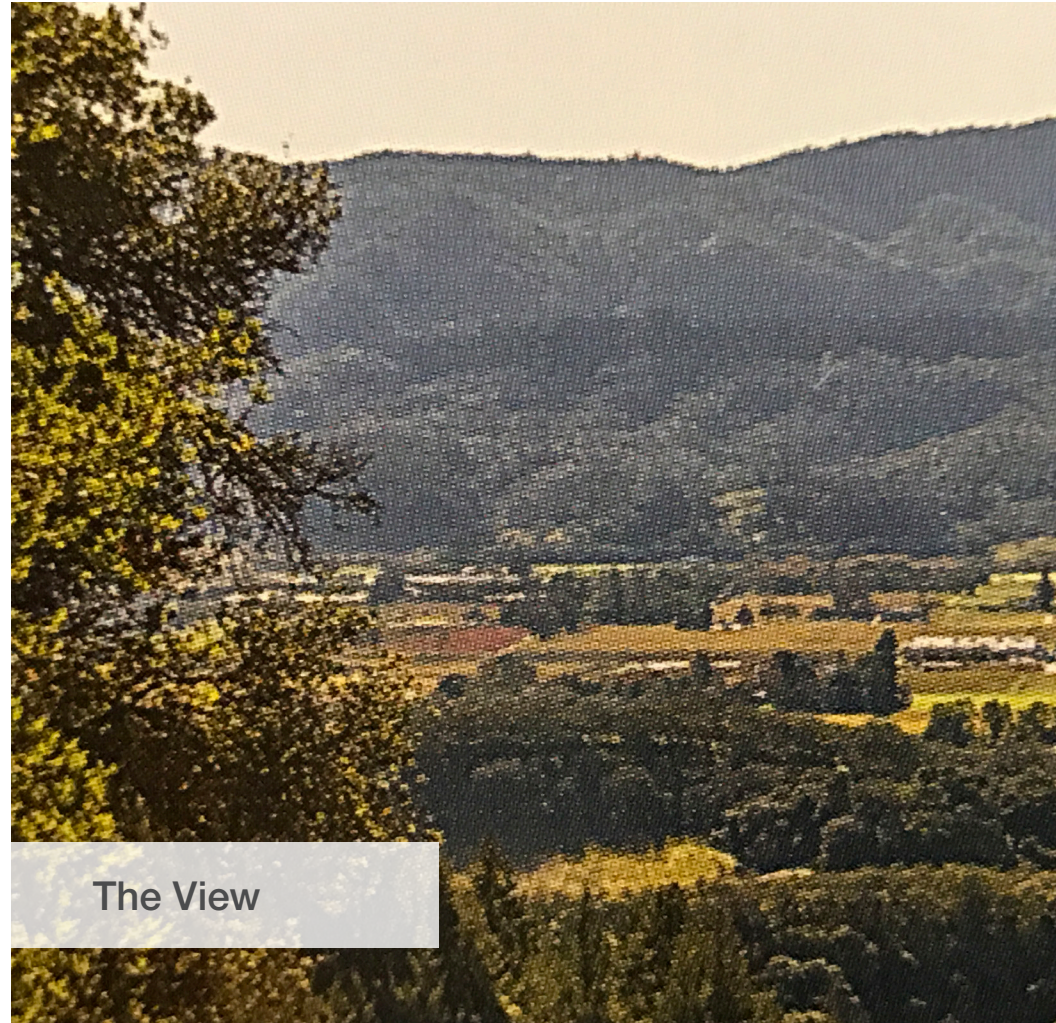
Exclusively Listed By:

Bill Kurfess
650.769.3527
bkurfess@kiddermathews.com
LIC #01049307

Nigel Keep
406.588.2318
nkeep@kiddermathews.com
LIC #01367758



The House



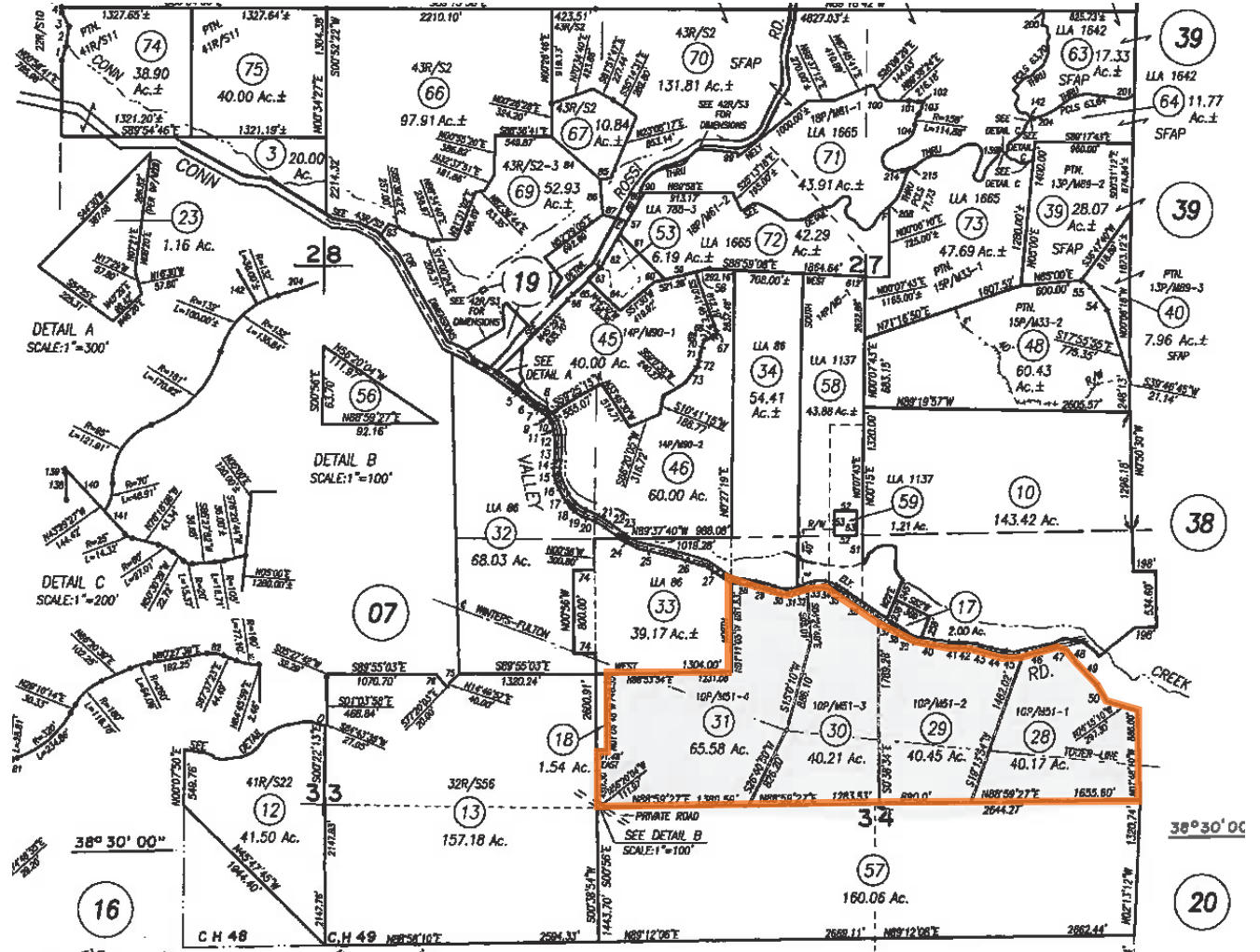
The View

Exclusively Listed By:

Bill Kurfess
650.769.3527
bkurfess@kiddermathews.com
LIC #01049307

Nigel Keep
406.588.2318
nkeep@kiddermathews.com
LIC #01367758

PARCEL MAP



Exclusively Listed By:

Bill Kurfess
 650.769.3527
 bkurfess@kiddermathews.com
 LIC #01049307

Nigel Keep
 406.588.2318
 nkeep@kiddermathews.com
 LIC #01367758



Exclusively Listed By:

Bill Kurfess
650.769.3527
bkurfess@kiddermathews.com
LIC #01049307

Nigel Keep
406.588.2318
nkeep@kiddermathews.com
LIC #01367758