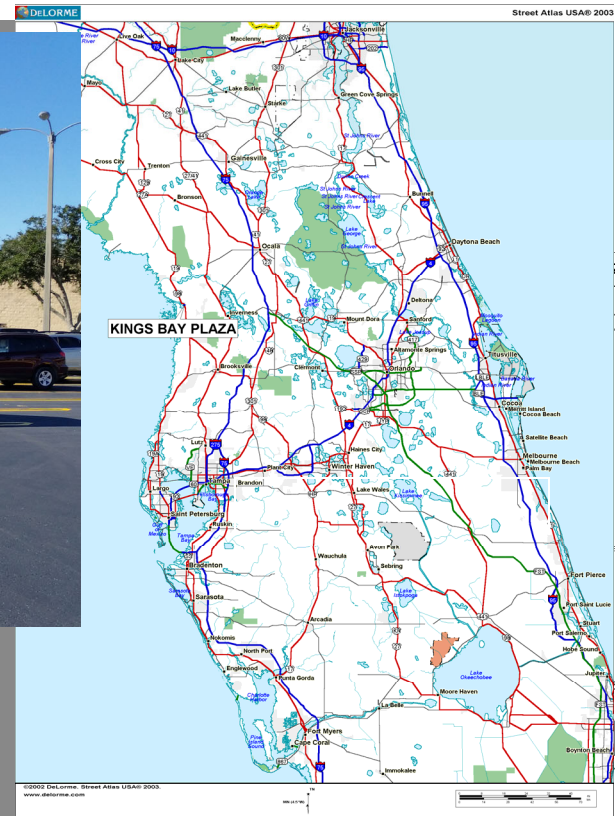


JOIN SAV-A-LOT, BIG LOTS & WEST MARINE

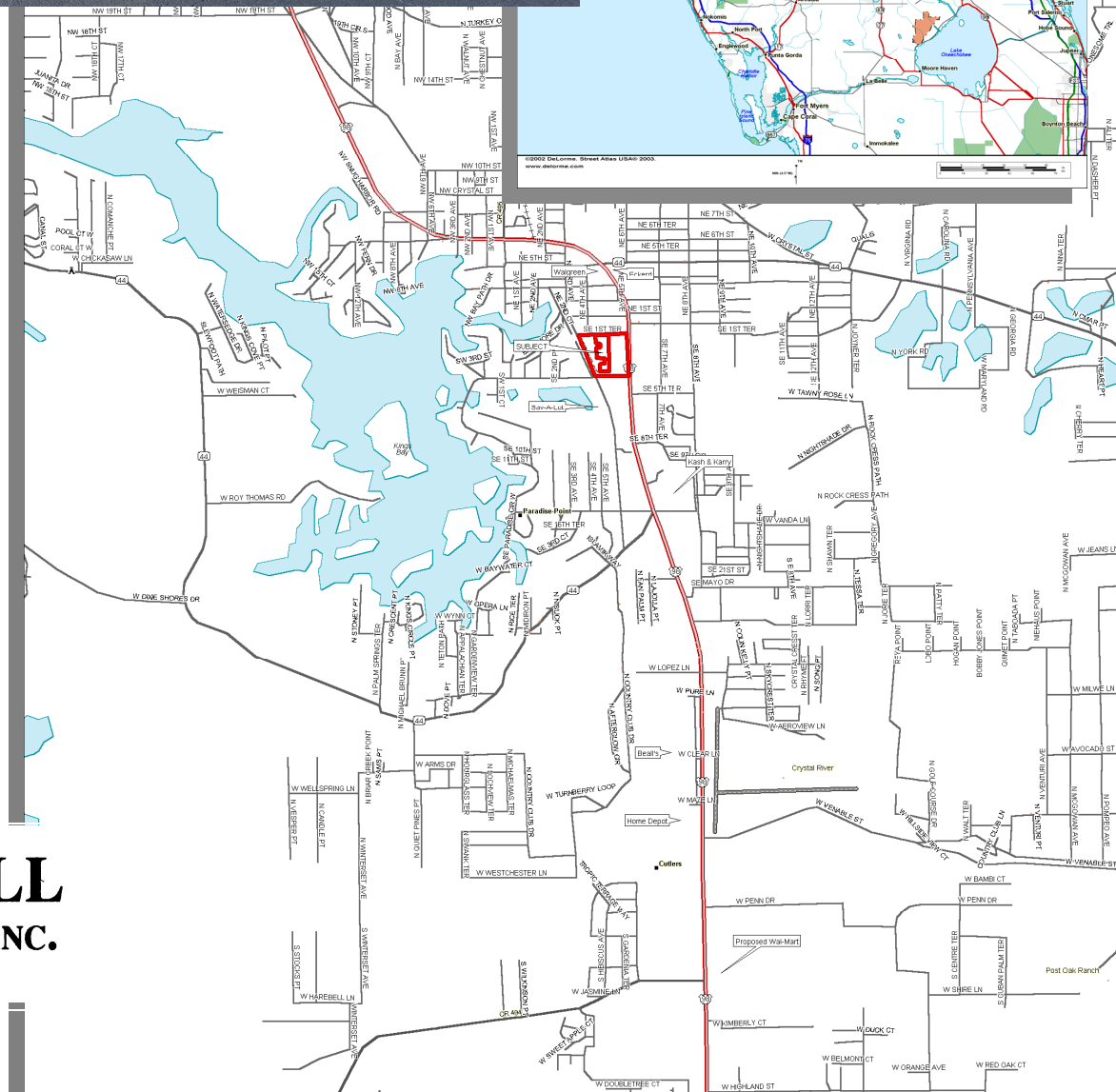
KINGS BAY PLAZA, CRYSTAL RIVER, FL



FOR LEASE INFORMATION
CONTACT
813-661-0500
campre@frontier.com

Colin Campbell, Jr.
Licensed Real Estate Broker

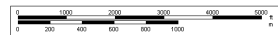
2608 Sablewood Dr.
Valrico, FL 33594
tel. 813-661-0500
Fax 813-661-0504



campre@frontier.com



CAMPBELL
REAL ESTATE, INC.

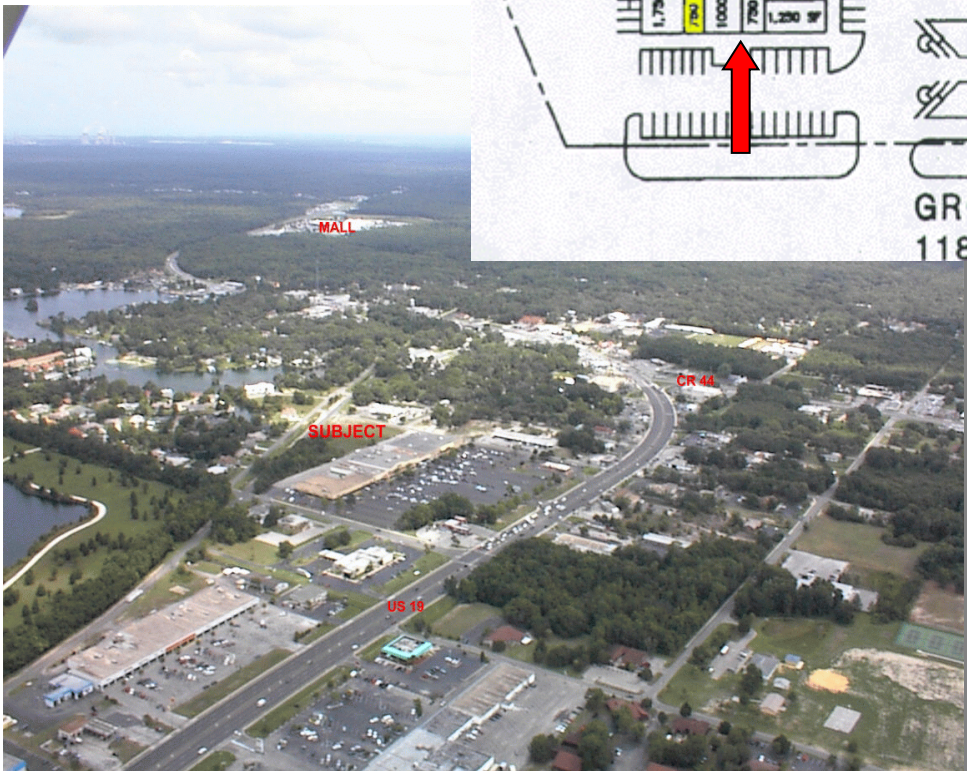
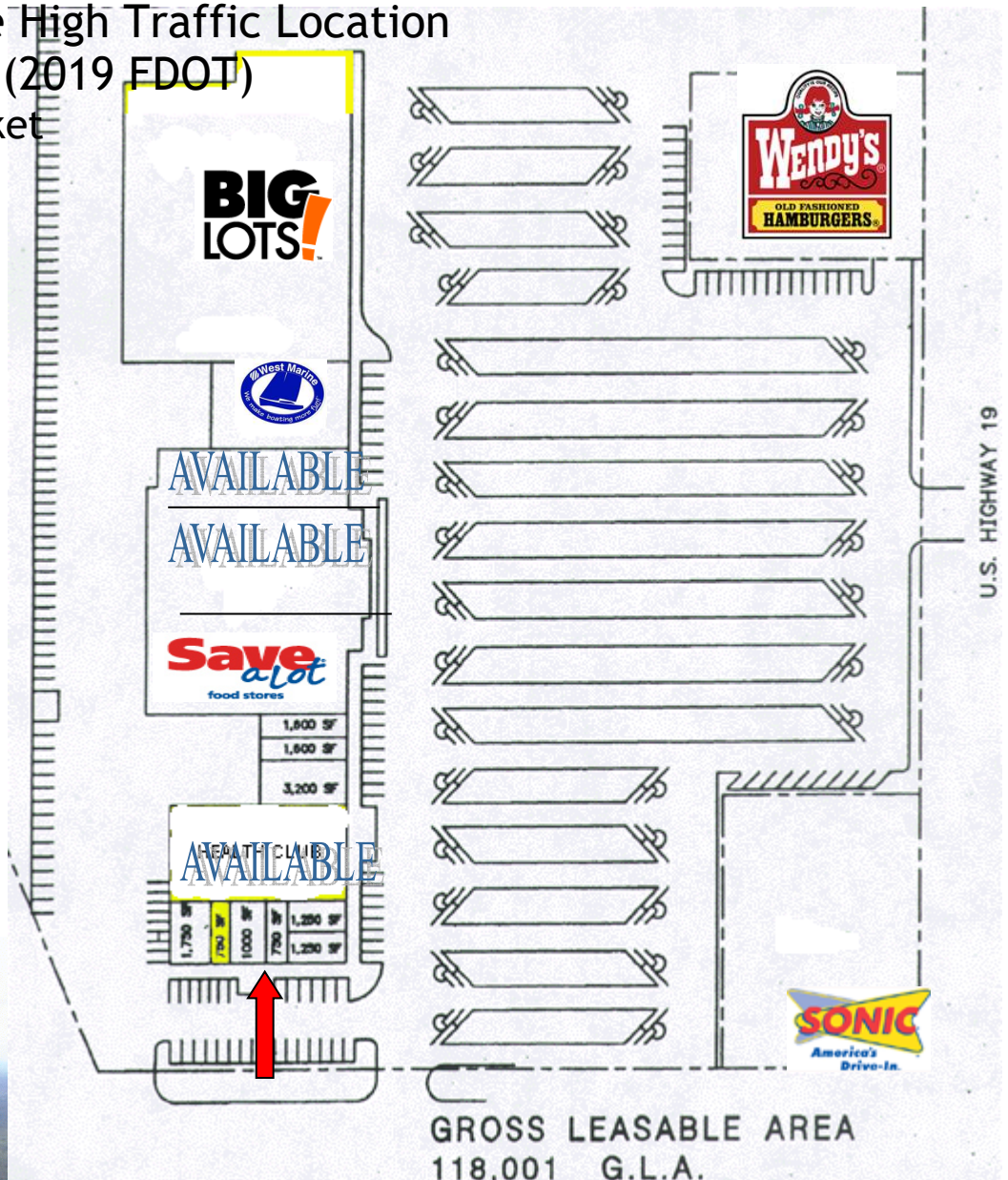


KINGS BAY PLAZA, CRYSTAL RIVER, FL

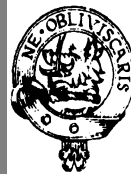
- ✚ US HWY 19 Premiere High Traffic Location
- ✚ 27,500 Cars per day (2019 FDOT)
- ✚ Established Retail Market
- ✚ High Parking Ratio
- ✚ GLA 118,001 sq. ft.

TENANTS:

- BIG LOTS 43,018 sq. ft.
- West Marine 6,400 sq. ft.
- Sav-a-Lot 18,000 sq. ft.
- AVAILABLE 9,814 sq. ft.**
- AVAILABLE 13,833 sq. ft.**
- Thai Restaurant
- AVAILABLE 10,800 sq. ft.**
- Gift Shop 1,600 sq. ft.
- Seafood Seller Restaurant
- Boost Mobile 1,250 sq. ft.
- Little Caesars
- Medical Center
- AVAILABLE 750 sq. Ft.**
- AVAILABLE 1,000 sq. ft.**
- Meryl Norman
- Coin Laundry



FOR LEASE INFORMATION
CONTACT
Colin Campbell, Jr.
813-661-0500
campre@frontier.com



**CAMPBELL
REAL ESTATE, INC.**

Area 1: 3.0 Mile Radius
14,731

Area 2: 5.0 Mile Radius
23,039

Area 3: 10.0 Mile Radius
63,368