

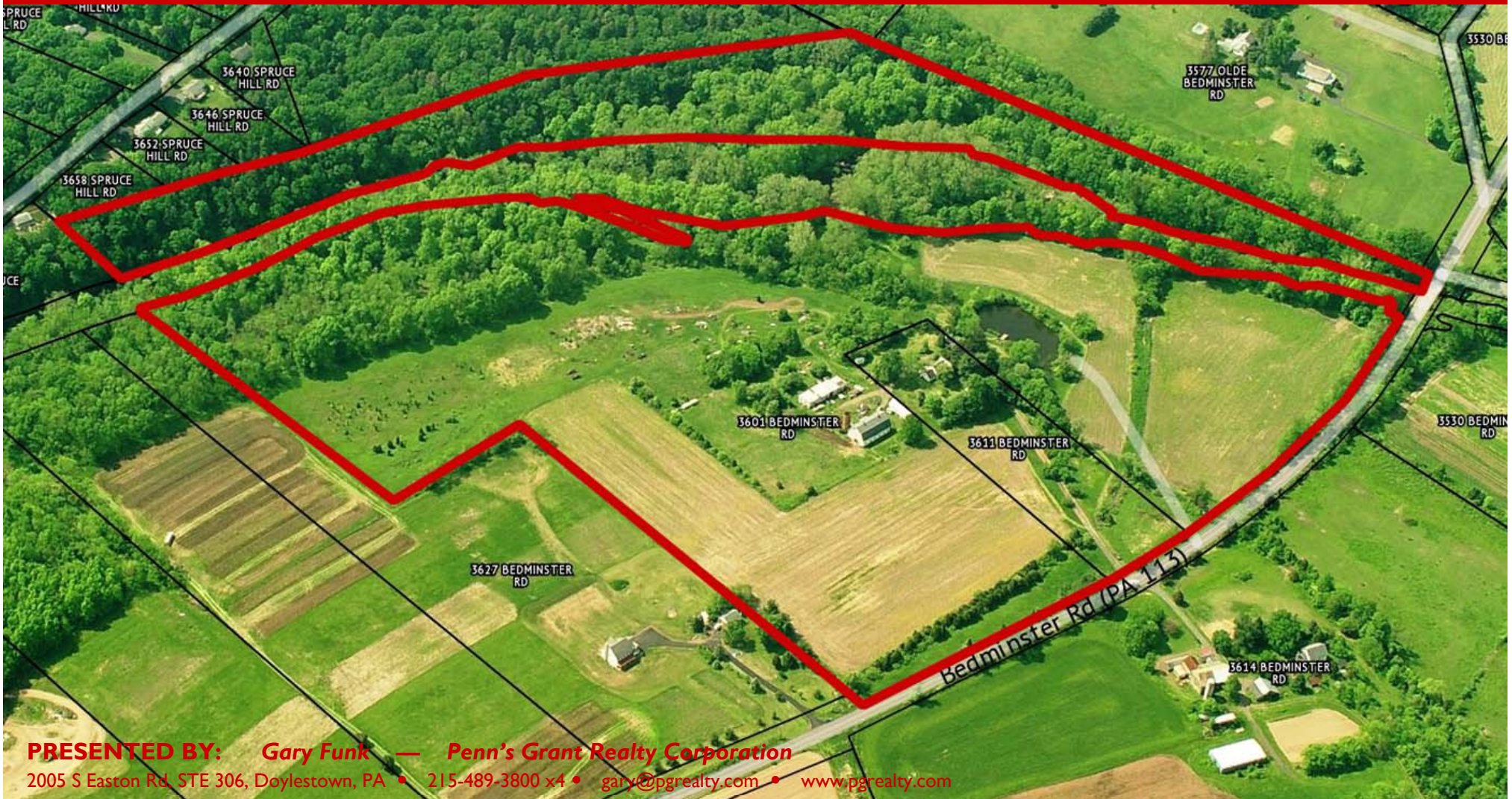
FOR SALE

60 ACRES ZONED PLANNED INDUSTRIAL



**3601 Bedminster Road
Tinicum, Bucks County, PA**

COMMERCIAL • INDUSTRIAL • INVESTMENT



PRESENTED BY: Gary Funk — Penn's Grant Realty Corporation
2005 S Easton Rd, STE 306, Doylestown, PA • 215-489-3800 x4 • gary@pgrealty.com • www.pgrealty.com

PROPERTY SPECIFICATIONS

A striking expansive 60± acres set on the banks of the Tohickon Creek. This property holds an existing classic Buck's county style farm, with a stone farmhouse, a large bank barn and several out buildings (all in as-is condition).

PROPERTY SPECIFICATIONS

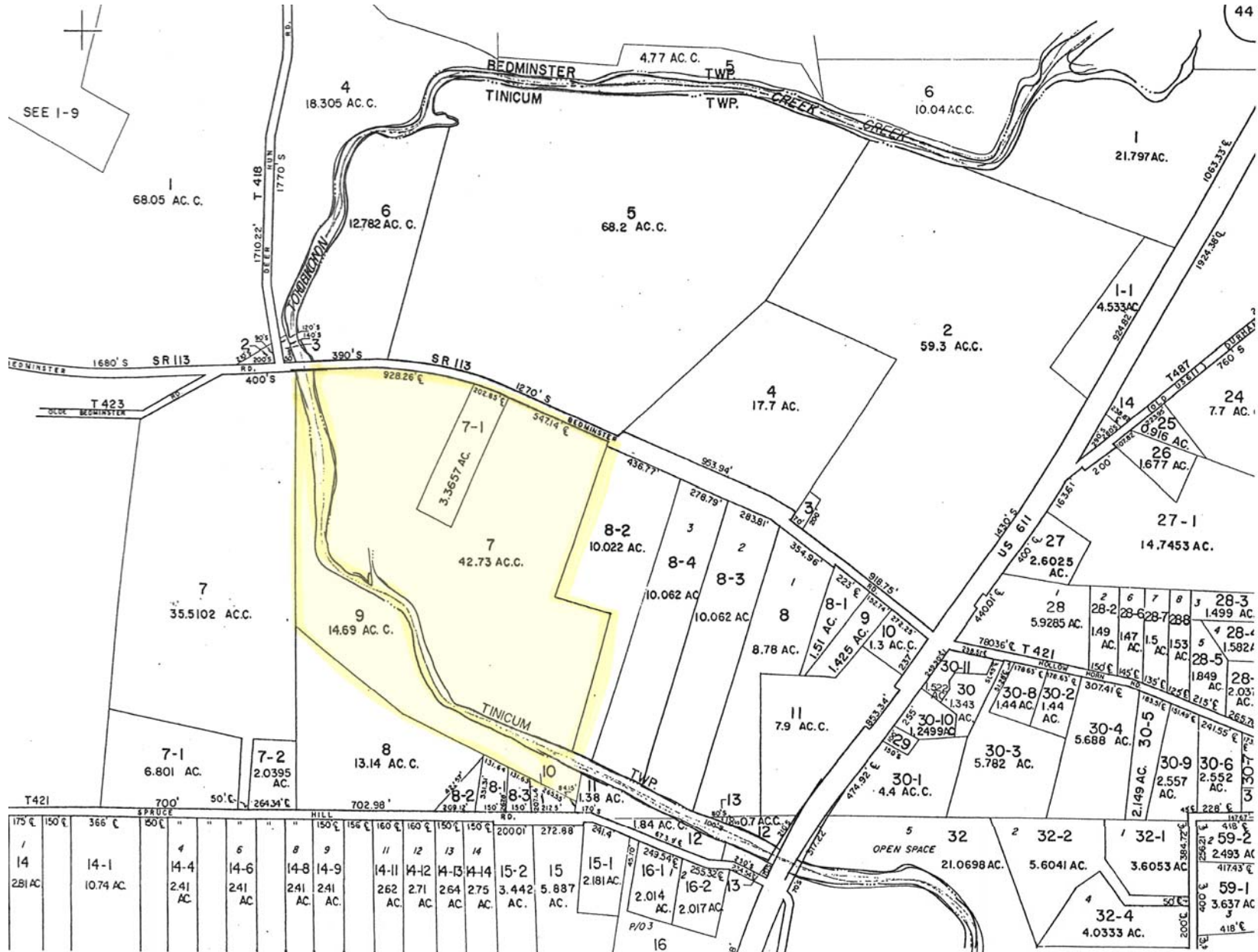
Building Structures: Farm house, barn, and out buildings (as-is condition)
Lot Size: 60 ± acres (3 parcels)
Water:Private
Sewer:Private
Utilities:..... Met Ed
Zoning:..... P-I Planned Industrial
Municipality: Tinicum and Bedminster Townships
Tax Parcel:44-011-007 / 44-011-007-001 / 01-015-009
Annual Tax (2015):\$6,927
Sale Price: \$849,000

Planned Industrial Zoning—Possible Uses

Manufacturing	Animal Husbandry	Mill	Residential Accessory Structure
Research	Golf Course	Junk Yard	Full Care Facility
Wholesale	Lumber Yard	Mini Warehouse	Solid Waste Facility
Industrial Park	Truck Sales	Accessory Office	Automobile Accessories
Printing	Parking Lot or Garage	Outside Storage or Display	
Contracting	Utilities	Temporary Structure	
Greenhouse	Emergency Services		

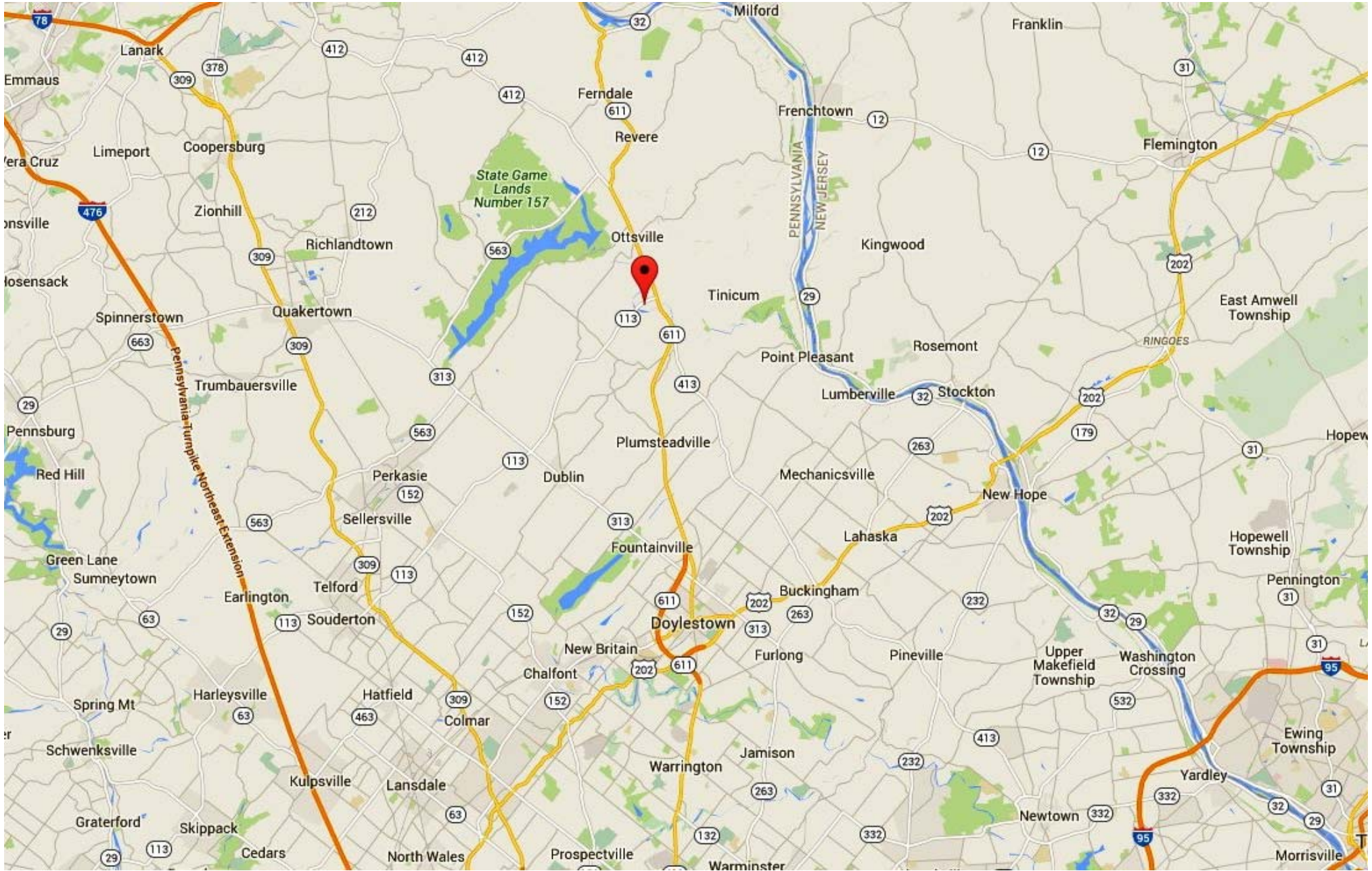






60 ACRES PLANNED INDUSTRIAL LAND

3601 BEDMINSTER ROAD, TINICUM PA



60 ACRES PLANNED INDUSTRIAL LAND

3601 BEDMINSTER ROAD, TINICUM PA

