

320-350 Industrial Drive, South Elgin IL

11,000 - 23,108 SF FOR SALE OR LEASE



Available 7/1/2021

SPECIFICATIONS

BUILDING SIZE: 23,108 SF

AVAILABLE: 11,000 – 23,108 SF

LAND AREA: 1.46 Acres (63,591 SF)

CLEAR HEIGHT: 18' - 20'

LOADING: 2 Ext. Truck Docks/6 Drive-In Doors

POWER: 1200 Amps; 120/208 Volts per Unit

PARKING: 38 Cars

SPRINKLER: Yes

RE TAXES: \$1.73 PSF (paid in 2020)

ZONING: I

SALE PRICE: Subject to Offer

LEASE PRICE: \$6.75 PSF Net

- Easy access to Rt. 20/Rt. 31
- Immaculate Condition
- Great User/Investor Facility
- Recent Office Renovations
- Floor Drains/Triple Catch Basins
- Private Loading Per Unit

Contact:



Mike DeSerto
224-588-3026
mdeserto@entrecmercial.com

Cory Kay
224-532-2497
ckay@entrecmercial.com

Rachel Peck
224-278-9777
rpeck@entrecmercial.com

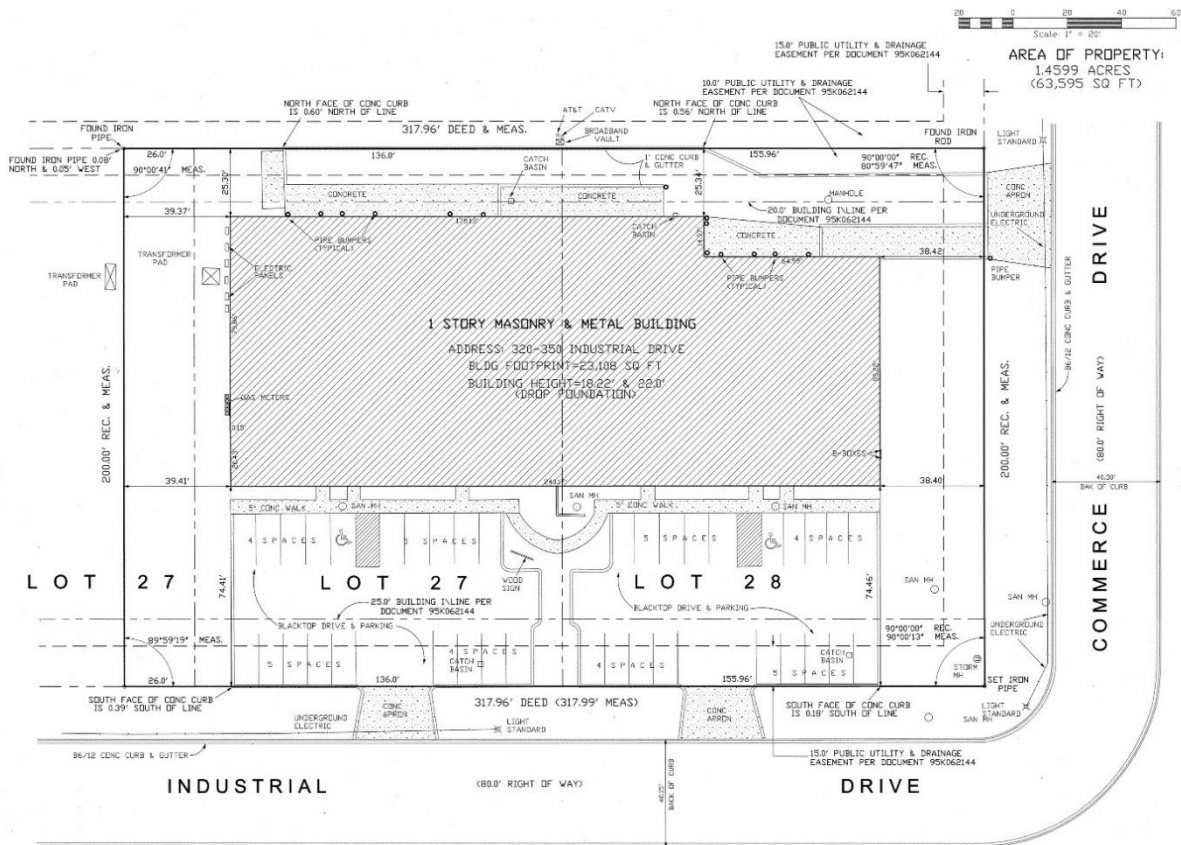
www.entrecmercial.com

3550 Salt Creek Lane, Suite 104, Arlington Heights, IL. 60005

ENTRE
Commercial Realty LLC

320-350 Industrial Drive, South Elgin IL

11,000 - 23,108 SF FOR SALE OR LEASE



Contact:

Mike DeSerto
 224-588-3026
 mdeserto@entrecmercial.com

Cory Kay
 224-532-2497
 ckay@entrecmercial.com

Rachel Peck
 224-278-9777
 rpeck@entrecmercial.com

www.entrecmercial.com

3550 Salt Creek Lane, Suite 104, Arlington Heights, IL. 60005



