



broker *Alert*

Contact | Call for a Tour: Jeff Becker 805.653-6794 ext. 201 | jbecker@beckergrp.com

333 East Thompson Boulevard Ventura • California



Downtown Professional Office Space for Lease

Real Estate Investments | Property Management

web | www.beckergrp.com tele | 805.653.6794 fax | 805.653.6795 street | 40 South Ash Street Ventura, CA 93001 mail | PO Box 23277, Ventura, CA 93002 license | 01213236

The information above has been obtained from sources believed reliable. While we do not doubt it's accuracy, we have not verified it and make no guarantee, warranty or representation about it. It is your responsibility to independently confirm it's accuracy and completeness. Any projections, opinions, assumption or estimates used are for example only and do not represent the current or future performance of the property. The value of this transaction to you depends on tax and other factors which should be evaluated by your tax, financial and legal advisors. You and your advisors should conduct a careful independent investigation of the property to determine to your satisfaction the stability of the property for your needs.



Professional Office For LEASE

Contact: Jeff Becker 805.653-6794 ext. 201 | jbecker@beckergroup.com

333 East Thompson Blvd
Ventura • California

\$ 1.75 psf NNN
[est @ \$0.20 psf]

- 1,800 sf Downtown Professional Offices
- Existing Layout includes Open Area
- New ADA Restroom + Kitchen Area
- Private On-Site Parking for 10 Vehicles
- High Visibility on Major Artery
- Convenient Access to 101 Frwy + Hwy 33



*Walking distance to Beach, State Fairgrounds,
Surfers Point, Pier, Metrolink, Historic Downtown,
Ventura City Hall, San Buenaventura Mission,
Restaurants, Shops, Other Retail + More*

Real Estate Investments | Property Management

web | www.beckergroup.com | tel | 805.653.6794 | fax | 805.653.6795 | street | 40 South Ash Street Ventura, CA 93001 | mail | PO Box 23277, Ventura, CA 93002 | license | 01213236

The information above has been obtained from sources believed reliable. While we do not doubt it's accuracy, we have not verified it and make no guarantee, warranty or representation about it. It is your responsibility to independently confirm it's accuracy and completeness. Any projections, opinions, assumption or estimates used are for example only and do not represent the current or future performance of the property. The value of this transaction to you depends on tax and other factors which should be evaluated by your tax, financial and legal advisors. You and your advisors should conduct a careful independent investigation of the property to determine to your satisfaction the stability of the property for your needs.



333 East Thompson Blvd

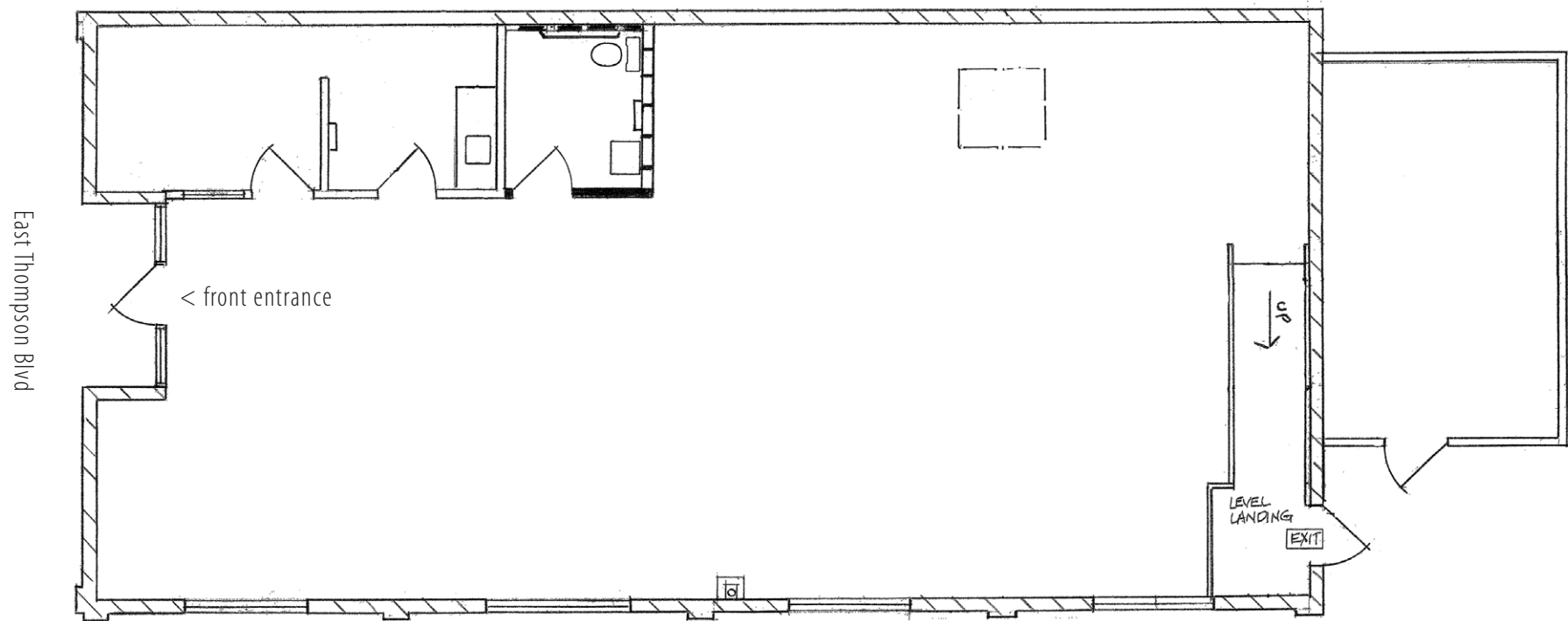
aerial map



Real Estate Investments | Property Management

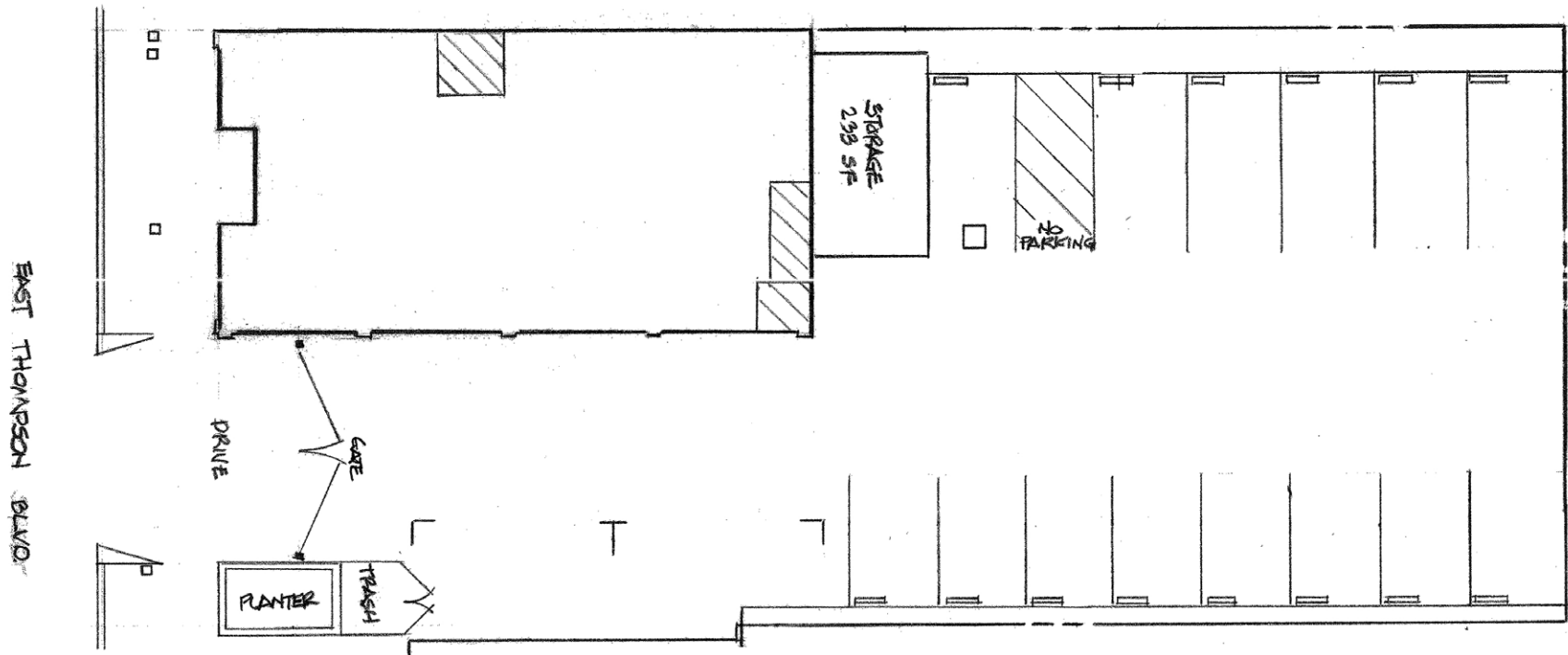
web | www.beckergroup.com | tele | 805.653.6794 | fax | 805.653.6795 | street | 40 South Ash Street Ventura, CA 93001 | mail | PO Box 23277, Ventura, CA 93002 | license | 01213236

The information above has been obtained from sources believed reliable. While we do not doubt it's accuracy, we have not verified it and make no guarantee, warranty or representation about it. It is your responsibility to independently confirm it's accuracy and completeness. Any projections, opinions, assumption or estimates used are for example only and do not represent the current or future performance of the property. The value of this transaction to you depends on tax and other factors which should be evaluated by your tax, financial and legal advisors. You and your advisors should conduct a careful independent investigation of the property to determine to your satisfaction the stability of the property for your needs.



Real Estate Investments | Property Management

web | www.beckergrp.com tele | 805.653.6794 fax | 805.653.6795 street | 40 South Ash Street Ventura, CA 93001 mail | PO Box 23277, Ventura, CA 93002 license | 01213236



Real Estate Investments | Property Management

web | www.beckergrp.com tele | 805.653.6794 fax | 805.653.6795 street | 40 South Ash Street Ventura, CA 93001 mail | PO Box 23277, Ventura, CA 93002 license | 01213236



Real Estate Investments | Property Management

web | www.beckergrp.com tele | 805.653.6794 fax | 805.653.6795 street | 40 South Ash Street Ventura, CA 93001 mail | PO Box 23277, Ventura, CA 93002 license | 01213236