

Plaza 305 Sublease

305 108th Avenue NE • Bellevue, WA



Space Highlights

- » 6,125 RSF on 1st floor
- » Sublease available January 1, 2017, and expiring July 31, 2019
- » Rare downtown Bellevue retail bank branch, but can be for pure office use with minimal construction needed
- » Ground floor, off lobby space with exterior signage rights

Amenities Include

- » 23 assigned parking stalls
- » Central downtown location with easy access to and from I-405
- » Retail amenities close by
- » Surrounded by corporate tenants such as Microsoft, Expedia, and Puget Sound Energy (partial list)
- » ATM spot available

Clay Nielsen

+1 206 521 2664

clay.nielsen@am.jll.com

Charlie Malley

+1 206 607 1761

charlie.malley@am.jll.com



Plaza 305 Sublease

305 108th Avenue NE • Bellevue, WA



Clay Nielsen
+1 206 521 2664
clay.nielsen@am.jll.com

Charlie Malley
+1 206 607 1761
charlie.malley@am.jll.com



Plaza 305 Sublease

305 108th Avenue NE • Bellevue, WA



Clay Nielsen
+1 206 521 2664
clay.nielsen@am.jll.com

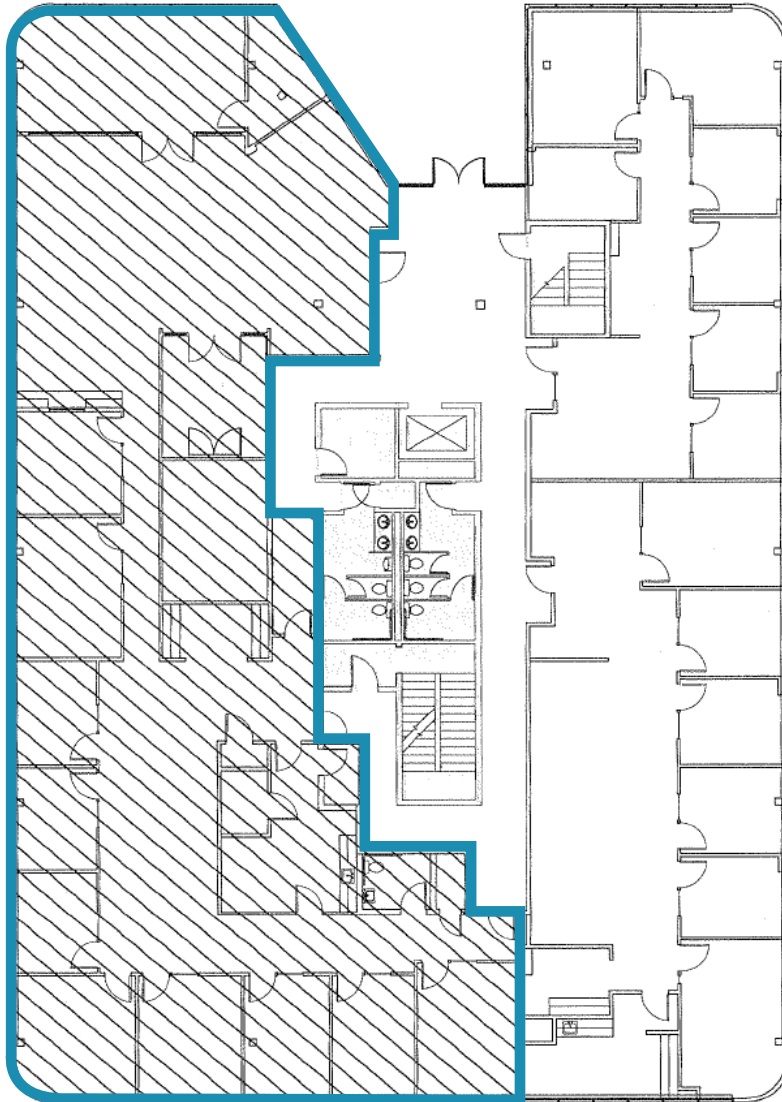
Charlie Malley
+1 206 607 1761
charlie.malley@am.jll.com

Plaza 305

305 108th Avenue NE • Bellevue, WA

Sublease Opportunity

Floor 1 | 6,125 RSF



Clay Nielsen

+1 206 521 2664

clay.nielsen@am.jll.com

Charlie Malley

+1 206 607 1761

charlie.malley@am.jll.com



DISCLAIMER

Although information has been obtained from sources deemed reliable, Owner, Jones Lang LaSalle, and/or their representatives, brokers or agents make no guarantees as to the accuracy of the information contained herein, and offer the Property without express or implied warranties of any kind. The Property may be withdrawn without notice. If the recipient of this information has signed a confidentiality agreement regarding this matter, this information is subject to the terms of that agreement. ©2016. Jones Lang LaSalle. All rights reserved.