



OFFERING MEMORANDUM

# PASCO TOWNCENTER

SR 52 & I-75, PASCO, FL

**RYAN SAMPSON, CCIM, ALC**

Principal  
D. 813.287.8787 x4  
M. 813.417.5928  
Ryan@TheDirtDog.com

**BILL ESHENBAUGH, CCIM, ALC**

President, Lic. Real Estate  
Broker  
D. 813.287.8787 x1  
M. 727.410.9595  
Bill@TheDirtDog.com

**Eshenbaugh**  
**LAND COMPANY**

Celebrating 25 Years

All materials and information received or derived from Eshenbaugh Land Company, LLC its directors, officers, agents, advisors, affiliates and/or any third party sources are provided without representation or warranty as to completeness, veracity, or accuracy, condition of the property, compliance or lack of compliance with applicable governmental requirements, developability or suitability, financial performance of the property, projected financial performance of the property for any party's intended use or any and all other matters.

Neither Eshenbaugh Land Company, LLC its directors, officers, agents, advisors, or affiliates makes any representation or warranty, express or implied, as to accuracy or completeness of the any materials or information provided, derived, or received. Materials and information from any source, whether written or verbal, that may be furnished for review are not a substitute for a party's active conduct of its own due diligence to determine these and other matters of significance to such party. Eshenbaugh Land Company, LLC will not investigate or verify any such matters or conduct due diligence for a party unless otherwise agreed in writing. EACH PARTY SHALL CONDUCT ITS OWN INDEPENDENT INVESTIGATION AND DUE DILIGENCE.

Any party contemplating or under contract or in escrow for a transaction is urged to verify all information and to conduct their own inspections and investigations including through appropriate third party independent professionals selected by such party. All financial data should be verified by the party including by obtaining and reading applicable documents and reports and consulting appropriate independent professionals. Eshenbaugh Land Company, LLC makes no warranties and/or representations

regarding the veracity, completeness, or relevance of any financial data or assumptions. Eshenbaugh Land Company, LLC does not serve as a financial advisor to any party regarding any proposed transaction. All data and assumptions regarding financial performance, including that used for financial modeling purposes, may differ from actual data or performance. Any estimates of market rents and/or projected rents that may be provided to a party do not necessarily mean that rents can be established at or increased to that level. Parties must evaluate any applicable contractual and governmental limitations as well as market conditions, vacancy factors and other issues in order to determine rents from or for the property.

Legal questions should be discussed by the party with an attorney. Tax questions should be discussed by the party with a certified public accountant or tax attorney. Title questions should be discussed by the party with a title officer or attorney. Questions regarding the condition of the property and whether the property complies with applicable governmental requirements should be discussed by the party with appropriate engineers, architects, contractors, other consultants and governmental agencies. All properties and services are marketed by Eshenbaugh Land Company, LLC in compliance with all applicable fair housing and equal opportunity laws.

Eshenbaugh Land Company is a licensed real estate brokerage firm in Florida and William A. Eshenbaugh is the broker of record.



## PROPERTY DESCRIPTION

Pasco Towncenter is an 875 acre parcel ideally situated to be the next master planned development located at the southeast corner of I-75 and SR 52 in Pasco County. The property is currently zoned agricultural and an active sod farm that could be taken through the rezoning process for a true mixed use project with office, retail, industrial and multifamily throughout the 875 acres based on the Employment Center future land use. With approximately 2 miles of frontage on I-75 and a half mile on SR 52, this property is slated to be the urban core of NE Pasco County. The site contains approximately 189 acres wetlands including wetland buffers.

## LOCATION DESCRIPTION

The parcel is located at the southeast corner of SR 52 and I-75 in Pasco County, FL. The property has over 2 miles of frontage on I-75 and McKendree Rd with over 2,500 feet of frontage on SR 52. At SR 52 and I-75, work is close to completion to vastly improve the intersection as well as a widening of SR 52 into divided 4 lanes west to Bellamy Brothers Road and east to McKendree Road, and the paving of McKendree Road south about 2 miles to the southern tip of Pasco Town Center. The property is within the Connected City overlay, but the owner has not opted into the Connected City district. A buyer has the option to either remain outside or opt-in. All utilities and roadways have been extended or enlarged surrounding the property for the benefit of Connected City which this parcel is slated to be the main employment center.

The Agency for Health Care Administration has just announced the approval of BayCare Hospital's application to build a new 60-bed hospital along the I-75 corridor in Pasco County, just south of Pasco Towncenter, due to the growing community in the surrounding area. This will be located just south of Pasco Towncenter, where a new interchange is added at Overpass Road. The new diamond interchange will include a flyover ramp for westbound Overpass Road access to south I-75.

## MUNICIPALITY

Pasco County

## PROPERTY SIZE

875.88 Acres

## FUTURE LAND USE

EC- Employment Center

## PROPERTY OWNER

Kingsley Asset Management

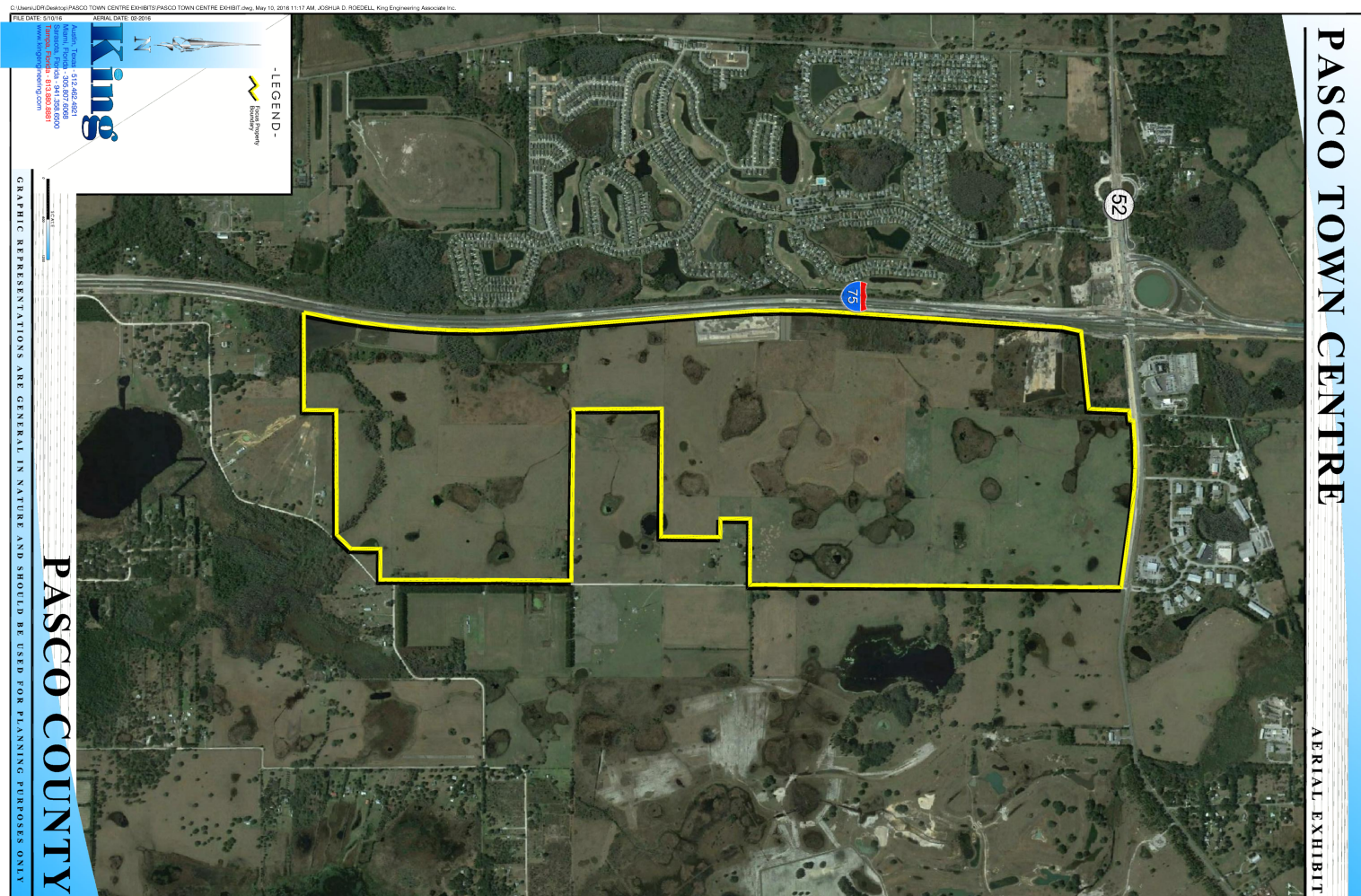
## PRICE

\$35,000,000

## BROKER CONTACT INFO

**Ryan Sampson, CCIM, ALC**  
Principal  
813.287.8787 x4  
[Ryan@TheDirtDog.com](mailto:Ryan@TheDirtDog.com)

**Bill Eshenbaugh, CCIM, ALC**  
President, Lic. Real Estate Broker  
813.287.8787 x1  
[Bill@TheDirtDog.com](mailto:Bill@TheDirtDog.com)











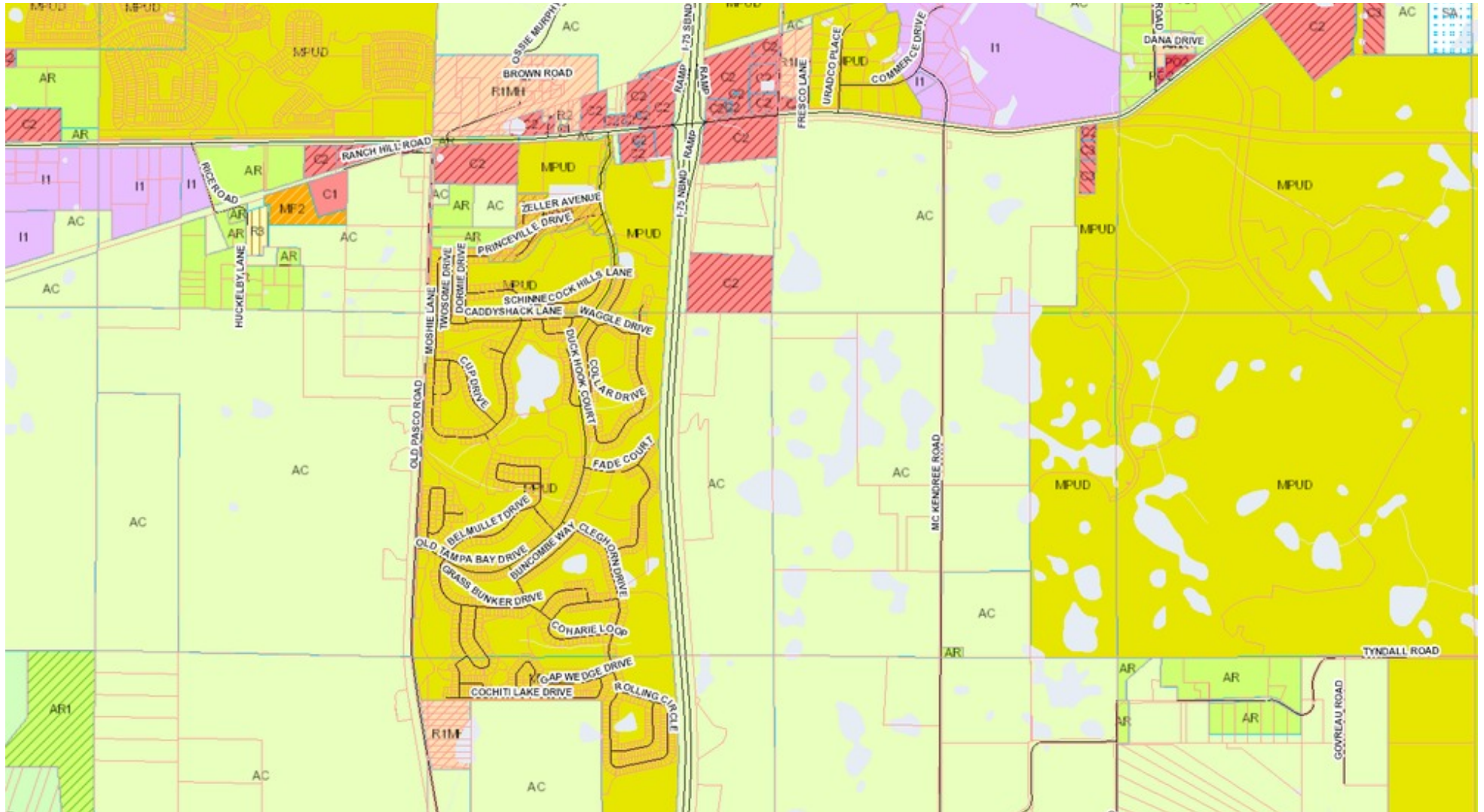




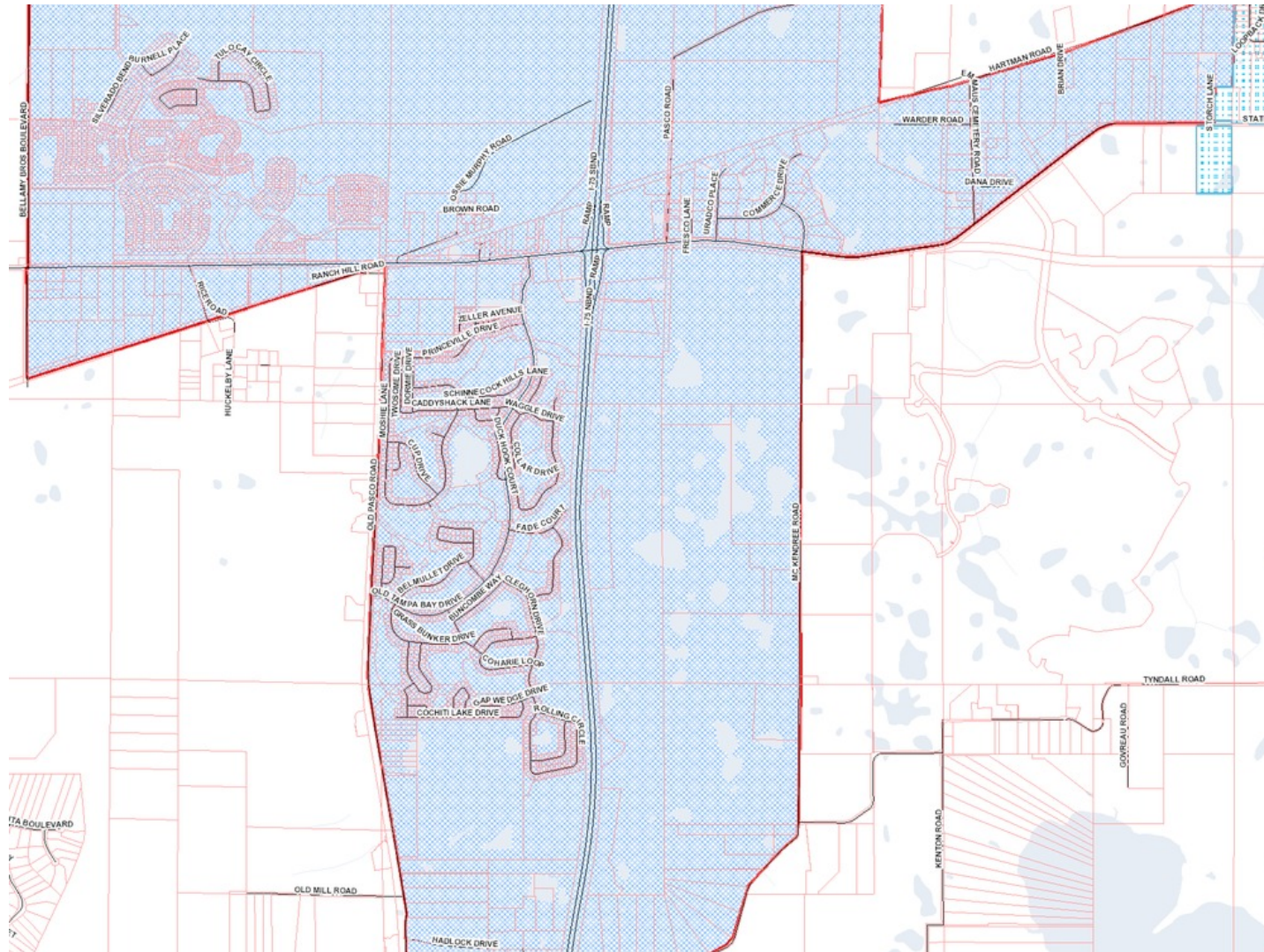




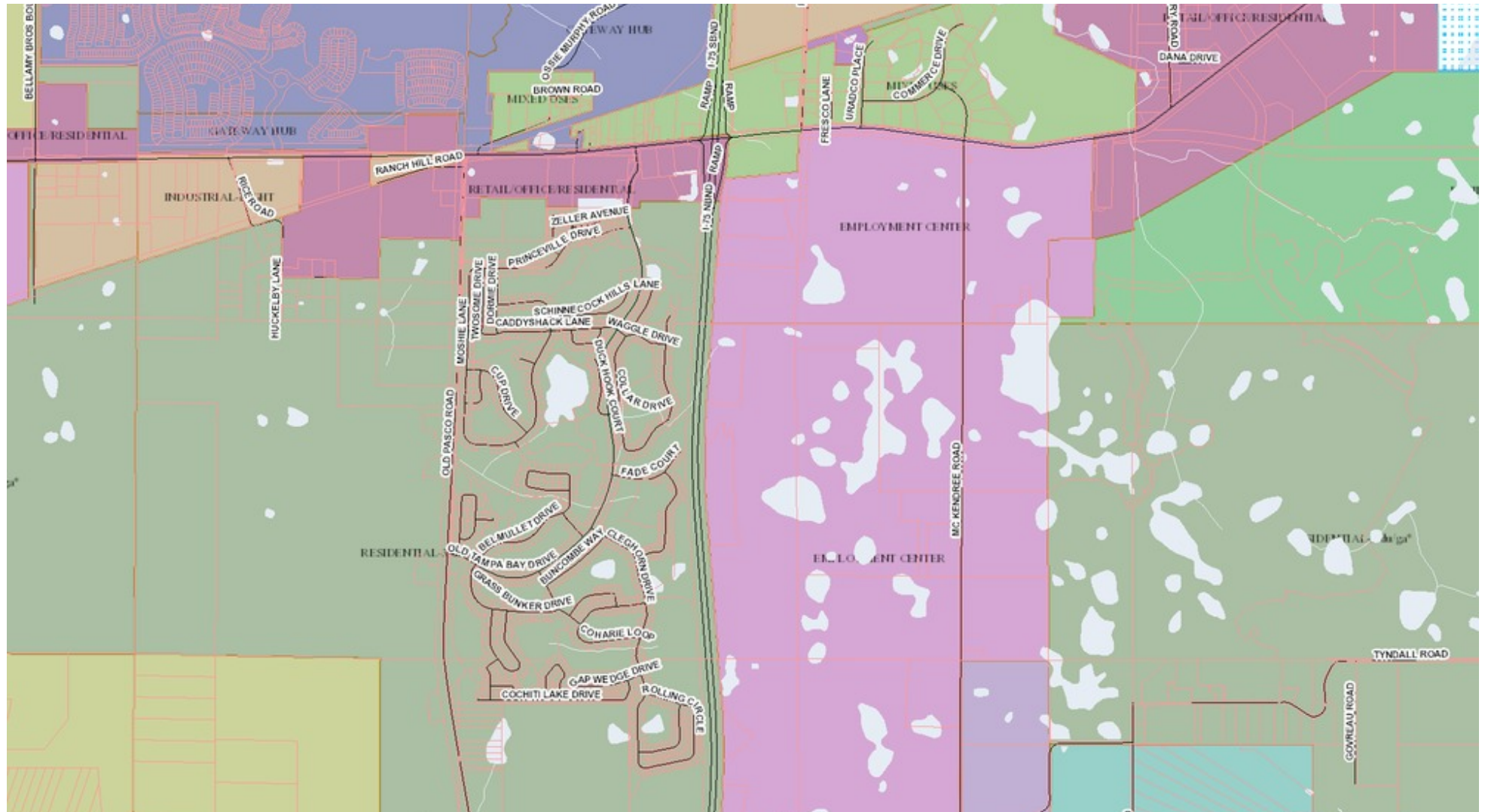




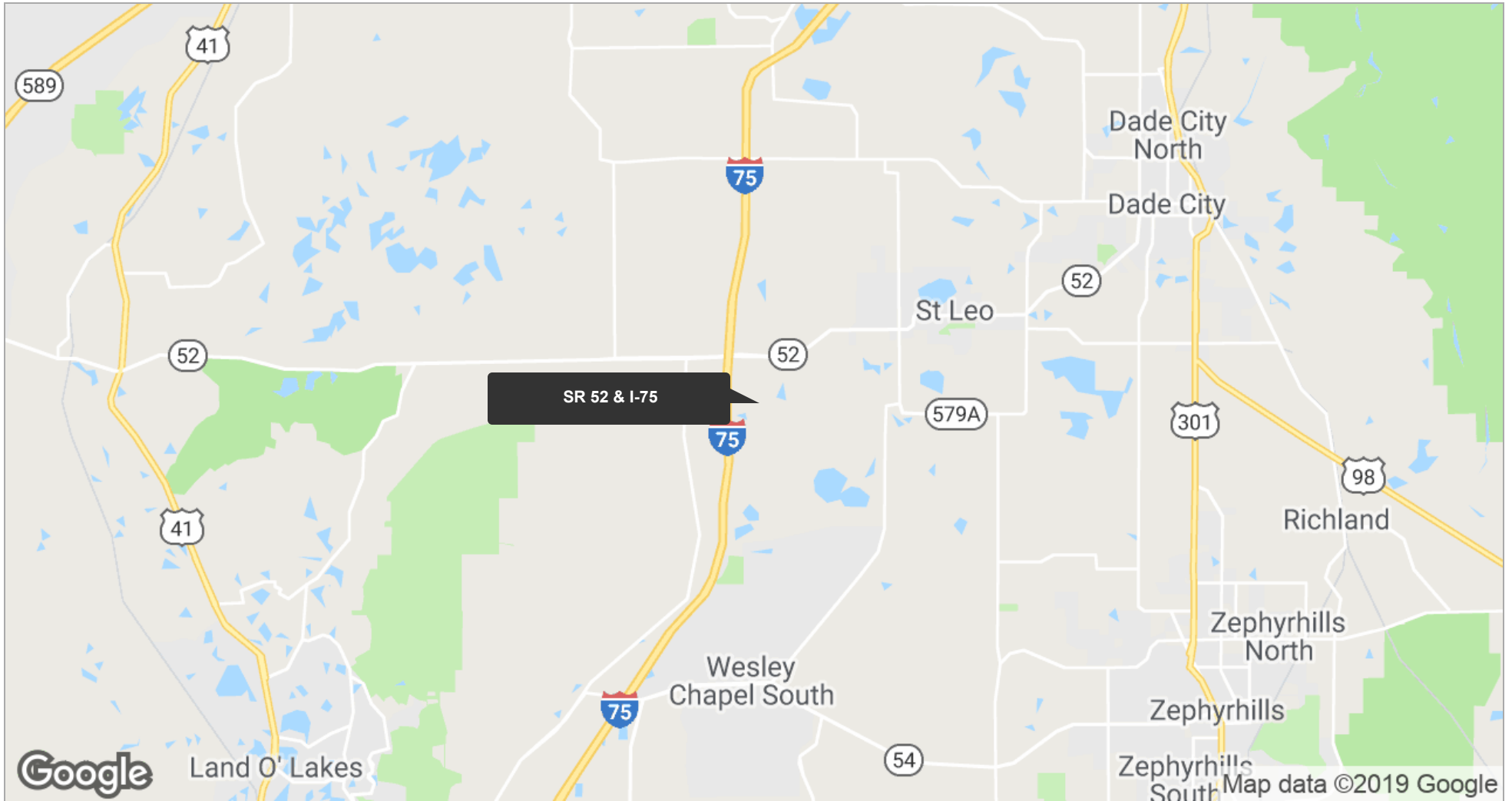
















	<b>1 Mile</b>	<b>5 Miles</b>	<b>10 Miles</b>
Total Population	900	20,960	129,435
Population Density	286	267	412
Median Age	35.5	40.6	40.5
Median Age (Male)	35.4	40.2	39.8
Median Age (Female)	35.7	41.2	41.3
Total Households	302	7,706	48,101
# of Persons Per HH	3.0	2.7	2.7
Average HH Income	\$73,994	\$77,173	\$68,989
Average House Value	\$218,743	\$251,238	\$214,965

\* Demographic data derived from 2010 US Census