

SUBLETT STATION 6521 W SUBLETT ROAD ■ ARLINGTON TX 76001

MIXED USE FACILITY - AVAILABLE FOR LEASE

Located on the major thoroughfare of Sublett Road just west of Hwy 287 in Arlington

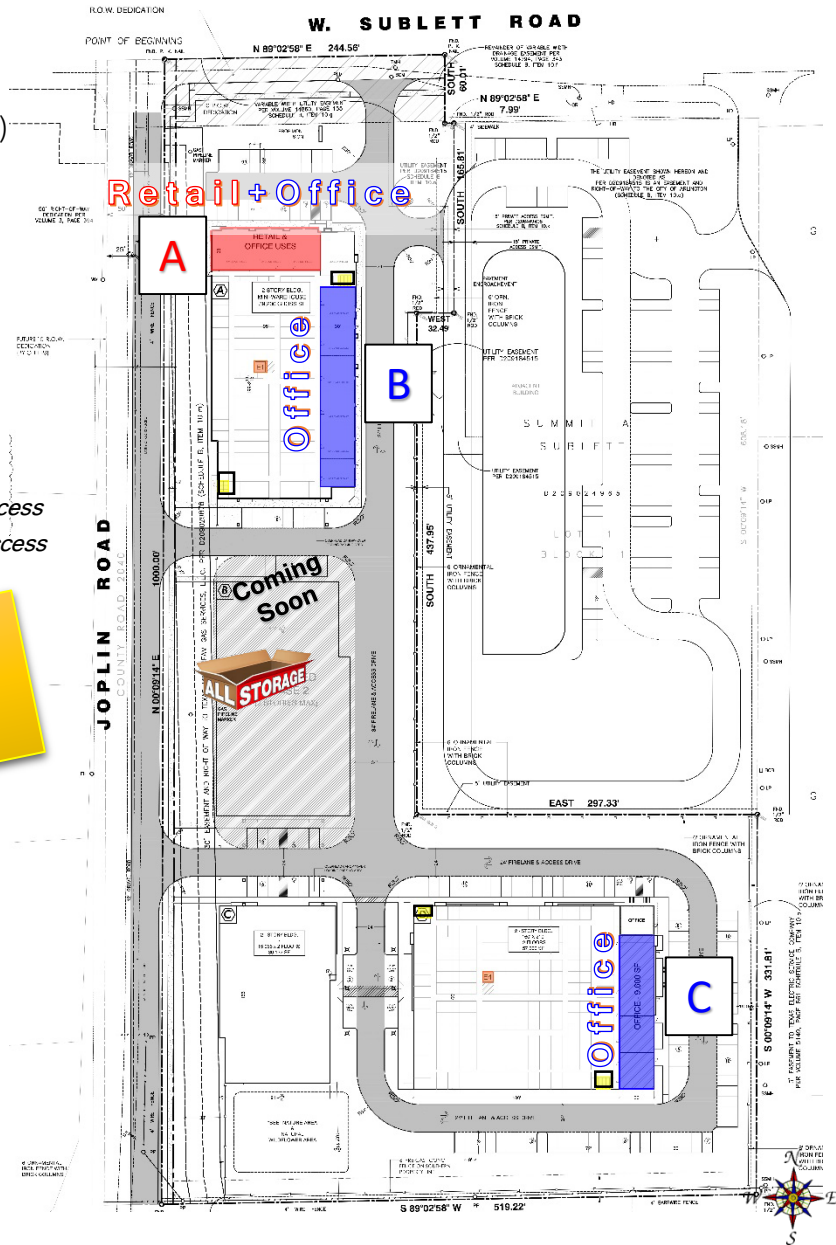
- A** ■ **RETAIL** - ± 3,435 SF - Facing Sublett Rd (100'x35')
- A** ■ **OFFICE** - ± 5,243 SF - Facing Sublett Rd
2ND FLOOR
- B** ■ **OFFICE** - ± 5,242 SF 1st Floor (175'x30')
± 5,242 SF 2nd Floor
- C** ■ **OFFICE** - ± 4,800 SF 1st Floor (160'x30')
± 4,800 SF 2nd Floor
- 2nd Floor has elevator & stairway access

ZONED

“CC” - Community Commercial

| Traffic Counts 2015 ± | (per CoStar) |
|-----------------------|--------------|
| Hwy 287 | 64,430 |
| Sublett Rd | 21,742 |

| Demographics 2018 | 1 mi | 3 mi | 5 mi |
|-------------------|--------|---------|---------|
| Population | 11,292 | 72,577 | 203,506 |
| Avg HH Income \$ | 95,499 | 108,614 | 100,158 |
| Households | 4,070 | 26,584 | 71,857 |



For more information, contact:

Quine & Associates, Inc.
Texas Real Estate Broker

Brad Quine
Texas Real Estate Broker
bquine@quine.com

The information contained herein was obtained from sources believed reliable; however, Quine & Associates, Inc. makes no guarantees, warranties or representation as to the completeness or accuracy thereof. The presentation of the property is submitted subject to errors, omissions, change of price or conditions prior to sale or lease or withdrawal without notice.

SUBLETT STATION 6521 W SUBLETT ROAD ■ ARLINGTON TX 76001

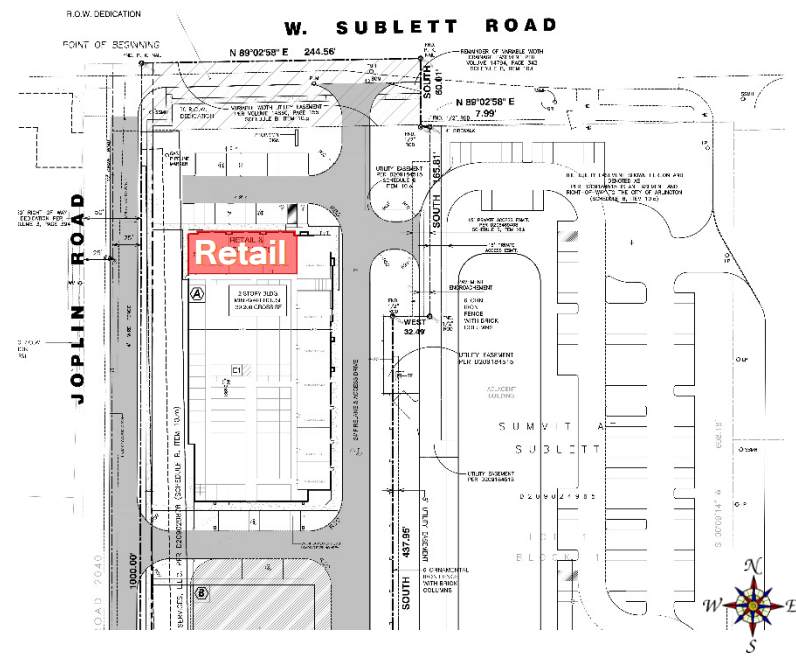
RETAIL SPACE AVAILABLE - FOR LEASE

Retail Rendering



- **RETAIL:** ± 3,435 SF - Facing Sublett Rd (100'x35')
- 3 Spaces - ± 1,145 Square Feet
- ± 30' frontage on Sublett Road
- Aluminum & Glass Storefront
- Signage on Storefront ± 3'x12'
- Can Combine
- **ZONED**
- “CC” - Community Commercial

**COMING
SOON
NOW
LEASING**



For more information, contact:
Quine & Associates, Inc.
Texas Real Estate Broker

Brad Quine
Texas Real Estate Broker
bquine@quine.com

The information contained herein was obtained from sources believed reliable; however, Quine & Associates, Inc. makes no guarantees, warranties or representation as to the completeness or accuracy thereof. The presentation of the property is submitted subject to errors, omissions, change of price or conditions prior to sale or lease or withdrawal without notice.

SUBLETT STATION 6521 W SUBLETT ROAD ■ ARLINGTON TX 76001

OFFICE SPACE AVAILABLE - FOR LEASE

Office Rendering



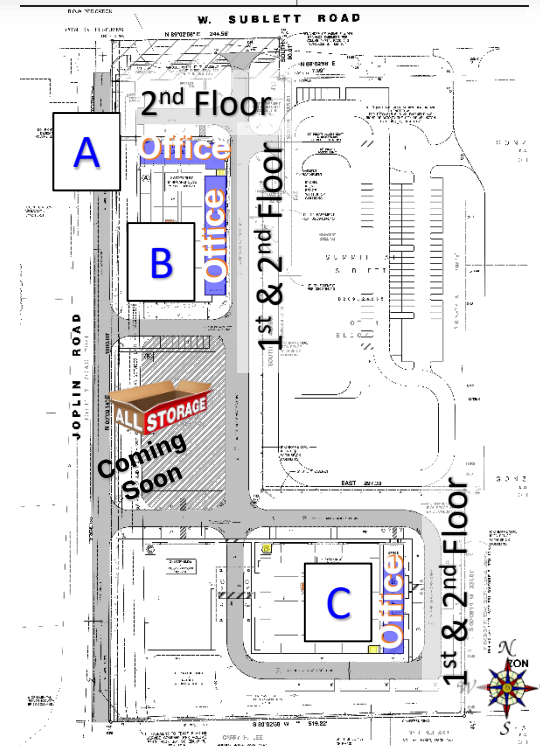
- **A - OFFICE** - ± 5,243 SF - Facing Sublett Rd
2ND FLOOR
- **B - OFFICE** - ± 10,484 SF 1st Floor & 2nd Floor
(175'x30')
- **C - OFFICE** - ± 9,600 SF 1st Floor & 2nd Floor
(160'x30')
- 2nd Floor has elevator & stairway access

ZONED

“CC” - Community Commercial



- Elevator Access
- Stairway Access



For more information, contact:

Quine & Associates, Inc.
Texas Real Estate Broker

Brad Quine
Texas Real Estate Broker
bquine@quine.com

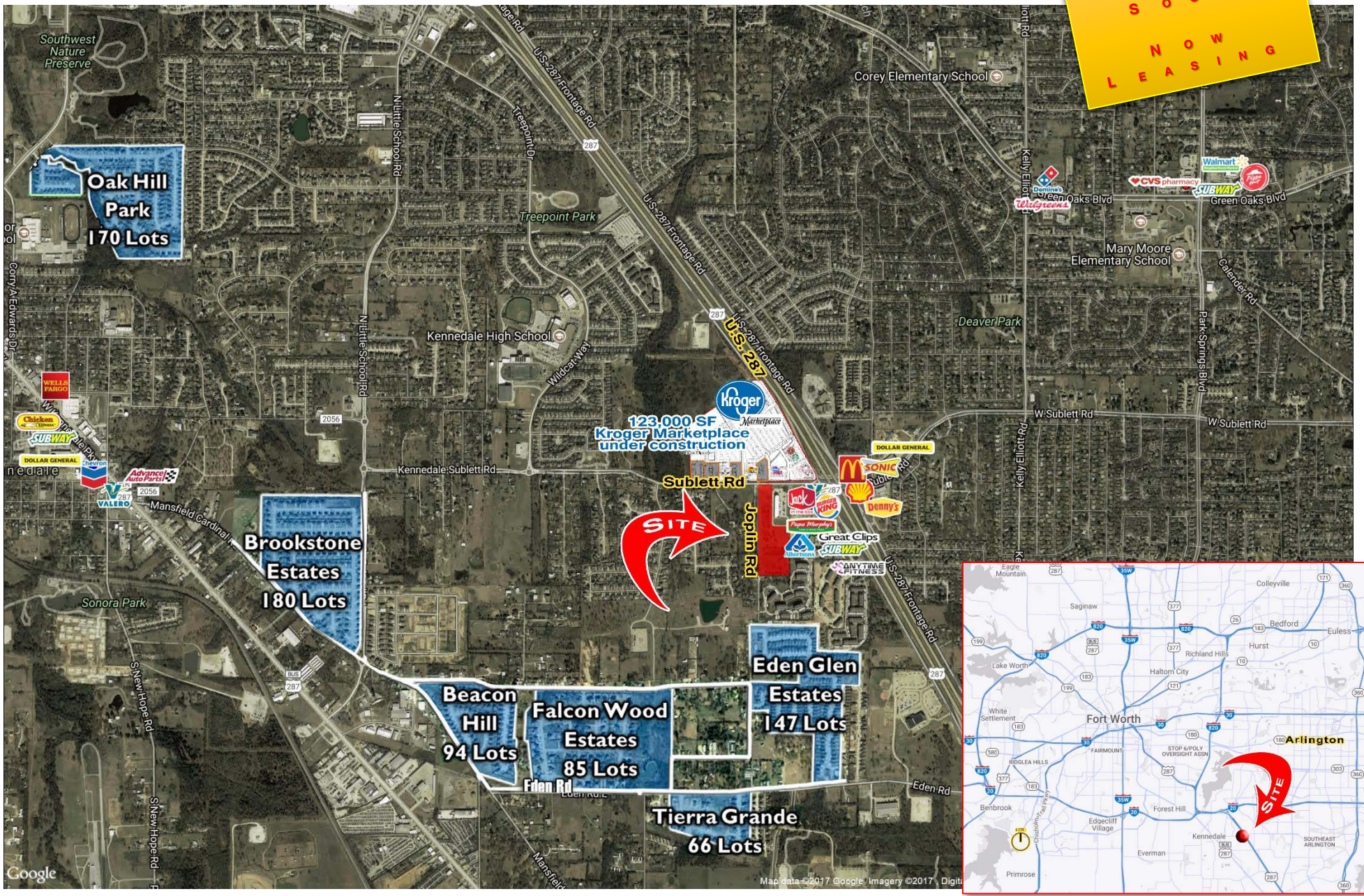
Quine & Associates, Inc. ■ 301 S Sherman St. #100 ■ Richardson TX 75081 ■ 972.669.8440 ■ www.quine.com

The information contained herein was obtained from sources believed reliable; however, Quine & Associates, Inc. makes no guarantees, warranties or representation as to the completeness or accuracy thereof. The presentation of the property is submitted subject to errors, omissions, change of price or conditions prior to sale or lease or withdrawal without notice.

SUBLETT STATION 6521 W SUBLETT ROAD ■ ARLINGTON TX 76001

MIXED USE FACILITY

COMING
SOON
LEASING



Quine & Associates, Inc. ■ 301 S Sherman St. #100 ■ Richardson TX 75081 ■ 972.669.8440 ■ www.quine.com

The information contained herein was obtained from sources believed reliable; however, Quine & Associates, Inc. makes no guarantees, warranties or representation as to the completeness or accuracy thereof. The presentation of the property is submitted subject to errors, omissions, change of price or conditions prior to sale or lease or withdrawal without notice.



Information About Brokerage Services

Texas law requires all real estate license holders to give the following information about brokerage services to prospective buyers, tenants, sellers and landlords.

TYPES OF REAL ESTATE LICENSE HOLDERS:

- **A BROKER** is responsible for all brokerage activities, including acts performed by sales agents sponsored by the broker.
- **A SALES AGENT** must be sponsored by a broker and works with clients on behalf of the broker.

A BROKER'S MINIMUM DUTIES REQUIRED BY LAW (A client is the person or party that the broker represents):

- Put the interests of the client above all others, including the broker's own interests;
- Inform the client of any material information about the property or transaction received by the broker;
- Answer the client's questions and present any offer to or counter-offer from the client; and
- Treat all parties to a real estate transaction honestly and fairly.

A LICENSE HOLDER CAN REPRESENT A PARTY IN A REAL ESTATE TRANSACTION:

AS AGENT FOR OWNER (SELLER/LANDLORD): The broker becomes the property owner's agent through an agreement with the owner, usually in a written listing to sell or property management agreement. An owner's agent must perform the broker's minimum duties above and must inform the owner of any material information about the property or transaction known by the agent, including information disclosed to the agent or subagent by the buyer or buyer's agent.

AS AGENT FOR BUYER/TENANT: The broker becomes the buyer/tenant's agent by agreeing to represent the buyer, usually through a written representation agreement. A buyer's agent must perform the broker's minimum duties above and must inform the buyer of any material information about the property or transaction known by the agent, including information disclosed to the agent by the seller or seller's agent.

AS AGENT FOR BOTH - INTERMEDIARY: To act as an intermediary between the parties the broker must first obtain the written agreement of *each party* to the transaction. The written agreement must state who will pay the broker and, in conspicuous bold or underlined print, set forth the broker's obligations as an intermediary. A broker who acts as an intermediary:

- Must treat all parties to the transaction impartially and fairly;
- May, with the parties' written consent, appoint a different license holder associated with the broker to each party (owner and buyer) to communicate with, provide opinions and advice to, and carry out the instructions of each party to the transaction.
- Must not, unless specifically authorized in writing to do so by the party, disclose:
 - that the owner will accept a price less than the written asking price;
 - that the buyer/tenant will pay a price greater than the price submitted in a written offer; and
 - any confidential information or any other information that a party specifically instructs the broker in writing not to disclose, unless required to do so by law.

AS SUBAGENT: A license holder acts as a subagent when aiding a buyer in a transaction without an agreement to represent the buyer. A subagent can assist the buyer but does not represent the buyer and must place the interests of the owner first.

TO AVOID DISPUTES, ALL AGREEMENTS BETWEEN YOU AND A BROKER SHOULD BE IN WRITING AND CLEARLY ESTABLISH:

- The broker's duties and responsibilities to you, and your obligations under the representation agreement.
- Who will pay the broker for services provided to you, when payment will be made and how the payment will be calculated.

LICENSE HOLDER CONTACT INFORMATION: This notice is being provided for information purposes. It does not create an obligation for you to use the broker's services. Please acknowledge receipt of this notice below and retain a copy for your records.

| | | | |
|--|-------------|------------------|--------------|
| Quine & Associates, Inc. | 376571 | retail@quine.com | 972.669.8440 |
| Licensed Broker /Broker Firm Name or Primary Assumed Business Name | License No. | Email | Phone |
| Coy Quine | 199900 | cquine@quine.com | 972.669.8440 |
| Designated Broker of Firm | License No. | Email | Phone |
| Brad Quine | 381719 | bquine@quine.com | 972.669.8440 |
| Licensed Supervisor of Sales Agent/ Associate | License No. | Email | Phone |
| | | | 972.669.8440 |
| Sales Agent/Associate's Name | License No. | Email | Phone |

Buyer/Tenant/Seller/Landlord Initials

Date