

# FOR SALE

4298 Hwy 27, Lancaster KY 40444

\$297,500

## Property Details

Total Size:	Approx 31 AC <i>(Call for pricing per parcel)</i>
Property Type:	Residential Land or Commercial Land



Beautiful acreage located in Lancaster, KY with great access from Hwy 27. This property can be divided into residential or commercial parcels and offers frontage to Hwy 27. The property has been extremely well maintained and is ready for development.



**LAURA ADAMS**

**859-333-6024**

ladams@schradercommercial.com

444 E Main Street, Suite 110  
PO Box 21793 Lexington, KY 40522

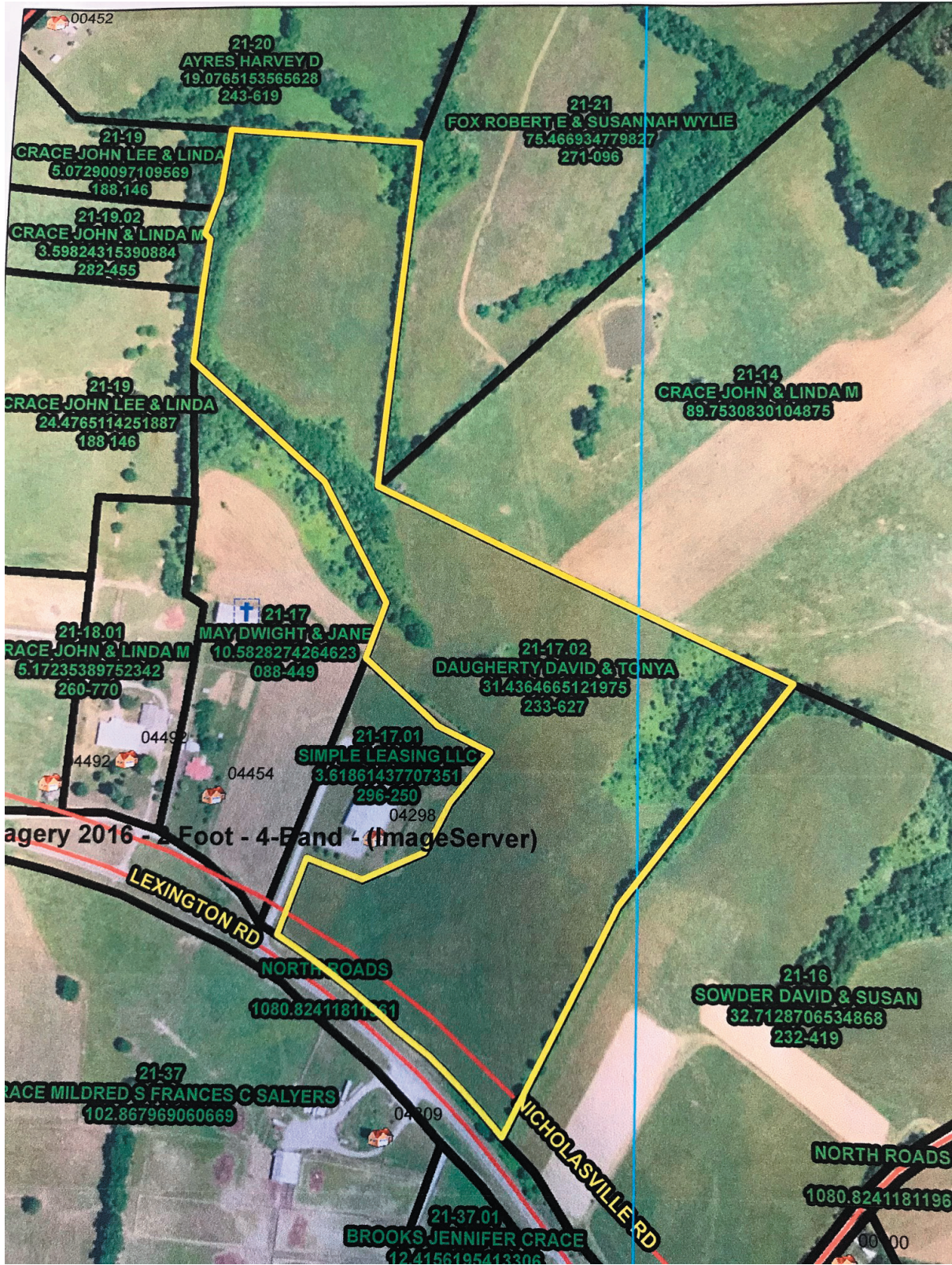
**SCHRADER**  
COMMERCIAL PROPERTIES, LLC

859-288-5008 / [schradercommercial.com](http://schradercommercial.com)

The information contained herein is from sources believed, but not guaranteed to be reliable. Schrader Commercial Properties, LLC makes no representations or warranties regarding the property and you should conduct a careful independent investigation of the property to determine its suitability for your use and investment.



# Aerial





# Property Photos

