

19380 ALLEN ROAD  
BROWNSTOWN TWP., MICHIGAN

RETAIL FOR SALE OR LEASE  
6,313 Square Feet Available



**SIGNATURE  
ASSOCIATES**  
KNOW SIGNATURE | KNOW RESULTS

**DRINKS SALOON RESTAURANT**



## PROPERTY FEATURES

- 6,313 available square feet
- Zoned B-3
- 86 parking spaces
- Lease Rate: TBD
- Sale Price: TBD

**Comments:** For Sale/Lease/Build-to-Suit. Many possibilities available. Can be combined with 19366 Allen Road for up to 6.4 acres and 20,313 square feet.



For more information, please contact:

**JUSTIN GAFFREY**  
(248) 799 3143  
jgaffrey@signatureassociates.com

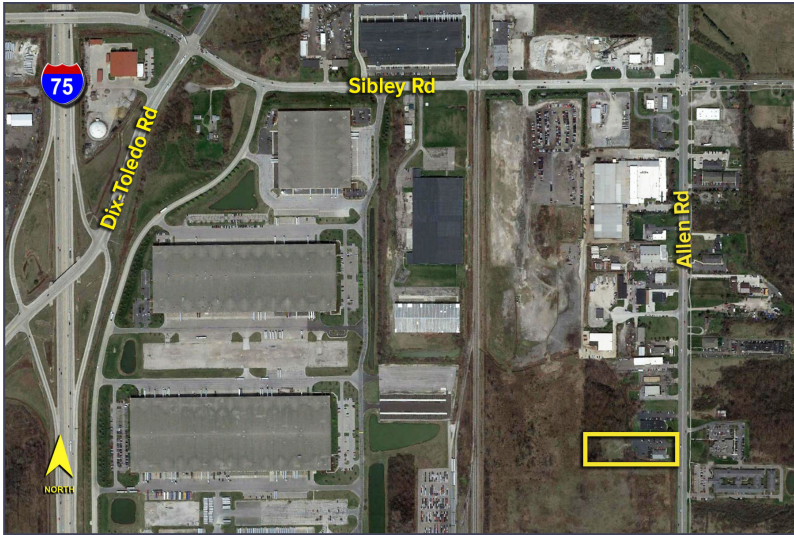
**SIGNATURE ASSOCIATES**  
One Towne Square, Suite 1200  
Southfield, MI 48076  
www.signatureassociates.com



# 19380 Allen Road – Brownstown Twp., Michigan

## Retail For Sale or Lease

6,313  
Square Feet  
AVAILABLE

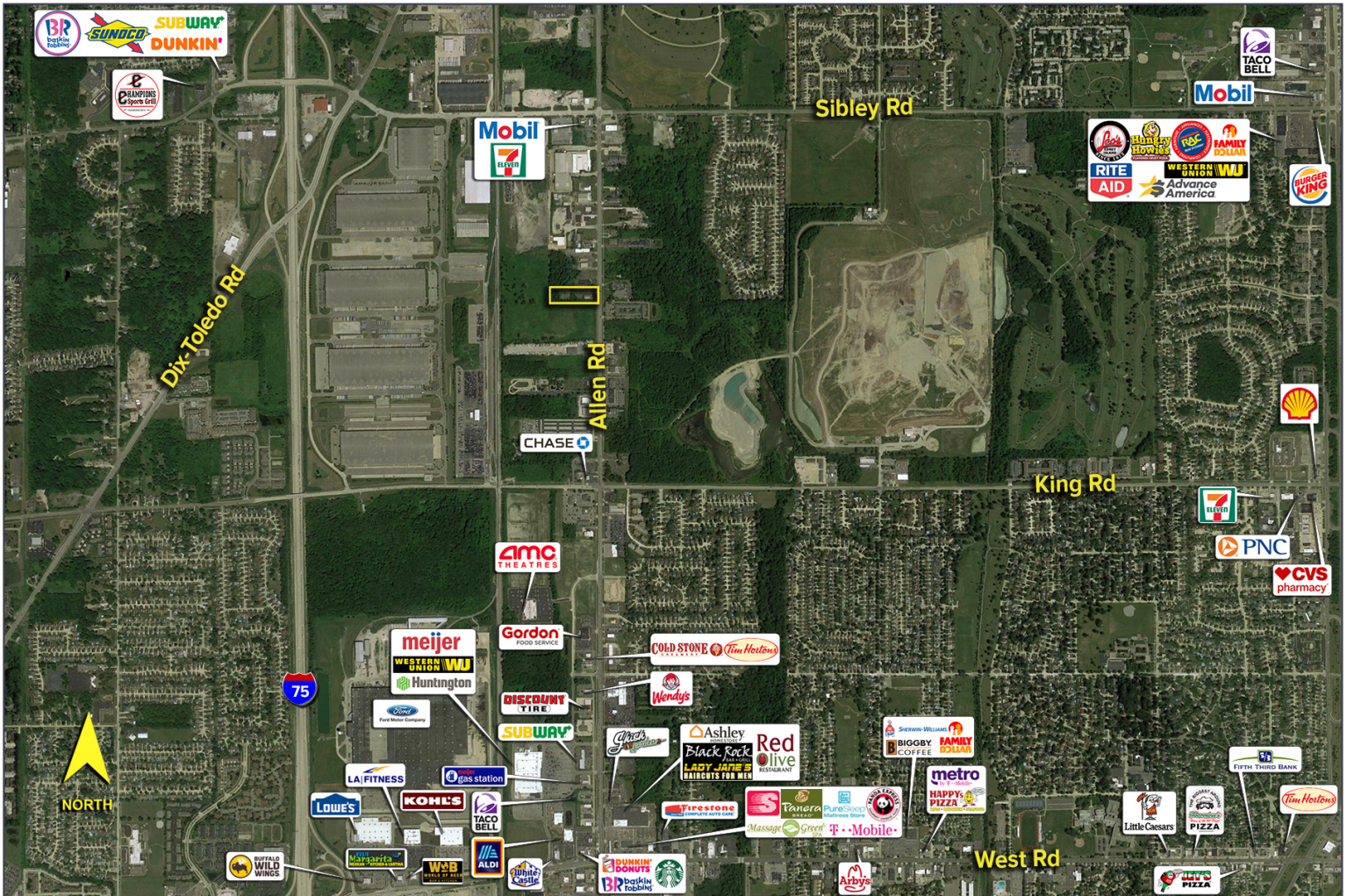


### DEMOGRAPHICS

	POPULATION	MED. HH INCOME
1 MILE	2,706	\$73,503
3 MILE	64,041	\$62,508
5 MILE	163,594	\$63,369

### TRAFFIC COUNTS (TWO-WAY)

18,901	Allen Rd. N. of Sibley Rd. 2-Way
30,325	Allen Rd. S. of Sibley Rd. 2-Way
14,724	Sibley Rd. W. of Allen Rd. 2-Way
16,216	Sibley Rd. E. Allen Rd. 2-Way



For more information, please contact:

**JUSTIN GAFFREY**  
(248) 799 3143  
jgaffrey@signatureassociates.com

**SIGNATURE ASSOCIATES**  
One Towne Square, Suite 1200  
Southfield, MI 48076  
www.signatureassociates.com

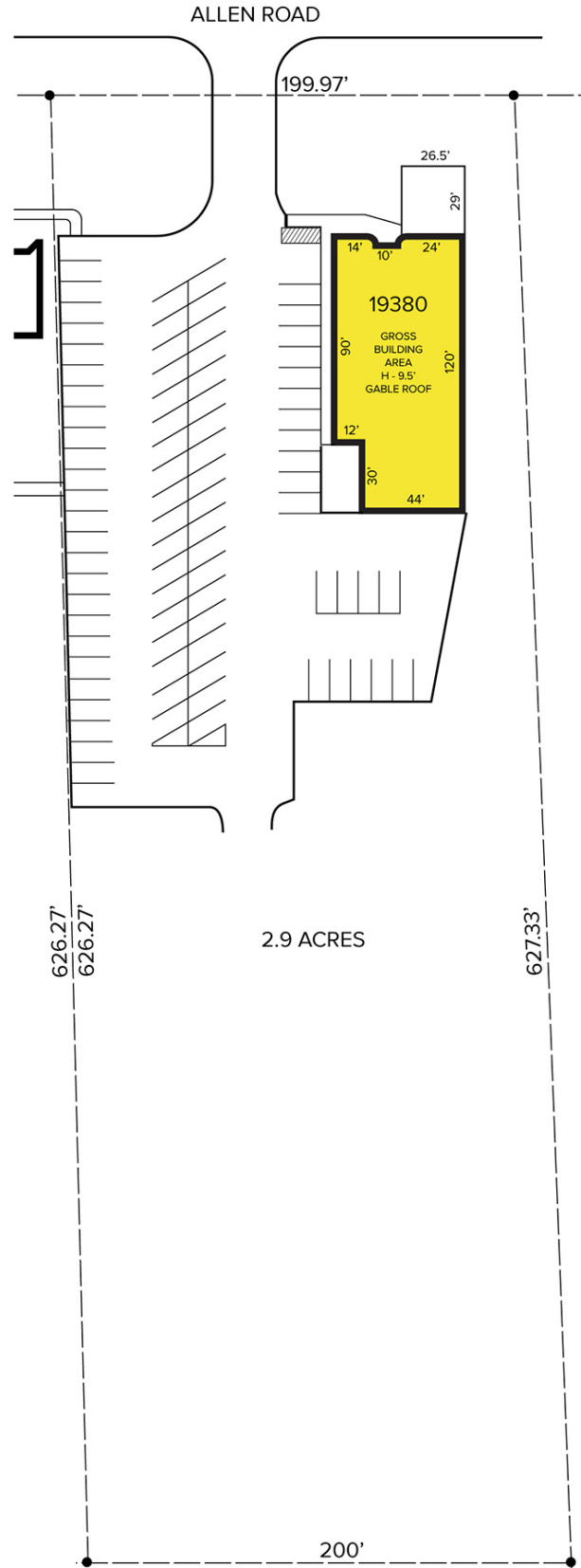


# 19380 Allen Road – Brownstown Twp., Michigan

Retail For Sale or Lease

6,313  
Square Feet  
AVAILABLE

## Site Plan



For more information, please contact:

**JUSTIN GAFFREY**  
(248) 799 3143  
jgaffrey@signatureassociates.com

**SIGNATURE ASSOCIATES**  
One Towne Square, Suite 1200  
Southfield, MI 48076  
www.signatureassociates.com