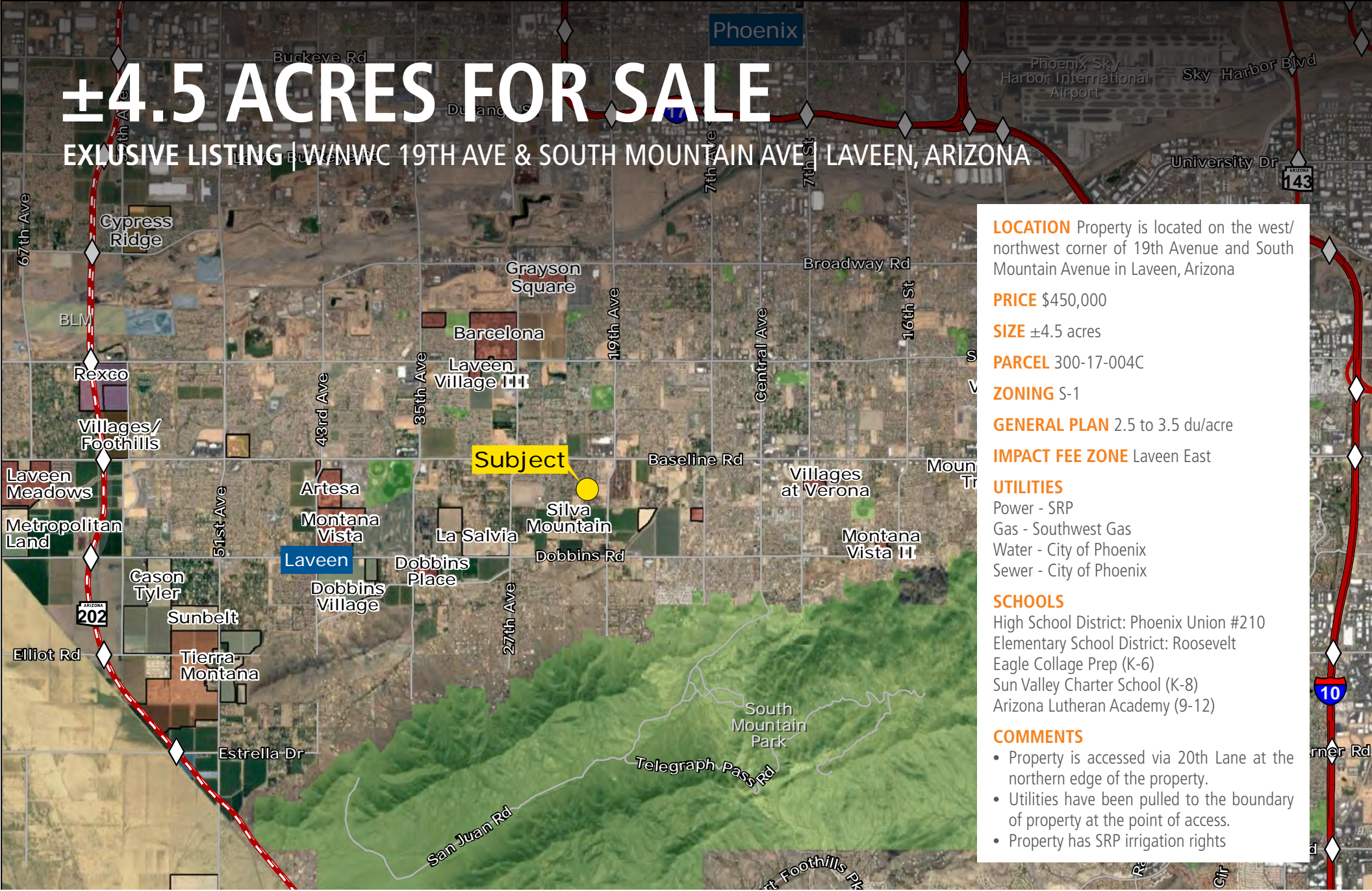


±4.5 ACRES FOR SALE

EXCLUSIVE LISTING | WINWC 19TH AVE & SOUTH MOUNTAIN AVE, LAVEEN, ARIZONA



LOCATION Property is located on the west/northwest corner of 19th Avenue and South Mountain Avenue in Laveen, Arizona

PRICE \$450,000

SIZE ±4.5 acres

PARCEL 300-17-004C

ZONING S-1

GENERAL PLAN 2.5 to 3.5 du/acre

IMPACT FEE ZONE Laveen East

UTILITIES

Power - SRP
Gas - Southwest Gas
Water - City of Phoenix
Sewer - City of Phoenix

SCHOOLS

High School District: Phoenix Union #210
Elementary School District: Roosevelt
Eagle Collage Prep (K-6)
Sun Valley Charter School (K-8)
Arizona Lutheran Academy (9-12)

COMMENTS

- Property is accessed via 20th Lane at the northern edge of the property.
- Utilities have been pulled to the boundary of property at the point of access.
- Property has SRP irrigation rights

Greg Vogel | gvogel@landadvisors.com Bret Rinehart | brinehart@landadvisors.com
Ryan Semro | rsemro@landadvisors.com Wes Campbell | wcampbell@landadvisors.com
4900 North Scottsdale Road, Suite 3000, Scottsdale, Arizona 85251 ph. 480.483.8100 | www.landadvisors.com

The information contained herein is from sources deemed reliable. We have no reason to doubt its accuracy but do not guarantee it. It is the responsibility of the person reviewing this information to independently verify it. This package is subject to change, prior sale or complete withdrawal. AZWP01289-1.24.18

4.5 ACRES W/NWC S 19TH AVE AND W SOUTH MOUNTAIN AVE PROPERTY DETAIL MAP

Greg Vogel | Bret Rinehart | Ryan Semro | Wes Campbell | 480.483.8100 | www.landadvisors.com



4.5 ACRES W/NWC S 19TH AVE AND W SOUTH MOUNTAIN AVE OBLIQUE MAP

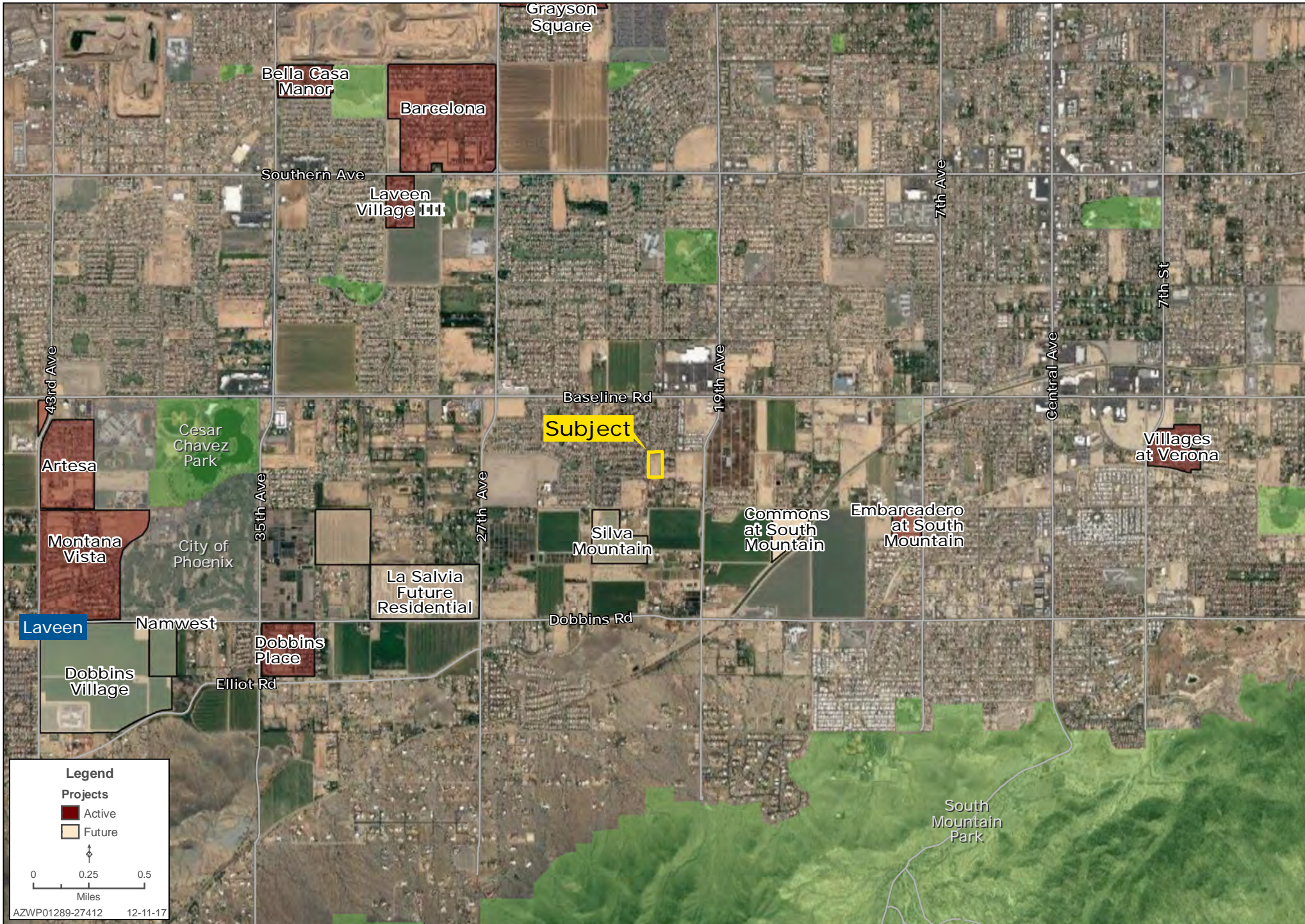
Greg Vogel | Bret Rinehart | Ryan Semro | Wes Campbell | 480.483.8100 | www.landadvisors.com



AZWP01289-27412 12-11-17

4.5 ACRES W/NWC S 19TH AVE AND W SOUTH MOUNTAIN AVE SURROUNDING AREA MAP

Greg Vogel | Bret Rinehart | Ryan Semro | Wes Campbell | 480.483.8100 | www.landadvisors.com



4.5 ACRES W/NWC S 19TH AVE AND W SOUTH MOUNTAIN AVE SURROUNDING DEVELOPMENT MAP

Greg Vogel | Bret Rinehart | Ryan Semro | Wes Campbell | 480.483.8100 | www.landadvisors.com

