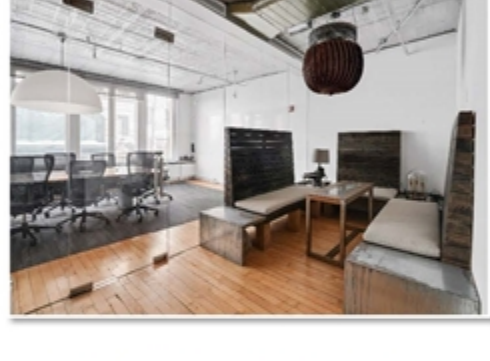


# 18 EAST 16<sup>TH</sup> STREET



NEWMARK



AREA:	Entire 4 <sup>th</sup> Floor: 7,800 RSF Entire 2 <sup>nd</sup> Floor: 7,800 RSF
POSSESSION:	Immediate
TERMS:	Negotiable
RENT:	Upon Request

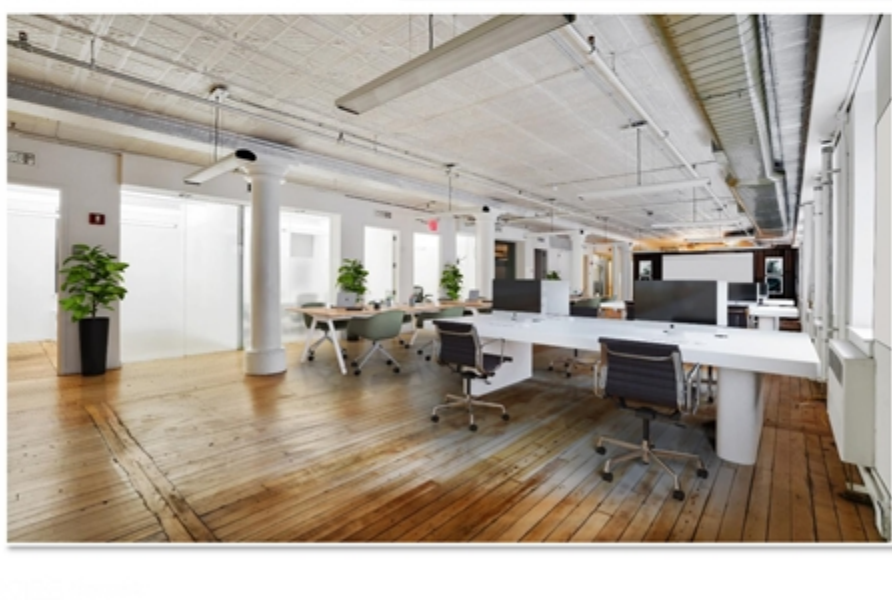
## PROPERTY HIGHLIGHTS

- Creative, built spaces, with a mix of offices/meeting rooms and open spaces
- Hardwood floors and exposed ceilings
- Great light from windows on multiple sides
- Ideal access to major subway lines at Union Square
- First class ownership and management

18 EAST  
16<sup>TH</sup>  
STREET

NEWMARK

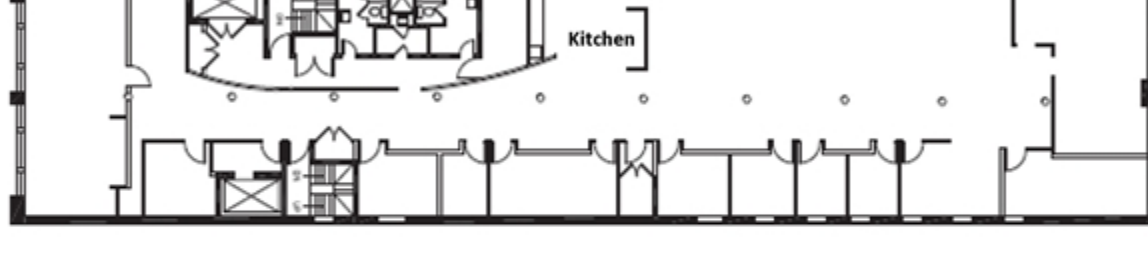
## Entire 2<sup>nd</sup> Floor



18 EAST  
16<sup>TH</sup>  
STREET

## FLOOR PLANS 7,800 RSF each

Entire 2<sup>nd</sup> Floor:



Entire 4<sup>th</sup> Floor:



18 EAST  
16<sup>TH</sup>  
STREET

NEWMARK

## Entire 4<sup>th</sup> Floor



[Click Here for Virtual Tour](#)

18 EAST  
16<sup>TH</sup>  
STREET



# 18 EAST 16<sup>TH</sup> STREET



Owen Reda  
212-850-5457  
[Owen.Reda@nrmk.com](mailto:Owen.Reda@nrmk.com)

Anthony Sciacca  
212-372-2086  
[Anthony.Sciacca@nrmk.com](mailto:Anthony.Sciacca@nrmk.com)

Robert Silver  
212-372-2005  
[Robert.Silver@nrmk.com](mailto:Robert.Silver@nrmk.com)

NEWMARK

[DOWNLOAD BROCHURE](#)