

FOR LEASE

Office/Retail Building

817 Main Street
Allegheny County
Pittsburgh PA 15215

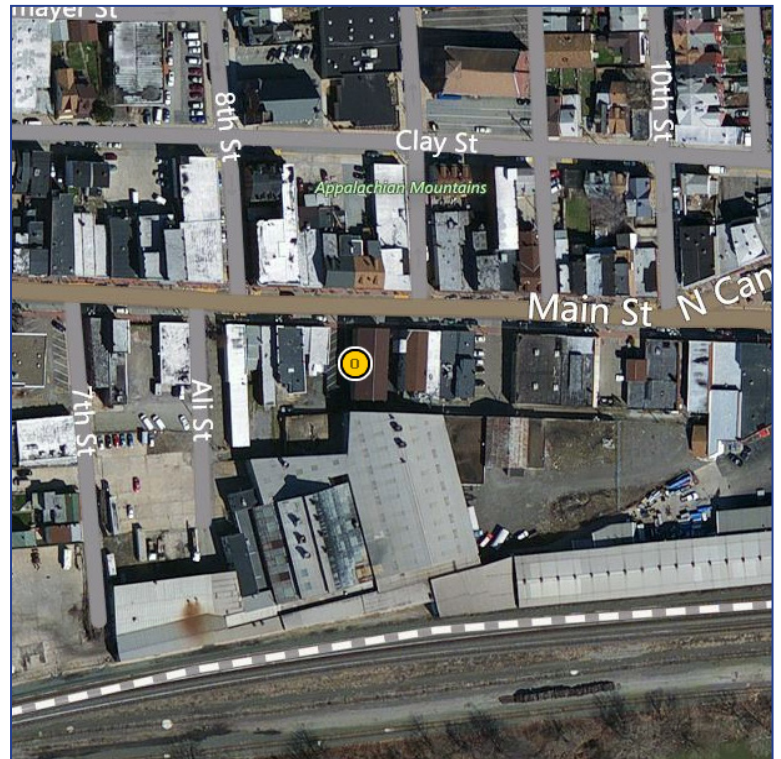


Features:

- Two-Story Stucco Office/Retail Building
- Size of Building: 5,780+/- Square Feet
Available: 2,112+/- Square Feet-1st Floor
- Parking: Adjacent Paved Parking Lot
- Zoned: Business District
- Security/Fire System
- Located minutes from Rt. 28 & PA Turnpike
- Lease Price: \$12.00 per square foot + all utilities + janitorial

DEMOGRAPHICS

	1 Mile	3 Mile	5 Mile
2016 Population	11,216	101,464	280,555
Median HH Income	\$47,405	\$46,568	\$44,907



CONTACT:
David Hanley
Broker
412.261.6532 x237
david@prudentialrealty.com

PRC Commercial
3700 South Water Street
Suite 105
Pittsburgh, PA 15203
www.prudentialrealty.com

All information furnished regarding this property for sale, rental, or financing is from sources deemed reliable but no warranty or representation is made as to the accuracy thereof and same is submitted subject to errors, omissions, change of price, rental or other conditions prior to sale, lease, or financing or withdrawal without notice. PRC Commercial will make no representation and assume no obligation regarding the presence or absence of toxic or hazardous waste or substances or other undesirable material on or about the property which will ultimately be leased or purchased.