

UPPER EAST
SIDE

NEW YORK
NY

1020
MADISON
AVENUE



CONCEPTUAL RENDERING

SPACE DETAILS

LOCATION

West block between East 78th and 79th Streets

APPROXIMATE SIZE

Ground Floor	1,920 SF
Second Floor	1,920 SF
Basement	1,200 SF
Total	5,040 SF

FRONTAGE

31 FT on Madison Avenue

TERM

Negotiable

POSSESSION

February 1, 2020

SITE STATUS

Currently Lilly Pulitzer

NEIGHBORS

Christian Louboutin, Vince, Vera Wang, Monica Vinader, Zadig & Voltaire, Mariko, Intermix, Vilebrequin, Sant Ambroeus, The Mark Hotel, Davide Cenci, The Mark Restaurant by Jean-Georges and J.Crew

COMMENTS

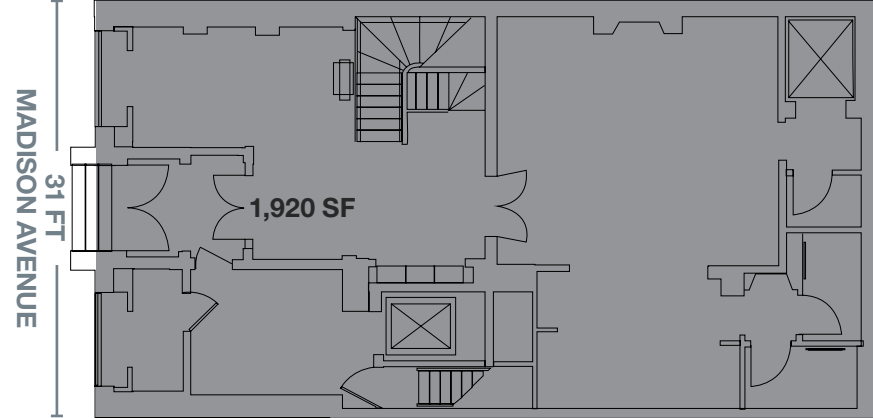
Multi-level flagship opportunity

Tremendous visibility with two flags and an awning that extends to the street

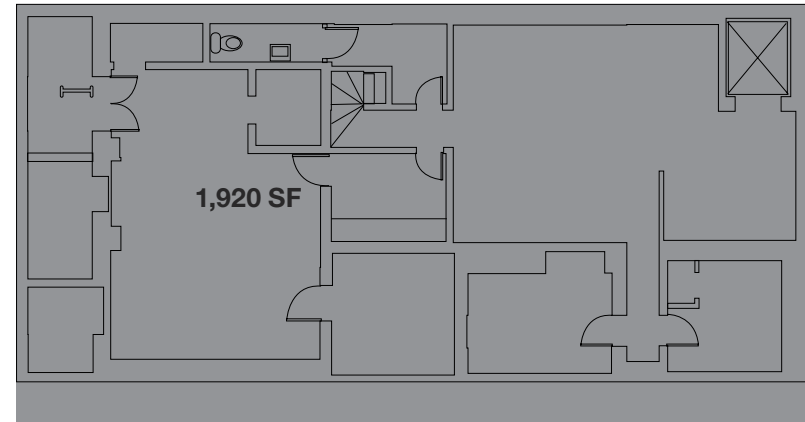
Ability to lease Ground Floor separate from Second Floor

Located on high-profile block with strong area co-tenancy

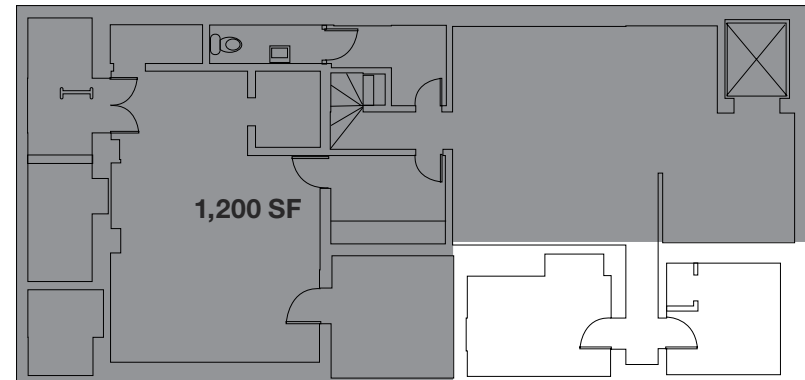
GROUND FLOOR



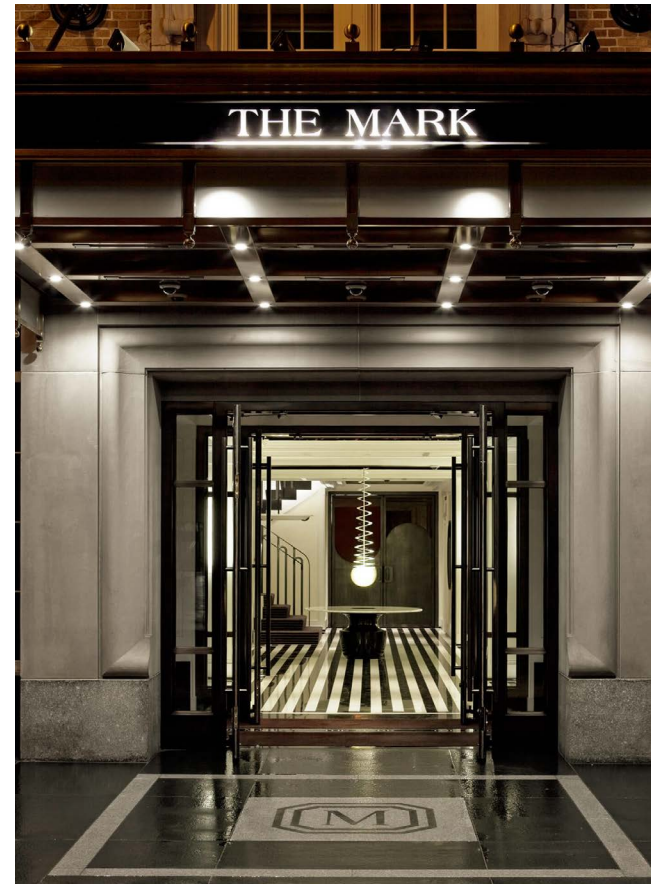
SECOND FLOOR



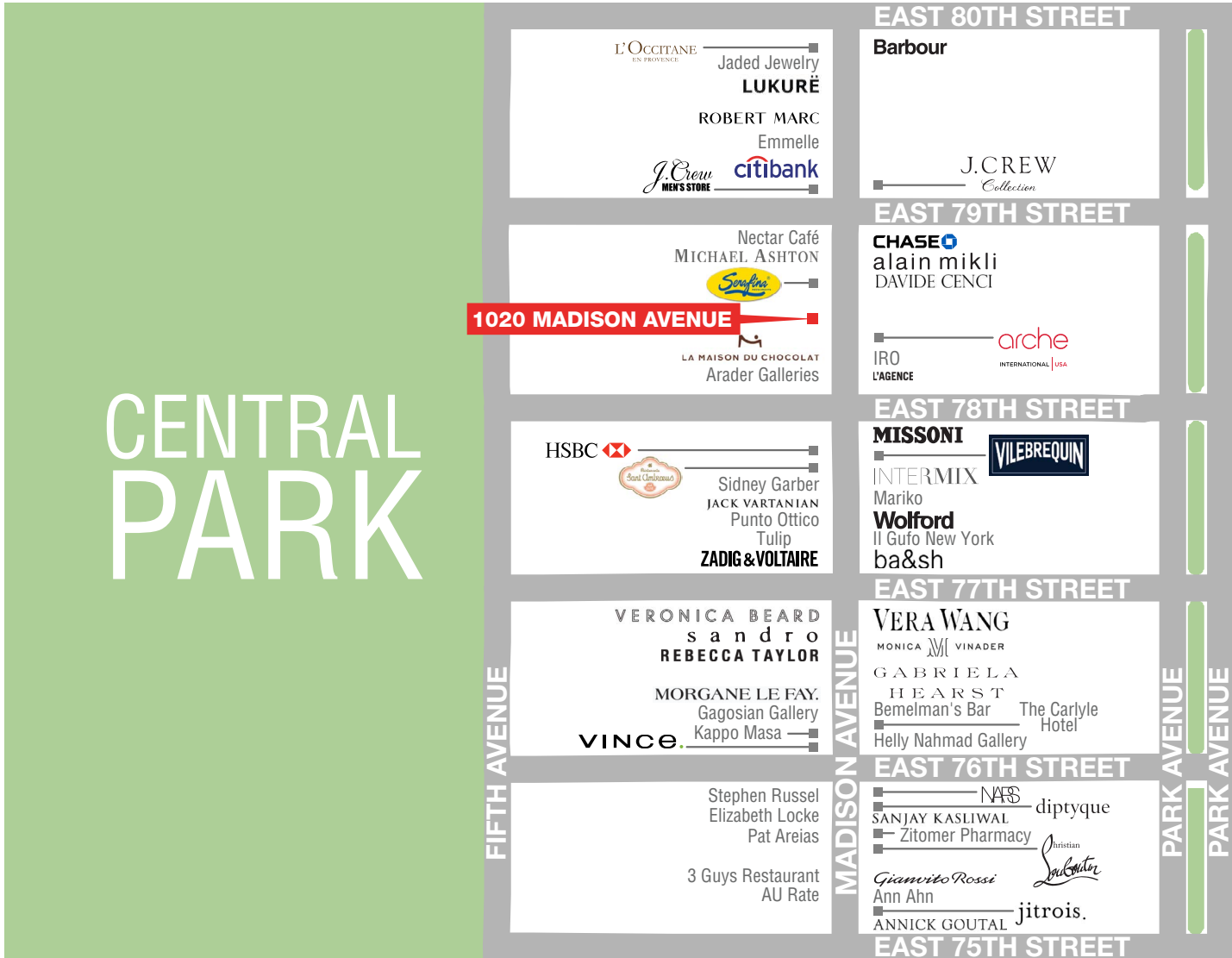
BASEMENT



AREA NEIGHBORS



AREA RETAIL



⊕ COMING SOON

CONTACT EXCLUSIVE AGENTS

HARRISON ABRAMOWITZ
212.372.2467
habramowitz@ngkf.com

JASON PRUGER
212.372.2092
jpruger@ngkf.com



NGKF.COM

© 2019 NEWMARK KNIGHT FRANK RETAIL. The information contained herein has been obtained from sources deemed reliable but has not been verified and no guarantee, warranty or representation, either express or implied, is made with respect to such information. Terms of sale or lease and availability are subject to change or withdrawal without notice.