

200 Sparkman Drive

Cummings Research Park

Small Office Space
Available in CRP East



±2,000 sf Available at a
Competitive Lease Rate

Convenient to University of
Alabama Huntsville (UAH)

Cummings Research Park East
Zoning-Less restrictive than West

Offered by

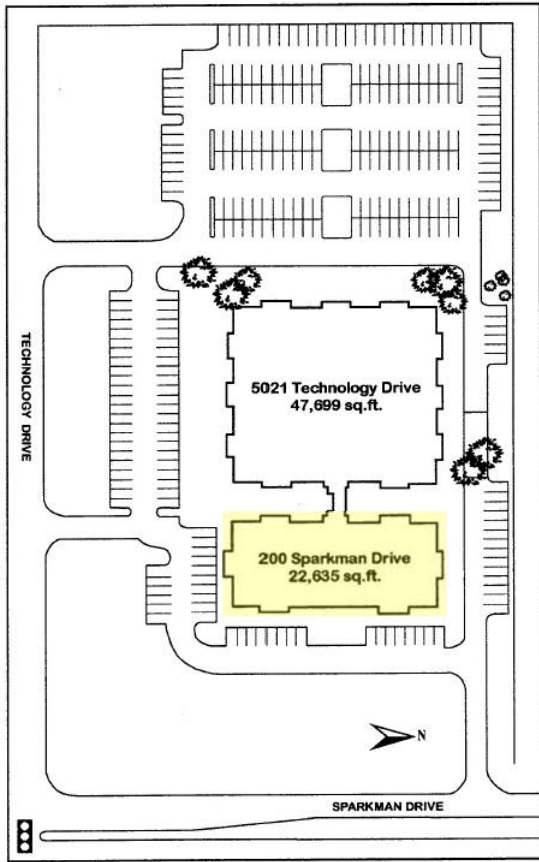
Samples Properties

Contact Michael Samples at:

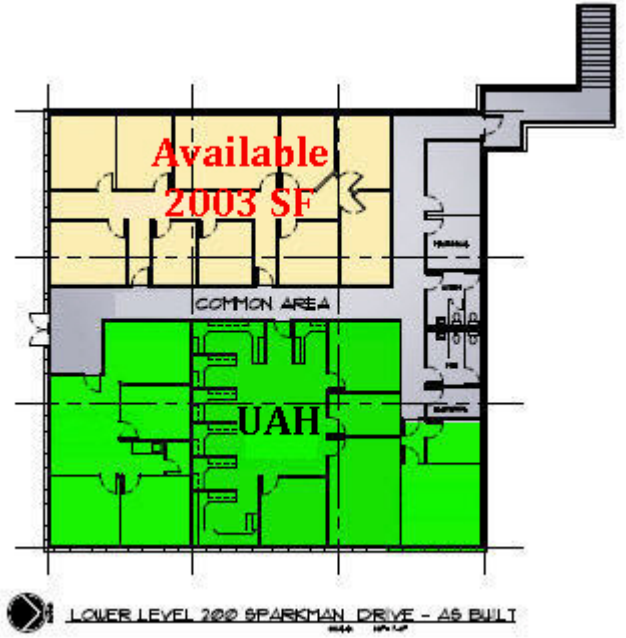
525 Madison Street
Suite 205
Huntsville, AL 35801
256.533.0003

michael@samplesproperties.com
samplesproperties.com

Site Plan



200 Sparkman Drive Cummings Research Park East



FIRST FLOOR 5021 TECHNOLOGY DRIVE - REFER TO A1,D



FIRST FLOOR 200 SPARKMAN DRIVE - AS BUILT