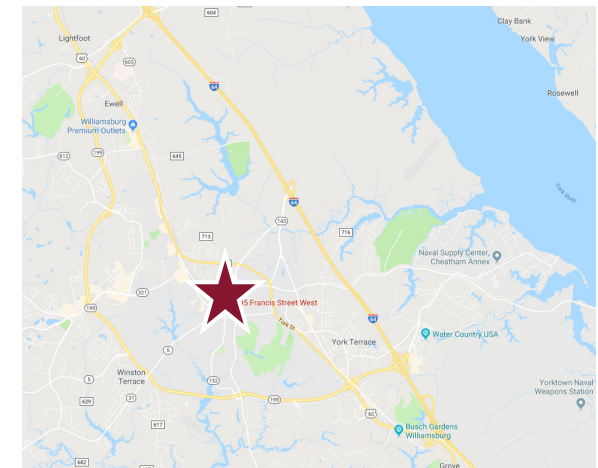




Property Features

- Building Size: 3,539 SF
- Available Space:
 - 1st Floor: 1,251 SF (can be subdivided)
 - 2nd Floor: 1,088 SF
- Pricing: \$7,400/month (entire building)
- Utilities included
- A 1760 circa 2-story office building situated 1 block off of Duke of Gloucester Street
- Located across from The Dewitt Gallery Museums of Colonial Williamsburg
- Building offers 2 floors plus a 1,200 SF basement for storage



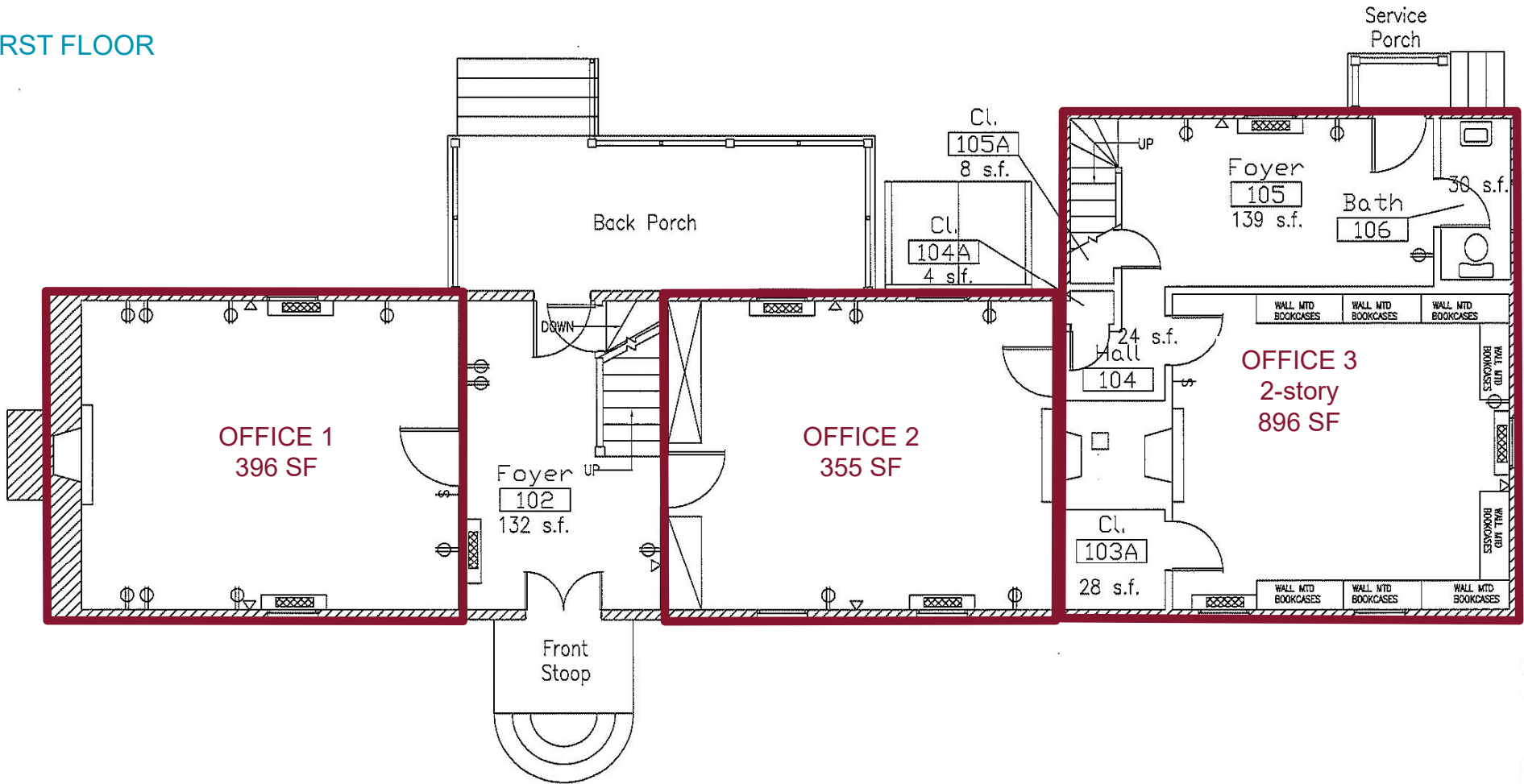
For more information, contact:

DAWN GRIGGS, SIOR
First Vice President
757 873 1210
dawn.griggs@thalhimer.com

DREW HAYNIE
First Vice President
757 873 9004
drew.haynie@thalhimer.com

One BayPort Way, Suite 100
Newport News, VA 23606
www.thalhimer.com

FIRST FLOOR



TVH – FIRST FLOOR PLAN

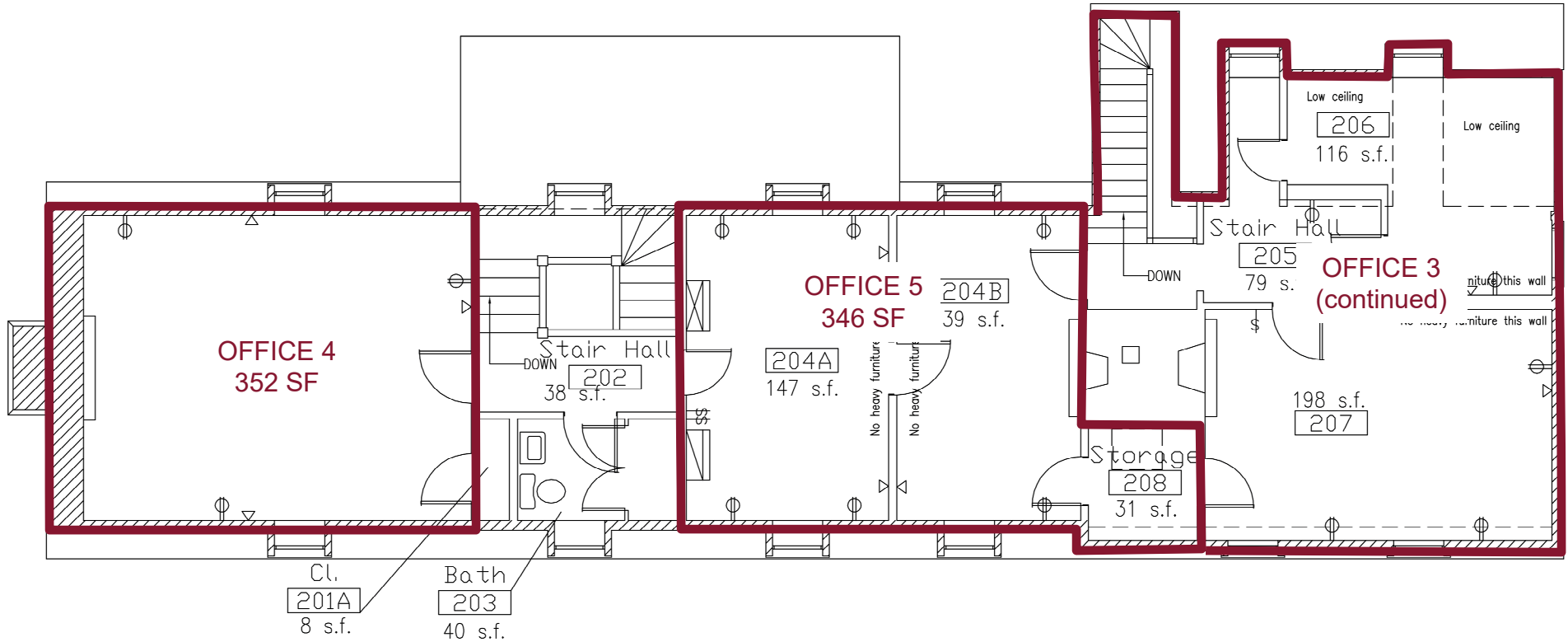
For more information, contact:

DAWN GRIGGS, SIOR
First Vice President
757 873 1210
dawn.griggs@thalhimer.com

DREW HAYNIE
First Vice President
757 873 9004
drew.haynie@thalhimer.com

One BayPort Way, Suite 100
Newport News, VA 23606
www.thalhimer.com

SECOND FLOOR



TVH – SECOND FLOOR PLAN

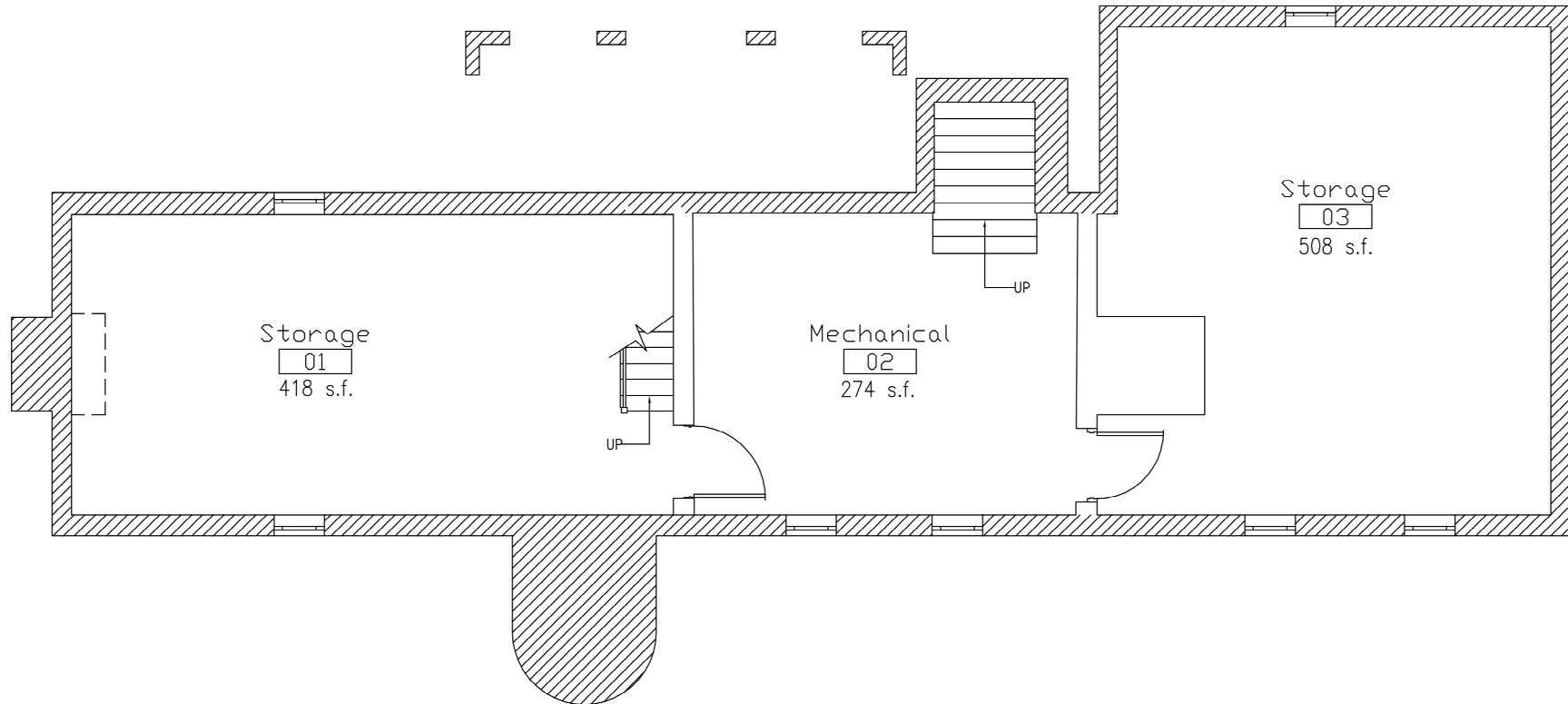
For more information, contact:

DAWN GRIGGS, SIOR
First Vice President
757 873 1210
dawn.griggs@thalhimer.com

DREW HAYNIE
First Vice President
757 873 9004
drew.haynie@thalhimer.com

One BayPort Way, Suite 100
Newport News, VA 23606
www.thalhimer.com

BASEMENT



TVH – BASEMENT FLOOR PLAN

For more information, contact:

DAWN GRIGGS, SIOR
First Vice President
757 873 1210
dawn.griggs@thalhimer.com

DREW HAYNIE
First Vice President
757 873 9004
drew.haynie@thalhimer.com

One BayPort Way, Suite 100
Newport News, VA 23606
www.thalhimer.com